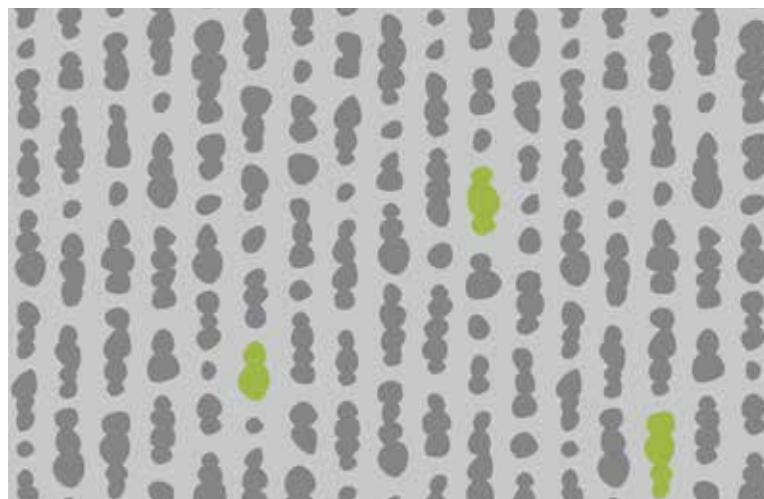


# TECHNICAL IMAGE GUIDE

## Standard Aspek™ Patterns

### Inkling



A001 - Light Grey

We carefully selected several on-trend patterns to add a decorative element to your space. Each pattern is available in 5 unique color options, to best coordinate with your interiors. All patterns are reverse printed with non-PVC ink to our .040" (1mm) clear PETG sheet. A polyester backing is then applied to add additional protection for the print. For more information visit [www.inprocorp.com](http://www.inprocorp.com)



A002 - Cashmere



A003 - Blue Grey



A004 - Persimmon



A005 - Soft Green

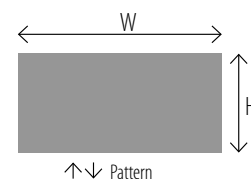
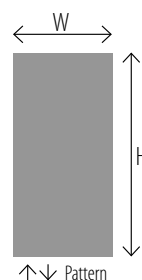
### Tiled Pattern

Inkling pattern repeats every 12" horizontally and vertically.

### Panel Size & Pattern Direction

Full Panel:  
48" Wide by  
120" High  
(1.22m x 3.05m)

Wainscot Panel:  
120" Wide by  
48" High  
(3.05m x 1.22m)



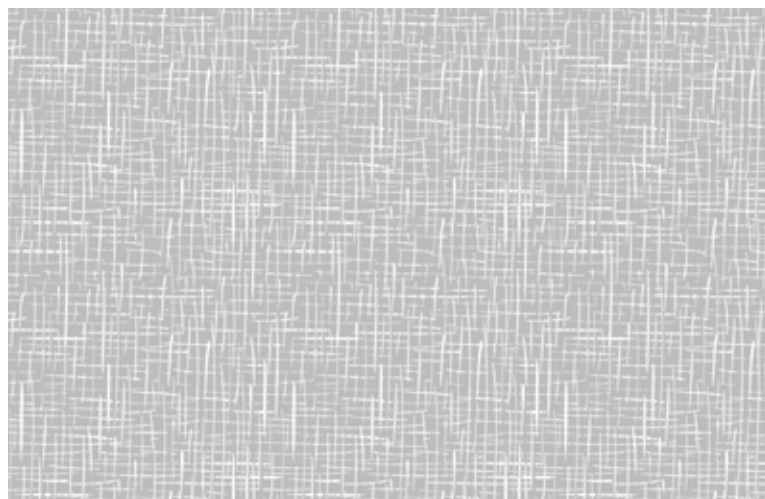
*Due to the printing process, colors may vary. For more accurate color selections, please request a sample.*

IPC.3046/REV.2

# TECHNICAL IMAGE GUIDE

## Standard Aspex™ Patterns

### Entwine



A016 - Light Grey

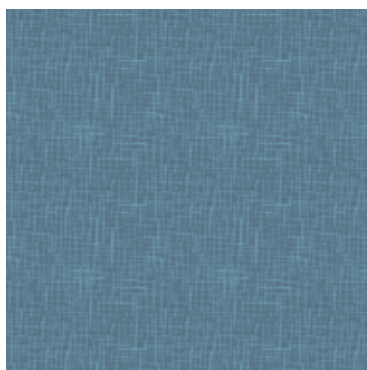
We carefully selected several on-trend patterns to add a decorative element to your space. Each pattern is available in 5 unique color options, to best coordinate with your interiors. All patterns are reverse printed with non-PVC ink to our .040" (1mm) clear PETG sheet. A polyester backing is then applied to add additional protection for the print. For more information visit [www.inprocorp.com](http://www.inprocorp.com)



A017 - Cashmere



A018 - Blue Grey



A019 - Aquamarine



A020 - Dark Grey

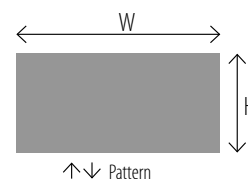
### Tiled Pattern

Entwine pattern repeats every 6" horizontally and vertically.

### Panel Size & Pattern Direction

Full Panel:  
48" Wide by  
120" High  
(1.22m x 3.05m)

Wainscot Panel:  
120" Wide by  
48" High  
(3.05m x 1.22m)



*Due to the printing process, colors may vary. For more accurate color selections, please request a sample.*

IPC.3046/REV.2

# TECHNICAL IMAGE GUIDE

## Standard Aspex™ Patterns

### Prairie



A021 - Blue Grey

We carefully selected several on-trend patterns to add a decorative element to your space. Each pattern is available in 5 unique color options, to best coordinate with your interiors. All patterns are reverse printed with non-PVC ink to our .040" (1mm) clear PETG sheet. A polyester backing is then applied to add additional protection for the print. For more information visit [www.inprocorp.com](http://www.inprocorp.com)



A022 - Cashmere



A023 - Blue Grey



A024 - Persimmon



A025 - Dark Grey

### Tiled Pattern

Prairie pattern repeats every 6" horizontally and vertically.

### Panel Size & Pattern Direction

Full Panel:

48" Wide by

120" High

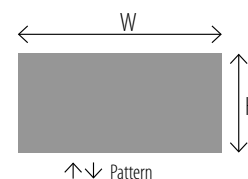
(1.22m x 3.05m)

Wainscot Panel:

120" Wide by

48" High

(3.05m x 1.22m)



*Due to the printing process, colors may vary. For more accurate color selections, please request a sample.*

IPC.3046/REV.2



# TECHNICAL IMAGE GUIDE

## Standard Aspex™ Patterns

### Bloom



A026 - Light Grey

We carefully selected several on-trend patterns to add a decorative element to your space. Each pattern is available in 5 unique color options, to best coordinate with your interiors. All patterns are reverse printed with non-PVC ink to our .040" (1mm) clear PETG sheet. A polyester backing is then applied to add additional protection for the print. For more information visit [www.inprocorp.com](http://www.inprocorp.com)



A027 - Cashmere



A028 - Blue Grey



A029 - Persimmon



A030 - Soft Green

### Tiled Pattern

Bloom pattern repeats every 12" horizontally and vertically.

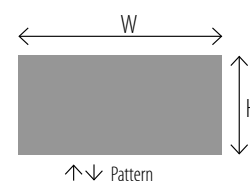
### Panel Size & Pattern Direction

Full Panel:

48" Wide by  
120" High  
(1.22m x 3.05m)

Wainscot Panel:

120" Wide by  
48" High  
(3.05m x 1.22m)



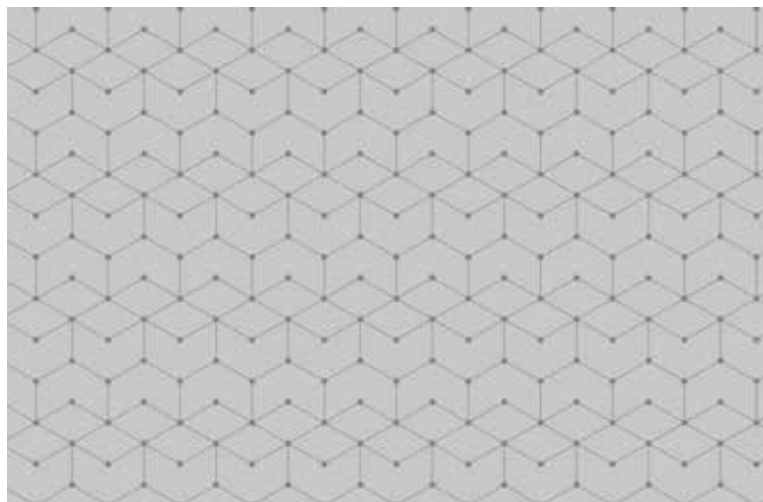
*Due to the printing process, colors may vary. For more accurate color selections, please request a sample.*

IPC.3046/REV.2

# TECHNICAL IMAGE GUIDE

## Standard Aspex™ Patterns

### Interstellar



A006 - Light Grey

We carefully selected several on-trend patterns to add a decorative element to your space. Each pattern is available in 5 unique color options, to best coordinate with your interiors. All patterns are reverse printed with non-PVC ink to our .040" (1mm) clear PETG sheet. A polyester backing is then applied to add additional protection for the print. For more information visit [www.inprocorp.com](http://www.inprocorp.com)



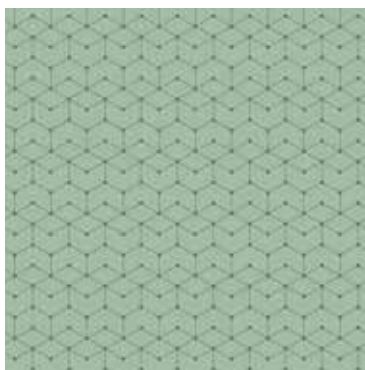
A007 - Cashmere



A008 - Aquamarine



A009 - Persimmon



A010 - Soft Green

### Tiled Pattern

Interstellar pattern repeats every 7" horizontally and 6" vertically.

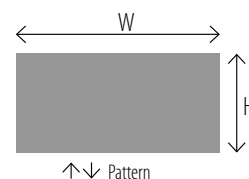
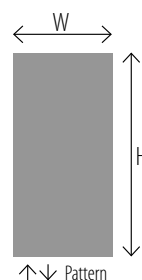
### Panel Size & Pattern Direction

Full Panel:

48" Wide by  
120" High  
(1.22m x 3.05m)

Wainscot Panel:

120" Wide by  
48" High  
(3.05m x 1.22m)



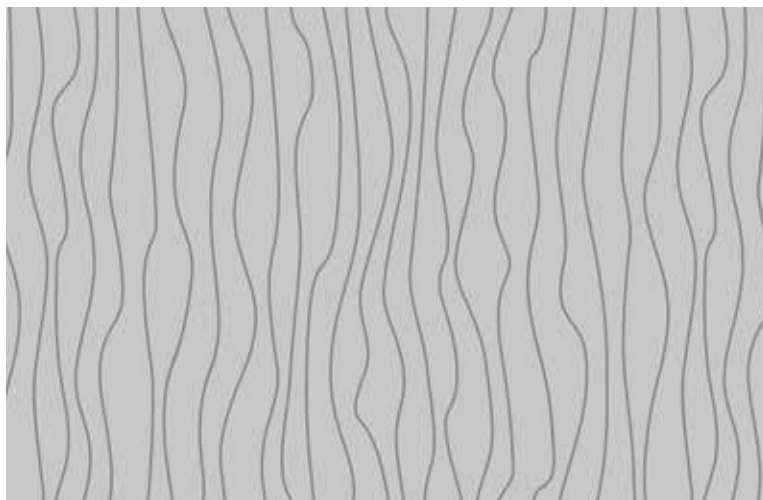
*Due to the printing process, colors may vary. For more accurate color selections, please request a sample.*

IPC.3046/REV.2

# TECHNICAL IMAGE GUIDE

## Standard Aspex™ Patterns

### Drift



A011 - Light Grey

We carefully selected several on-trend patterns to add a decorative element to your space. Each pattern is available in 5 unique color options, to best coordinate with your interiors. All patterns are reverse printed with non-PVC ink to our .040" (1mm) clear PETG sheet. A polyester backing is then applied to add additional protection for the print. For more information visit [www.inprocorp.com](http://www.inprocorp.com)



A012 - Cashmere



A013 - Blue Grey



A014 - Persimmon



A015 - Soft Green

### Tiled Pattern

Drift pattern repeats every 9" horizontally and 8" vertically.

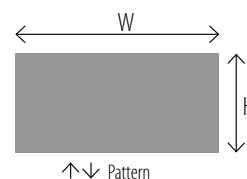
### Panel Size & Pattern Direction

Full Panel:

48" Wide by  
120" High  
(1.22m x 3.05m)

Wainscot Panel:

120" Wide by  
48" High  
(3.05m x 1.22m)



*Due to the printing process, colors may vary. For more accurate color selections, please request a sample.*

IPC.3046/REV.2