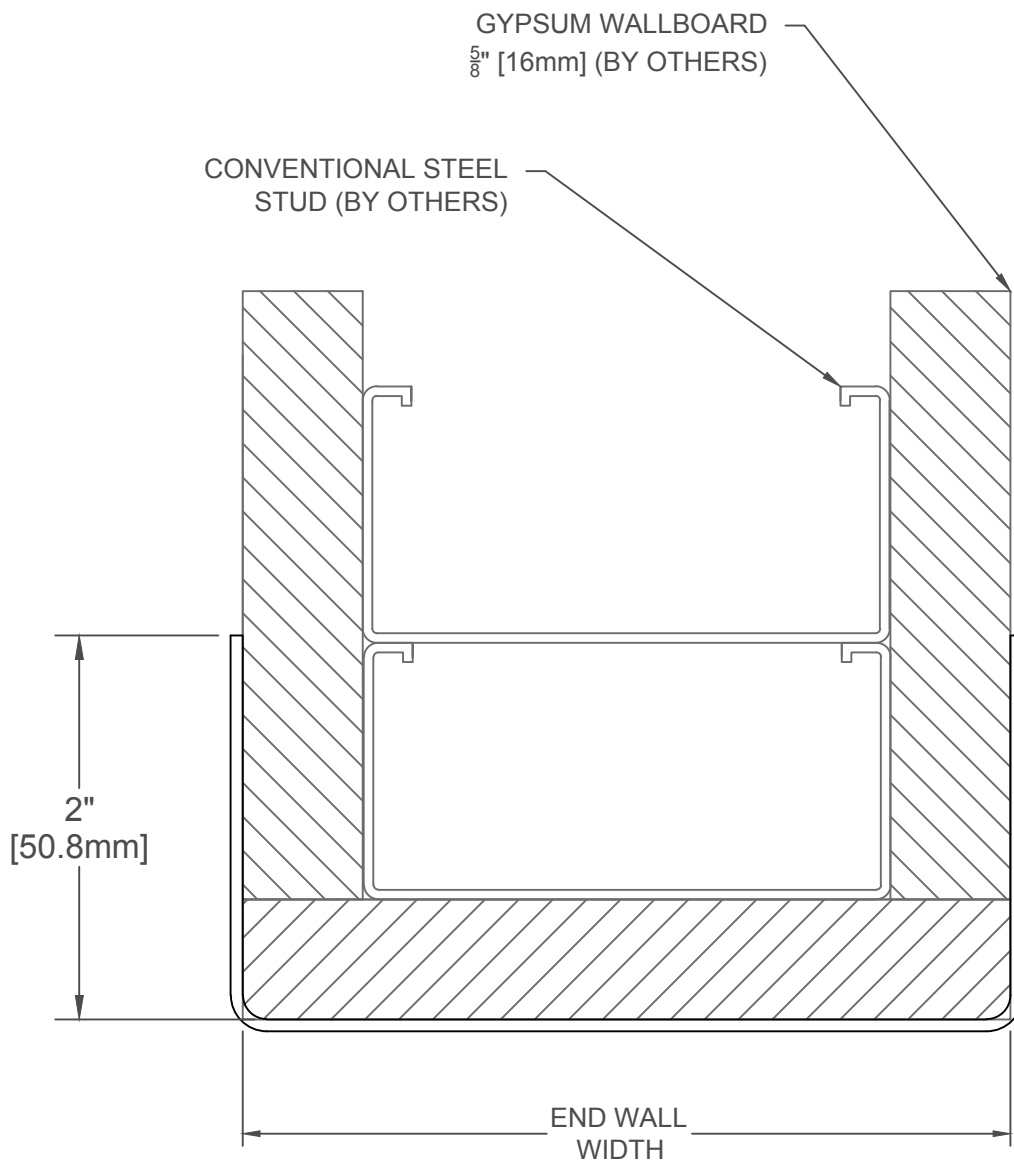


STANDARD:  
TYPE 430, 16 GAUGE

AVAILABLE:  
TYPE 430, 14 AND 18 GAUGE  
TYPE 304, 14 AND 16 GAUGE

CEMENT OR SCREW ON



FINISH:

• **IPC**  
DOOR + WALL  
PROTECTION SYSTEMS

DATE: 2/15/10

SCALE: 1:1

DOC #:  
CADIPC.195/rev1

STAINLESS STEEL END  
WALL PROTECTOR

PROJECT:

CUSTOMER:

LOCATION:

**inpro.**

For more information visit:  
[www.inprocorp.com](http://www.inprocorp.com)