

Installation Instructions

Stainless Steel End Wall Protectors

Please read all instructions before installing corner guards.

Important

1. Acclimate materials 24 hrs before installation. Maintain temperature controlled environment after installation
2. Install in accordance with manufacturer's installation instructions. Failure to do so will void the warranty.

Section View

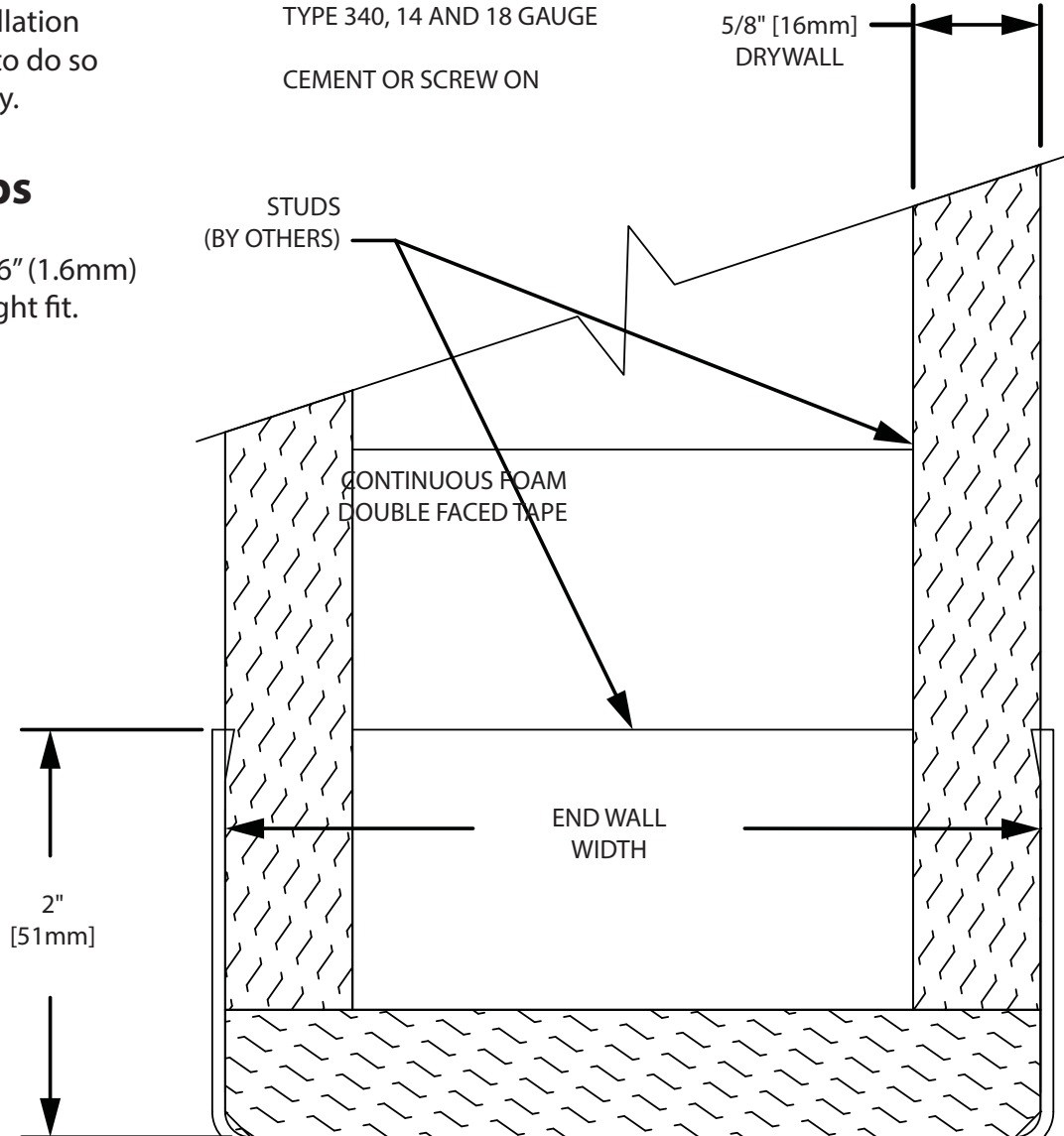
STANDARD:
TYPE 430, 16 GAUGE

AVAILABLE:
TYPE 430, 14 AND 18 GAUGE
TYPE 340, 14 AND 18 GAUGE

CEMENT OR SCREW ON

Installation tips

1. Cut covers up to 1/16" (1.6mm) longer to ensure a tight fit.



Recommended tools

Safety Glasses, Tape Measure, Level, Power Drill, 1/4" Socket, Drill Bits - 1/4" masonry (concrete/concrete block), Power Miter Saw, 10" Blade with 60-80 Carbide Tipped Teeth

IPC.1708/REV.2

Installation Hotline • 866.EZINPRO
Inprocorp.com • 800.222.5556 • 262.679.9010

World Headquarters S80 W18766 Apollo Drive, Muskego, WI 53150 USA

IPC®
DOOR + WALL PROTECTION SYSTEMS
A DIVISION OF INPRO®

Installation Instructions

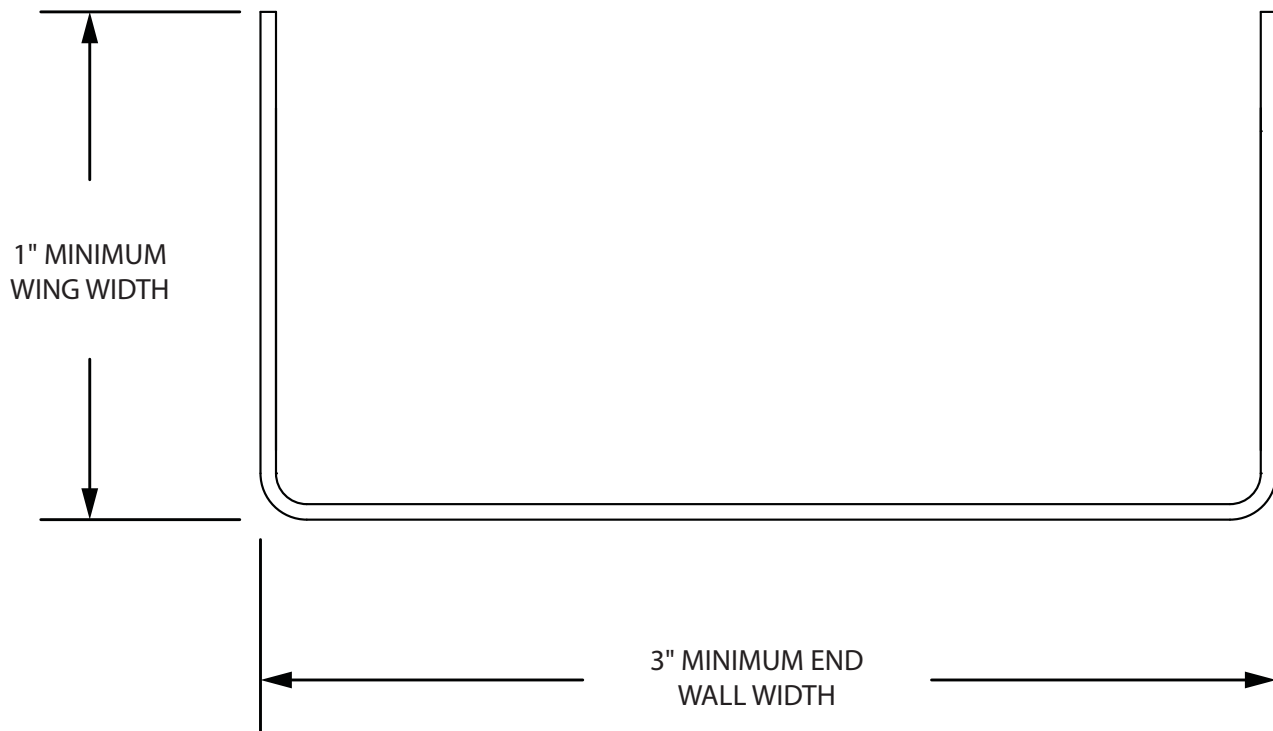
Stainless Steel End Wall Protectors

Please read all instructions before installing corner guards.

Component

STAINLESS STEEL END WALL PROTECTORS

CUSTOM – 1" MINIMUM WING WIDTH,
3" MINIMUM ENDWALL WIDTH,
CORNER RADIUS - 1/8"
HEIGHT – 48" (1219MM) OR CUSTOM



Installation Hotline • 866.EZINPRO

Inprocorp.com • 800.222.5556 • 262.679.9010

World Headquarters S80 W18766 Apollo Drive, Muskego, WI 53150 USA

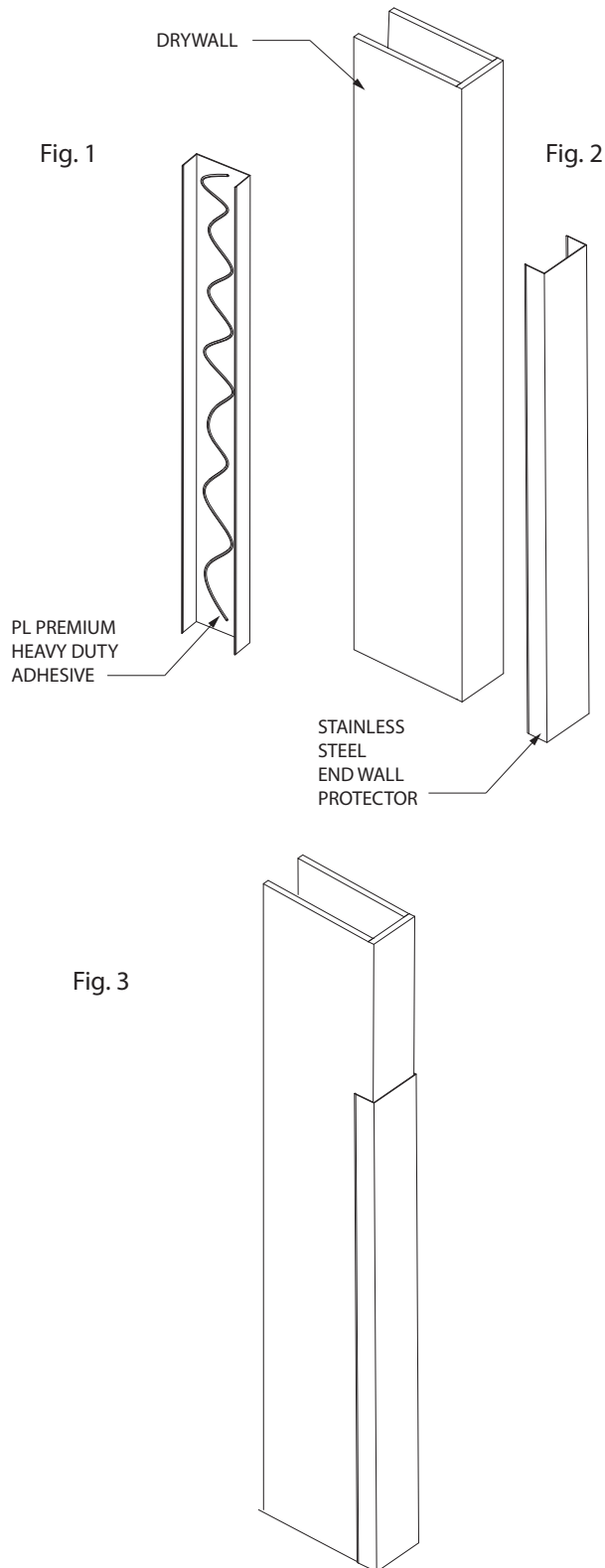
IPC® •

DOOR + WALL PROTECTION SYSTEMS
A DIVISION OF INPRO®

Installation Instructions

Stainless Steel End Wall Protectors

Please read all instructions before installing corner guards.



1. The wall surface that the end wall protectors are to be applied must be dry and free of dirt, dust, oil, loose paint, wax and grease.

INSTALLATION

2. Apply a bead of PL Premium Heavy Duty Adhesive in a zig-zag pattern over the back of the end wall protector. See Figure 1.
3. Position end wall protector on the wall and apply pressure until a tight fit is achieved. See figure 2.
4. Remove the protective plastic coating from the exposed surface of the end wall protector.