

Installation Instructions

HR920 International Compliant Handrail

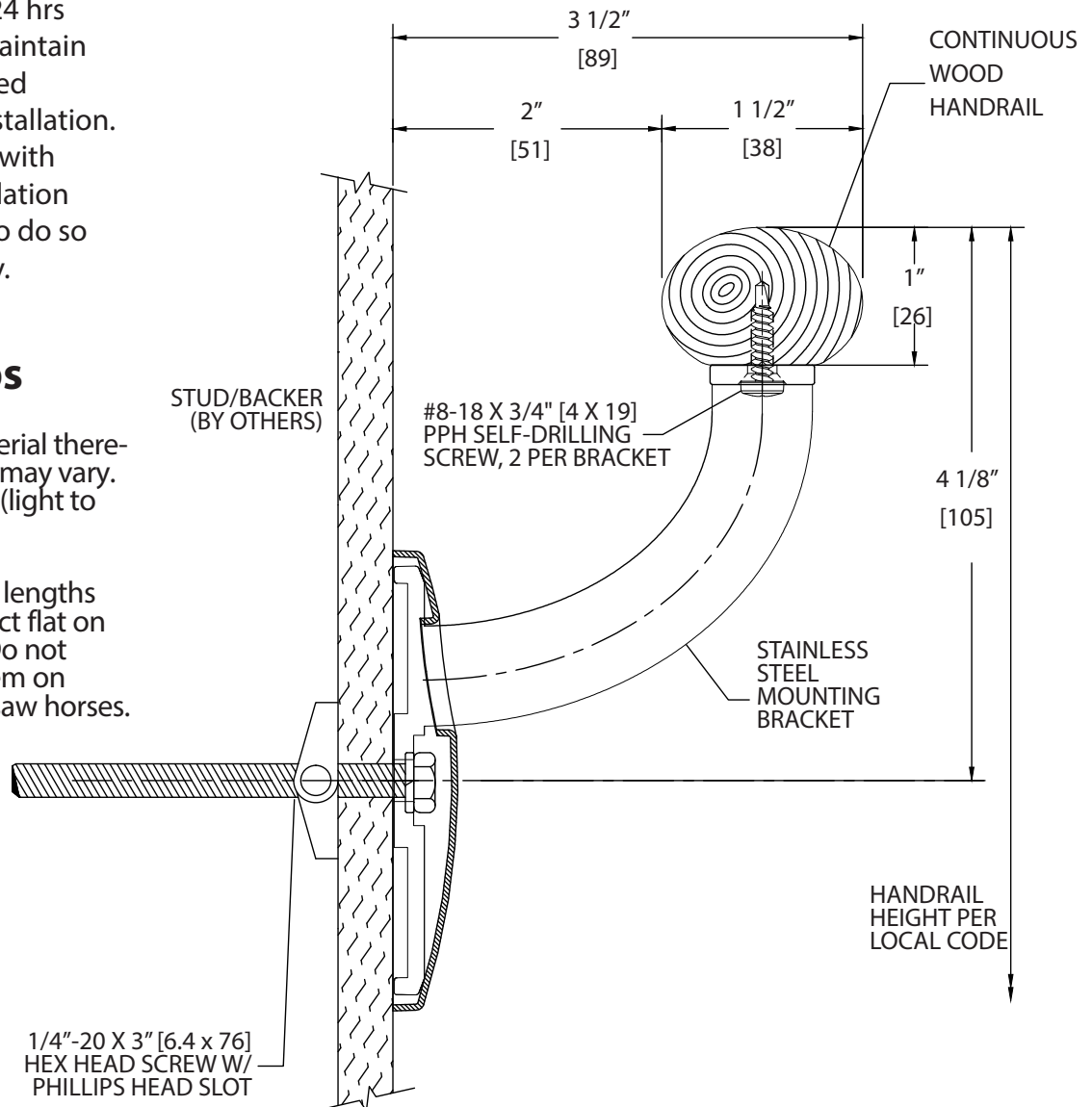
Please read all
instructions before
installing handrail.

Important

1. Acclimate materials 24 hrs before installation. Maintain temperature controlled environment after installation.
2. Install in accordance with manufacturer's installation instructions. Failure to do so will void the warranty.

Installation tips

1. Wood is a natural material therefore component color may vary. Sort the parts by color (light to dark) before use.
2. When storing straight lengths of materials, lay product flat on a supported surface. Do not lean the rails or lay them on unsupported parallel saw horses.



SECTION VIEW

Recommended tools

Safety Glasses, Tape Measure, 3/8" socket for machine screw hex bolt, 7/16" socket for wood screw hex bolt, Level, Phillips and Flat head Screwdrivers, Power Drill, Drill Bits - 1/4" masonry (concrete/concrete block), Power Miter Saw, 10" Blade with 60-80 Carbide Tipped Teeth.

IPC.2227/REV.2

Installation Hotline • 866.EZINPRO

Inprocorp.com • 800.222.5556 • 262.679.9010

World Headquarters S80 W18766 Apollo Drive, Muskego, WI 53150 USA

IPC®

DOOR + WALL PROTECTION SYSTEMS
A DIVISION OF INPRO®

Installation Instructions

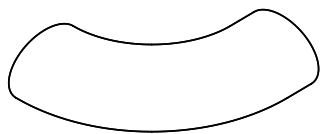
HR920 International Compliant Handrail

Please read all instructions before installing handrail.

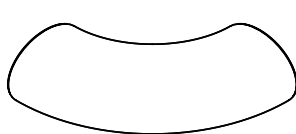
Component Overview



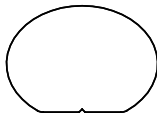
HR922INT
LEFT RETURN



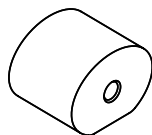
HR923INT
RIGHT RETURN



HR922
INSIDE/OUTSIDE
CORNER



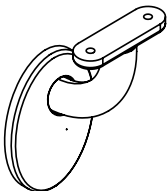
HR920
WOOD TOP
PROFILE



HR920WDG
DOWEL
GUIDE



#8-18 X 3/4"
PPH SELF DRILLING
SCREW



910SS-INT
MOUNTING BRACKET
STAINLESS ST.

Wall Condition	Specified Fasteneres	Inpro Part#
Concrete/Concrete Block	1/4"-20 x 3" Phillips hex head toggle bolt with lock washer, 1/4"-20 x 1/2" Diameter Lead Anchor	HWK-910SS-INTC
Drywall/Stud	1/4"-20 x 3" Phillips Hex Head Toggle Bolt, 1/4" Lockwasher, 1/4"-20 Toggle Wing Nut	HWK-910SS-INTD
Wood	1/4" x 3" Hex Head Wood Screw, 1/4" Lockwasher	HWK-910SS-INTW

Installation Hotline • 866.EZINPRO

Inprocorp.com • 800.222.5556 • 262.679.9010

World Headquarters S80 W18766 Apollo Drive, Muskego, WI 53150 USA

IPC®

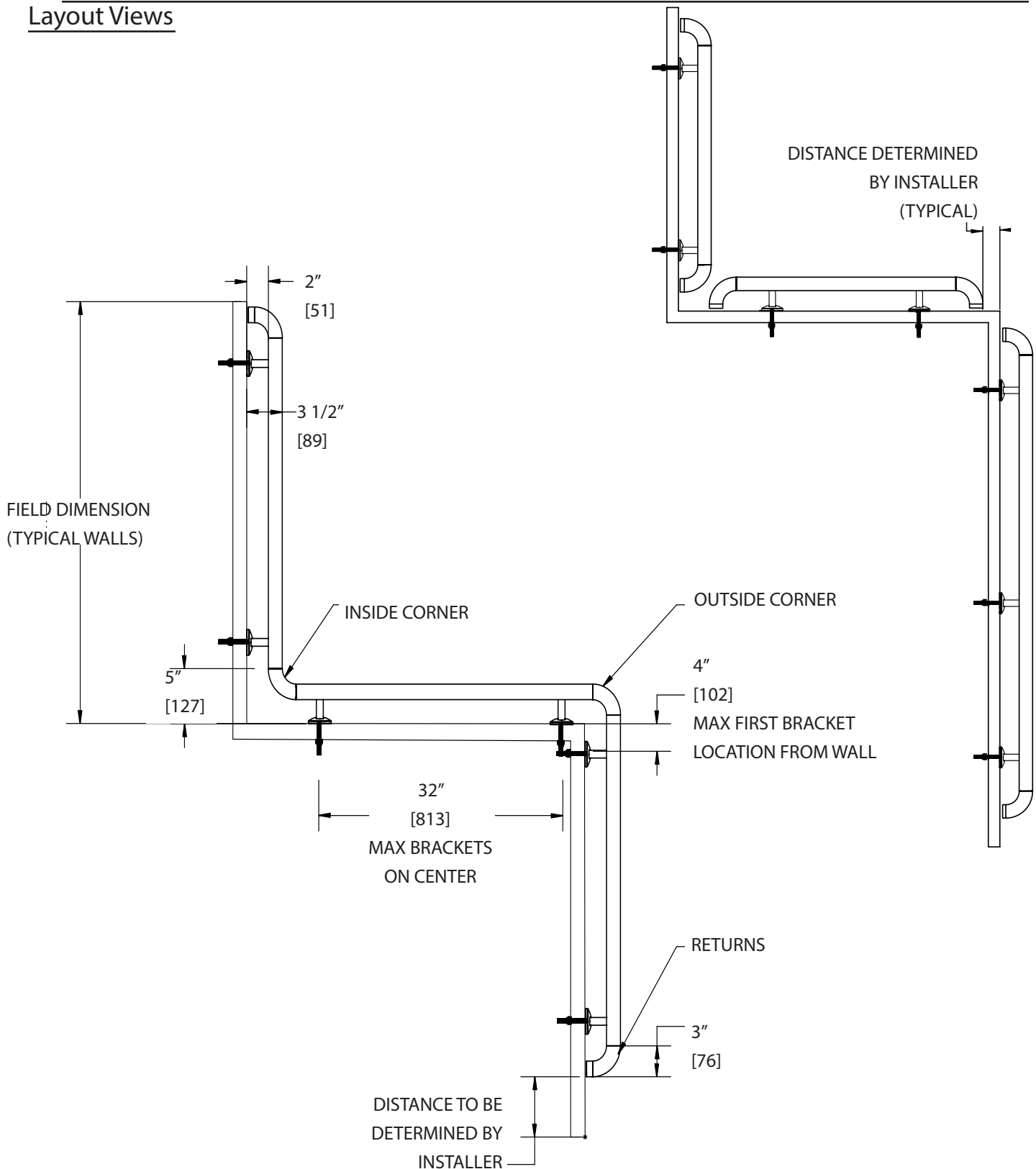
DOOR + WALL PROTECTION SYSTEMS
A DIVISION OF INPRO®

Installation Instructions

HR920 International Compliant Handrail

Please read all
instructions before
installing handrail.

Layout Views



Installation Hotline • 866.EZINPRO

Inprocorp.com • 800.222.5556 • 262.679.9010

World Headquarters S80 W18766 Apollo Drive, Muskego, WI 53150 USA

IPC®

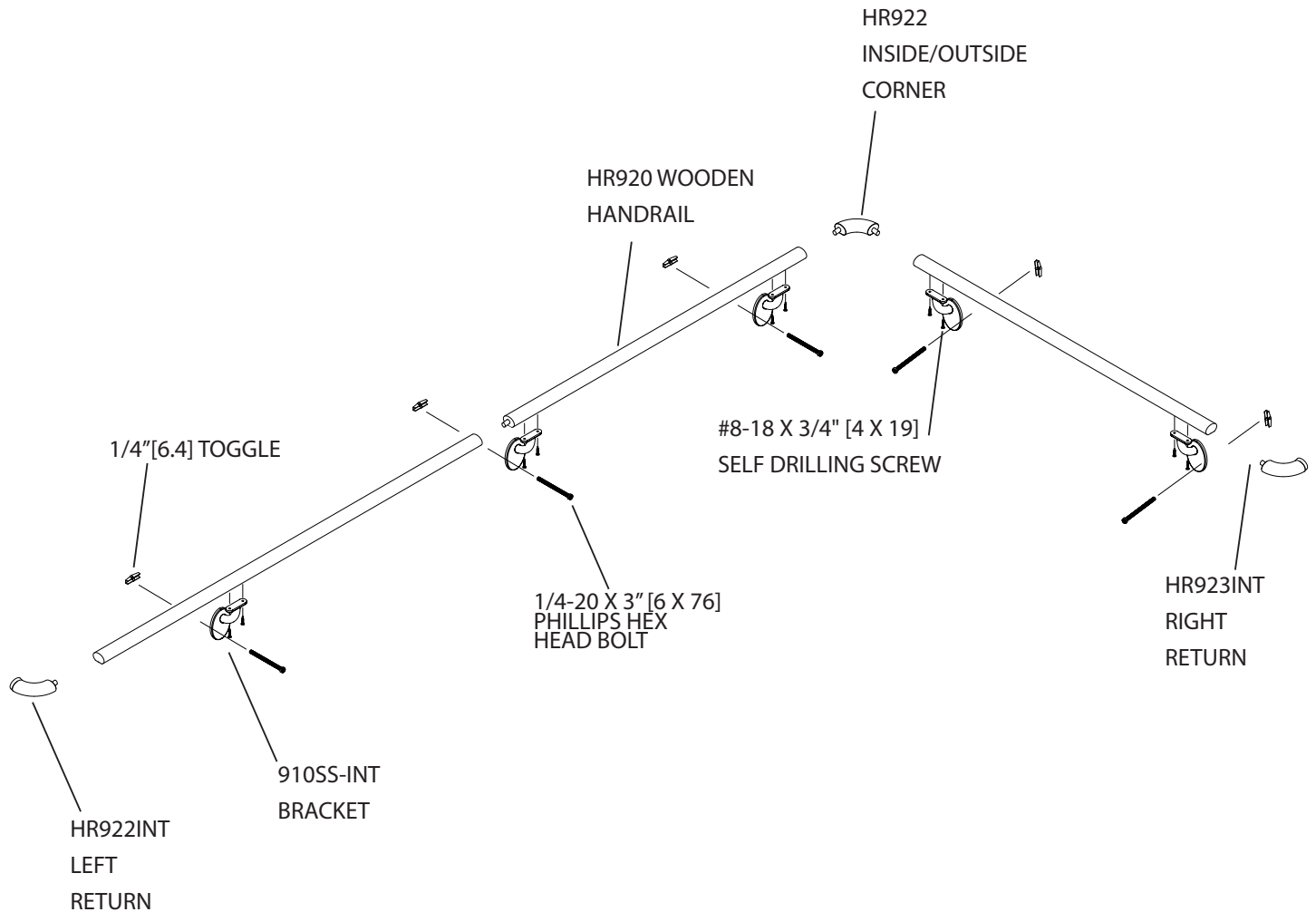
DOOR + WALL PROTECTION SYSTEMS
A DIVISION OF INPRO®

Installation Instructions

HR920 International Compliant Handrail

Please read all
instructions before
installing handrail.

Exploded View Assembly



Installation Hotline • 866.EZINPRO

Inprocorp.com • 800.222.5556 • 262.679.9010

World Headquarters S80 W18766 Apollo Drive, Muskego, WI 53150 USA

IPC®

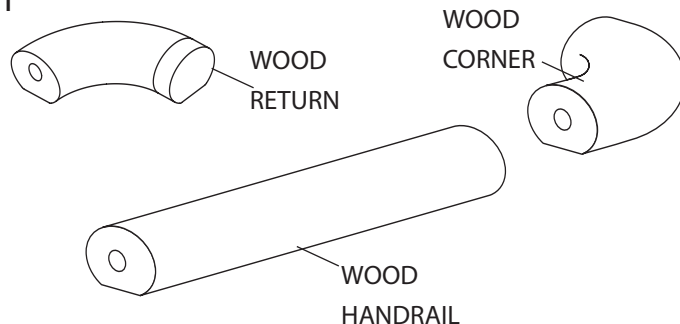
DOOR + WALL PROTECTION SYSTEMS
A DIVISION OF INPRO®

Installation Instructions

HR920 International Compliant Handrail

Please read all
instructions before
installing handrail.

FIG. 1



NOTE: CORNERS AND RETURNS USE
(3"[76] ALLOWANCE FOR RETURN)
(5"[127] ALLOWANCE FOR INSIDE CORNER
(ADD 1/2"[13] ALLOWANCE FOR OUTSIDE CORNER)

1. Cut wood handrail to desired length, leaving allowances for returns, outside corners and inside corners.

See Figure 1.

2. Mark bracket locations on underside of wood top, starting brackets should be 4" [102] from ends and spaced a max of 32" [813] on center. See Figure 2. Use bracket as a guide to drill 2 pilot holes around centerline.

3. For Wood Returns and Corners: Drill holes for wood dowels using a 13/32" [10mm] drill bit and a dowel guide for hole placement in each section of rail. If dowel guide fit to wood is loose, wrap painter's tape around handrail to create a snug fit. Glue and clamp the handrail and return/corner assembly until the glue is set. Align the surfaces of the rail and returns/corners. Minor Adjustment Tip: If needed, filing a slight taper at the end of the dowel on one side will provide more play between the mating pieces. See Figure 3.

Note: Joining wood rail to wood rail, follow instructions in step 3.

FIG. 2

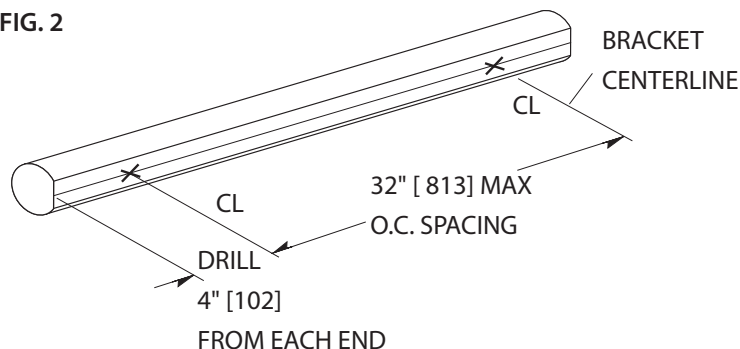
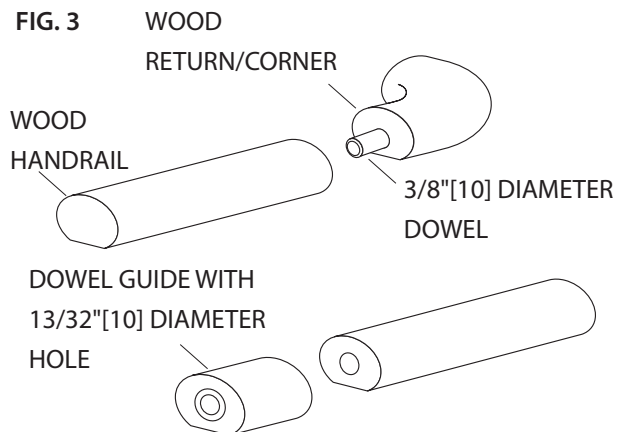


FIG. 3



Installation Hotline • 866.EZINPRO

Inprocorp.com • 800.222.5556 • 262.679.9010

World Headquarters S80 W18766 Apollo Drive, Muskego, WI 53150 USA

IPC®

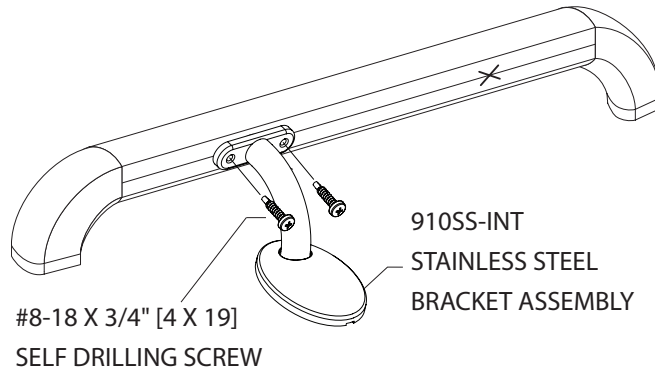
DOOR + WALL PROTECTION SYSTEMS
A DIVISION OF INPRO®

Installation Instructions

HR920 International Compliant Handrail

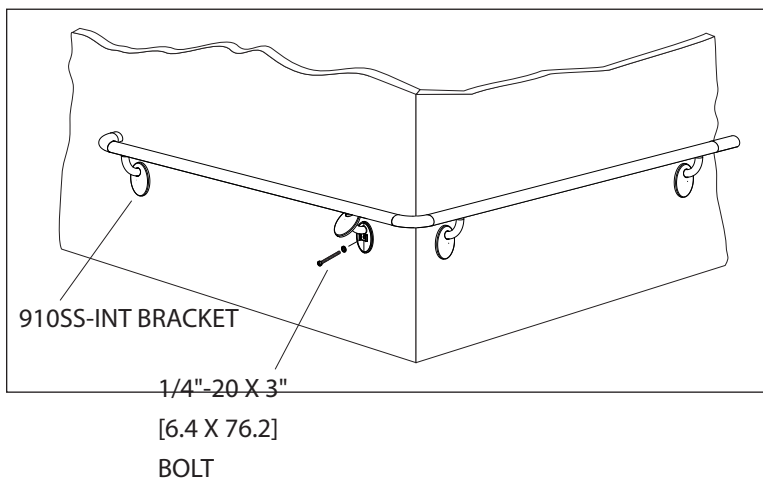
Please read all
instructions before
installing handrail.

FIG. 4



4. Slip stainless steel cover over the bracket post. Screw brackets into handrail aligning the center of bracket to marked locations. See Figure 4.
5. Position handrail/bracket assembly against wall at the desired height. Level and mark bracket holes on the wall. Drill marked holes with 3/4" [19mm] drill bit for toggle bolts (drywall installation) or 1/2" [13mm] drill bit for lead anchor (concrete wall installation). Loosely attach mounting bolts to the brackets. Mount handrail assembly on wall, level and tighten screws to secure. Snap stainless steel covers over the mounting base. See Figure 5.

FIG. 5



Installation Hotline • 866.EZINPRO

Inprocorp.com • 800.222.5556 • 262.679.9010

World Headquarters S80 W18766 Apollo Drive, Muskego, WI 53150 USA

IPC®
DOOR + WALL PROTECTION SYSTEMS
A DIVISION OF INPRO®