

787 Series

A01 - Floor to Floor

A02 - Floor to Wall



Movement Rating \pm 50%

Product Guide



Seismic



Exterior



Interior



Fire Rated Option



Vapor Barrier Option



Heavy Duty

- ▶ Seismic capable system designed to meet the needs of Open Structures and Vehicular loading.
- ▶ Industry unique profile drastically reduces the lateral impact (shear forces) encountered with repeated vehicular traffic. This maximizes product lifespan & ensures against the premature fatigue encountered in other configurations on the market.
- ▶ Tapered plate and frames provide a seamless, ADA compliant design that constantly levels itself and maintains a flush condition.
- ▶ Heavy duty design uses a thick high strength centering bar and spring assembly, to resist vibrations.
- ▶ 1" [25mm] frame depth ensures no interference in rebar / cabling structure.
- ▶ Serrated cover plate for added slip resistance.
- ▶ Integral high durometer seal deters water from entering the system and acts as a noise dampening device.
- ▶ Reinforced Vapor Barrier is included.

Application	System	W		H		S		B		Movement +/-			
		Joint Width		Frame Height		Sightline		Blockout		Horizontal		Vertical	
		US	mm	US	mm	US	mm	US	mm	US	mm	US	mm
Floor to Floor	787-A01-100	4"	100	1"	25	13 1/2"	342	6"	152	2"	51	1"	25
	787-A01-150	6"	150	1"	25	16 1/2"	419	6 1/2"	165	3"	76	1 1/2"	38
	787-A01-200	8"	200	1"	25	18 1/2"	470	6 1/2"	165	4"	102	2"	51
	787-A01-250	10"	250	1"	25	24 1/2"	622	8 1/2"	216	5"	127	2 1/2"	64
	787-A01-300	12"	300	1"	25	26 1/2"	673	8 1/2"	216	6"	152	3"	76
Floor to Wall	787-A02-100	4"	100	1"	25	8 3/4"	222	6"	152	1"	25	1"	25
	787-A02-150	6"	150	1"	25	11 1/4"	286	6 1/2"	165	1 1/2"	76	1 1/2"	38
	787-A02-200	8"	200	1"	25	13 1/4"	337	6 1/2"	165	2"	102	2"	51
	787-A02-250	10"	250	1"	25	17 1/4"	438	8 1/2"	216	2 1/2"	127	2 1/2"	64
	787-A02-300	12"	300	1"	25	19 1/4"	489	8 1/2"	216	3"	152	3"	76

*Contact your InPro Representative for project specific loading capabilities.

IPC.1564/REV.5

Inprocorp.com • 800.222.5556 • 262.679.9010
World Headquarters S80 W18766 Apollo Drive, Muskego, WI 53150 USA

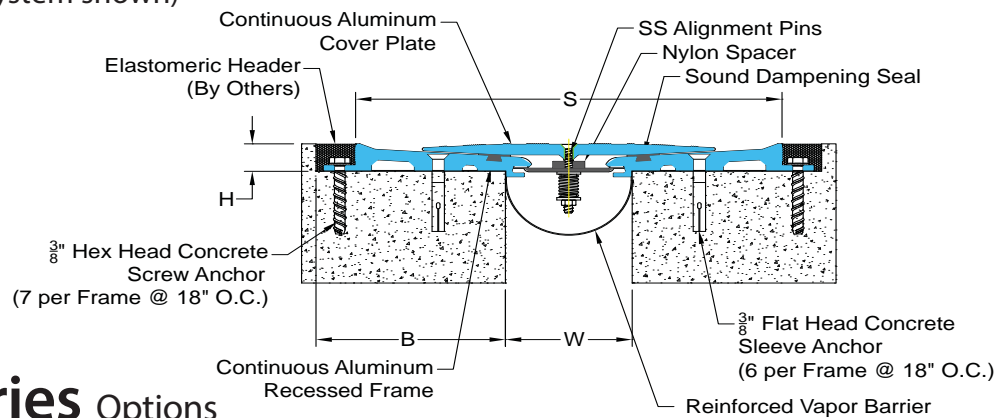
JOINTMASTER®
EXPANSION JOINT SYSTEMS
A DIVISION OF INPRO®

787 Series

Heavy Duty Seismic Floor Systems

787-A01 Floor/Floor

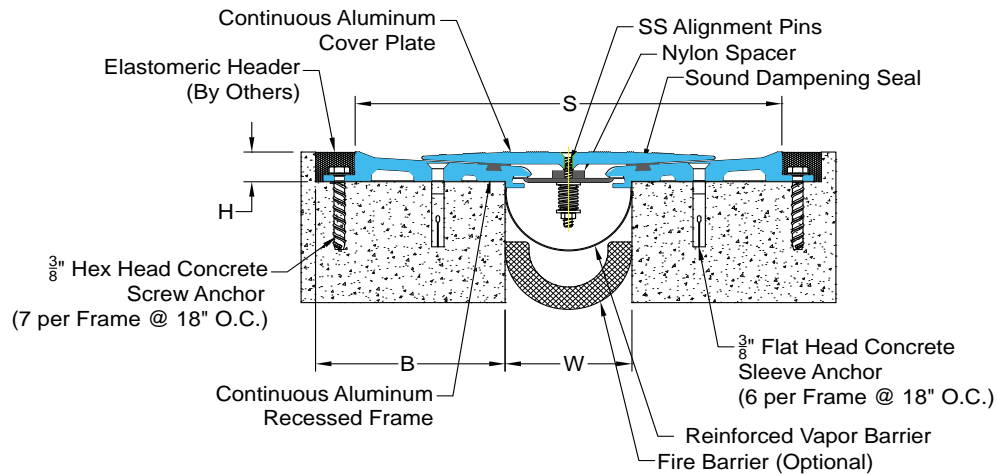
(4" (100mm) system shown)



787 Series Options

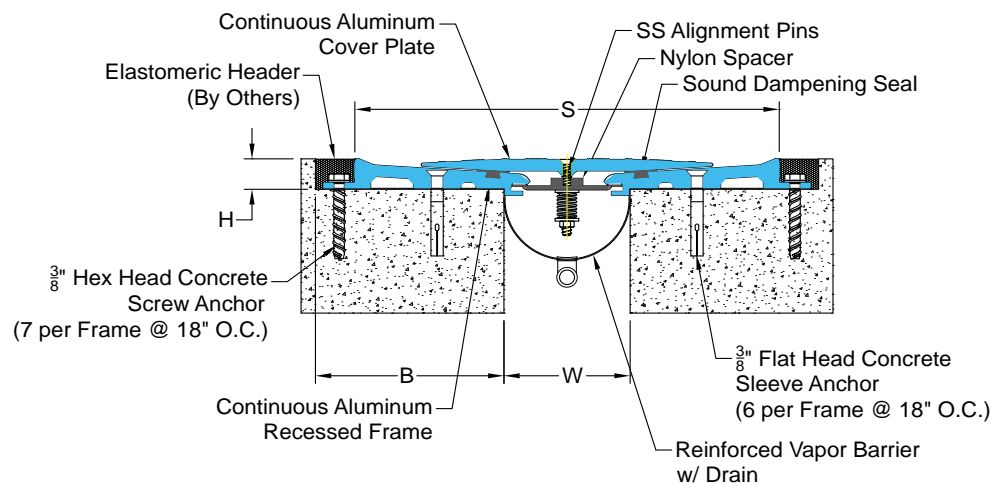
787-A01 Floor/Floor With Fire Barrier

(4" (100mm) system shown)



787-A01 Floor/Floor With Vapor Barrier

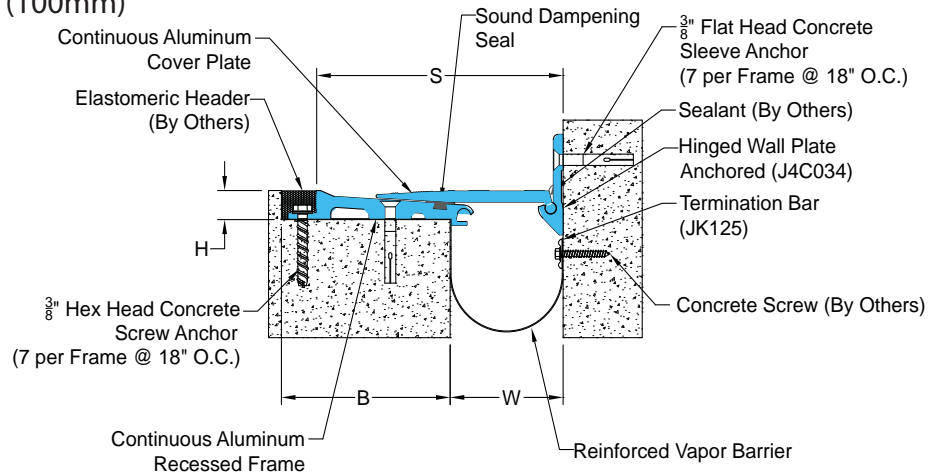
(4" (100mm) system shown)



787 Series

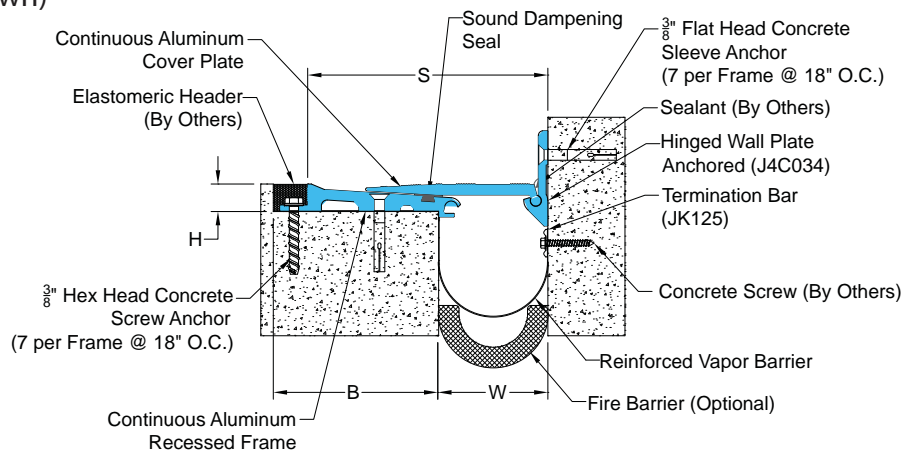
Heavy Duty Seismic Floor Systems

787-A02 Floor/Wall (4" (100mm) system shown)

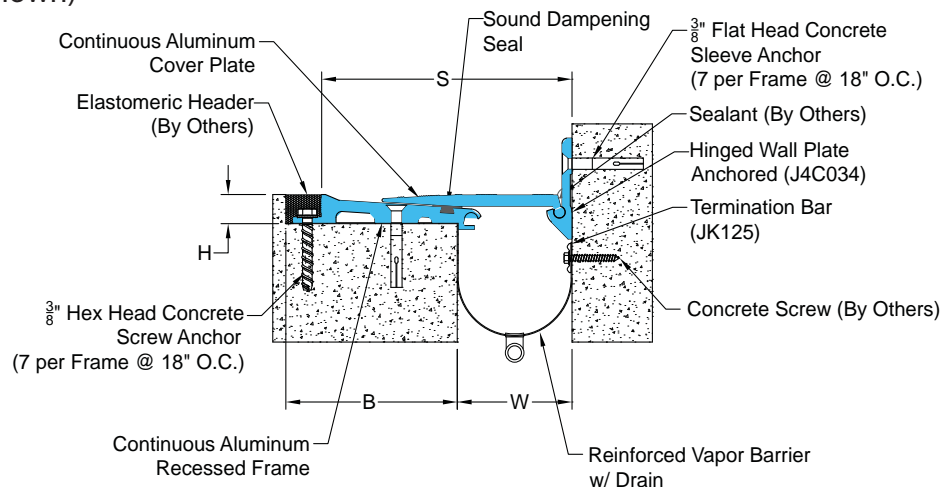


787 Series Options

787-A02 Floor/Wall With Fire Barrier (4" (100mm) system shown)



787-A02 Floor/Wall With Vapor Barrier (4" (100mm) system shown)



700 Series

Suggested Specifications

PART 1 - GENERAL

1.01 SUMMARY

- A. Furnish Expansion Joint Systems in accordance with the drawings and general provisions of the Contract.

1.02 WORK INCLUDED

- A. Furnish complete JointMaster/InPro Corporation Expansion Joint Systems.
1. Interior floor expansion joint systems.
 2. Exterior floor expansion joint systems.
 3. Parking deck expansion joint systems.
 4. Fire Rated Assemblies.

1.03 RELATED WORK

- A. Related work which is specified elsewhere.

1. Cast-In-Place Concrete: Section 03300.
2. Unit Masonry: Section 04810.
3. Structural Steel: Section 05120.
4. Light gage Metal Framing: Section 05400.
5. Roof Expansion Assemblies: 07716.
6. Sheet Metal Flashing and Trim: Section 7620.
7. Cement Plaster: Section 09210.
8. Gypsum Wallboard: Section 09266.

1.04 REFERENCES

- A. Publications listed herein are part of this specification. See below for standards where applicable to the product listed:
1. American Society for Testing and Materials (ASTM):
 - a. ASTM B 221, Standard Specifications for Aluminum and Aluminum-Alloy Extruded Bars, Rods, Wire, Shapes, and Tubes.
 - b. ASTM B 209 "Standard Specifications for Aluminum and Aluminum Alloy Sheet and Plate."
 - c. ASTM E1399 "Cyclic Movement and Measuring of Minimum/Maximum Joint Widths of Architectural Joint Systems."

1.05 DEFINITIONS

- A. Define industry and product terms as necessary.
1. Bevel: Leading edge treatment.
 2. Taper: Gradual sloped profile less than that of a bevel.

1.06 SYSTEM DESCRIPTION

- A. Joint systems shall permit limited movement of joint without disengagement.

1. Specify x-axis joint movement (horizontal).
 2. Specify y-axis joint movement (vertical).
 3. Specify z-axis joint movement (lateral).
- B. Allowable load on floor joint cover plate shall be in conformance with AASHTO (American Association of State Highway and Transportation Officials) or DIN (The Deutsches Institut für Normung) for vehicular rating requirements.
1. 500 lbs. for standard loads, 1000 lbs. for moderate loads, and 2000 lbs. for heavy loads.
- C. Fire Rated Assemblies shall meet requirements of Underwriters Laboratories, in accordance with [ANSI/U.L. No. 263 and ASTM E 119/E 814] [UL 2079] [including hose stream test at full rated period]. Underwriter's Laboratories shall classify assemblies. Fire rating shall be not less than the fire rating of adjacent construction.

1.07 QUALITY ASSURANCE

- A. Manufacturer: Furnish assemblies from one (1) manufacturer with a minimum of five (5) years of experience in the design, engineering and fabrication of expansion joint systems.
- B. Installer: Firm with not less than three (3) years of successful experience in the installation of systems similar to those required by this project and acceptable to the manufacturer of the system.

1.08 SUBMITTALS

- A. Manufacturer's specifications, technical data, installation instructions, and detail drawings for

each system.

- B. Certificates or other documentation confirming UL approved compliance with fire resistance rating of fire barrier assemblies.
- C. Sample of specified systems where required.

1.09 DELIVERY AND STORAGE

- A. Provide temporary protective covers on [anodized aluminum] [stainless steel] [bronze] finished surfaces.
- B. Deliver joint systems to jobsite in new, clean, unopened cartons or crates of sufficient size and strength to protect materials during transit.
- C. Store components in original containers in a clean, dry location. Inspect materials upon arrival, monitor for adverse environmental impacts.

1.10 SEQUENCING

- A. Submittals shall be completed and submitted within a reasonable amount of time after award of subcontract.
- B. Subcontract for the work of this section shall be planned to allow sufficient time for manufacturer's production and delivery scheduling.

1.11 WARRANTY

- A. Standard JointMaster/InPro Corporation limited warranty against material and manufacturing defects for a period of not less than five (5) years when installed in accordance with manufacturer's recommendations.

PART 2 - PRODUCTS

2.01 MANUFACTURER

- A. JointMaster/InPro Corporation
S80 W18766 Apollo Drive
Muskego, WI 53150 USA
Phone: (800) 222-5556 Fax: (888) 715-8407
Email: service@inprocorp.com
- B. Substitutions: Not permitted.

2.02 MATERIALS

- A. Aluminum: ASTM B 221, alloy 6063-T6, alloy 6061-T6, alloy 5052-H32.
- B. Stainless Steel Plates/Covers (optional): SS304
- C. Galvanized Steel Plates/Covers: Galvanized A36
- D. Vapor Barrier (optional): 45 mils thick fabric reinforced EPDM.
- E. Insulated Vapor Barrier (optional): Owens Corning EcoTouch Batt insulation sandwiched by an adhered and pinned 45 mil fabric reinforced EPDM.
- F. Fire Barrier (optional): [925 Mineral Wool and Sealant System to UL2079] [935 Textiled Wool and Silicone Sealant System to UL2079] [950 Blanket System to UL2079 with hose stream test to walls] [F520 Blanket System to UL2079 with hose stream test to walls] or [990/995 Foam System to UL2079 with hose stream test to walls] required for indicated fire resistance rating.
- G. Fasteners, accessories and other materials required for complete installation in accordance with the manufacturer's instructions.
- H. Centering Bars shall be fabricated from zinc coated steel.
- I. Sound Dampener (787 only): Santoprene Gasket.

2.03 Interior/Exterior Joint Systems for Floors

- A. JointMaster 700 Series - Heavy Duty System Profiles:
1. Floor Systems - Recessed/Flush Mount, Floor/Floor or Floor/Wall
 - a. 721-A01 or A02, frame and wing height 1 5/8" [41.3mm] with aluminum beveled plate.
 - b. 723-A01 or A02, frame and wing height 1 5/8" [41.3mm] with stainless steel beveled plate.
 - c. 725-A01 or A02, frame and stainless steel wing height 1 5/8" [41.3mm] with stainless steel beveled plate.
 - d. 741-A01 or A02, frame height 1" [25mm] flush mount with cover plate (stainless steel optional)

surface mount.

- e. 757-A01 or A02, dual tapered plate and sloped frame (height 2" [51mm]) vertical change-in-plane not to exceed 1/4" [5 mm] (or 8% slope) at any point.
 - f. 767-A01 or A02, dual tapered plate and frame (height 2" [51mm]) vertical change-in-plane not to exceed 1/4" [5 mm] (or 8% slope) at any point, with additional frame anchoring.
 - g. 787-A01 or A02, serrated plate with a dual tapered profile. Vertical change in plane not to exceed 1/4" [5 mm] (or 8% slope) at any point. Tapered frame with a depth not to exceed 1" [25mm]. System includes vehicular grade center bar and sound dampener/water barrier seal.
 - i. 797-A01, flush mount, .375" [9.5mm] or .5" [12.7mm] thick galvanized steel plate with 5° crown. With impact and sound dampening pad.
- B. JointMaster 700 Series - System Accessories:
- a. Fabric Reinforced Vapor Barrier for horizontal and vertical applications (as required).
 - b. Insulated Vapor Barrier for horizontal and vertical applications (as required).
 - c. Drainage Fittings for horizontal and vertical applications (as required).

2.04 FABRICATION

- A. Field assemble components provided in standard lengths with pre-packaged fasteners and accessories.
- B. Fabricate special transitions and corner fittings as required.

2.05 FINISHES

- A. Aluminum:
1. Floors: Standard Mill finish [Bead Blasted] [Brushed] optional.
- B. Stainless Steel: 2B

PART 3 - EXECUTION

3.01

- A. Verify that structural gap and blockout dimensions are in conformance with manufacturer's submittal data. See manufacturer for recommended tolerances.

3.02 INSTALLATION

- A. Joint systems: Install in accordance with manufacturer's instructions. Align work plumb, level and flush with adjacent surfaces. Rigidly anchor to substrate. Allowances should be made where actual structural gap at time of installation varies from nominal design gap. No shimming allowed.
- B. Set centering bars @ 18 inches on center. Centering bars shall engage in the frame.
- C. Fire Rated Assemblies: Where required, install to manufacturer's instructions.
- D. Vapor Barrier: Where required, install to manufacturer's instructions. Provide drainage fittings where required.

3.03 PROTECTION AND CLEANING

- A. Protect installation from damage by work of others.
- B. At completion of the installation, clean exposed surfaces with non-solvent cleaner.

END OF SECTION

Inprocorp.com • 800.222.5556 • 262.679.9010

World Headquarters S80 W18766 Apollo Drive, Muskego, WI 53150 USA

JOINTMASTER®
EXPANSION JOINT SYSTEMS
A DIVISION OF INPRO®