

101 Series Recess Mount

A07 - Wall to Wall or Ceiling to Ceiling

A09 - Wall to Corner or Wall to Ceiling



Movement Rating $\pm 25\%$

Product Guide



Thermal



Interior



Fire Rated
Option



Vapor Barrier
Option

- ▶ Dual durometer seal provide secure fit and optimal flexibility
- ▶ Seals absorb limited serviceable seismic movement
- ▶ Recessed mount frames for minimal sightline
- ▶ Interior and exterior applications
- ▶ Adaptable to any 5/8" (16mm) wall and ceiling finishes including drywall, plaster and tile
- ▶ Snap-on design for easy on site assembly
- ▶ Easy to clean flush seals
- ▶ Low profile wall mounted frame optional for wall to corner (A09) condition, minimizes sightlines at corners.
- ▶ Mill finish aluminum
- ▶ Standard seal colors: black, beige, gray, off white and bright white. Custom colors available upon request.

| Application | System | W | | H1 | | H2 | | S | | B | | Movement +/- | | | |
|------------------------------|-------------|-------------|----|----------------|----|----------|----|-----------|----|----------|----|--------------|----|----------|----|
| | | Joint Width | | Frame Height 1 | | Height 2 | | Sightline | | Blockout | | Horizontal | | Vertical | |
| | | US | mm | US | mm | US | mm | US | mm | US | mm | US | mm | US | mm |
| Wall/Wall Ceiling/Ceiling | 101-A07-025 | 1" | 25 | 3/4" | 19 | 5/8" | 16 | 1" | 25 | * | * | 1/4" | 6 | 1/4" | 6 |
| | 101-A07-038 | 1 1/2" | 38 | 3/4" | 19 | 5/8" | 16 | 1 7/16" | 36 | * | * | 3/8" | 10 | 3/8" | 10 |
| | 101-A07-050 | 2" | 51 | 3/4" | 19 | 5/8" | 16 | 1 7/8" | 47 | * | * | 1/2" | 13 | 1/2" | 13 |
| | 101-A07-075 | 3" | 76 | 3/4" | 19 | 5/8" | 16 | 2 7/8" | 73 | * | * | 3/4" | 19 | 3/4" | 19 |
| Wall/Corner Wall/Ceiling | 101-A09-025 | 1" | 25 | 3/4" | 19 | 5/8" | 16 | 1" | 25 | * | * | 1/4" | 6 | 1/4" | 6 |
| | 101-A09-038 | 1 1/2" | 38 | 3/4" | 19 | 5/8" | 16 | 1 7/16" | 36 | * | * | 3/8" | 10 | 3/8" | 10 |
| | 101-A09-050 | 2" | 51 | 3/4" | 19 | 5/8" | 16 | 1 7/8" | 47 | * | * | 1/2" | 13 | 1/2" | 13 |
| | 101-A09-075 | 3" | 76 | 3/4" | 19 | 5/8" | 16 | 2 7/8" | 73 | * | * | 3/4" | 19 | 3/4" | 19 |

May be available in larger widths, please contact InPro Corporation for more details.

IPC.819/REV.10

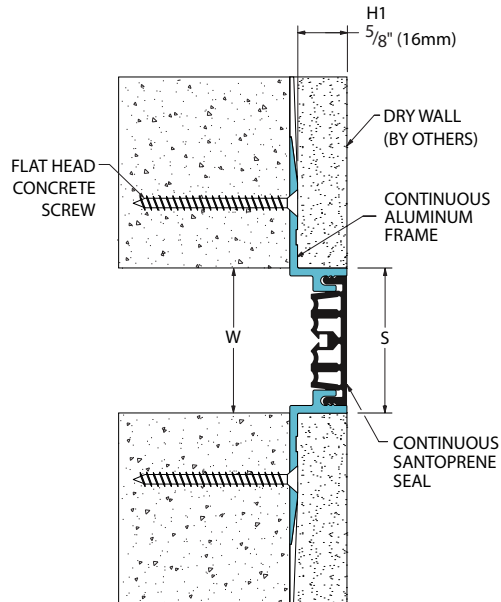
Inprocorp.com • 800.222.5556 • 262.679.9010
World Headquarters S80 W18766 Apollo Drive, Muskego, WI 53150 USA

JOINTMASTER®
EXPANSION JOINT SYSTEMS
A DIVISION OF INPRO®

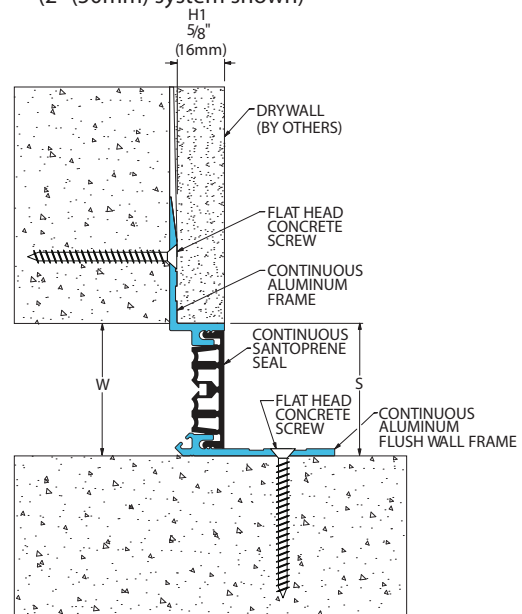
101 Series

Recessed Mount Wall and Ceiling Systems

101-A07 Wall/Wall Ceiling/Ceiling
(2" (50mm) system shown)

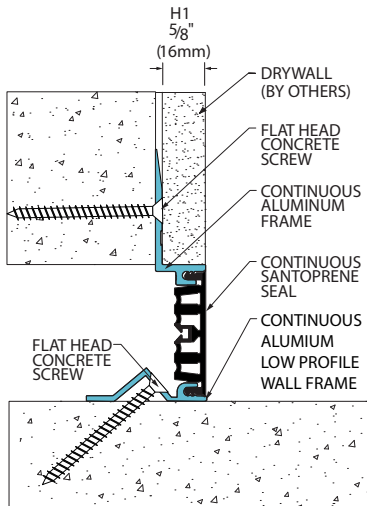


101-A09 Wall/Corner Wall/Ceiling
(2" (50mm) system shown)

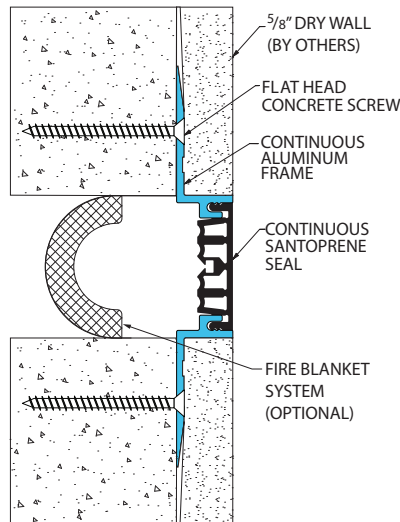


101 Series options

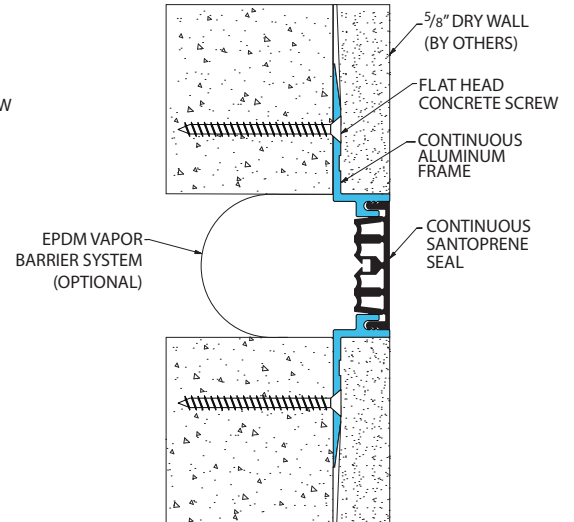
Low Profile System
(101-A09-050LP system shown)



Fire Blanket System
(101-A07-050 system shown)



EPDM Vapor Barrier System
(101-A07-050 system shown)



100 Series

Elastomeric Seal Systems for Floors, Walls and Ceilings

PART 1 – GENERAL

1.01 SUMMARY

- A. Furnish Expansion Joint Systems in accordance with the drawings and general provisions of the Contract.

1.02 WORK INCLUDED

- A. Furnish complete JointMaster/InPro Corporation Expansion Joint Systems.
1. Interior floor expansion joint systems.
 2. Interior wall expansion joint systems.
 3. Interior ceiling expansion joint systems.
 4. Exterior wall expansion joint systems.
 5. Exterior floor expansion joint systems.
 6. Fire Rated Assemblies.

1.03 RELATED WORK

- A. Related work which is specified elsewhere.

1. Cast-In-Place Concrete: Section 03300.
2. Unit Masonry: Section 04810.
3. Structural Steel: Section 05120.
4. Light Gage Metal Framing: Section 05400.
5. Roof Expansion Assemblies - 07716
6. Sheet Metal Flashing and Trim: Section 7620.
7. Cement Plaster: Section 09210.
8. Gypsum Wallboard: Section 09260.

1.04 REFERENCES

- A. Publications listed herein are part of this specification. See below for standards where applicable to the product listed:

1. American Society for Testing and Materials (ASTM):
 - a. ASTM B 221, "Standard Specifications for Aluminum and Aluminum-Alloy Extruded Bars, Rods, Wire, Shapes, and Tubes."
 - b. ASTM B 209, "Standard Specification for Aluminum and Aluminum Alloy Sheet and Plate."
- c. ASTM E1399 "Cyclic Movement and Measuring of Minimum/Maximum Joint Widths of Architectural Joint Systems."

1.5 DEFINITIONS

- A. Define industry and product terms as necessary.

1.06 SYSTEM DESCRIPTION

- A. Joint systems shall permit limited movement of joint without disengagement.
1. Specify x-axis joint movement (horizontal).
 2. Specify y-axis joint movement (vertical).
- B. Fire Rated Assemblies shall meet requirements of Underwriters Laboratories, in accordance with [ANSI/U.L. No. 263 and ASTM E 119/E 814] [UL 2079] [including hose stream test at full rated period]. Underwriter's Laboratories shall classify assemblies. Fire rating shall not be less than the fire rating of adjacent construction.

1.07 QUALITY ASSURANCE

- A. Manufacturer: Furnish assemblies from one (1) manufacturer with a minimum of five (5) years of experience in the design, engineering and fabrication of expansion joint systems.
- B. Installer: Firm with not less than three (3) years of successful experience in the installation of systems similar to those required by this project and acceptable to the manufacturer of the system.

1.08 SUBMITTALS

- A. Manufacturer's specifications, technical data, installation instructions, and detail drawings for each system.
- B. Certificates or other documentation confirming UL approved compliance with fire resistance rating of fire barrier assemblies.
- C. Sample of specified systems where required.

1.09 DELIVERY AND STORAGE

- A. Provide temporary protective covers on all finished surfaces.
- B. Deliver joint systems to jobsite in new, clean, unopened cartons or crates of sufficient size and strength to protect

materials during transit.

- C. Store components in original containers in a clean, dry location. Inspect materials upon arrival, monitor for adverse environmental impacts.

1.10 SEQUENCING

- A. Submittals shall be completed and submitted within a reasonable amount of time after award of subcontract.
- B. Subcontract for the work of this section shall be planned to allow sufficient time for manufacturer's production and delivery scheduling.

1.11 WARRANTY

- A. Standard JointMaster/InPro Corporation limited warranty against material and manufacturing defects for a period of not less than five (5) years when installed in accordance with manufacturer's recommendations.

PART 2 – PRODUCTS

2.01 MANUFACTURER

- A. JointMaster/InPro Corporation
S80 W18766 Apollo Drive
Muskego, WI 53150
USA Phone: (800) 222-5556
Fax: (888) 715-8407
Email: service@inprocorp.com
B. Substitutions: Not permitted.

2.02 MATERIALS

- A. Aluminum: ASTM B 221, alloy 6063-T6.
- B. Elastomeric Seal: Dual durometer santoprene with 60 Shore A and 40 Shore D or pleated santoprene seal with durometer of 70 shore A including a UV inhibitor. No neoprene substitutions allowed to reduce negative environmental impacts. Colors to be selected from manufacturer's standard range – Black, Gray, Beige, Off-White and Bright White. Custom colors available.
1. Seal must be GREENGUARD Gold Certified.
- C. Vapor Barrier (optional): 45 mils thick fabric reinforced EPDM or extruded integral PVC.
- D. Insulated Vapor Barrier (optional): Owens Corning EcoTouch Batt insulation sandwiched by an adhered and pinned 45 mil fabric reinforced EPDM meeting ASTM E 1399 requirements.
- E. Fire Barrier (optional): [925 Mineral Wool and Sealant Fire Barrier System to UL2079] [935 Textiled Wool and Sealant Fire Barrier System to UL2079] [950 Blanket Fire Barrier System to UL2079 with hose stream test to walls] [F520 Blanket System to UL2079 with hose stream test to walls] or [990/995 Foam System to UL2079 with hose stream test to walls] required for indicated fire resistance rating.
- F. Fasteners, accessories and other materials required for complete installation in accordance with the manufacturer's instructions.

2.03 INTERIOR JOINT SYSTEMS FOR FLOORS, WALLS AND CEILINGS

- A. JointMaster 100 Series – Dual Durometer Seal:
1. Dual durometer flat seal must maintain inherent dimensional stability and include structural spine inserts (where applicable) allowing for additional load resistance.
 2. Dual durometer seal profiles for floor and wall applications must be identical.
- B. JointMaster 100 Series – Pleated Seal:
1. Seal profile maintains inherent stability due to its unique engineered design.
 - a. Bellows depth not to exceed 5/8" [15.875 mm].
 2. Wall thickness not less than 1/8" [3.175 mm]
 3. Seal profile requires alignment pin holes.
 - C. JointMaster 100 Series - System Profiles: Aluminum support plate includes raised rib which secures structural spine in place (where required).
1. Floor Systems – Recessed/Flush Mount, Floor/Floor or Floor/Wall
 - a. 101-A01 or A02, frame height 1 1/2" standard, [1"] [2"] available, accepts all floor finishes.
 - b. 120-A01 or A02, frame height 1 1/2" standard, [1"] [2"] avail-

able, accepts all floor finishes.

2. Floor Systems – Surface Mount, Floor/Floor or Floor/Wall
 - a. 103-A01 or A02, accepts 1/8" VCT flooring.
 - b. 104-A01 or A02, accepts all floor finishes.
 - c. 105-A01 or A02, accepts 1/8" Sheet Vinyl flooring.
 - d. 106-A01 or A02, accepts 1/4" Carpet flooring.
 3. Floor Systems – New to Existing (Renovation), Floor/Floor or Floor/Wall
 - a. 107-A01, recessed frame 1 1/2" standard, accepts all flooring.
 - b. 108-A01, recessed frame 1 1/2" standard, accepts 1/8" sheet vinyl flooring.
 - c. 109-A01, recessed frame 1 1/2" standard, accepts 1/4" minimum depth carpet flooring.
 - d. 110-A01, recessed frame 1 1/2" standard, accepts 1/8" VCT flooring.
 - e. 132-A01 or A02, accepts 1/8" flooring.
 - f. 133-A01 or A02, accepts 3/8" flooring.
 - g. 141-A01, accepts 1/8" to 3/8" floor finishes.
 4. Wall/Ceiling Systems – Recessed/Flush Mount, Wall/Wall (and Ceiling/Ceiling) or Wall/Corner (and Ceiling/Wall)
 - a. 101-A07 or A09, accepts 5/8" finishes
 - b. 112-A07 or A09, accepts 5/8" drywall finish
 - c. 118-A07 or A09, accepts all finishes
 - d. 115-A24 or A18, pleated seal, accepts acoustical ceiling tile only
 5. Wall/Ceiling Systems – Surface Mount, Wall/Wall (and Ceiling/Ceiling) or Wall/Corner (and Ceiling/Wall)
 - a. 104-A07 or A09, accepts all finishes
 - b. 113-A07 or A09, accepts drywall finish
 - c. 113A-A07 or A09, preassembled, accepts drywall finish
 - d. 114-A07 or A09, pleated seal, accepts drywall finish
- D. JointMaster 100 Series – System Accessories:
- a. Fabric Reinforced Vapor Barrier for horizontal and vertical applications (as required).
 - b. Insulated Vapor Barrier for horizontal and vertical applications (as required).
 - c. Drainage Fittings for horizontal and vertical applications (as required).

2.04 FABRICATION

- A. Field assemble components provided in standard lengths with pre-packaged fasteners and accessories.
- B. Fabricate special transitions and corner fittings as required. Miter and heat weld elastomeric seals for monolithic splices and transitions.

2.05 FINISHES

- A. Aluminum:
1. Floors: Mill finish standard
 2. Walls and Ceilings: Standard Class II Clear Anodized for 104 and 112 [Color Anodized] [Kynar Painted] [Custom Color Painted] optional. Mill Finish Standard for 101, 113, 114, 115, and 118

PART 3 – EXECUTION

3.01

- A. Verify that structural gap and blockout dimensions are in conformance with manufacturer's submittal data. See manufacturer for recommended tolerances.

3.02 INSTALLATION

- A. Joint systems: Install in accordance with manufacturer's instructions. Align work plumb, level and flush with adjacent surfaces. Rigidly anchor to substrate. Allowances should be made where actual structural gap at time of installation varies from nominal design gap. No shimming allowed.
- B. Fire Rated Assemblies: Where required, install to manufacturer's instructions.
- C. Vapor Barrier: Where required, install to manufacturer's instructions. Provide drainage fittings where required.

3.03 PROTECTION AND CLEANING

- A. Protect installation from damage by work of others.
- At completion of the installation, clean exposed surfaces with non-solvent cleaner.