

# 674 Series

G01 - Roof to Roof

G02 - Roof to Wall



**Movement Rating  $\pm$  50%**

## Product Guide



Seismic



Exterior



Fire Rated  
Option



Vapor Barrier  
Option

- ▶ Weatherproof roof system that will remain watertight during the severest seismic events
- ▶ Splicing kits provided for simple installation
- ▶ Black EPDM bellows with galvanized flanges standard
- ▶ White EPDM bellows available
- ▶ Optional Neoprene bellows available
- ▶ Optional PVC bellows and flange available
- ▶ Optional stainless steel, copper, aluminum and EPDM flanges available
- ▶ Factory preformed transitions available

Application	System	W		H1		H2		S		B		Movement +/-			
		Joint Width		Frame Height 1		Height 2		Sightline		Blockout		Horizontal		Vertical	
		US	mm	US	mm	US	mm	US	mm	US	mm	US	mm	US	mm
Roof/Roof	674-G01-050	2"	51	*	*	*	*	*	*	*	*	1"	25	1"	25
	674-G01-075	3"	76	*	*	*	*	*	*	*	*	1 1/2"	38	1 1/2"	38
	674-G01-100	4"	102	*	*	*	*	*	*	*	*	2"	51	2"	51
	674-G01-150	6"	152	*	*	*	*	*	*	*	*	3"	76	3"	76
	674-G01-200	8"	203	*	*	*	*	*	*	*	*	4"	102	4"	102
Roof/Wall	674-G02-050	2"	51	*	*	*	*	*	*	*	*	1"	25	1"	25
	674-G02-075	3"	76	*	*	*	*	*	*	*	*	1 1/2"	38	1 1/2"	38
	674-G02-100	4"	102	*	*	*	*	*	*	*	*	2"	51	2"	51
	674-G02-150	6"	152	*	*	*	*	*	*	*	*	3"	76	3"	76
	674-G02-200	8"	203	*	*	*	*	*	*	*	*	4"	102	4"	102

May be available in larger widths, please contact InPro Corporation for more details.

IPC.1198/REV.5

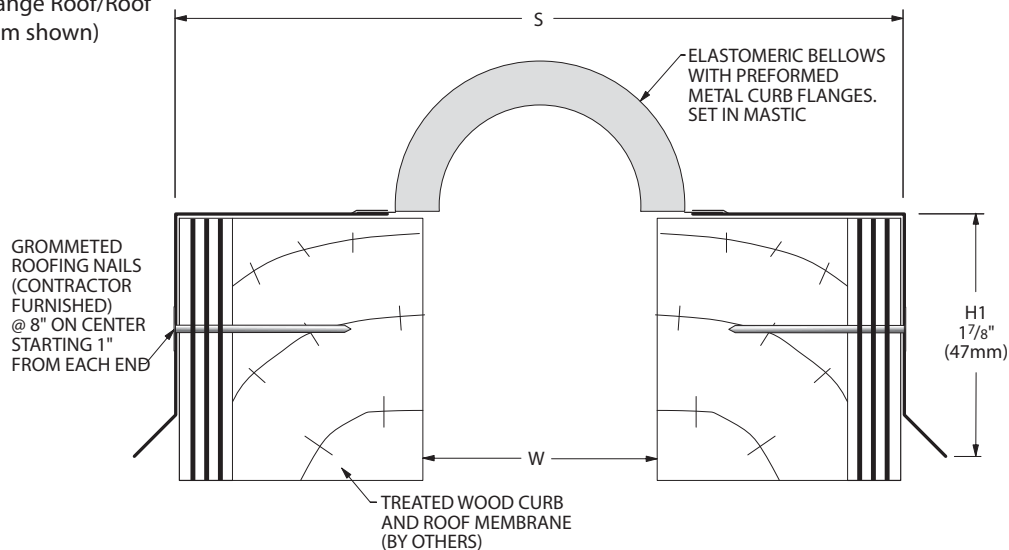
Inprocorp.com • 800.222.5556 • 262.679.9010  
World Headquarters S80 W18766 Apollo Drive, Muskego, WI 53150 USA

**JOINTMASTER®**  
EXPANSION JOINT SYSTEMS  
A DIVISION OF INPRO®

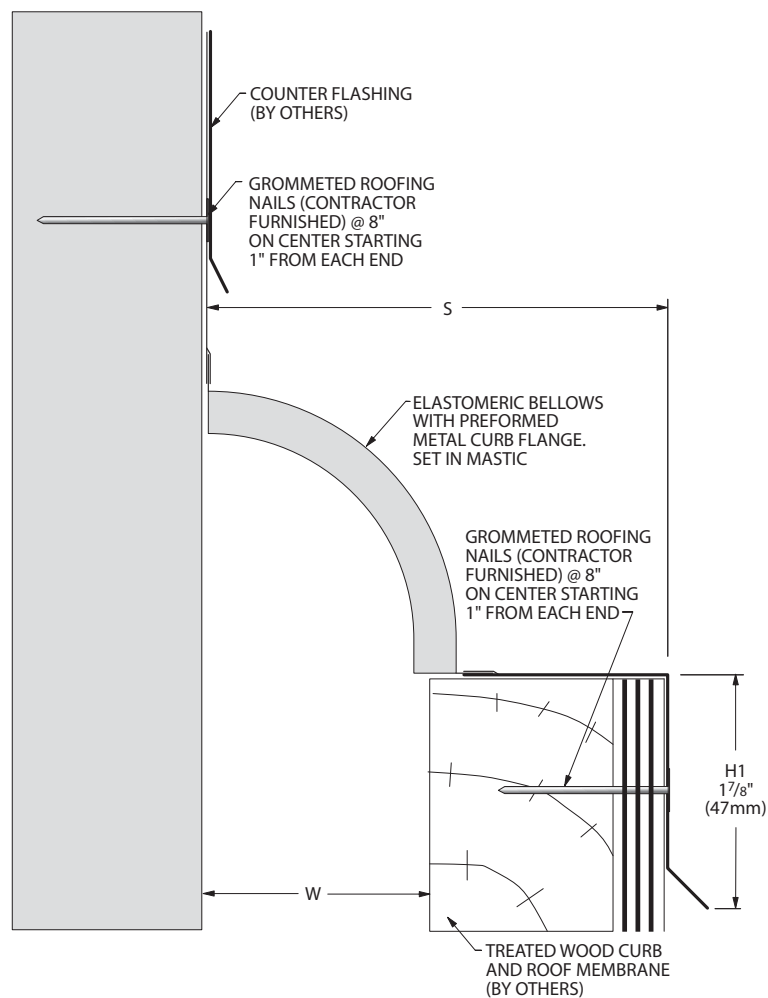
# 674 Series

## Bellows Roof Systems

674-G01 Curb Flange Roof/Roof  
(2" (50mm) system shown)



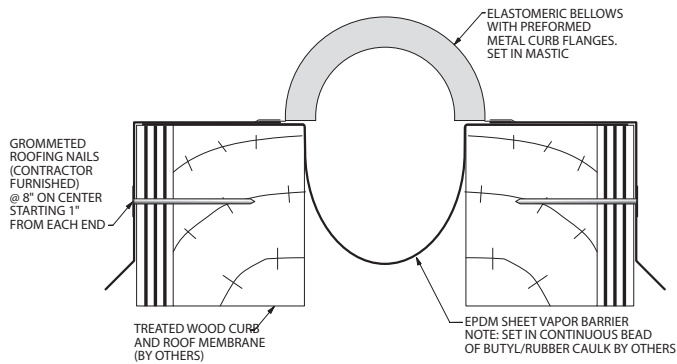
674-G02 Curb Flange Roof/Wall  
(2" (50mm) system shown)



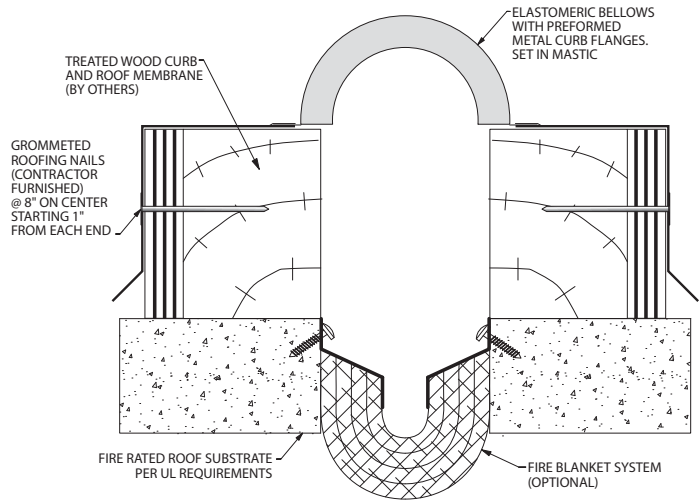
# 674 Series

## Options

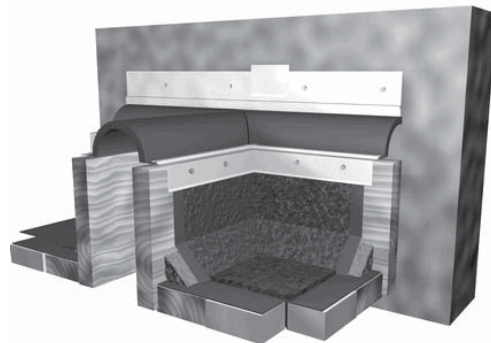
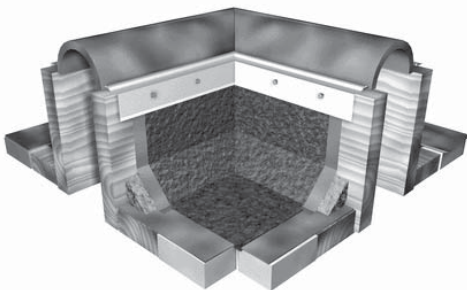
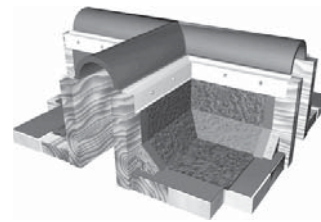
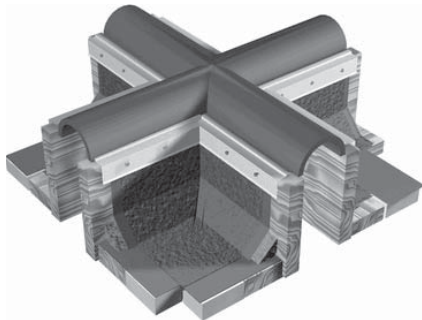
Wrap Around Vapor Barrier  
(674-G01-050 system shown)



Fire Blanket System  
(674-G01-050 system shown)



Factory Preformed Intersections/Transitions  
Consult factory for available configurations.



# 600 Series

## Suggested Specifications

### PART 1 - GENERAL

#### 1.01 SUMMARY

A. Furnish Expansion Joint Systems in accordance with the drawings and general provisions of the contract.

#### 1.02 WORK INCLUDED

A. Furnish complete JointMaster/InPro Corporation Expansion Joint Systems.

1. Interior wall expansion joint systems.
2. Interior ceiling expansion joint systems.
3. Exterior wall expansion joint systems.
4. Exterior floor expansion joint systems.
5. Parking deck expansion joint systems.
6. Fire Rated Assemblies.

#### 1.03 RELATED WORK

A. Related work which is specified elsewhere.

1. Cast-In-Place Concrete: Section 03300.
2. Unit Masonry: Section 04810.
3. Structural Steel: Section 05120.
4. Light Gage Metal Framing: Section 05400.
5. Roof Expansion Assemblies - 07716
6. Sheet Metal Flashing and Trim: Section 7620.
7. Cement Plaster: Section 09210.
8. Gypsum Wallboard: Section 09260.

#### 1.04 REFERENCES

A. Publications listed herein are part of this specification. See below for standards where applicable to the product listed:

1. American Society for Testing and Materials (ASTM):
  - a. ASTM B 221, Standard Specifications for Aluminum and Aluminum-Alloy Extruded Bars, Rods, Wire, Shapes, and Tubes.
  - b. ASTM B 209 "Standard Specifications for Aluminum and Aluminum Alloy Sheet and Plate."
- c. ASTM E1399 "Cyclic Movement and Measuring of Minimum/Maximum Joint Widths of Architectural Joint Systems."

#### 1.05 DEFINITIONS

A. Define industry and product terms as necessary.

#### 1.06 SYSTEM DESCRIPTION

- A. Joint systems shall permit limited movement of joint without disengagement.
1. Specify x-axis joint movement (horizontal).
  2. Specify y-axis joint movement (vertical).
  3. Specify z-axis joint movement (lateral).
- B. Fire Rated Assemblies shall meet requirements of Underwriters Laboratories, in accordance with [ANSI/U.L. No. 263 and ASTM E 119/E 814] [UL 2079] [including hose stream test at full rated period]. Underwriter's Laboratories shall classify assemblies. Fire rating shall be not less than the fire rating of adjacent construction.

#### 1.07 QUALITY ASSURANCE

- A. Manufacturer: Furnish assemblies from one (1) manufacturer with a minimum of five (5) years of experience in the design, engineering and fabrication of expansion joint systems.
- B. Installer: Firm with not less than three (3) years of successful experience in the installation of systems similar to those required by this project and acceptable to the manufacturer of the system.

#### 1.08 SUBMITTALS

- A. Manufacturer's specifications, technical data, installation instructions, and detail drawings for each system.
- B. Certificates or other documentation confirming UL approved compliance with fire resistance rating of fire barrier assemblies.
- C. Sample of specified systems where required.

#### 1.09 DELIVERY AND STORAGE

- A. Provide temporary protective covers on [anodized aluminum] [stainless steel] finished surfaces.
- B. Deliver joint systems to jobsite in new, clean, unopened cartons or crates of sufficient size and strength to protect materials during transit.
- C. Store components in original containers in a clean, dry location. Inspect materials upon arrival, monitor for adverse environmental impacts.

#### 1.10 SEQUENCING

- A. Submittals shall be completed and submitted within a reasonable amount of time after award of subcontract.
- B. Subcontract for the work of this section shall be planned to allow sufficient time for manufacturer's production and delivery scheduling.

#### 1.11 WARRANTY

- A. Standard JointMaster/InPro Corporation limited warranty against material and manufacturing defects for a period of not less than five (5) years when installed in accordance with manufacturer's recommendations.

### PART 2 - PRODUCTS

#### 2.01 MANUFACTURER

- A. JointMaster/InPro Corporation  
S80 W18766 Apollo Drive  
Muskego, WI 53150 USA  
Phone: (800) 222-5556  
Fax: (888) 715-8407  
Email: service@inprocorp.com
- B. Substitutions: Not permitted.

#### 2.02 MATERIALS

- A. Aluminum: ASTM B 221, alloy 6063-T6, alloy 5052-H32.
- B. Stainless Steel Plates (optional): SS304.
- C. Elastomeric Seal (on series 611/612/615/616/620/621): Pleated santoprene seal with durometer of 70 shore A. Colors to be selected from manufacturer's standard range - Black, Gray, Beige, Bright White, and Off-White. Custom colors available.
1. Seal must be GREENGUARD Gold certified.
- D. Vapor Barrier/Back Seal: 40 mils thick integral PVC (615 and 620) or 45 mil fabric reinforced EPDM (651, 616, and 621).
- E. Insulated Vapor Barrier (optional): Owens Corning EcoTouch Batt insulation sandwiched by an adhered and pinned 45 mil fabric reinforced EPDM.
- F. Fire Barrier (optional): [925 Mineral Wool and Sealant System to UL2079] [935 Textiled Wool and Silicone Sealant System to UL2079] [950 Blanket System to UL2079 with hose stream test to walls] or [F520 Blanket System to UL2079 with hose stream test to walls] [990/995 Foam System to UL2079 with hose stream test to walls] required for indicated fire resistance rating.
- G. Fasteners, accessories and other materials required for complete installation in accordance with the manufacturer's instructions.
- H. Centering Bars (where required) shall be fabricated from zinc coated steel.

#### 2.03 INTERIOR/EXTERIOR JOINT SYSTEMS FOR WALLS

- A. JointMaster 600 Series - Pleated Seal (where required):
1. Seal profile maintains inherent stability due to its unique engineered design.
    - a. Bellows depth not to exceed 5/8" [15.875 mm].
    2. Wall thickness not less than 1/8" [3.175 mm]
    3. Seal profile requires alignment pin holes.
- B. JointMaster 600 Series - System Profiles:
1. Interior Wall Systems - Recessed/Flush Mount, Wall/Wall (and Ceiling/Ceiling) or Wall/Corner

(and Ceiling/Wall)

- a. 611-A07 or A09, pleated seal system suitable for all wall finishes.
  - b. 612-A07 or A09, pleated seal with intermediate frame and center bar system suitable for all wall finishes.
2. Exterior Wall Systems - Recessed/Flush Mount, Wall/Wall (and Ceiling/Ceiling) or Wall/Corner (and Ceiling/Wall)
- a. 615-A07 or A09, pleated seal system with back seal suitable for all wall finishes.
  - b. 616-A07 or A09, pleated seal with intermediate frame and center bar system with back seal suitable for all wall finishes.
  - c. 601-A07 or A09, minimal sightline pan system suitable for all wall finishes. Depth of pan must accommodate varying finishes from 1/2" [13mm] to 2" [51mm].
3. Exterior Wall Systems - Surface Mount, Wall/Wall (and Ceiling/Ceiling) or Wall/Corner (and Ceiling/Wall)
- a. 651-A07 or A09, cover plate system with back seal suitable for all finishes.
  - b. 620-A07 or A09, pleated seal system with back seal suitable for all finishes.
  - c. 621-A07 or A09, pleated seal system with intermediate frame and center bar with back seal suitable for all finishes.
- C. JointMaster 600 Series - System Accessories:
- a. Insulated Vapor Barrier for vertical applications (as required).
  - b. Drainage Fittings for horizontal and vertical applications (as required).
  - c. Installation adhesive for 611, 612, 615, 616 (as required).

#### 2.04 FABRICATION

- A. Field assemble components provided in standard lengths with pre-packaged fasteners and accessories.
- B. Fabricate special transitions and corner fittings as required. Miter and weld elastomeric seal as applicable.

#### 2.05 FINISHES

- A. Aluminum:
1. Standard Mill finish for 611/612, 615/616, 651, 620/621, and 601 [Color Anodized] [Kynar Painted] [Custom Color Painted] optional.
- B. Stainless Steel: 2B (optional for 651 cover plate)

### PART 3 - EXECUTION

#### 3.01

- A. Verify that structural gap and sightline dimensions are in conformance with manufacturer's submittal data.

#### 3.02 INSTALLATION

- A. Joint systems: Install in accordance with manufacturer's instructions. Align work plumb, level and flush with adjacent surfaces. Rigidly anchor to substrate. Allowances should be made where actual structural gap at time of installation varies from nominal design gap.
- B. Set centering bars @ 18 inches on center. Centering bars shall engage in the frame.
- C. Fire Rated Assemblies: Where required, install to manufacturer's instructions.
- D. Vapor Barrier: Where required, install to manufacturer's instructions. Provide drainage fittings where required.

#### 3.03 PROTECTION AND CLEANING

- A. Protect installation from damage by work of others.
- B. At completion of the installation, clean exposed surfaces with non-solvent cleaner.
- END OF SECTION