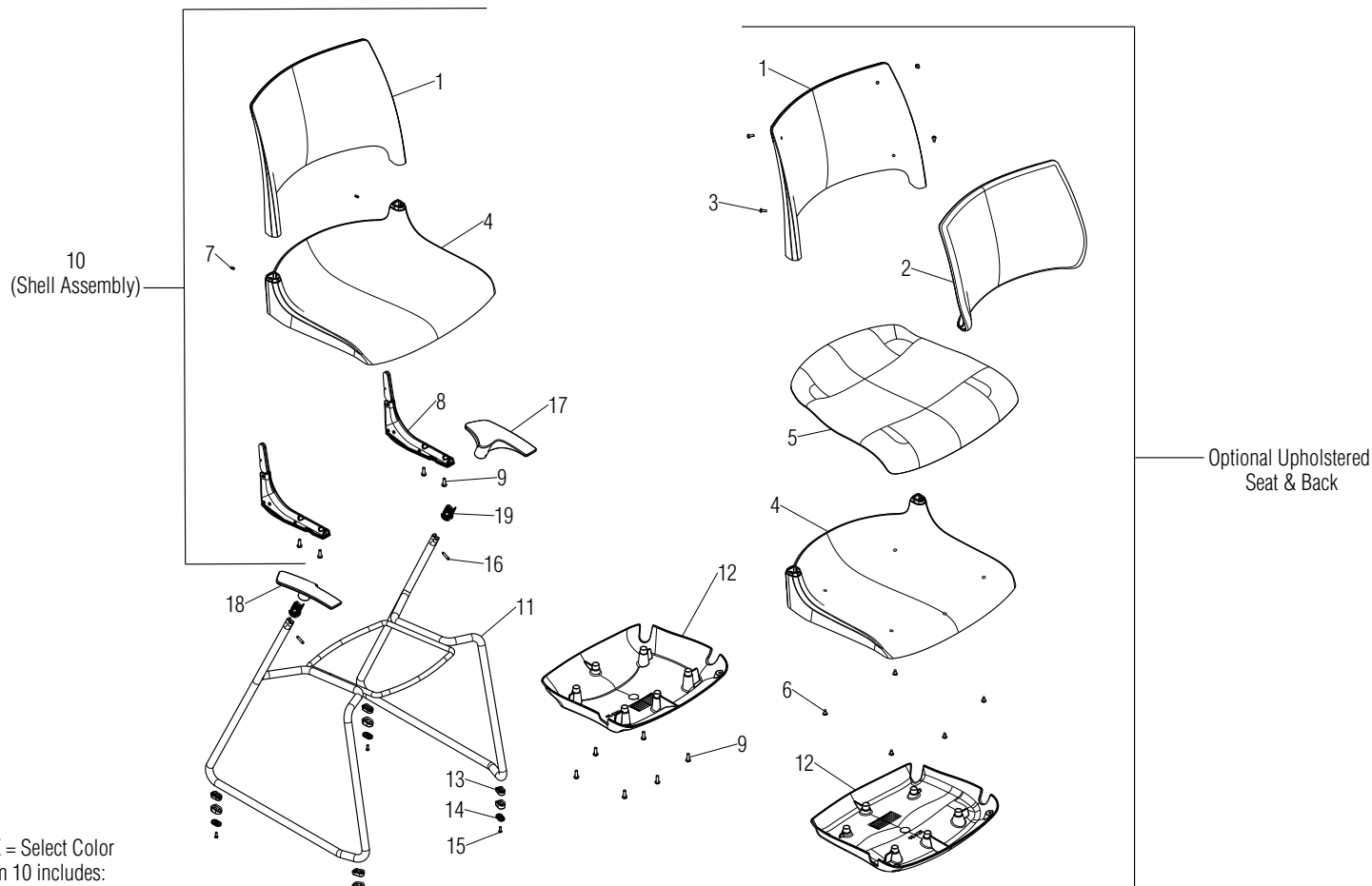


Parts Diagram ■

Doni™ Seating Collection
Sled Base Armchair

June 2016



.XX = Select Color

Item 10 includes:

Poly Seat & Back - Items 1, 4, 7, 8 and 9

Upholstered Seat - Items 1, 4, 5, 6, 7, 8 and 9

Upholstered Seat & Back - Items 1, 2, 3, 4, 5, 6, 7, 8 and 9

10.0128 requires part number PC.12.0583

PT.06.6033 requires part numbers PT.06.6034 and PC.12.0583

PT.06.6032.BL and PT.06.6032.N require part number 12.4016

Item	Part Number	Item Description	Qty	Item	Part Number	Item Description	Qty
1	4201.XX	Backrest, Chair (Poly Back Only)	1	11	46.4235	Weldment, Sled Base Arm Chair Chair Frame	1
	4201.U.XX	Backrest, Chair with Liner (Upholstered Back Only)	1	12	46.4212.XX	Shroud, Poly Stack Bumper (Poly Seat Only)	1
2	DNRBC.XX	Cushion, Backrest (Upholstered Back Only)	1		46.4211.XX	Shroud, Upholstered Seat Stacking (Upholstered Seat Only)	1
3	12.0110.XX	Screw, 10-24 x 1/2" PTH (Upholstered Back Only)	4	13	PT.06.6033	Stainless Steel Glide (GSS) Plastic Housing	4
4	4200.XX	Seat, Chair (Poly Seat Only)	1		PT.06.6032.BL	Black Plastic Glide (GBL)	4
	4200.U.XX	Seat, Chair with Liner (Upholstered Seat Only)	1		PT.06.6032.N	Non-Marring Plastic Glide (GNM)	4
5	DNRSC.XX	Cushion, Seat (Upholstered Seat Only)	1		10.0128	Non-Skid (Dual Durometer) Glide (GNS)	4
6	12.0055.CZ	Screw, #10-16 x 1/2" PTH Type AB T/F ZC (Upholstered Seat Only)	5	14	PT.06.6034	Stainless Steel Glide (GSS) Steel Insert	4
7	46.4230	Set Screw, M5 x 0.8 x 10 Hex Socket	2	15	12.4016	Screw, #8 x 1/2" PPH Type 25 T/C ZC	4
8	46.4202	Assembly, Backrest Support Mechanism	2		PC.12.0583	Screw, #8 x 1/2" PPH Type-B T/SZC	4
9	12.0011	Screw, M6 x 18 PPH BosScrew	10	16	46.4274	Set Screw, M5 x 0.8 x 23.5 Hex Socket	2
10	4225.XX	Assembly, Seat, Back & Mechanism	1	17	46.4213.L.XX	Armrest, LH Molded	1
	4225.U.XX	Assembly, Seat, Back & Mechanism w/ Upholstered Seat	1	18	46.4213.R.XX	Armrest, RH Molded	1
	4225.B.XX	Assembly, Seat, Back & Mechanism w/ Upholstered Seat & Back	1	19	46.4223	Sleeve, Sled Frame Armrest Shim	2