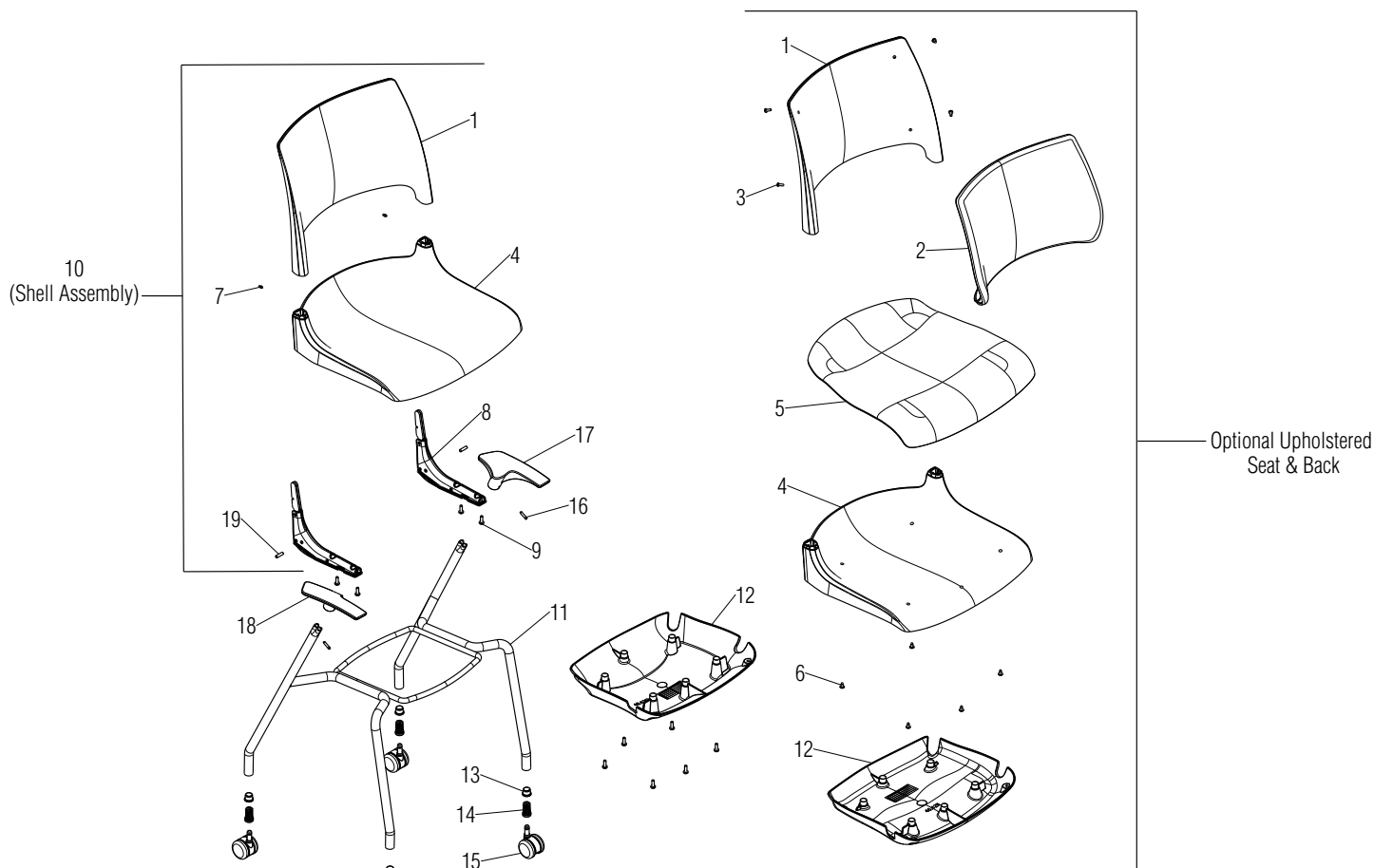


Parts Diagram ■

Doni™ Seating Collection
4-Leg Armchair

June 2016



.XX = Select Color

Item 10 includes:

Poly Seat & Back - Items 1, 4, 7, 8 and 9

Upholstered Seat - Items 1, 4, 5, 6, 7, 8 and 9

Upholstered Seat & Back - Items 1, 2, 3, 4, 5, 6, 7, 8 and 9

Glide equipped frames can only accept glides

Caster equipped frames can only accept casters

Item	Part Number	Item Description	Qty	Item	Part Number	Item Description	Qty
1	4201.XX	Backrest, Chair (Poly Back Only)	1	11	46.4232.XX	Weldment, 4-Leg Glide Armchair Frame (Glide Chair Only)	1
	4201.U.XX	Backrest, Chair with Liner (Upholstered Back Only)	1		46.4238.XX	Weldment, 4-Leg Caster Armchair Frame (Caster Chair Only)	1
2	DNRBC.XX	Cushion, Backrest (Upholstered Back Only)	1	12	46.4212.XX	Shroud, Poly Stack Bumper (Poly Seat Only)	1
3	12.0110.XX	Screw, 10-24 x 1/2" PTH (Upholstered Back Only)	4		46.4211.XX	Shroud, Upholstered Seat Stacking (Upholstered Seat Only)	1
4	4200.XX	Seat, Chair (Poly Seat Only)	1	13	53.6550	Arm Cap/Glide, Plastic (Glide Chairs Only)	4
	4200.U.XX	Seat, Chair with Liner (Upholstered Seat Only)	1		10.0190	Glide, Versa Carpet (Glide Chairs Only)	4
5	DNRSC.XX	Cushion, Seat (Upholstered Seat Only)	1	14	46.5397	Assembly, Caster Bushing (Caster Chairs Only)	4
6	12.0055.CZ	Screw, #10-16 x 1/2" PTH Type AB T/F ZC (Upholstered Seat Only)	5		46.4116	Caster, 50mm Carpet (Caster Chairs Only)	4
7	46.4230	Set Screw, M5 x 0.8 x 10 Hex Socket	2	15	46.4113	Caster, 50mm Hard Floor (Caster Chairs Only)	4
8	46.4202	Assembly, Backrest Support Mechanism	2	16	46.4274	Set Screw, M5 x 0.8 x 23.5 Hex Socket	4
9	12.0011	Screw, M6 x 18 PPH BosScrew	10	17	46.4213.L.XX	Armrest, LH Molded	1
10	4225.XX	Assembly, Seat, Back & Mechanism	1	18	46.4213.R.XX	Armrest, RH Molded	1
	4225.U.XX	Assembly, Seat, Back & Mechanism w/ Upholstered Seat	1	19	46.4227	Stop Pin, Ø 1/4" x 7/8" Spring (Wallsaver Chairs Only)	2
	4225.B.XX	Assembly, Seat, Back & Mechanism w/ Upholstered Seat & Back	1				