

Assembly Instructions ■

Dōni™ Stack Chair Transport Dolly

November 2016

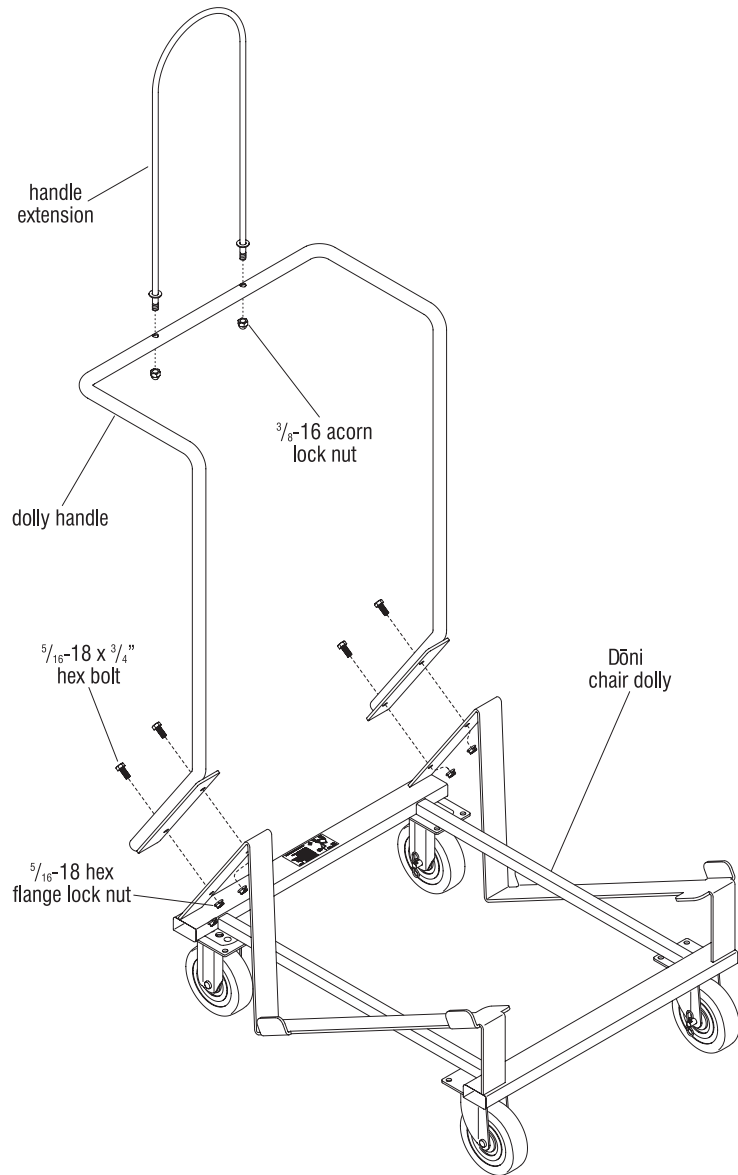


Figure 1

1. Position the dolly handle mounting flanges against the chair dolly mounting locations as illustrated and align four mounting holes. Using four $\frac{5}{16}$ -18 x $\frac{3}{4}$ " hex bolts and hex flange lock nuts, secure the handle to the dolly (Figure 1).
2. Insert the threaded ends of the handle extension through the mounting holes in the top of the dolly handle and secure using two $\frac{3}{8}$ -16 acorn lock nuts (Figure 1).
3. Reference the Dōni Dolly label on the unit for proper use of the dolly (Figure 1).



Assemble units as described herein only. To do otherwise may result in instability. All screws, nuts and bolts must be tightened securely and must be checked periodically after assembly. Failure to assemble properly, or to secure parts may result in assembly failure and personal injury.