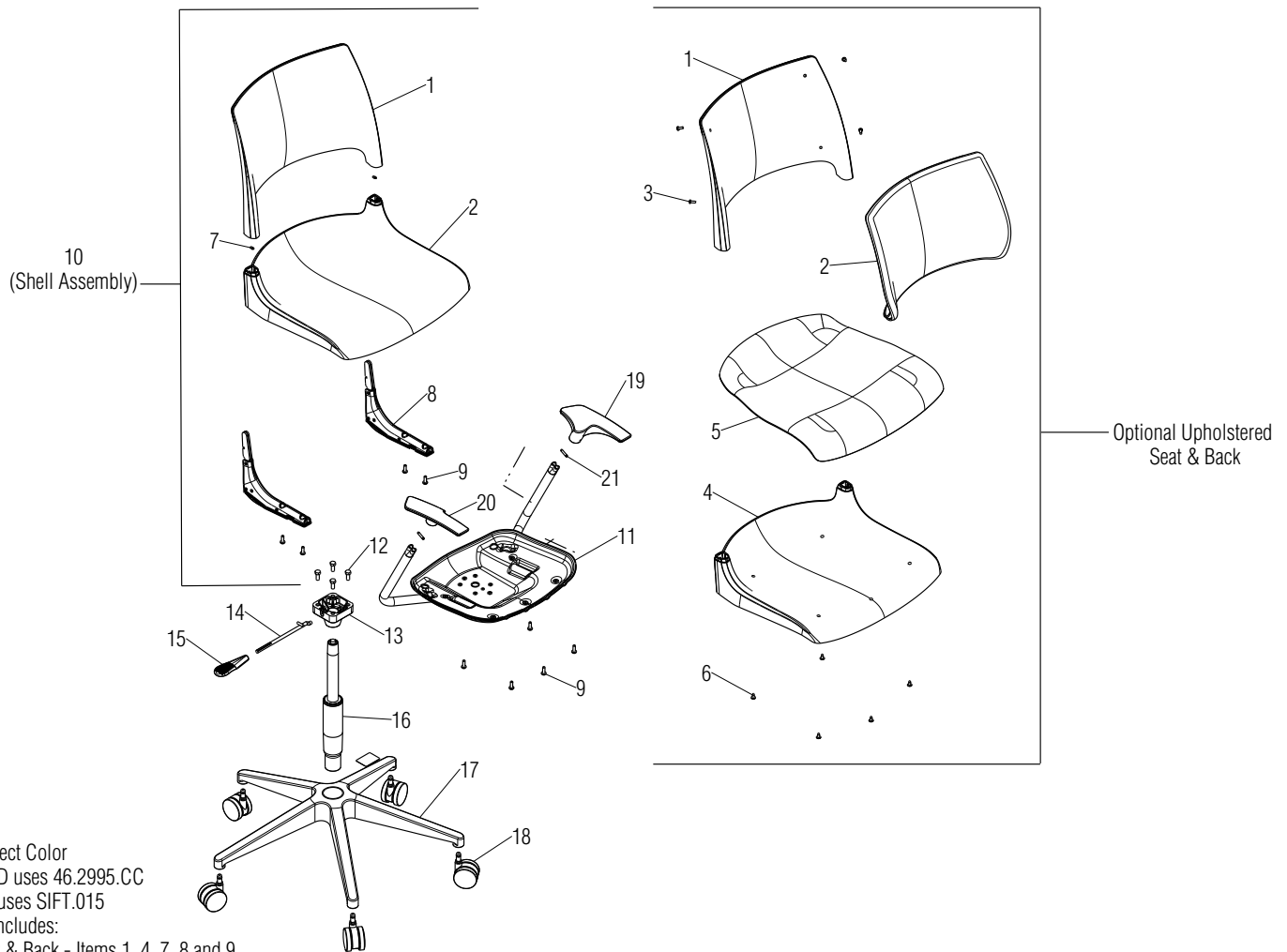


# Parts Diagram ■

Doni™ Seating Collection  
Task Armchair

June 2016



.XX = Select Color  
15.1084.D uses 46.2995.CC  
15.1078 uses SIFT.015  
Item 10 includes:  
Poly Seat & Back - Items 1, 4, 7, 8 and 9  
Upholstered Seat - Items 1, 4, 5, 6, 7, 8 and 9  
Upholstered Seat & Back - Items 1, 2, 3, 4, 5, 6, 7, 8 and 9

Item	Part Number	Item Description	Qty	Item	Part Number	Item Description	Qty
1	4201.XX	Backrest, Chair (Poly Back Only)	1	11	46.4241	Weldment, Pedestal Arm Chair Base Plate	1
	4201.U.XX	Backrest, Chair with Liner (Upholstered Back Only)	1	12	12.2003	Screw, 5/16-18 x 3/4" HX SLF F	4
2	DNRBC.XX	Cushion, Backrest (Upholstered Back Only)	1	13	PT.08.6000	Casting, Pedestal Cylinder	1
3	12.0110.XX	Screw, 10-24 x 1/2" PTH (Upholstered Back Only)	4	14	PT.15.6005	Lever, Height Adjustment	1
4	4200.XX	Seat, Chair (Poly Seat Only)	1	15	PT.06.6040	Handle, Pedestal	1
	4200.U.XX	Seat, Chair with Liner (Upholstered Seat Only)	1	16	15.1084.D	Cylinder, Pneumatic Height Adjustment, Type D	1
5	DNRSC.XX	Cushion, Seat (Upholstered Seat Only)	1		15.1078	Cylinder, Gas Seat Height Adjustment (Used w/ SIFT.015 Base)	1
6	12.0055.CZ	Screw, #10-16 x 1/2" PTH Type AB T/F ZC (Upholstered Seat Only)	5	17	46.2995.XX	Base, 5-Blade Cylinder	1
7	46.4230	Set Screw, M5 x 0.8 x 10 Hex Socket	2		SIFT.015	Aluminum Base, Sift Task Chair (Used w/ 15.1078 Cylinder)	1
8	46.4202	Assembly, Backrest Support Mechanism	2	18	09.0440.XX	Caster, 60mm Diameter Carpet	5
9	12.0011	Screw, M6 x 18 PPH BosScrew	9		09.0441.BL	Caster, 60mm Diameter Hard Floor	5
10	4225.XX	Assembly, Seat, Back & Mechanism	1	19	46.4213.L.XX	Armrest, LH Molded	1
	4225.U.XX	Assembly, Seat, Back & Mechanism w/ Upholstered Seat	1	20	46.4213.R.XX	Armrest, RH Molded	1
	4225.B.XX	Assembly, Seat, Back & Mechanism w/ Upholstered Seat & Back	1	21	46.4227	Stop Pin, $\varnothing$ 1/4" x 7/8" Spring (Wallsaver Chairs Only)	2

