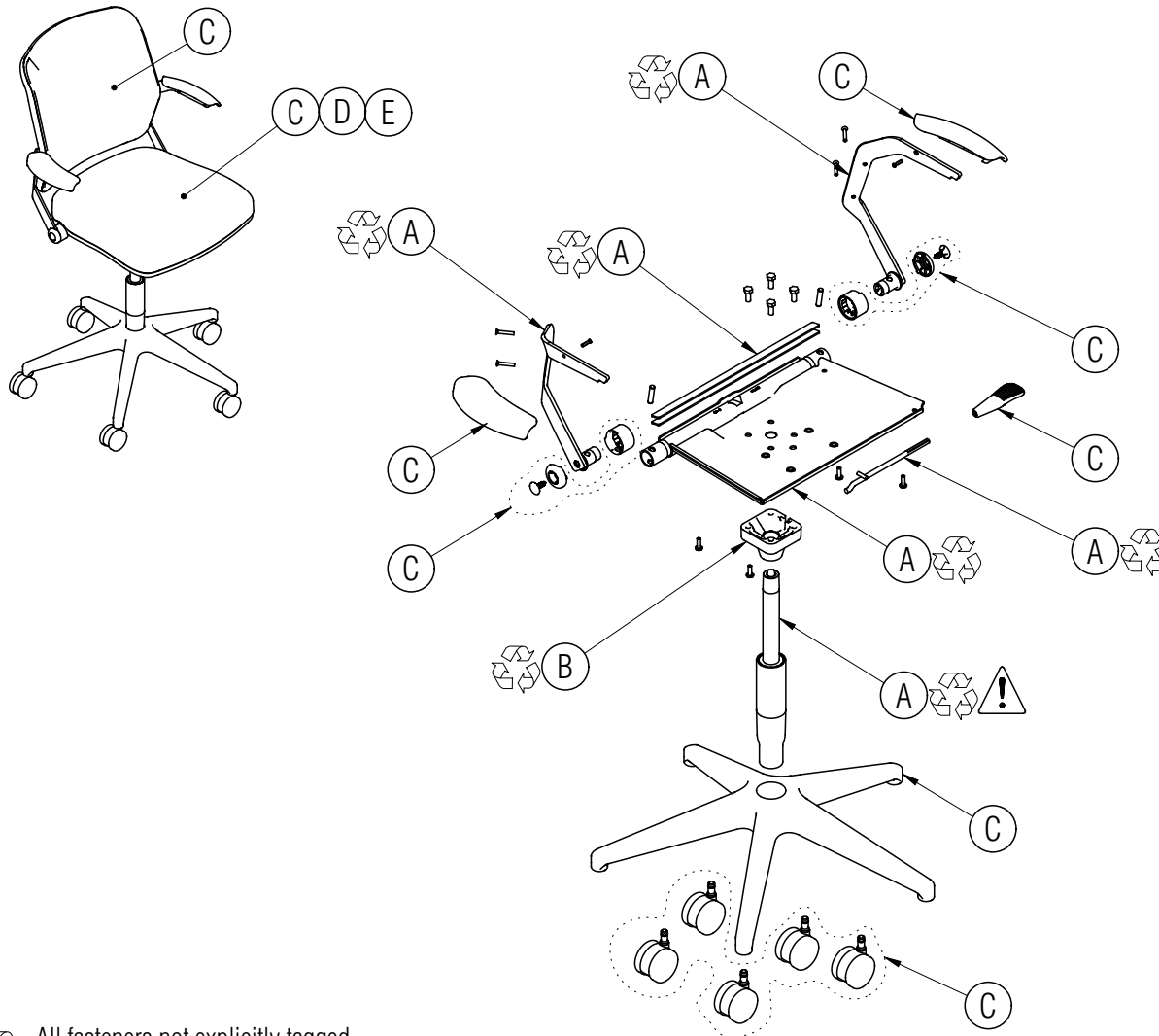


Disassembly Instructions

Torsion Air Task Chair

Material Type: A . Steel B. Aluminum C. Plastic D. Foam E. Fabric



Procedure:

1. Remove the screws holding the backrest onto the back supports and remove the backrest.
2. Remove the screws holding the seat to the seat pan and remove the seat. Remove the screws holding the seat shroud to the seat.
3. Remove the screws holding each arm cap to the back supports and remove the arm caps.
4. Pry out the end caps holding the arms onto the torsion tube and remove the outer bushings. Rotate each inner bushing so that the slot underneath is aligned with the pin. Push back on the support which will allow the pin to drop out. Pull the supports away from the frame and pull out the leaf springs.
5. Knock the seat pan off of the gas cylinder from underneath to remove it. Remove the screws holding the height adjustment mechanism onto the seat pan. Pull out the height adjustment lever and pull off the paddle.
6. Knock the gas cylinder out of the chair base from underneath.
WARNING: CONTENTS UNDER PRESSURE! REMOVE WITH CAUTION.
7. Remove the casters from the chair base.

General Notes:

1. Disassembly time: 15-20 minutes
2. This procedure assumes basic familiarity with hand tools and furniture terminology: no specialized training is required
3. All materials removed and disassembled shall be sorted and segregated with like materials and disposed of or recycled according to recycling availability or waste acceptance
4. For items to be recycled, refer to KI's End of Life Recycling Matrix and KI's End of Life Recovery Options Matrix, available at www.ki.com

All fasteners not explicitly tagged are Material Type A: Steel

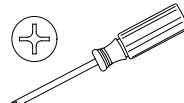
Required Tools



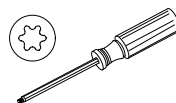
Gloves



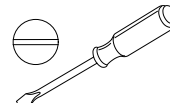
Safety Glasses



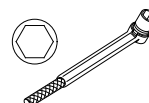
Philips Screwdriver



Torx Screwdriver



Flat Screwdriver



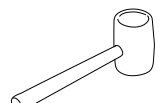
Hex Socket Wrench



Pliers



Pry Bar



Rubber Mallet