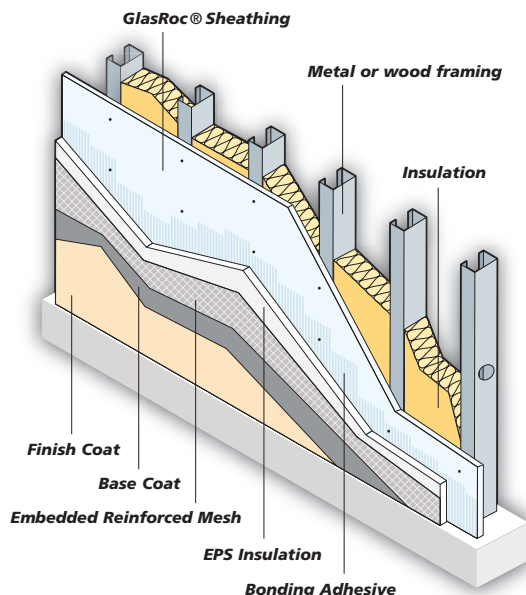


GlasRoc® Sheathing

Exterior Wall Systems



► As a component of an EIF System, GlasRoc® Sheathing offers:

- Superior water shed and surface water resistance.
- Excellent total water absorption resistance.
- Twelve month resistance to UV and environmental exposure.
- Improved insulation adhesion due to integrated board surface.
- Approved substrate by the major EIFS manufacturers.

Exterior Insulation and Finish Systems (EIFS) Applications

Superior Strength

GlasRoc® Sheathing integrally bonds its face coating to the moisture resistant core, resulting in a superior protective sheathing that will perform in all climates.

Dimensional Stability

GlasRoc® Sheathing resists delamination, rippling, buckling and sagging caused by environmental conditions, such as freeze/thaw, heat and humidity, and direct UV exposure. This technology, with its fully embedded glass mats, makes GlasRoc® Sheathing state-of-the-art, and will provide a flat and uniform substrate for EIFS applications.

Moisture Resistance

When properly installed, GlasRoc® Sheathing blocks liquid water without inhibiting water vapor transmission. The result is a protective surface that is extremely resistant to water damage.

Easy to Install

GlasRoc® Sheathing is easier to handle and install. No special tools are required. Score it with a standard utility knife. Install it with standard sheathing fasteners.

Referenced Standards

- ASTM C 514: Specification for Nails for the Application of Gypsum Board
- ASTM C 954: Specification for Steel Drill Screws for the Application of Gypsum Panel Products or Metal Plaster Bases to Steel Studs from 0.33 in. (0.84 mm) to 0.112 in. (2.84 mm) in Thickness
- ASTM C 1002: Standard Specification for Steel Drill Screws for the Application of Gypsum Panel Products or Metal Plaster Bases
- ASTM C 1177: Standard Specification for Glass Mat Gypsum Substrate for Use as Sheathing
- ASTM C 1280: Standard Specification for Application of Gypsum Sheathing
- ASTM C 1397: Practice for Application of Class PB Exterior Insulation and Finish Systems
- ASTM E 84 (CAN/ULC-S102): Test Method for Surface Burning Characteristics of Building Materials
- ASTM E 96: Test Methods for Water Vapor Transmission of Materials
- ASTM E 119/CAN/ULC-S101: Test Method for Fire Tests of Building Construction and Materials

