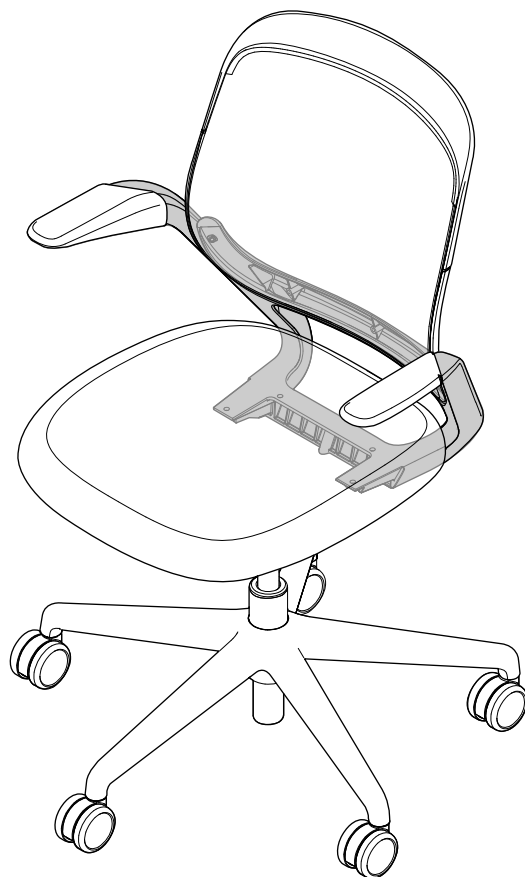
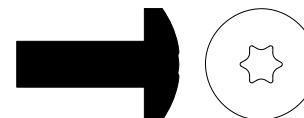


## 434 Cobi™ Chair - Arm or Armless Back Frame Replacement



### PROFILE OF HARDWARE FOR CLARITY

M6 x 16mm  
Pan Head Screw



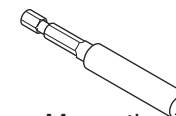
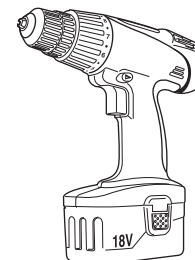
M6 x 25mm  
Pan Head Screw



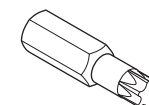
M8 x 25mm  
Button Head Screw



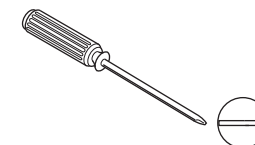
M6 x 45mm  
Wafer Head Screw



Magnetic  
Bit Holder



T-30



Small & Large  
flat-bladed screwdriver

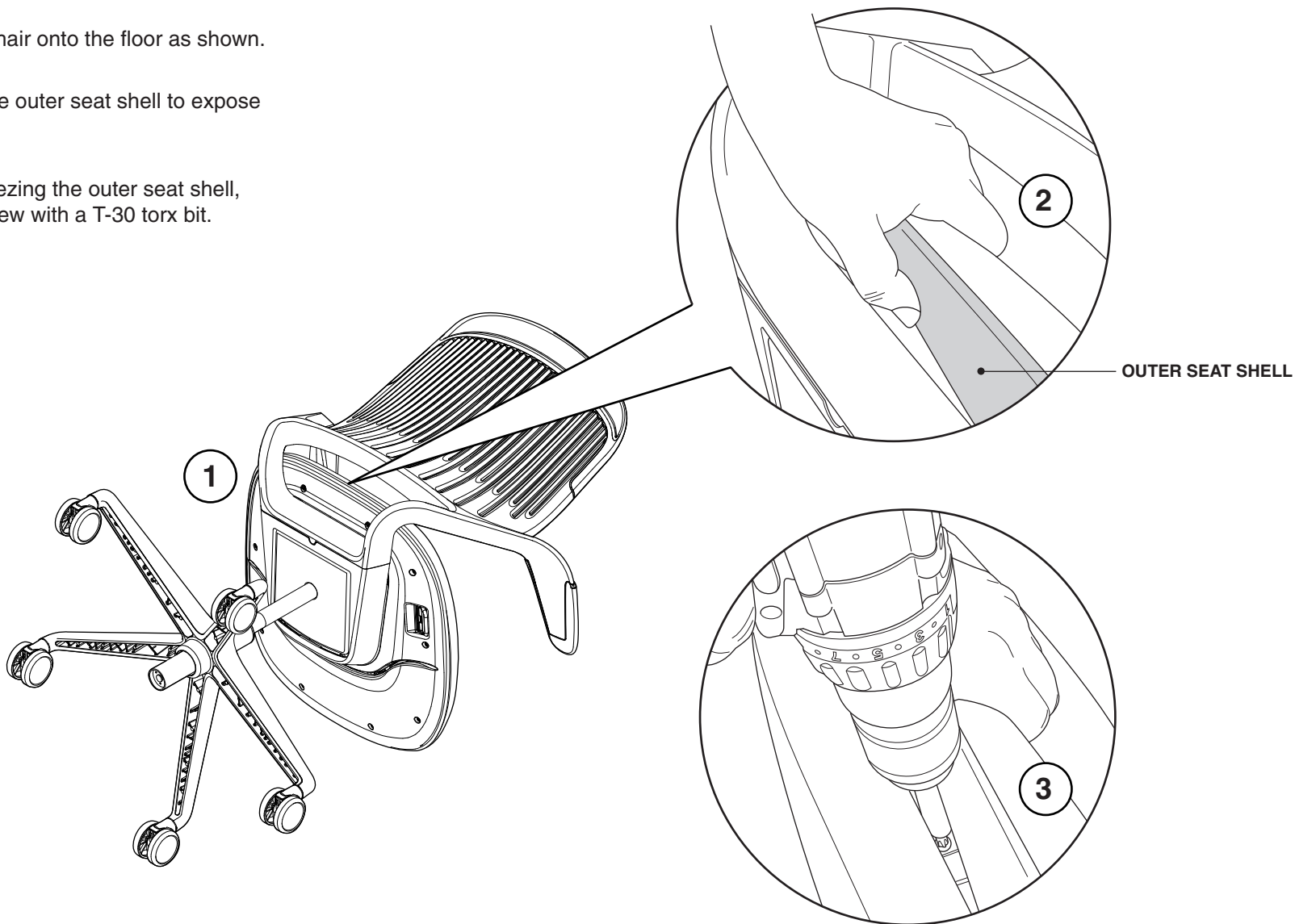
If you have a problem, question, or request, call  
your local dealer, or Steelcase Line 1 at  
**888.STEELCASE** (888.783.3522)  
for immediate action by people who want to help you.  
(Outside the U.S.A., Canada, Mexico, Puerto Rico,  
and the U.S. Virgin Islands, call: 1.616.247.2500)  
Or visit our website: [www.steelcase.com](http://www.steelcase.com)

© 2008 Steelcase Inc.  
Grand Rapids, MI 49501  
U.S.A.  
Printed in U.S.A.

**1.** Place the chair onto the floor as shown.

**2.** Squeeze the outer seat shell to expose the seat screw.

**3.** While squeezing the outer seat shell, remove the screw with a T-30 torx bit.

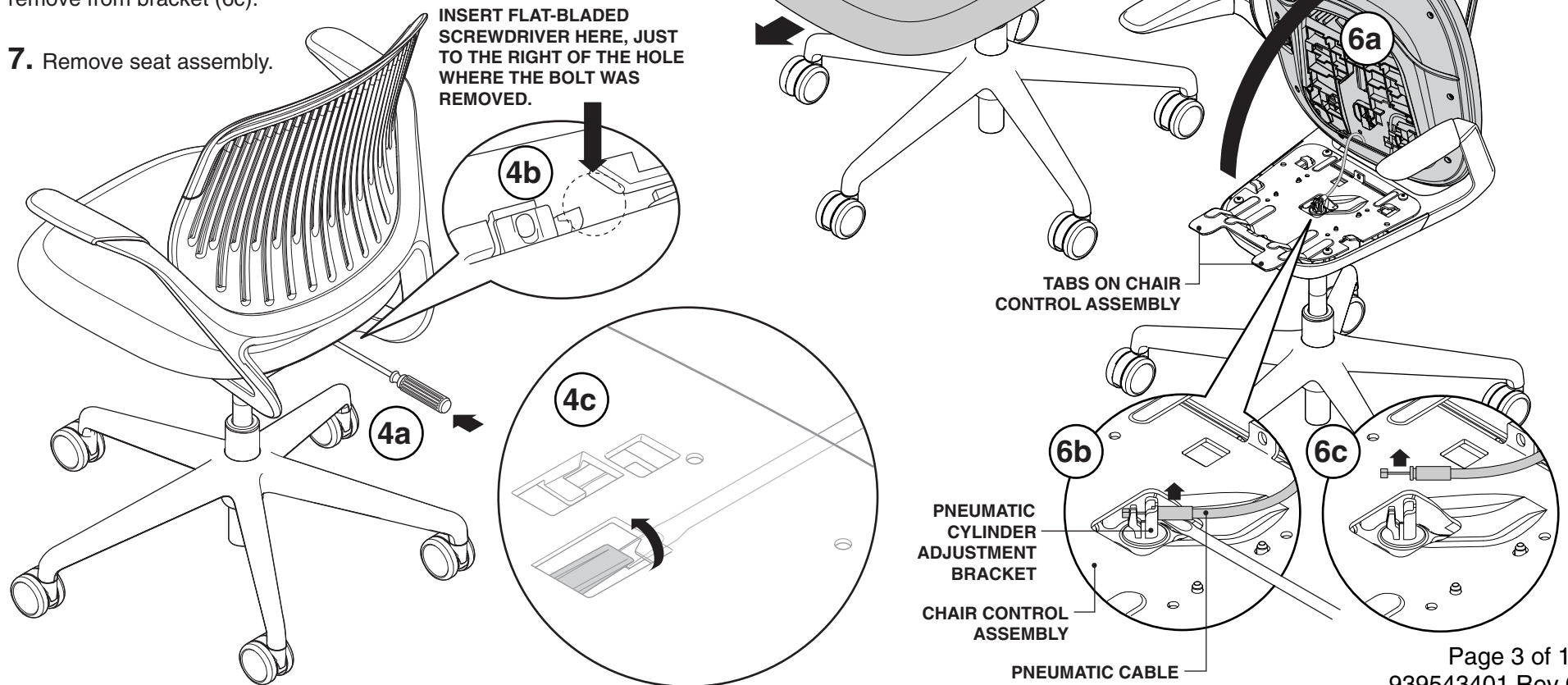


**4.** Place chair upright and insert a large flat-bladed screwdriver into the seat cushion (4a). Screwdriver must be inserted to the right of the hole where the bolt was removed in step 3 (4b). Insert the screwdriver inward until you locate the catch and then pry catch upward (4c). Grab the seat at the rear and pull sharply upward and forward while prying up on catch.

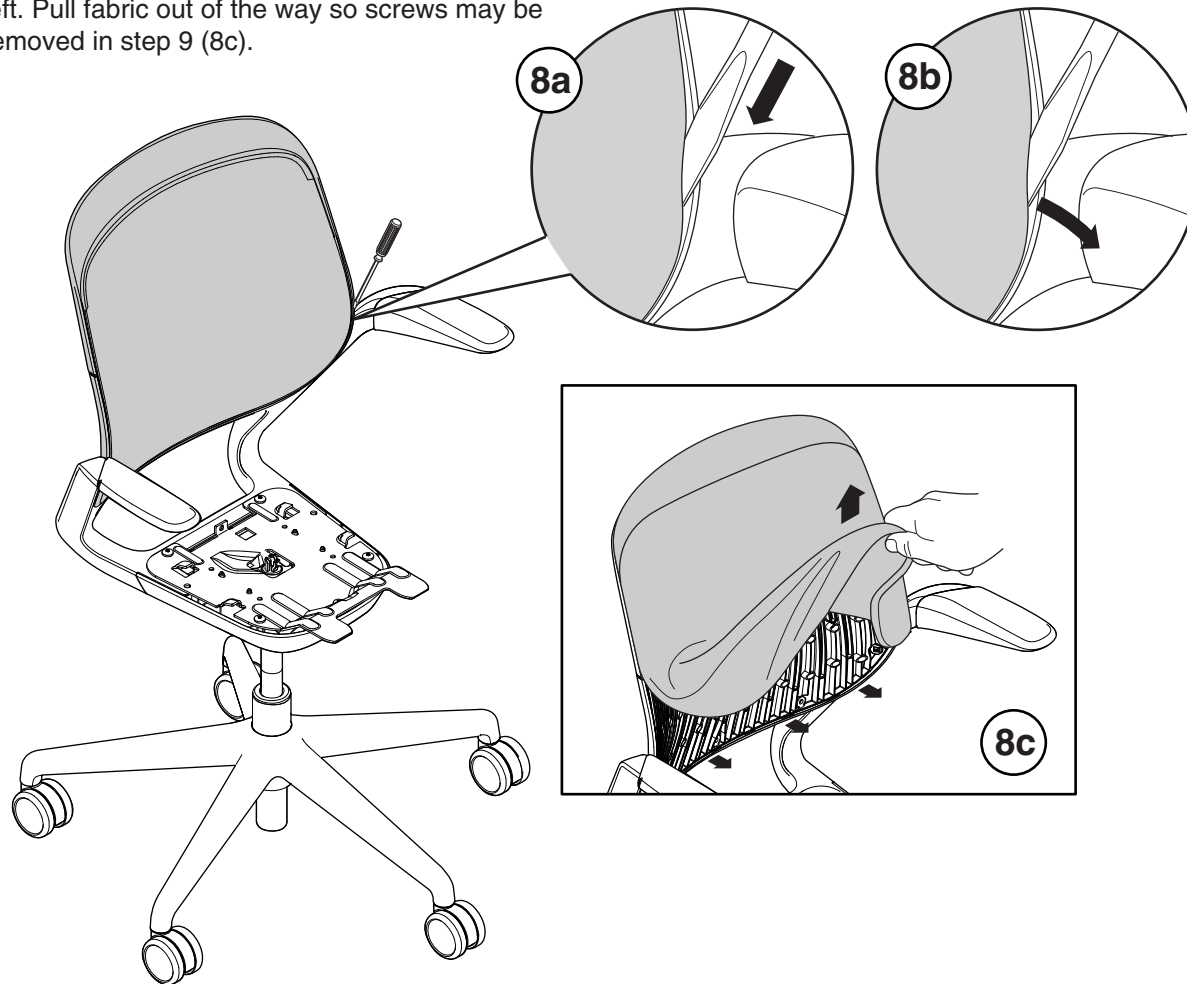
**5.** Carefully pull seat assembly forward to clear the tabs on the front of the chair control assembly. **DO NOT** pull seat assembly any farther forward than necessary to avoid kinking the pneumatic cable.

**6.** Flip seat assembly upward (6a). Locate the pneumatic cylinder adjustment bracket. Pry upward on pneumatic cable (6b) and then remove from bracket (6c).

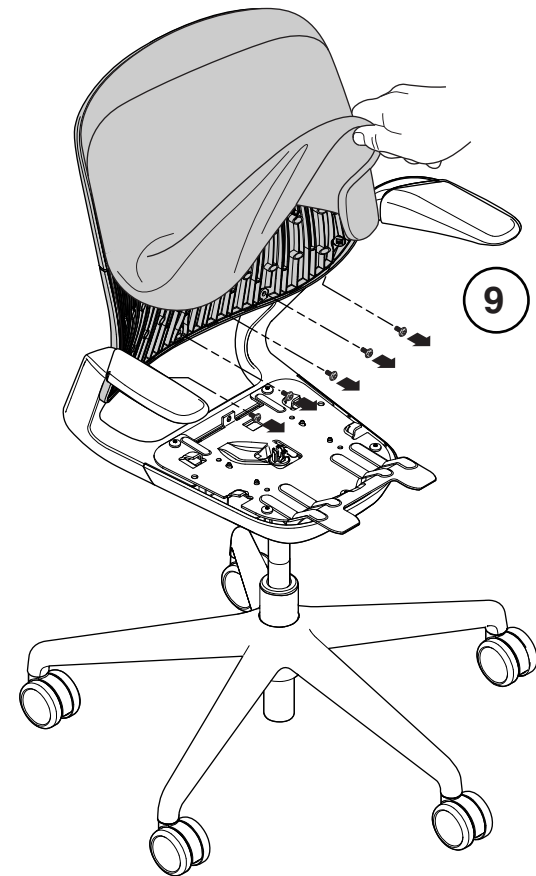
**7.** Remove seat assembly.



**8.** Begin removing the back fabric by first inserting screwdriver (8a) and prying as shown (8b). Once fabric is pried away from the back shell, it is now easy to loosen the rest of the fabric using your hand working right to left. Pull fabric out of the way so screws may be removed in step 9 (8c).



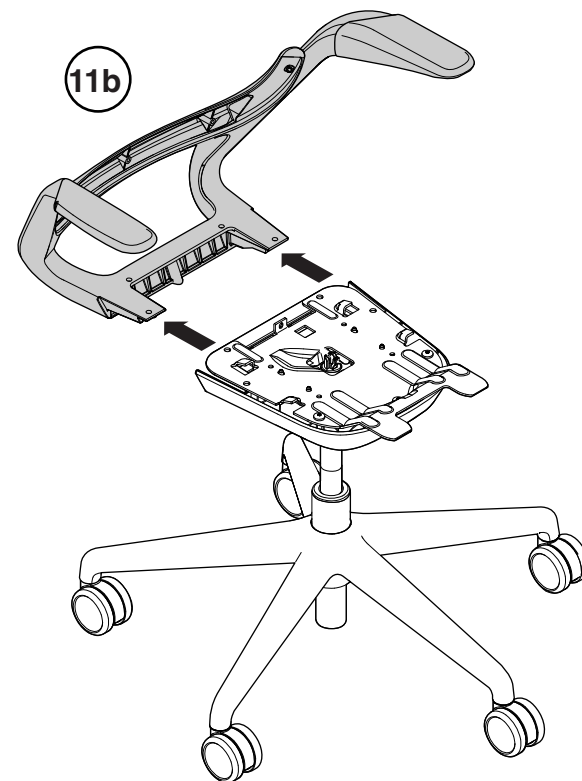
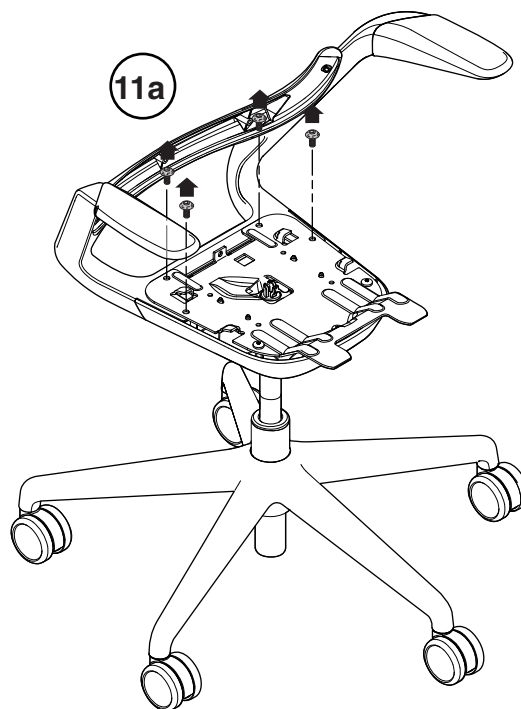
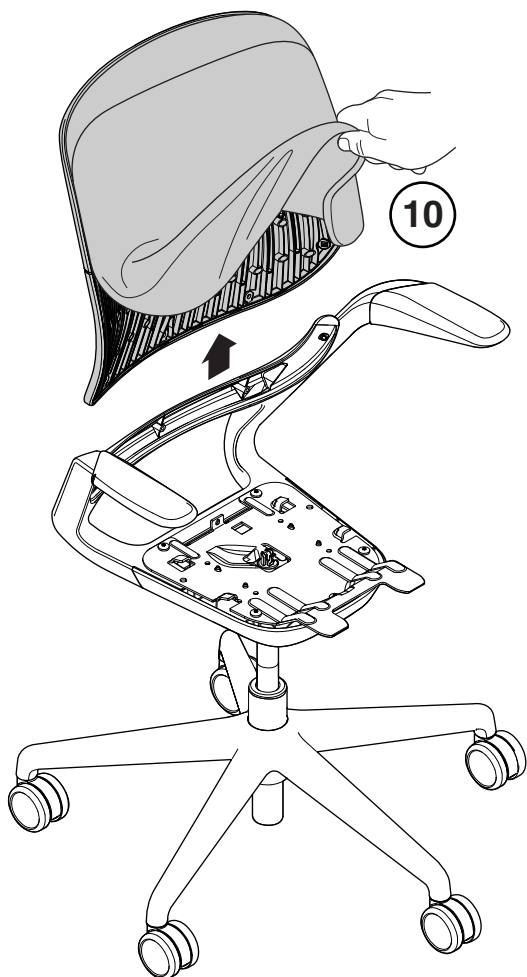
**9.** Remove five (5) M6 x 16mm pan head screws using a T-30 torx bit.





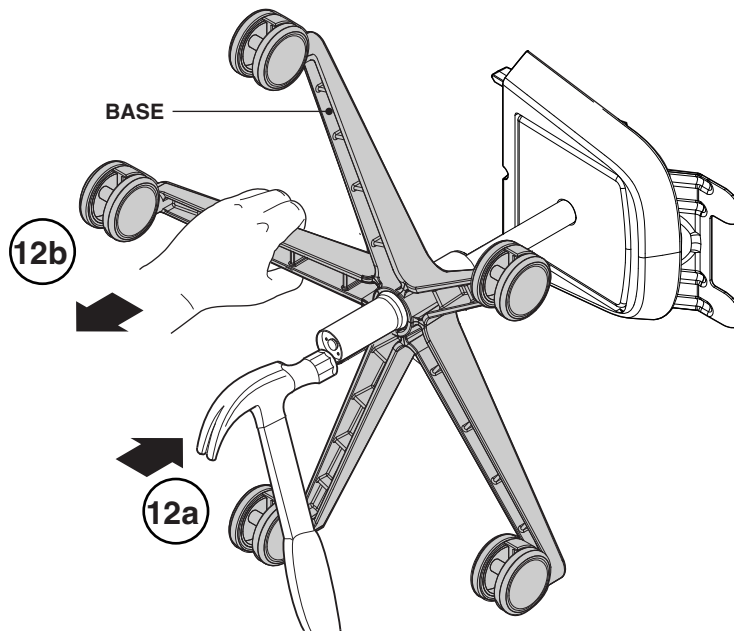
**10.** Remove existing back shell.

**11.** Remove four (4) M8 x 25mm button head screws from the chair control assembly (11a) and remove arm or armless back frame (11b).



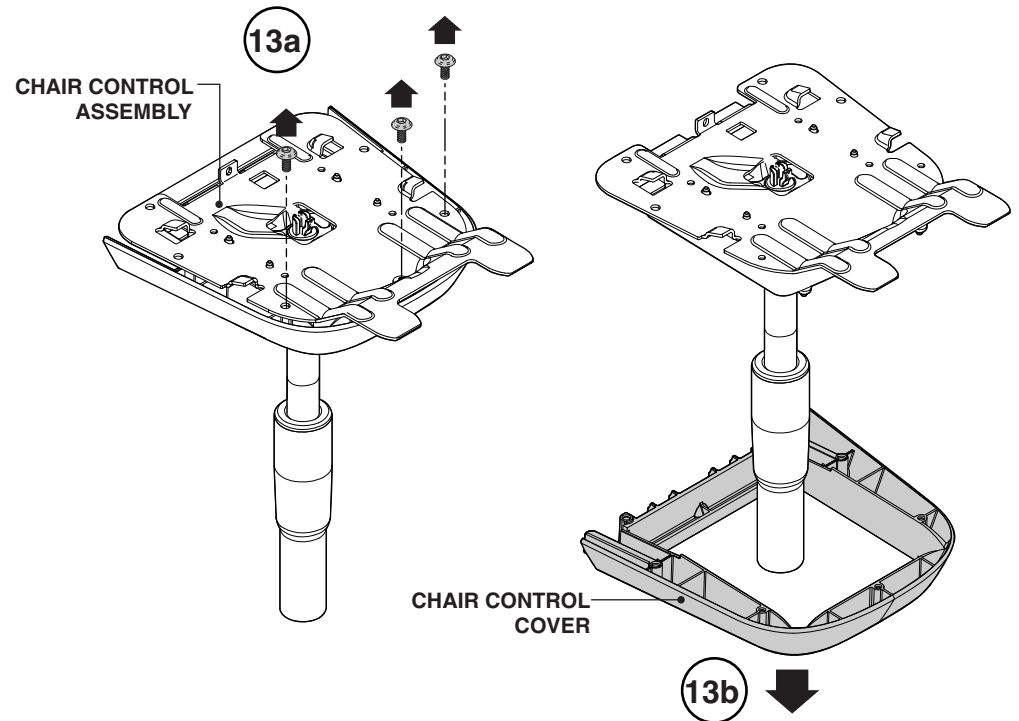
**NOTE:** The chair control cover must also be replaced so that the paint color of the arm or armless back frame and the color of the chair control frame match.

**12.** Remove the chair base by hitting the bottom of the cylinder with a hammer (12a) while pulling forward on the chair base (12b).



**NOTE:** DO NOT hit the inner cylinder rod with the hammer. Hit the outer rim of the cylinder.

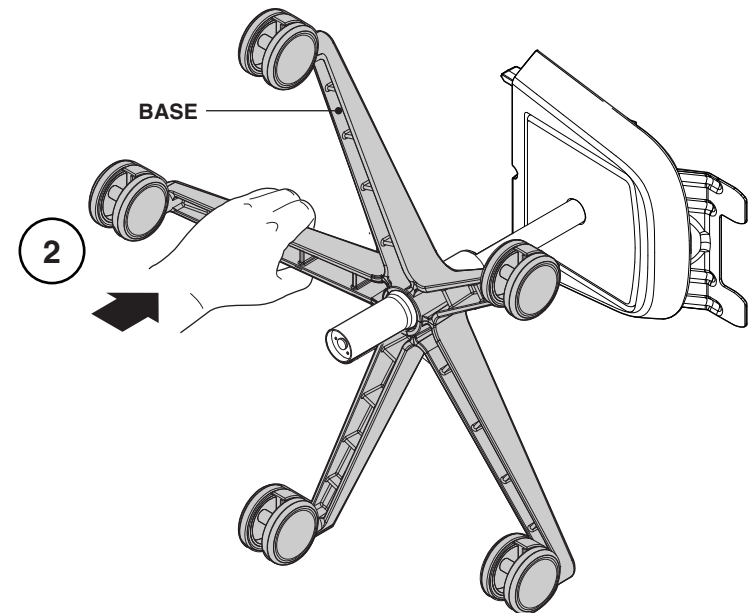
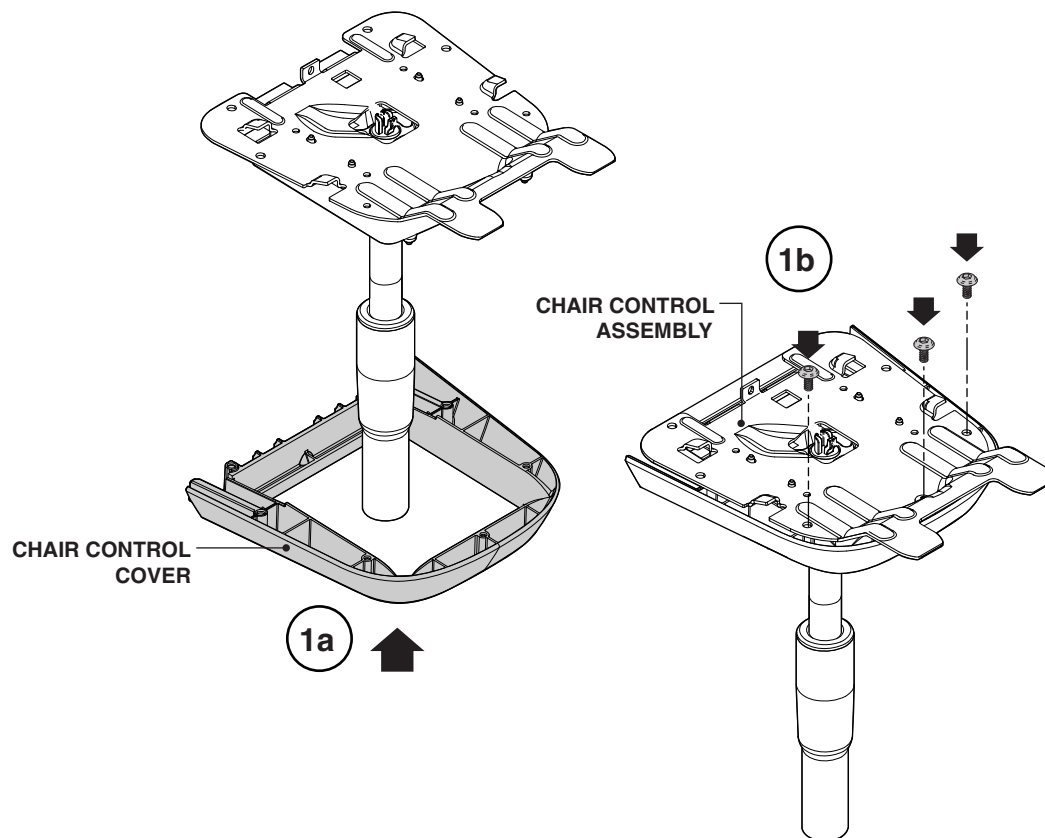
**13.** Remove three (3) M6 x 25mm pan head screws from chair control assembly (13a) and chair control cover from chair control assembly (13b).



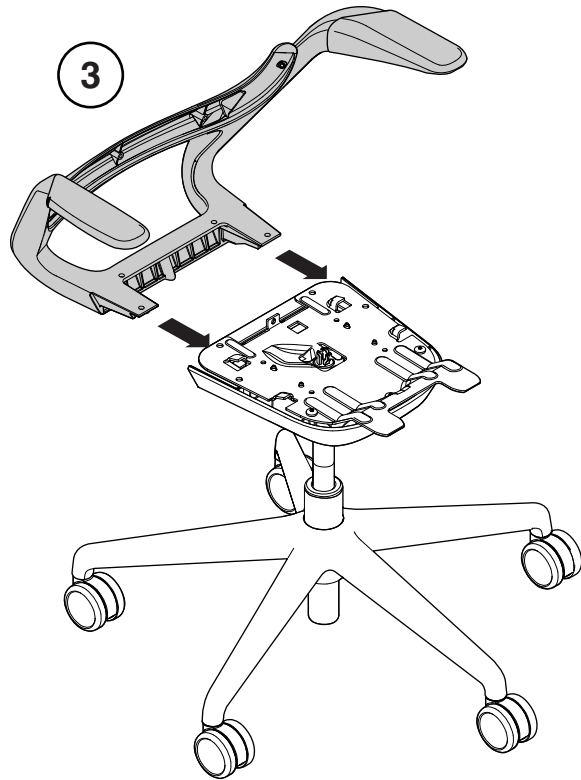
## Installing the Replacement Arm or Armless Back Frame

**1.** Slide chair control cover upward to chair control assembly (1a). Install three (3) M6 x 25mm pan head screws through the chair control assembly and into the chair control cover to a torque of 60-80 in-lbs (1b).

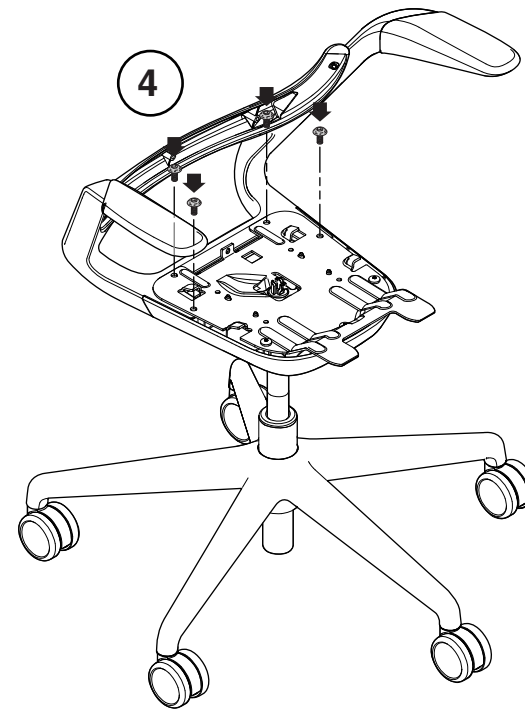
**2.** Place base onto bottom of pneumatic cylinder. Turn chair upright.



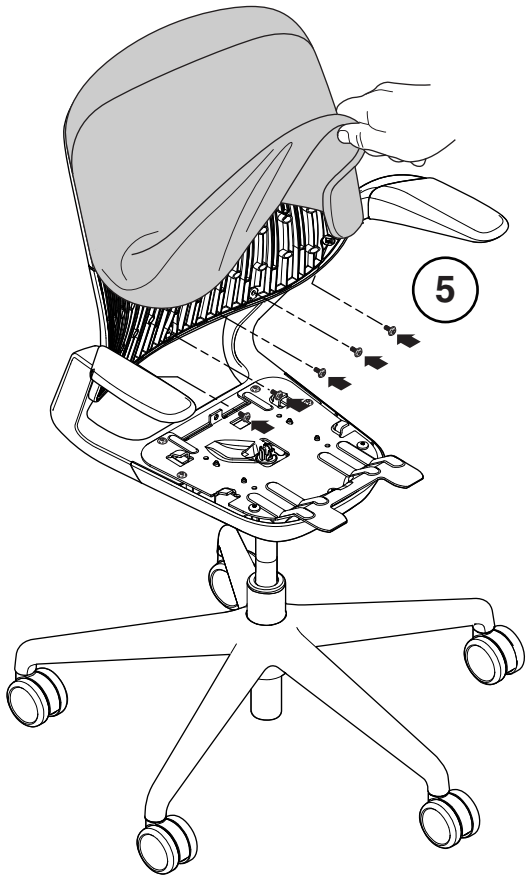
**3.** Align replacement arm or armless back frame with chair control assembly.



**4.** Secure back frame to chair control assembly by installing four (4) M8 x 25mm button head screws as shown to a torque of 80-100 in-lbs.

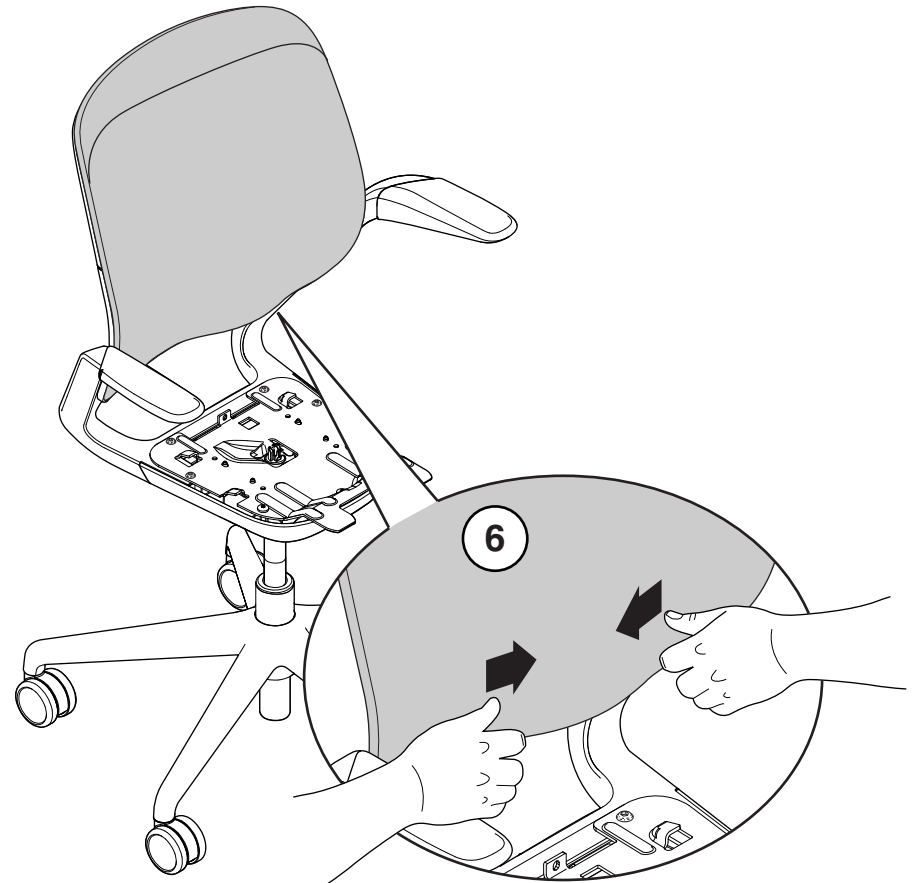


- 5.** Place back into place and secure with five (5) M6 x 16mm pan head screws to a torque of 50-70 in-lbs.



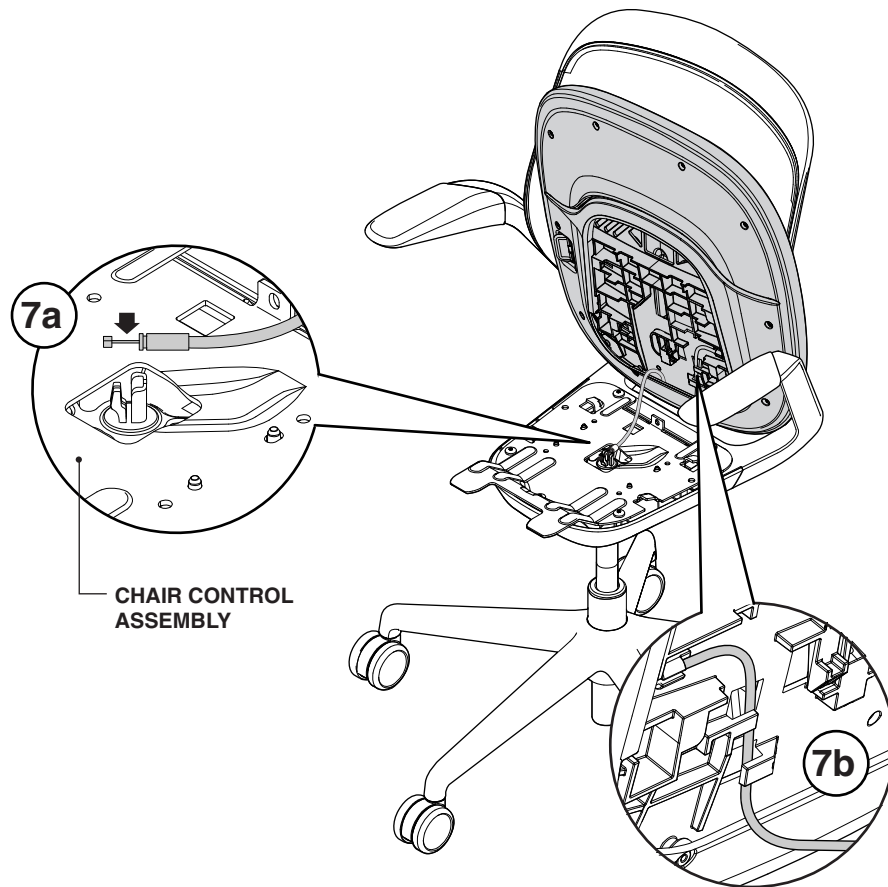
- 6.** Tuck the rest of the fabric into the back shell by working the fabric toward the center of the bottom of the shell.

**NOTE:** There is a groove in the back shell that will accept the edge of the fabric.



- 7.** Place seat assembly upright as shown and lower pneumatic cable into adjustment bracket and snap into place (7a).

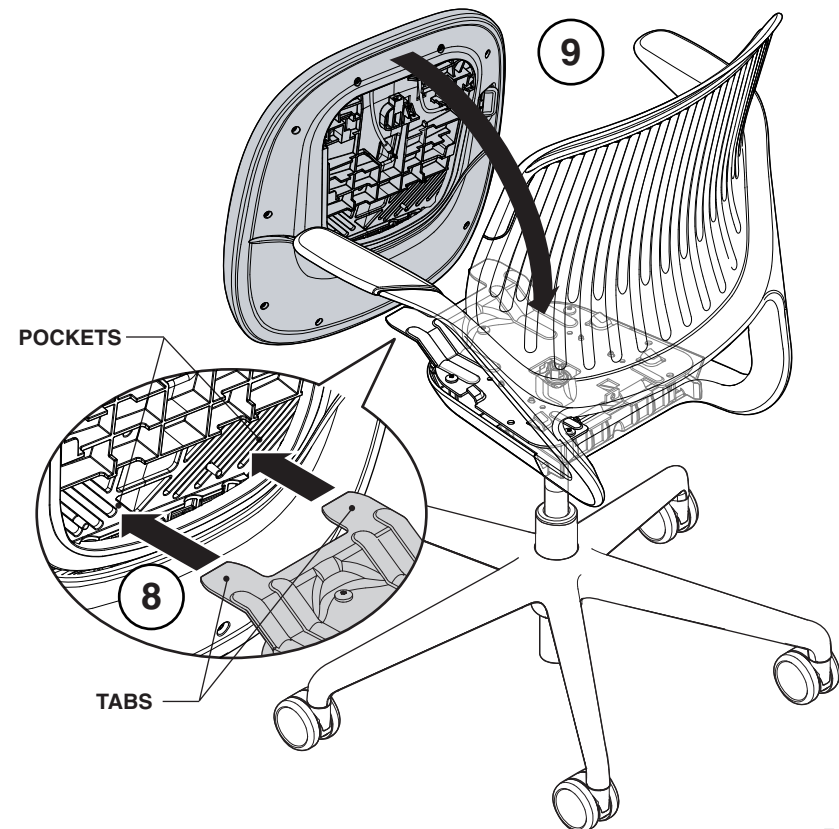
Make sure pneumatic cable is housed into bottom of seat cushion as shown (7b).



- 8.** Align underside of seat assembly with front of chair control assembly. The tabs located on the front of the chair control assembly must fit into the pockets of the seat assembly.

- 9.** Swing seat assembly downward as shown.

**NOTE:** Carefully place the seat over the tabs, making sure not to pull the seat assembly too far forward, as this would damage the pneumatic cable.





**10.** Slide seat assembly as shown using inner legs to push seat cushion inward.

**11.** Place chair onto the floor as shown.

**12.** Squeeze outer seat shell.

**13** While squeezing the outer seat shell, install M6 x 45mm wafer head screw and tighten to 15-30 in-lbs. DO NOT over tighten.  
**IMPORTANT: Make sure to install this screw.**

