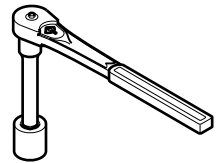
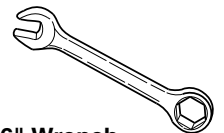


Tools



9/16" Socket



9/16" Wrench

If you have a problem, question, or request, call your local dealer, or Steelcase Line 1 at **888.STEELCASE** (888.783.3522) for immediate action by people who want to help you.

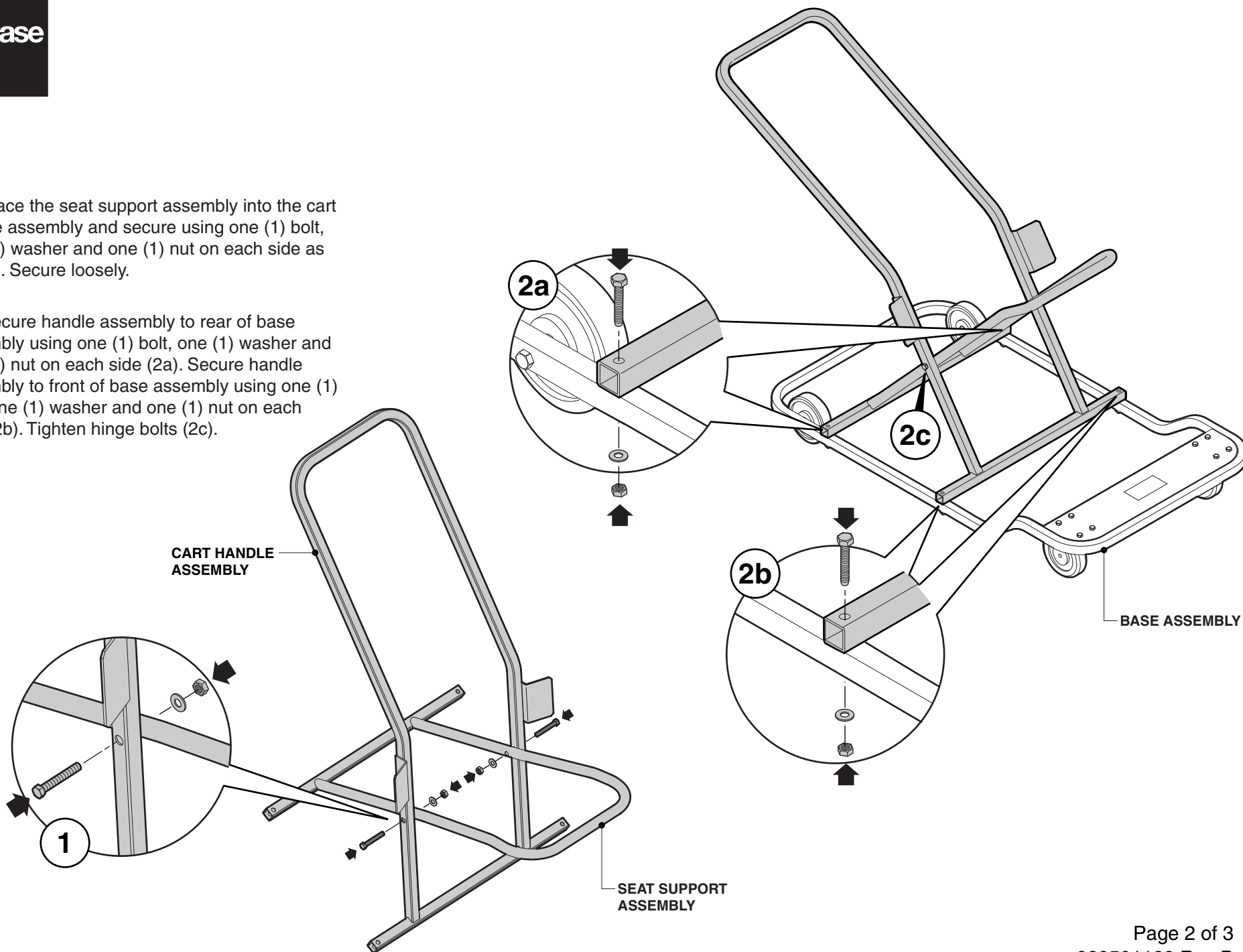
(Outside the U.S.A., Canada, Mexico, Puerto Rico, and the U.S. Virgin Islands, call: 1.616.247.2500)
Or visit our website: www.steelcase.com

© 2007 Steelcase Inc.
Grand Rapids, MI 49501
U.S.A.

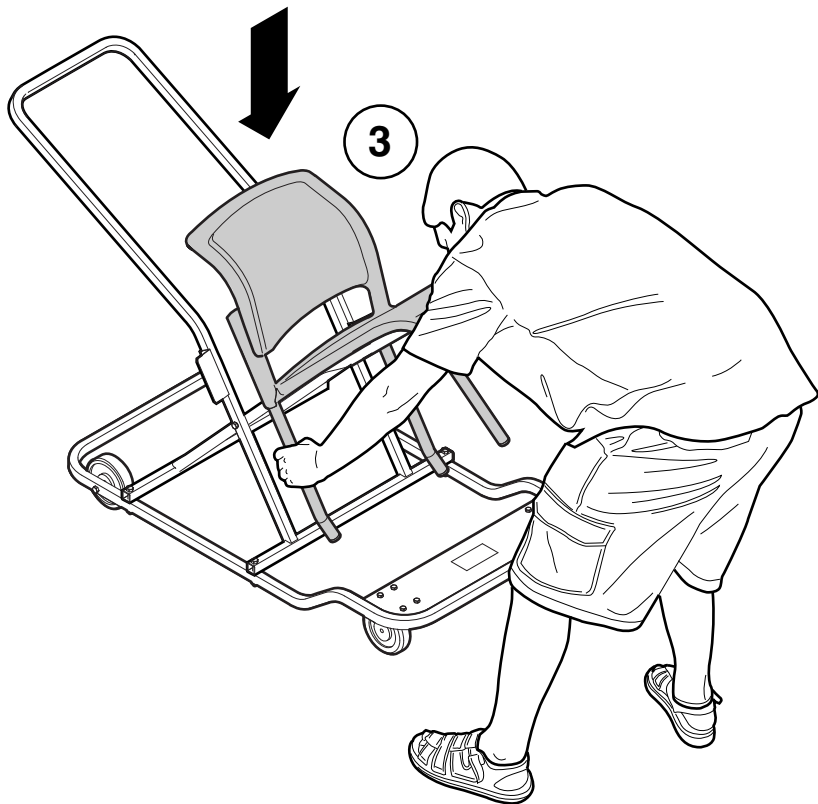
Printed in U.S.A.

1. Place the seat support assembly into the cart handle assembly and secure using one (1) bolt, one (1) washer and one (1) nut on each side as shown. Secure loosely.

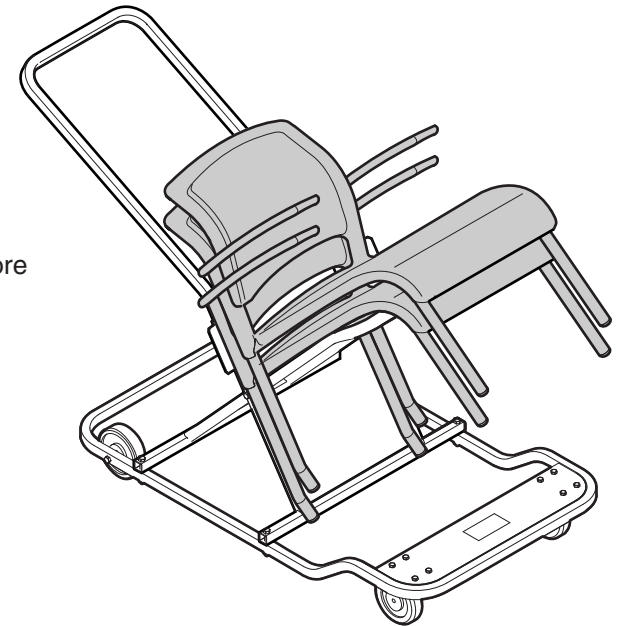
2. Secure handle assembly to rear of base assembly using one (1) bolt, one (1) washer and one (1) nut on each side (2a). Secure handle assembly to front of base assembly using one (1) bolt, one (1) washer and one (1) nut on each side (2b). Tighten hinge bolts (2c).



3. Stack chairs onto dolly.



Stacking orientation for a chair with arms.



To prevent tipping, do not stack more than ten (10) chairs on a dolly.

Stacking orientation for a chair without arms.

