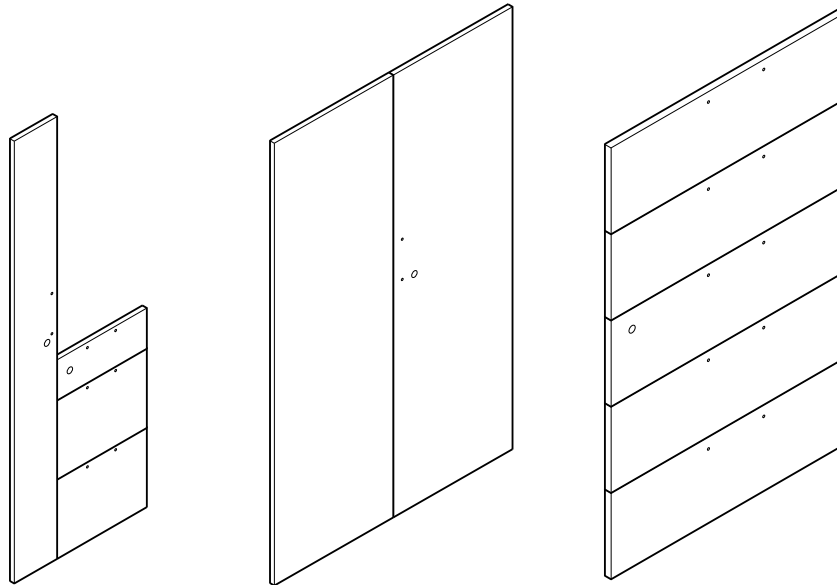


Universal Storage - Wood Door and Drawer Outerhead Replacement



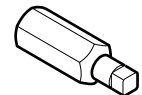
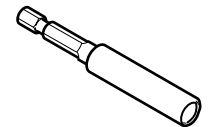
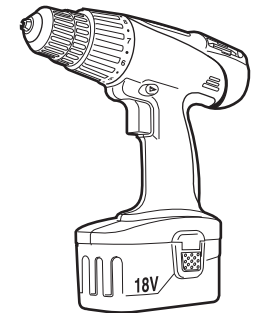
NOTE: In order to match grain pattern, replace all drawer and door fronts on entire cabinet.

If you have a problem, question, or request, call your local dealer, or Steelcase Line 1 at **888.STEELCASE** (888.783.3522) for immediate action by people who want to help you. (Outside the U.S.A., Canada, Mexico, Puerto Rico, and the U.S. Virgin Islands, call: 1.616.247.2500) Or visit our website: www.steelcase.com

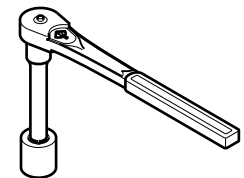
© 2005 Steelcase Inc.
Grand Rapids, MI 49501
U.S.A.
Printed in U.S.A.

Table Of Contents

Page	Topic
2	Removing Hinged Doors from Case
3-4	Lock Removal
5	Re-Installation of Lock System
6	Adjusting Hinges
7-8	Removing the Outer Head from a 12" Drawer



#2 SQ. DRIVE BIT



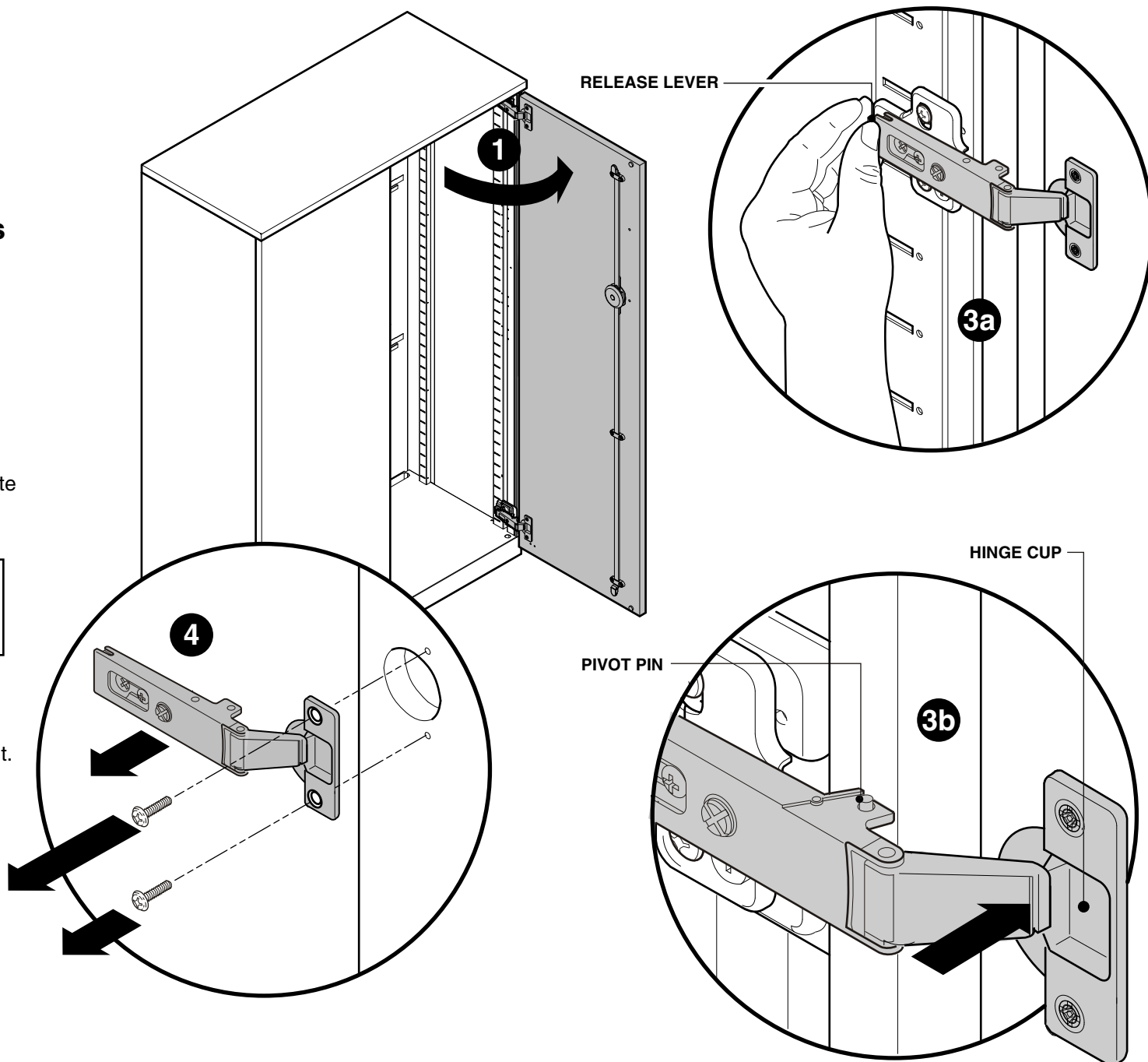
7/8" DEEP SOCKET

Removing Hinged Doors from Case

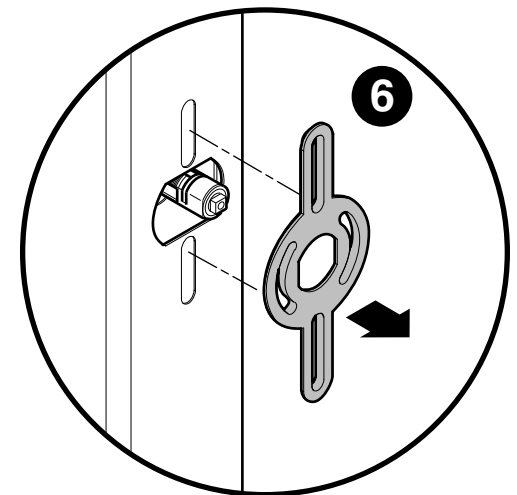
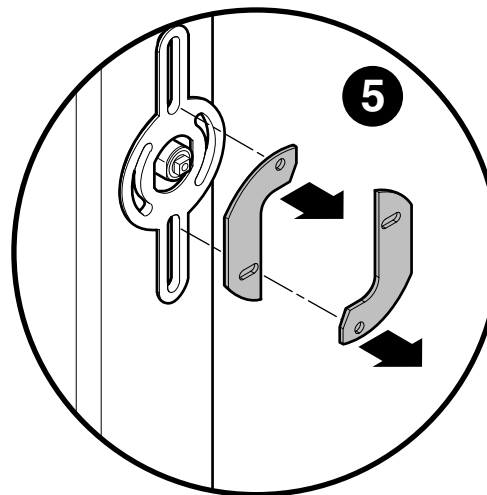
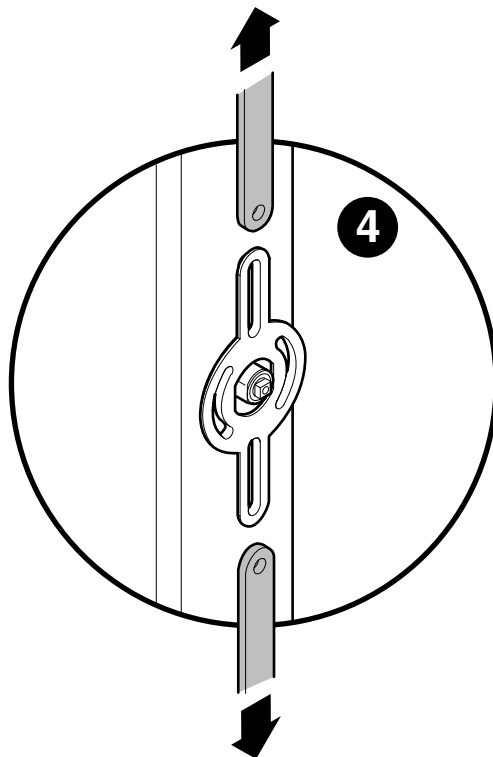
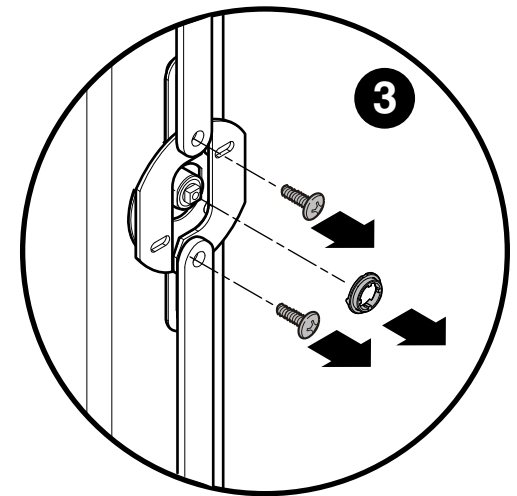
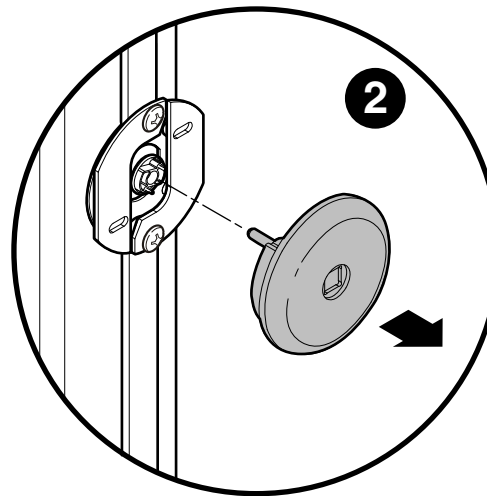
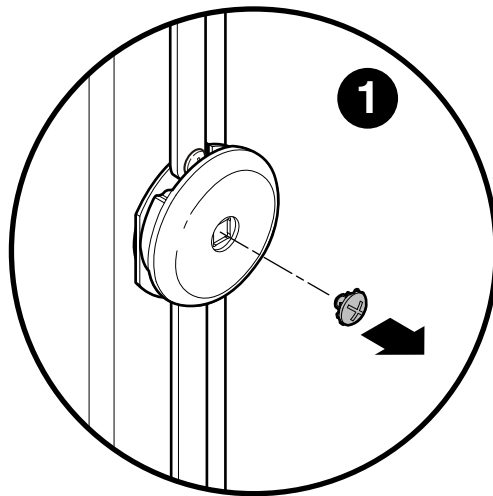
1. Open door.
2. Support door.
3. Detach hinges (start at bottom).
 - a) Hold down the mounting plate release lever.
 - b) Push gently on hinge cup.

Note: If the hinge won't disengage from the mounting plate, adjust the hinge inboard.

4. Remove hinges from door.
5. Remove pull from door if present.



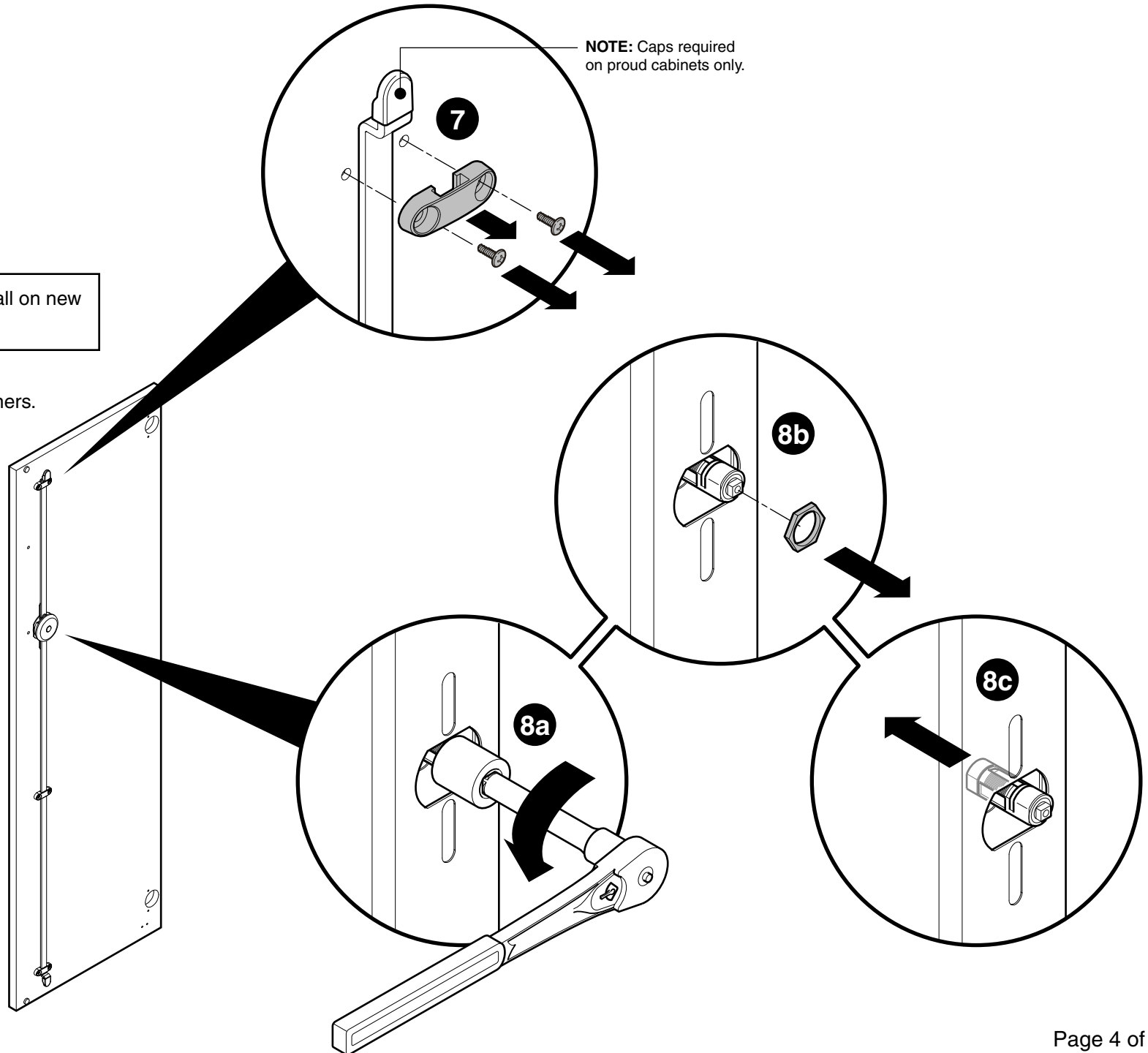
Removal of Lock



Removal of Lock (continued)

Note: Reverse steps to install on new door skin.

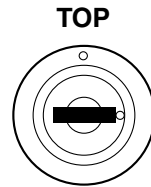
7. Remove all of the retainers.



Re-Installation of Lock System

1. Re-install lock system by reversing steps 1 thru 8 on pages 3 & 4. Make sure the key is in the unlocked position and the lock straps are in position shown on page 3. Align pins of bell cam with slots in activator plate before tightening screw.

2. Check lock function.

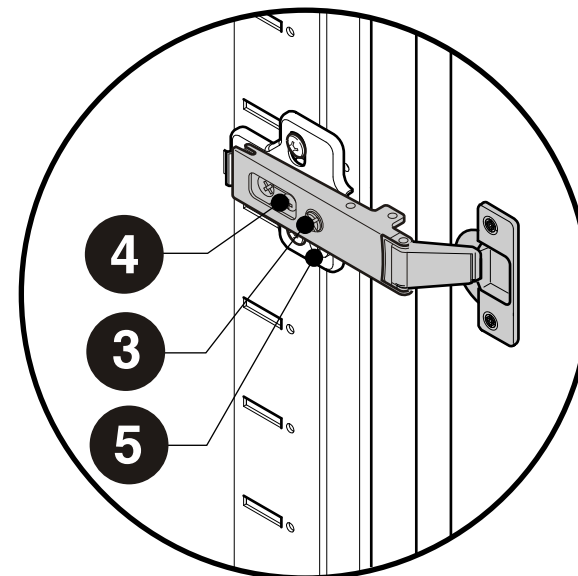
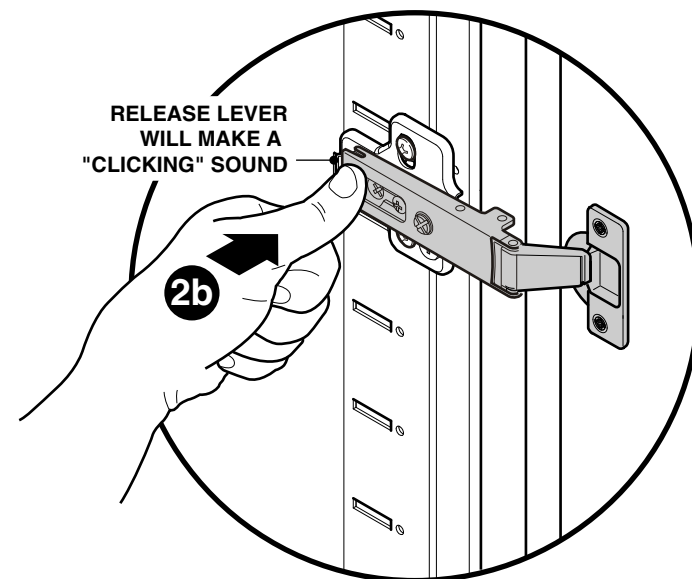
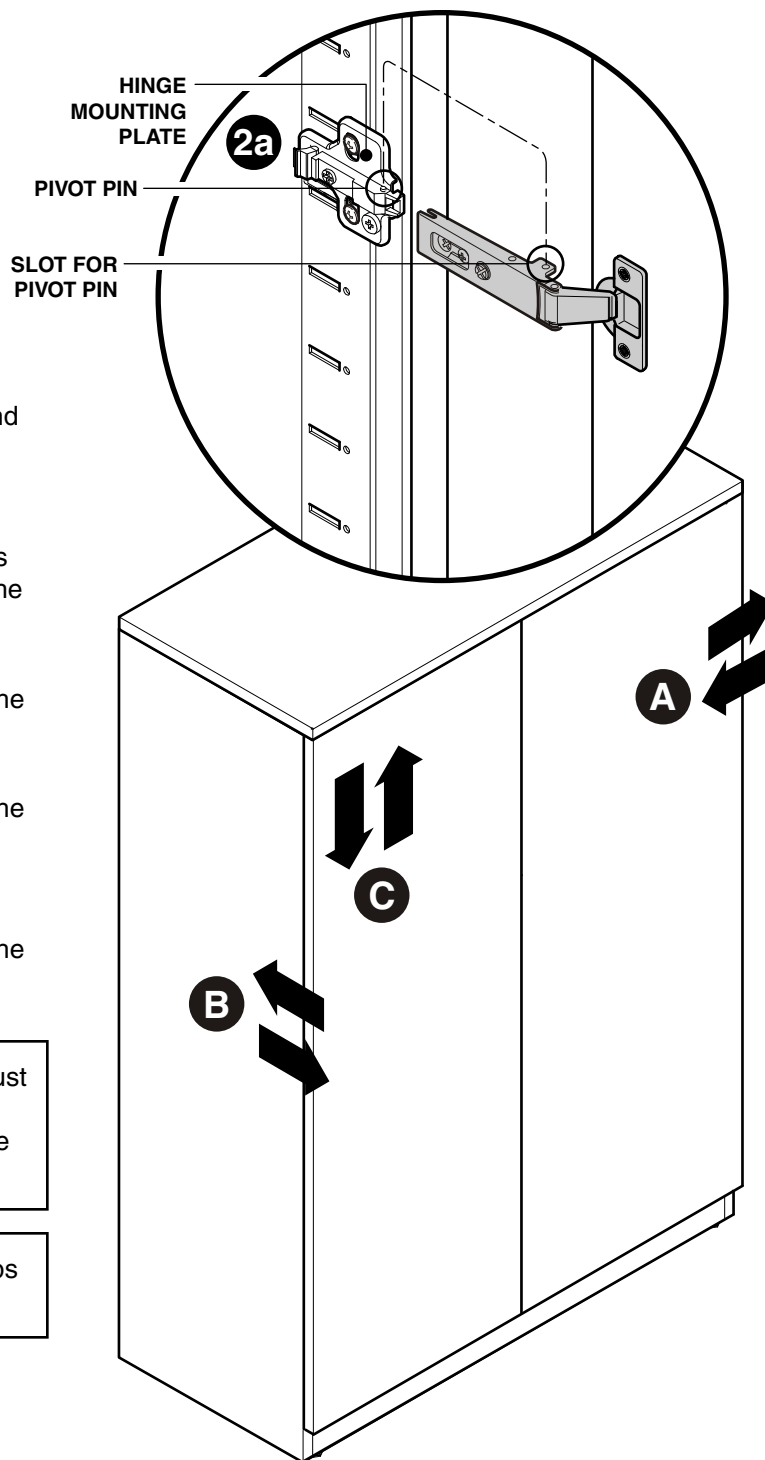


Adjusting the Hinges

1. Replace lock system, hinges and pulls on the new door skin.
2. Engage hinge slot onto the mounting plate pivot pin (2a). Press tail firmly into mounting plate until the release lever clicks (2b).
3. This screw adjusts the door in the HORIZONTAL or "A" direction.
4. This screw adjusts the door in the FRONT TO BACK (depth), or "B" direction.
5. This screw adjusts the door in the VERTICAL or "C" direction.

NOTE: It may be necessary to adjust the vertical position using the adjustment screw on the hinge plate so that all hinges will snap in easily.

NOTE: Adjust the doors so the gaps are consistent and straight.



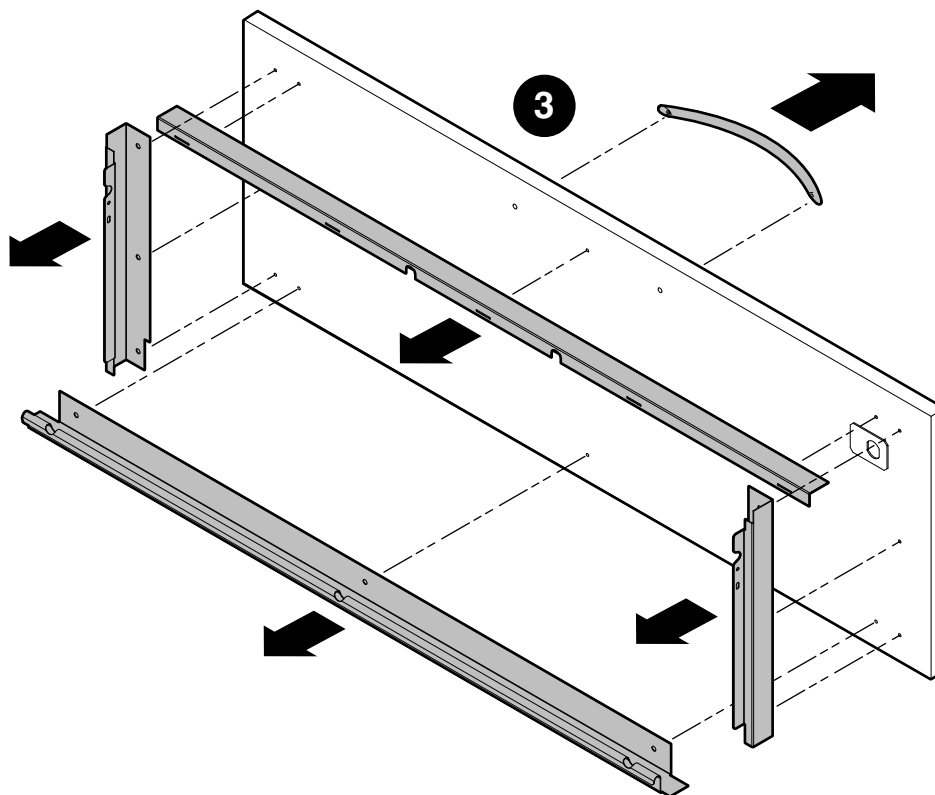
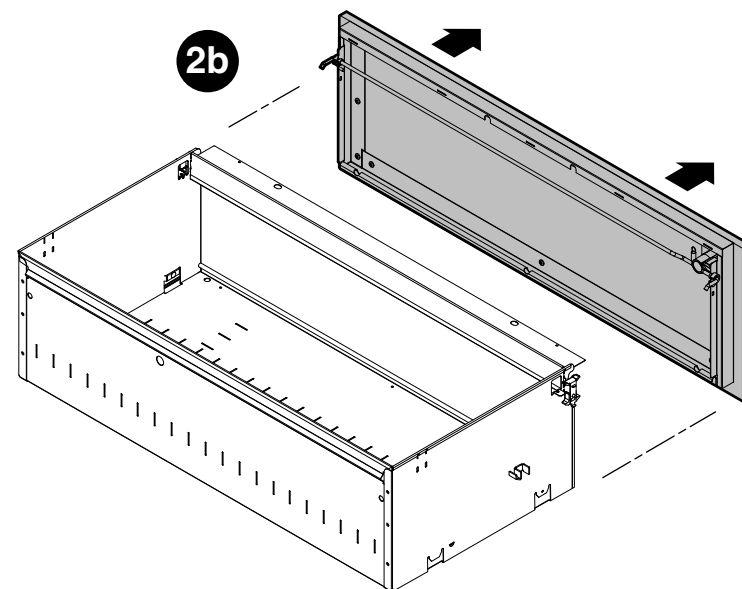
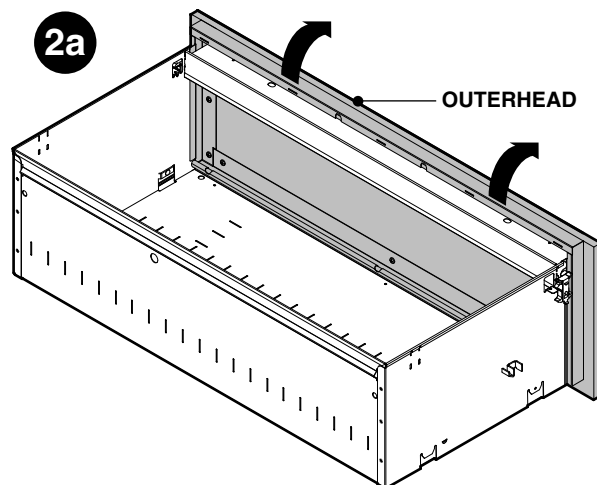
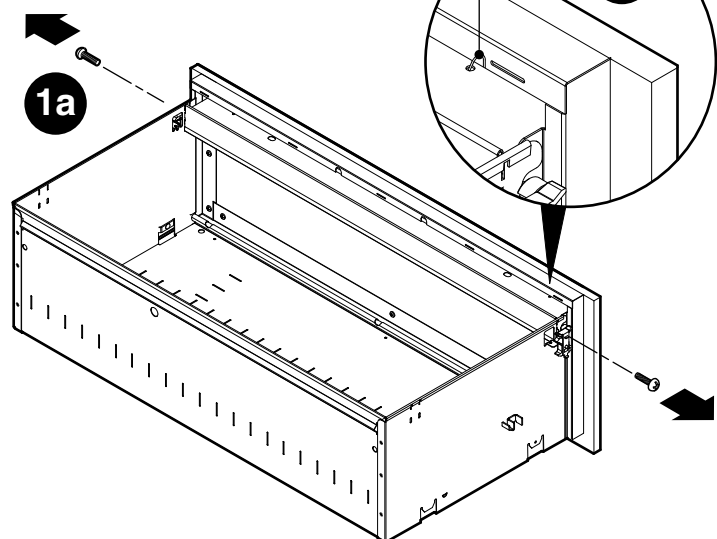
Removing the Outer Head from a 12" Drawer

NOTE: Drawer body does not need to be removed from case.

1. Remove screws on both sides of drawer (1a). If this is a locking overhead, disconnect the spring from the innerhead (1b).

2. Rotate out overhead (2a) and remove (2b).

3. Remove transition pieces and handle from wood front.



4. If locking overhead, disconnect the spring and remove the lock rod.

5. Remove screw from the cam (6a) and remove cam (6b).

6. Using a deep 7/8" socket, remove nut and lock bracket. Then remove lock barrel.

7. Reverse order to re-assemble. Be sure to maintain correct order of bookmatched wood veneer sets.

8. To adjust horizontal gap, switch screw to lower hole and adjust accordingly.

