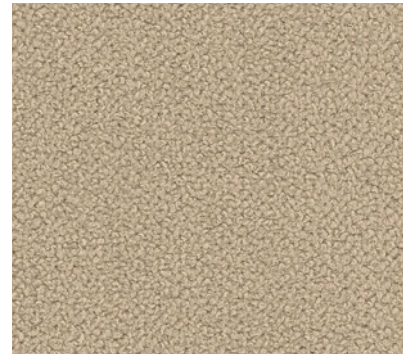
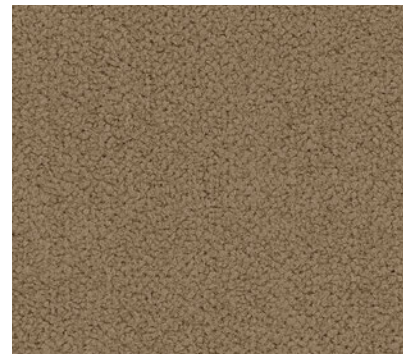


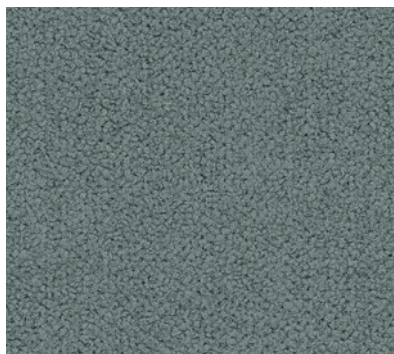
**11705** Kringle



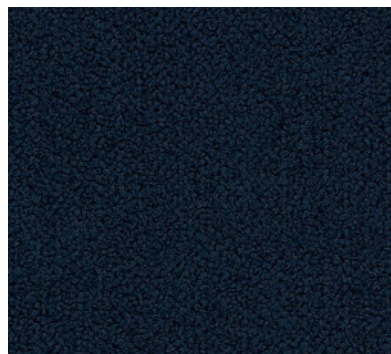
**11702** Down



**11703** Willow



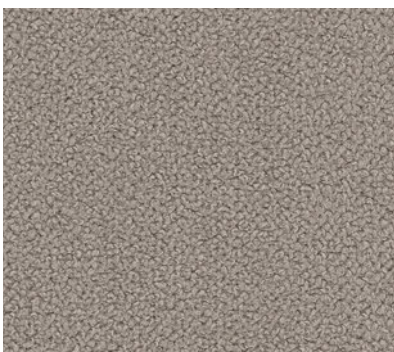
**11708** Snuggle



**11709** Velvet



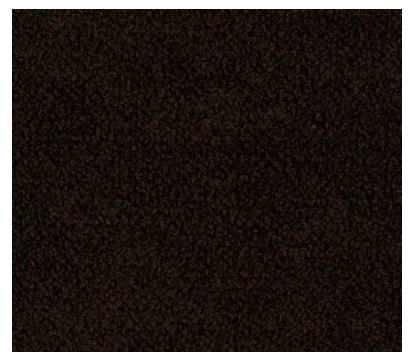
**11701** Moss



**11704** Sable



**11707** Suede



**11706** Fur

# PLUSH

## Seating Upholstery

Grade 1

### SPECIFICATIONS

**Contents** 100% Polyester

**Backing** Polyester

**Finish** Teflon®

**Repeat** None

**Railroad** No

**Width** 54"

**Weight** 17.44 oz./lin. yd.

PERFORMANCE 

**Abrasion** 100,000 Double Rubs, Wyzenbeek (ASTM D4157)

**Light Fastness** Class 4/40 hrs. min. (AATCC 16A)

**Crocking** Class 4 Wet, Class 4 Dry (AATCC 8)

**Physical Properties** Class 4 (ASTM D3511) Brush Pill  
87 lbs. Warp, 106 lbs. Fill (ASTM D5034) Breaking Strength  
18 lbs. Warp, 11 lbs. Fill (ASTM D2262) Tear Strength  
76 lbs. Warp, 92 lbs. Fill (ASTM D4034) Seam Slippage  
210 lbs. Warp, 148 lbs. Fill (ASTM D5034) Tensile Strength

FLAMMABILITY 

**Passes** California Tech. Bulletin 117-2013  
NFPA 260 Class 1  
UFAC Class 1  
Flame Retardants are not added

### CARE

#### Cleanability

W - Water based cleaners may be used.

Please reference price list for product applications.  
Product details and other data are subject to change without notice.

We will always ship a satisfactory commercial color match.  
Due to industry standard dye lot variation, colors may not match exactly.  
Cut yardage and individual memo samples are available.  
Contact National Customer Service for pricing and availability.

# NATIONAL

1610 ROYAL STREET, JASPER, IN, 47549  
TOLL FREE 800.482.1717  
WEB NATIONALOFFICEFURNITURE.COM

A Unit of Kimball International ©2012  
Form No. NSCPLU Ver. 16  
2016