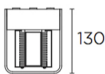
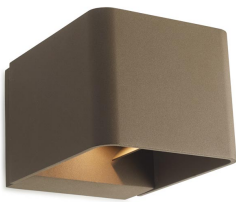


05-9683-J6-CL

V1

WILSON Wall fixture



Description

Wall fixture for indoor and outdoor use.

For uplighting and downlighting. Specially designed to conceal all mounting screws. Structure material: High purity aluminium. Structure finish: Brown. Diffuser material: Glass. Diffuser finish: Matt. UV protection. Warranty: 2 Years.

Finish  
Brown  
Matt

Material  
High purity aluminium  
Glass

IP65 IK08   4

TECHNICAL CHARACTERISTICS

Light source

Light source: LED LEXTAR  
Output (W): 9 W  
Total power consumption (W): 10.2 W  
Color temperature: Warm White - 3000K  
CRI: 80  
Real Lumen: 623  
Nominal Lumen: 855  
Qty Leds: 24  
Lm/Real W: 61  
Life Time: 36.000h L70B30  
Bin / Grup: L3003 o R003  
MacAdam steps: 3 STEPS  
UGR: 16.3  
Photobiological risk: RG0

GEAR

Brand: EAGLERISE  
Gear included: Yes, electronic  
Voltage / Frequency: 100-240V/50-60Hz  
Power Factor: 0.90  
Flickering: 26.7%

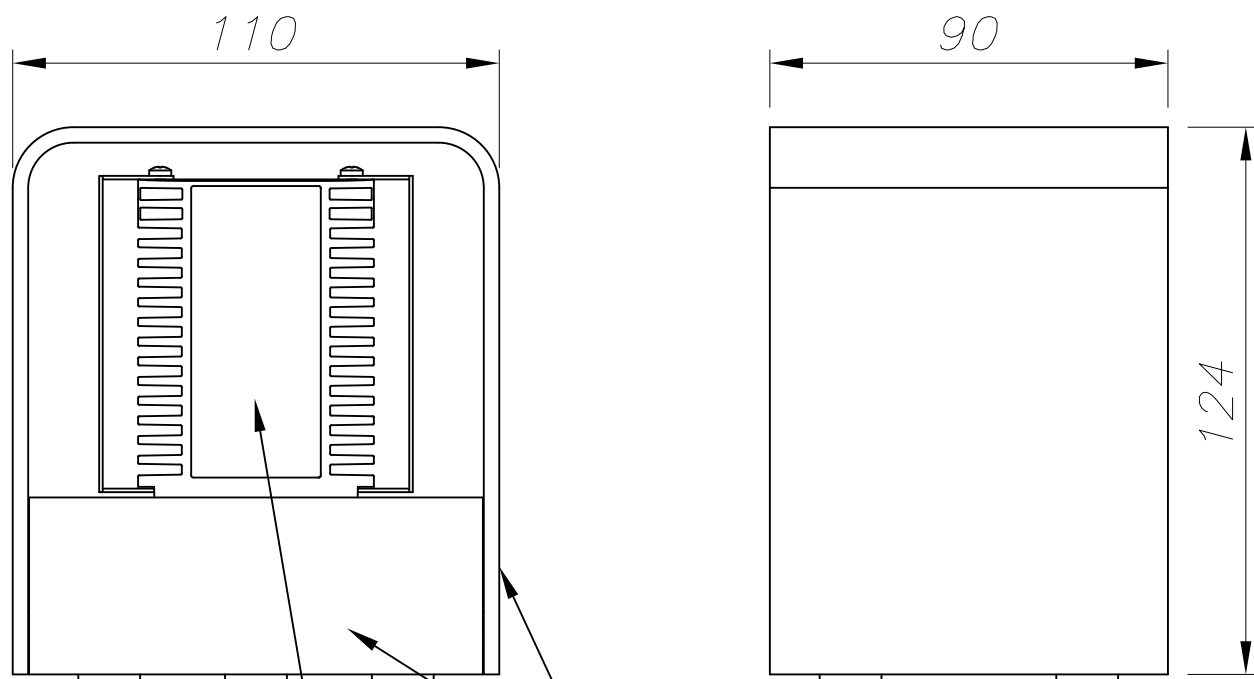
Luminaire

Double cable exit: No  
Drainage: No  
Recessed: No  
Uv Protection: Yes  
Warranty: 2 Years

Logistics

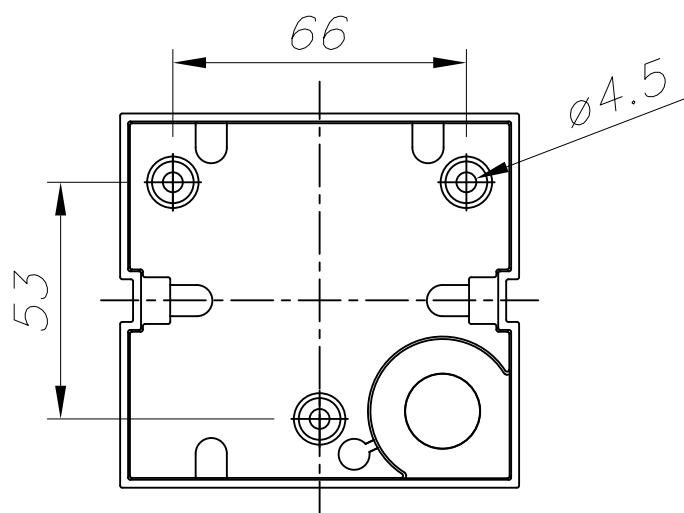
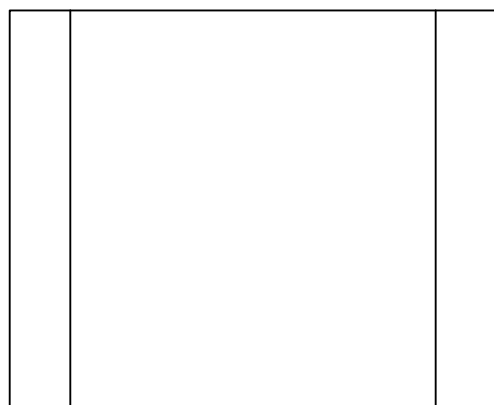
Energy Efficiency: LED A++  
EAN Code: 8435381496821  
Net Weight (Kg): 0.980  
Weight in Kg (packaged): 1.165  
Packing: 125 x 110 x 165  
Masterbox: 4

The photograph may not match the reference exactly. Please read the product description to identify the finish.



CRISTAL ARENADO INTERIOR  
SANDFROSTED GLASS INSIDE

ALUMINIO DE ALTA PUREZA  
HIGH QUALITY ALUMINIUM



PLANTILLA DE INSTALACIÓN  
INSTALLATION TEMPLATE

