



Kitchen sink - Tara Classic
HOT & COLD WATER DISPENSER - polished chrome
Article number: 17 861 888-00

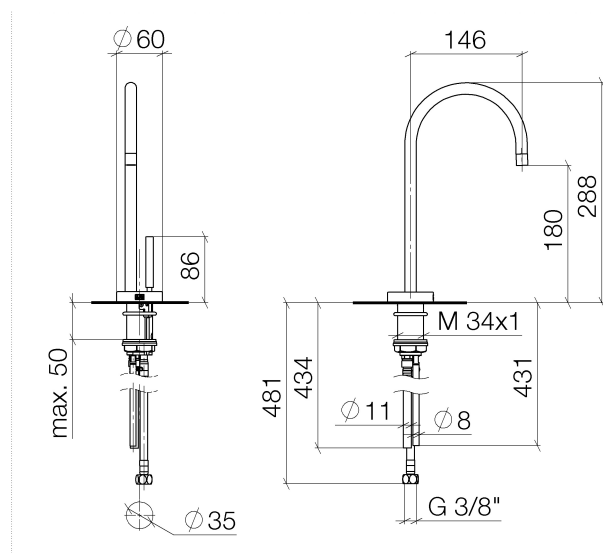


- 5-3/4" Projection
- rigid, thermally insulated outlet
- Laminar stream
- Total height 11-3/8"
- 7-1/8" height to aerator/spout outlet
- 1-3/8" hole diameter
- Provides filtered, hot water, 199°F max. temperature
- Provides filtered, cold water (not chilled)
- Water flow rate limited to max. 0.5 gpm
- control unit for wall assembly (5-3/8" x 6-1/4" x 2-3/8")
- electronic valve
- plug-in power supply, 100-230 V, 50-60 Hz, 18 W, incl. country-specific adaptor set
- lead-free
- One lever for hot and cold water
- Fittings group in compliance with DIN 4109: 1
- (ADA)
- Compatible with Insinkerator® hot water tank HWT-F1000S. Tank and filter not supplied from Dornbracht. More information on tank and filter at www.inksinkerator.com.
- We recommend replacing the filter cartridge every six months. Please see the installation manual for more information.
- Specifications and technical data sheets can be found on www.dornbracht.com/professional.



polished chrome

Dimensional drawing

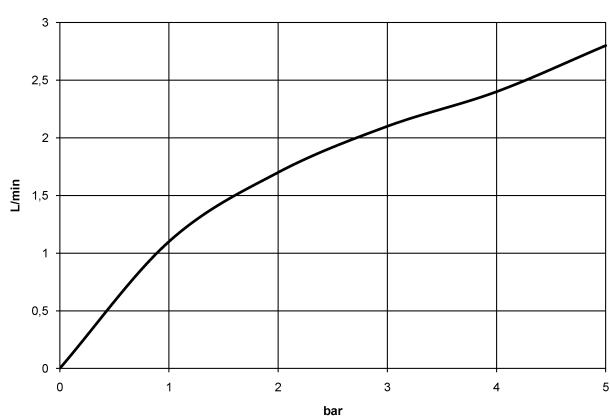




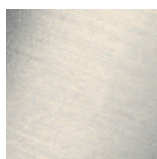
Kitchen sink - Tara Classic
HOT & COLD WATER DISPENSER - polished chrome
Article number: 17 861 888-00

All dimensions in mm / inch = mm x 0,0394

Flow rate chart



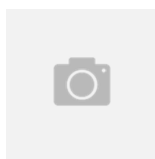
Other surface finishes



platinum matte
17 861 888-06



Cyprum
17 861 888-49



Dark Platinum matte
17 861 888-99

Other surfaces upon request (extra service)