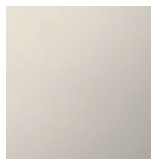




Shower - Madison
Shower mixer for wall-mounted installation - platinum
Article number: 26 101 360-08



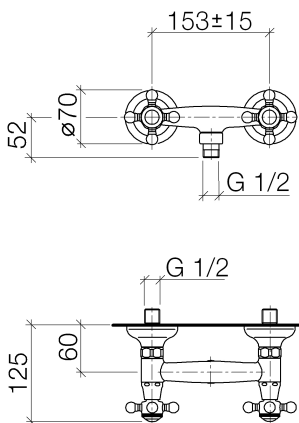
- 1/2" Shower outlet
- Flanges, diameter 2-3/4"
- 1/2" connection
- Center to center 6" ± 5/8"
- Fittings group in compliance with DIN 4109: 1
- NOTE: Local building codes may require the use of an anti-scald device. Please refer to remote pressure balance valve (35 910 970 90)
- Internal backflow preventer.



platinum

Accessory is required for this item.

Dimensional drawing



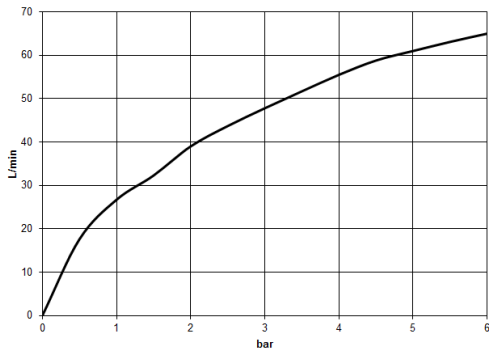
26 101 360-FF

All dimensions in mm / inch = mm x 0,0394



Shower - Madison
Shower mixer for wall-mounted installation - platinum
Article number: 26 101 360-08

Flow rate chart



Other surface finishes



polished chrome
26 101 360-00



platinum matte
26 101 360-06



Durabrass
26 101 360-09

Other surfaces upon request (extra service)

Shower - Madison
 Shower mixer for wall-mounted installation - platinum
 Article number: 26 101 360-08

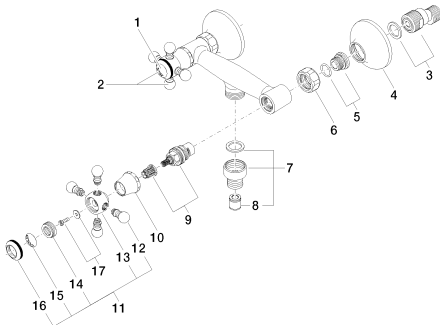
Required article



35 080 970-90 0010

Rough-in adapter -

Exploded drawing



Spare parts list

Number	Item Number	Designation	Number of units
1	09 26 01 011 90	Cover -	1
2	04 20 36 002 07-08	Handle - platinum	1
3	04 11 04 030 00 90	Wall connection -	2
4	09 27 39 010-08	Escutcheon - platinum	2
5	04 29 05 014 00 90	Wall connection -	2
6	09 23 30 010-08	Mounting bracket - platinum	2
7	04 24 03 003 00-08	Nipple - platinum	1
8	09 23 01 040 90	Application -	1
9	90 90 03 131 00 90	Ceramic cartridge clockwise-closing -	2
10	09 21 02 055-08	Hood / sleeve - platinum	2
11	04 20 36 002 06-08	Handle - platinum	1
12	09 20 36 004-08	Handle - platinum	8
13	09 20 36 002-08	Handle - platinum	2
14	09 20 83 006 90	Handle -	2
15	09 26 01 010 90	Cover -	1
16	09 20 36 005-08	Handle - platinum	2
17	04 30 30 029 00 90	Mounting bracket -	2