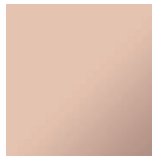


Shower - Performing Shower

Hand shower set with individual flanges - Cyprum

Article number: 27 803 892-49 0010

- 3 individual sprays (standard, soft, massage) + 2 combinations (standard+soft, soft+massage)
- Descaling system
- 1/2" Shower outlet
- Wall elbow with flange Ø 2-1/8"
- Wall bracket with flange Ø 2-1/8"
- Metal shower hose 49-1/4" with anti-twist device
- 1/2" wall elbow
- Water flow rate limited to max. 1.8 gpm
- Internal backflow preventer.



Cyprum

