

**Bathtub - MEM**  
**Two-way diverter - platinum**  
 Article number: 29 125 980-08

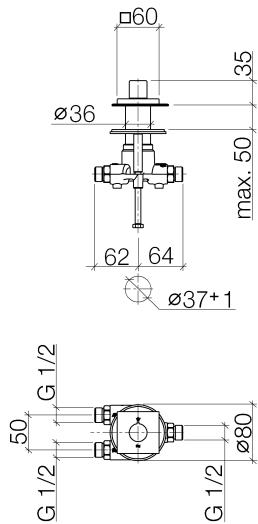


- Manual diverter
- 1-1/2" hole diameter
- Flange 2-3/8" x 2-3/8"
- 1/2" connection
- Water flow rate limited to max. 6.2 gpm
- With label
- Fittings group in compliance with DIN 4109: 2



platinum

**Dimensional drawing**



29 125 980-FF

All dimensions in mm / inch = mm x 0,0394

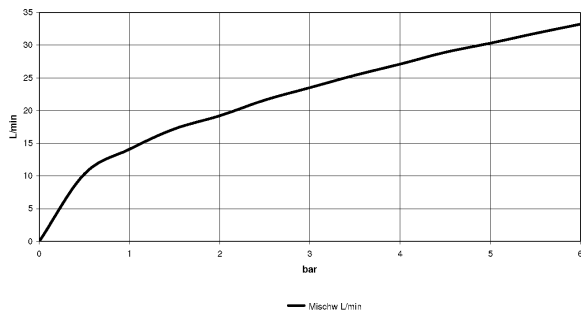


Bathtub - MEM

Two-way diverter - platinum

Article number: 29 125 980-08

### Flow rate chart



### Other surface finishes



polished chrome  
29 125 980-00



platinum matte  
29 125 980-06



Cyprum  
29 125 980-49

Other surfaces upon request (extra service)



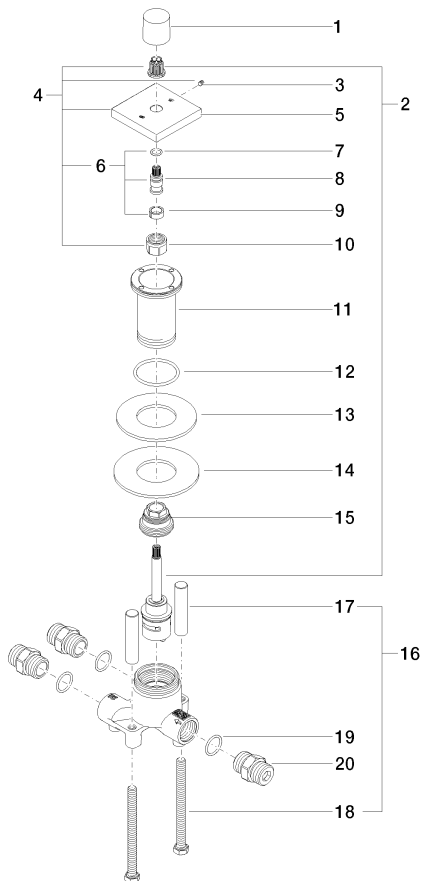
Bathtub - MEM  
 Two-way diverter - platinum  
 Article number: 29 125 980-08

Recommended article



12 509 970-90 0010  
 Hose set -

Exploded drawing



Spare parts list

Number	Item Number	Designation	Number of units
1	09 20 98 001-08	handle	1
2	90 90 03 211 00 90	Conversion -	1
3	04 27 98 021 00-08	rosette	1
4	04 31 11 112 00 90	Mounting bracket -	1
5	09 30 01 105 90	Wall connection -	1
6	09 14 10 143 90	Washer -	1
7	09 14 05 059 90	Washer -	1
8	09 30 11 136 90	Washer -	1
9	09 24 04 223 90	Mounting bracket -	1
10	04 30 30 153 00 90	Mounting bracket -	1
11	09 18 40 114 90	Hood / sleeve -	2
12	09 30 30 153 90	Mounting bracket -	2
13	09 14 10 010 90	Washer -	3
14	09 24 03 168 10 90	Nipple -	3
15	09 11 03 009 90	Wall connection -	1
16	12 501 970 90	Flexible supply line 1/2" x 1/2" x 11-3/4" -	1
17	09 17 11 051 90	Wall connection -	1