



## Sink - MEM

Wall-mounted three-hole lavatory mixer without drain - platinum

Article number: 36 712 782-08 0010



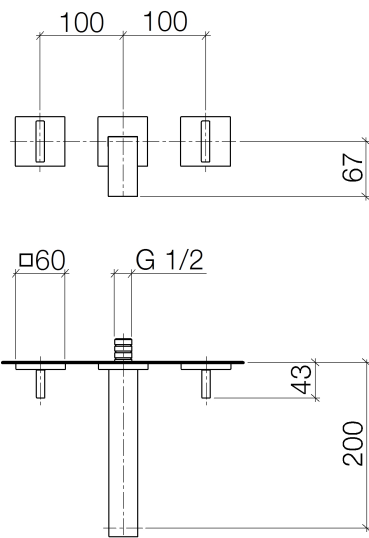
- 7-7/8" Projection
- Fixed spout
- Rectangular aerated stream
- Valve hole diameter 1-5/8"
- Spout hole diameter 1-5/8"
- Individual flanges 2-3/8" x 2-3/8"
- Water flow rate limited to max. 1.2 gpm
- lead-free
- (ADA)



platinum

Accessory is required for this item.

## Dimensional drawing



All dimensions in mm / inch = mm x 0,0394

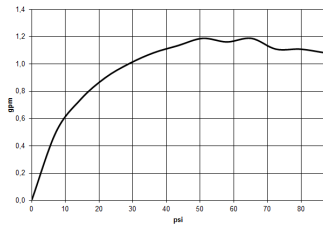


## Sink - MEM

Wall-mounted three-hole lavatory mixer without drain - platinum

Article number: 36 712 782-08 0010

### Flow rate chart



### Other surface finishes



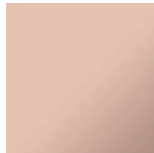
polished chrome

36 712 782-00 0010



platinum matte

36 712 782-06 0010



Cyprum

36 712 782-49 0010

Other surfaces upon request (extra service)

**Sink - MEM**

Wall-mounted three-hole lavatory mixer without drain - platinum

Article number: 36 712 782-08 0010

**Required article**



35 707 970-90 0010

Rough for wall-mounted faucet spout in center -



35 712 970-90 0010

Rough for wall-mounted faucet flexible positioning -



35 713 970-90 0010

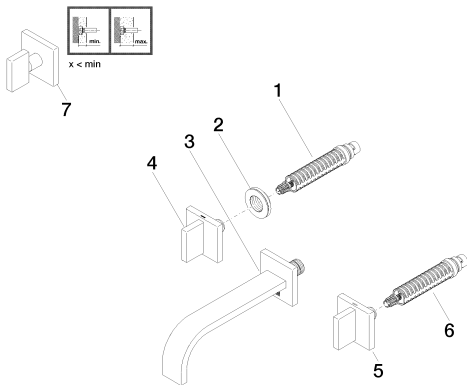
Rough for wall-mounted faucet spout on left -



35 714 970-90 0010

Rough for wall-mounted faucet spout on right -

**Exploded drawing**



**Spare parts list**

Number	Item Number	Designation	Number of units
1	90 90 03 156 00 90	Ceramic cartridge counter-clockwise closing -	1
2	09 21 02 108 90	Hood / sleeve -	2
3	13 800 782-08 0010	Lavatory spout, wall-mounted without drain - platinum	1
4	90 20 78 002 07-08	Handle - platinum	1
5	90 20 78 002 06-08	Handle - platinum	1
6	90 90 03 157 00 90	Ceramic cartridge clockwise-closing -	1
7	04 20 78 002 01-08	Handle - platinum	2