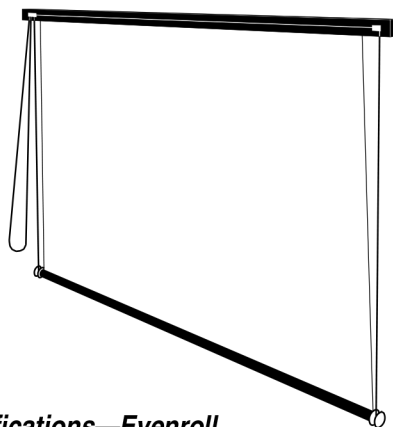


Evenroll

Rope & Pulley Manual Projection Screen

DRAPER



Specifications—Evenroll

Projection screens, rope and pulley style, size _____ h. x _____ w.,

wall or ceiling mounting. Maximum size 24' x 24'

Viewing surface to be flame and mildew resistant. Matt White XT1000E and Contrast Grey XH800E viewing surfaces are certified to GREENGUARD standards for low chemical emissions into indoor air during product usage. For more information, visit ul.com/gg. Fabric shall be hemmed around hard maple slat, which shall fasten to a 2" x 4" rigid wood supporting batten (20' width and wider—2" x 6" batten) with 1½" wood screws on 18" centers. Batten shall be furnished with heavy steel eye bolts on approximate 4' centers for hanging. Fabric shall be cemented to heavy wall aluminum roller, minimum 3" diameter, with flanged spools on each end to prevent operating cords from mistracking. Cords shall operate through nylon marine pulleys enclosed in steel sheaves attached to batten. Cable clamp shall be provided to stop screen at desired level. Right hand control standard. Left hand control available.

Supplier shall furnish sufficient length of cord, and extra pulleys and cleats for operation of screen from wall line if desired.

Specifications subject to change without notice.

Please Mark Appropriate Selections

Select Viewing Surface

- ☐ **Matt White XT1000E (1.0 gain):** GREENGUARD Children and Schools Certified
- ☐ Other: _____

Optional Accessories

- ☐ **Extra Drop** (Total screen height cannot exceed 30')
Select **White** or **Black** _____
Length of **total drop** required _____
- ☐ **2" Black Masking Borders**
- ☐ **Extra Cord***
- ☐ **Extra Double Wheel Pulley for wall***
- ☐ **Cord Cleat on Wall Plate***
- ☐ **Wall Mounting Brackets** (¼" strap steel)—Extend screen 12" from wall.
How Many Brackets (see below)? _____
10'-14' screen width - 2 brackets required
16'-18' screen width - 3 brackets required
20'-30' screen width - 4 brackets required

Control Options

- ☐ **Right Hand Control** (standard)
- ☐ **Left Hand Control**

***Please Note:** If screen installs in center of stage and operating cords are to extend to wall, be sure to indicate distance from edge of screen to wall, and request extra cord, double wheel pulley, and cord cleat on wall plate.

DRAPER

411 S. Pearl St., Spiceland, IN 47385 USA ■ 765-987-7999
www.draperinc.com ■ fax 765-987-7142

Copyright © 2016 Draper Inc.

Form EvenRoll_Sub16

Printed in U.S.A.

Dimensions & Data

Diagonal	Image Area	Batten/ Roller Width	Ship Wt. (lbs.)	Qty.
4:3 NTSC Video Format				
17'6"	126" x 168"	15'6"	70	
20'	144" x 192"	17'6"	80	
22'6"	162" x 216"	19'6"	110	
25'	180" x 240"	21'6"	230	
30'	216" x 288"	25'6"	300	

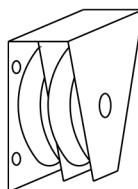
Diagonal	Image Area	Batten/ Roller Width	Ship Wt. (lbs.)	Qty.
16:9 HDTV Format				
16' 4"	96" x 168"	15'6"	70	
18' 4"	108" x 192"	17'6"	80	
21' 5"	126" x 216"	19'6"	100	
22' 11"	135" x 240"	21'6"	110	
27' 6"	162" x 288"	25'6"	280	

Size H x W	Image Area	Batten/ Roller Width	Ship Wt. (lbs.)	Qty.
2.35:1 CinemaScope Format				
15'4"	72" x 168"	15'6"	70	
17'6"	82" x 192"	17'6"	80	
19'7"	92" x 216"	19'6"	90	
21'8"	102" x 240"	21'6"	100	
26'2"	123" x 288"	25'6"	250	

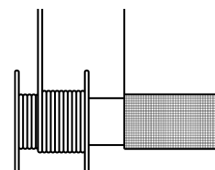
Size H x W	Batten/ Roller Width	Ship Wt. (lbs.)	Qty.
AV Format			
14' x 14'	15'6"	80	
16' x 16'	17'6"	110	
18' x 18'	19'6"	230	
20' x 20'	21'6"	280	
24' x 24'	25'6"	425	

Note: Batten and roller are 18" wider than viewing surface (9" on each side).
Screen Depth (front to back)—6"
Maximum Screen Height (closed)—14"
For sizes not listed above, contact Draper, Inc. for quote.

Nylon Marine Pulley



Flanged Aluminum Spool



PROJECT: _____

ARCHITECT: _____

CONTRACTOR: _____

SUPPLIER: _____

DATE: _____ REVISED: _____