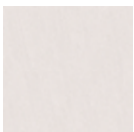


ARIZONA TILE

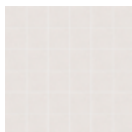
BASALTINA SERIES



Basaltina Mid Grey



Basaltina Ivory



Basaltina Ivory Mosaic



Basaltina Ivory Stack



Basaltina Mid Grey



Basaltina Mid Grey Mosaic



Basaltina Mid Grey Stack



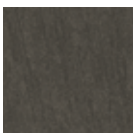
Basaltina Mocha



Basaltina Mocha Mosaic



Basaltina Mocha Stack



Basaltina Nero



Basaltina Nero Mosaic



Basaltina Nero Stack

PRODUCT TYPE

Rectified Color Body Porcelain

COLORS

Basaltina Ivory
 Basaltina Mid Grey
 Basaltina Mocha
 Basaltina Nero

FINISHES

Matte
 Semi-Polished

STOCKED SIZES

12" × 24" × 10mm Rectified
 24" × 24" × 10mm Rectified
 *11-1/2" × 23-5/8" Stack
 *2" × 2" Mosaic
 *matte finish only

STOCKED TRIM

3" × 12" SBN
 *6" × 12" Cove Base
 *1" × 6" Cove In
 *1" × 6" Cove Out

RECOMMENDED USES

Commercial
 Residential
 Interior Floor
 ***Exterior Floor
 Countertops
 Interior Wall
 Exterior Cladding
 Fireplaces
 Showers
 **Shower Floors
 Steam Showers
 Pool & Spa (waterline)

**2 × 2 Mosaic only

C.O.F. DRY: 0.68 (matte)

C.O.F. WET: 0.66 (matte)

DYNAMIC C.O.F. WET: 0.57 (matte)

DYNAMIC C.O.F. WET: 0.45 (semi-polished)

P.E.I. RATING: 5

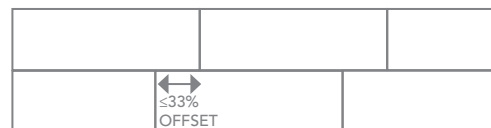
FROSTPROOF: Yes

***DCOF Rating is a measurement of a tiles frictional resistance. It is the specifier's responsibility to ensure the chosen tile is appropriate for each interior and exterior application.

Basaltina is a rectified color body porcelain. It provides a clean, modern look to any environment. It is available in two sizes and two finishes, plus a stack and numerous trim pieces. Because this material is a porcelain product, minimal maintenance is required. When mixing sizes within a series, shade, texture and calibration differences should be expected. This series is suitable for residential and commercial applications.

For proper bonding, LHT/LFT mortar for large format and heavy tiles should be used when installing tiles with a dimensional length greater than 15", and rectangular shape and plank tile, per industry standards. Proper thinset coverage is also necessary, and in some cases, back buttering of tile may be required.

When installing rectangular or square tiles 15 inches or longer with a staggered joint, it is recommended that the offset should not exceed 33%, unless otherwise specified by the manufacturer.



SIZE	SF/PIECE	PIECES/BOX	SF/BOX	BOXES/PALLET	SF/PALLET
12" × 24" × 10mm	1.9368	8	15.4944	40	619.776
24" × 24" × 10mm	3.8736	4	15.4944	36	557.7984
2" × 2" Mosaic	0.9385	13 sheets/box	12.2005	54 boxes/pallet	702 sheets
*11-1/2" × 23-5/8" Stack	1.89	8 pieces/box	15.12	33 boxes/pallet	498.96

Standard packaging quantities are noted above, but variances may occur.

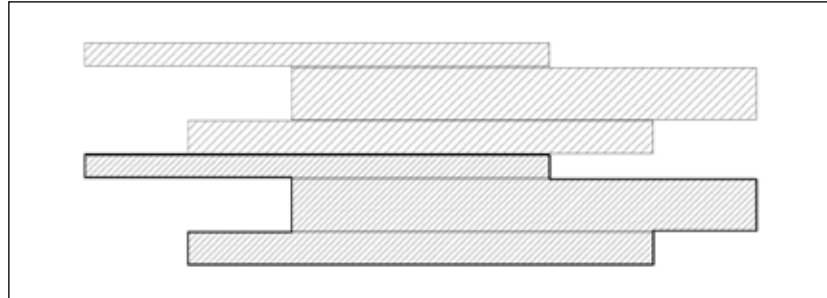
Please view actual material when making your selection, as the images on this page are only representative.

www.arizonatile.com

ARIZONA TILE

BASALTINA SERIES

For greater design versatility, a listelle can be created from this stack.
Please refer to the line drawings on this page.



11-1/2" x 23-5/8" Stack

