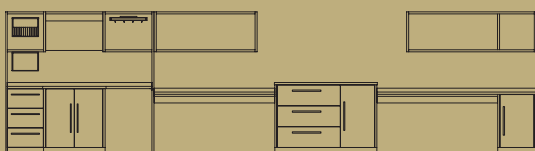


*Brand Approved Supplier*



**Home2 Suites** by Hilton



furniture for **hospitality**  **KLEM**

## Home2 Suites by Hilton

### VANITY

*Recessed casework with generous storage, features flush-face drawers contrasting the stone top and contemporary full-length pulls.*

### FREESTANDING NIGHTSTAND

*Rounding out the asymmetrical headboard design, features angular legs and accessible open shelving.*

### NESTING END TABLES

*Clean aesthetic with practical use for guests.*

### WALL UNIT

*A home for everything. Multi-dimensional accents contrast with smooth stone surfaces, built with exceptional detail.*

### HEADBOARD

*The modern design features a cantilevered nightstand, integrated lighting and upholstered panel for a balanced silhouette.*

### COMPONENTRY

*Standard in laminate with leveling glides, edge banding and sealed for moisture control. Made in the USA.*



### MATERIALS & SPECIFICATION

*For material selections, specifications, and statement of line, visit our website. [www.klemhospitality.com/klem\\_home2suites](http://www.klemhospitality.com/klem_home2suites)*



*Part of the Jasper Group family of brands, Klem is furniture for hospitality.*

The Klem brand manufactures exclusive, customized brand designs as well as product collections. By specializing in overnight stay facilities, we have learned how to provide comfort, customization and convenience for our customers.