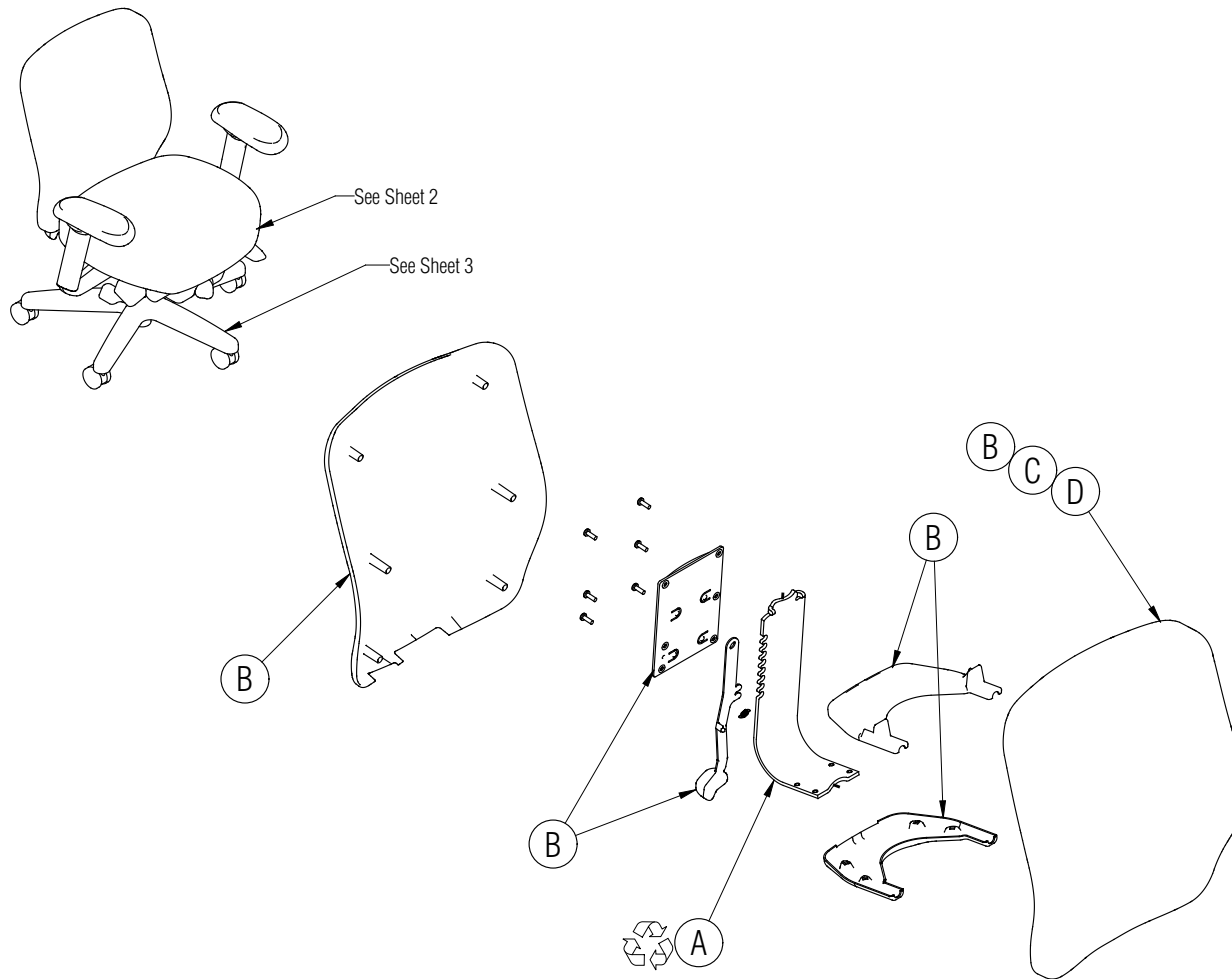


Disassembly Instructions



Engage Task Chair, Engage Stool, Piretti 2000 Task Chair, Piretti 2000 Stool

Material Type: A. Steel B. Plastic C. Foam D. Fabric




Procedure:

1. Pry off the rear shrouds from the backrest.
2. Pry the Back Shroud from the Back Assembly.
3. Remove the screws holding the backrest to the steel backrest support and remove the backrest.

(continued next page)

General Notes:

1. Disassembly time: 30-45 minutes
2. This procedure assumes basic familiarity with hand tools and furniture terminology: no specialized training is required
3. All materials removed and disassembled shall be sorted and segregated with like materials and disposed of or recycled according to recycling availability or waste acceptance
4. For items to be recycled, refer to KI's End of Life Recycling Matrix and KI's End of Life Recovery Options Matrix, available at www.ki.com

 All fasteners not explicitly tagged are Material Type A: Steel



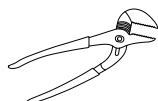
Required Tools



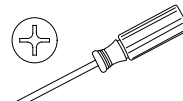
Gloves



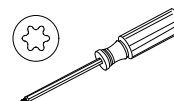
Safety Glasses



Channel Lock Pliers



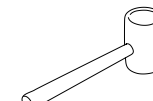
Phillips Screwdriver



Torx Screwdriver



Pry Bar



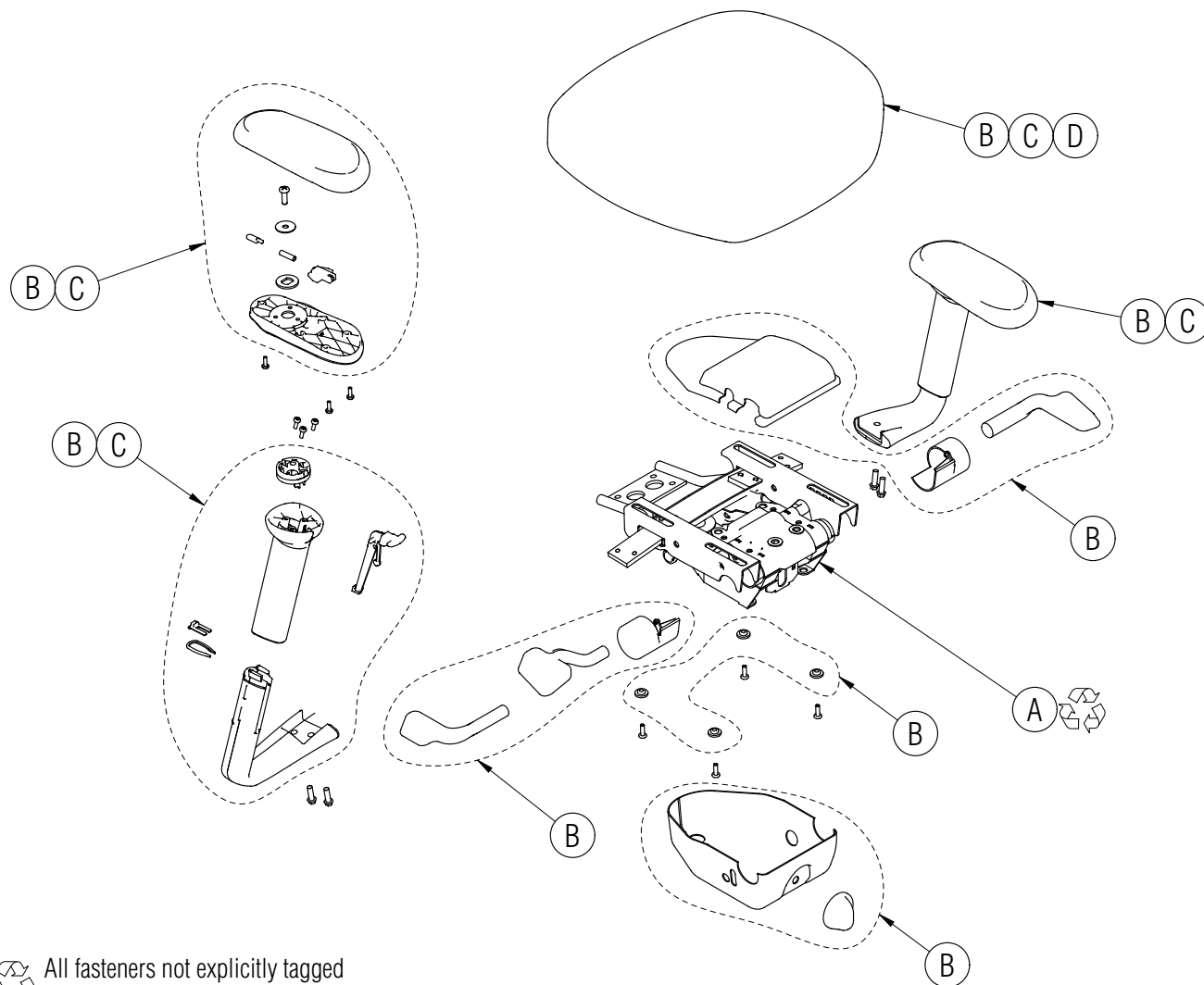
Rubber Mallet

Disassembly Instructions



Engage Task Chair, Engage Stool, Piretti 2000 Task Chair, Piretti 2000 Stool

Material Type: A. Steel B. Plastic C. Foam D. Fabric



4. Remove the screws holding any armrests and the seat to the seat support mechanism and remove the armrests and seat.

5. Pry off the plastic control knob, handles and shrouds from the support mechanism.

(continued next page)

All fasteners not explicitly tagged are Material Type A: Steel

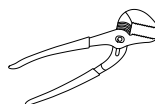
Required Tools



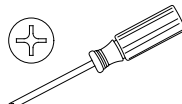
Gloves



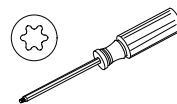
Safety Glasses



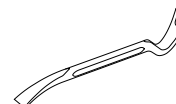
Channel Lock Pliers



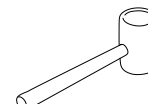
Phillips Screwdriver



Torx Screwdriver



Pry Bar



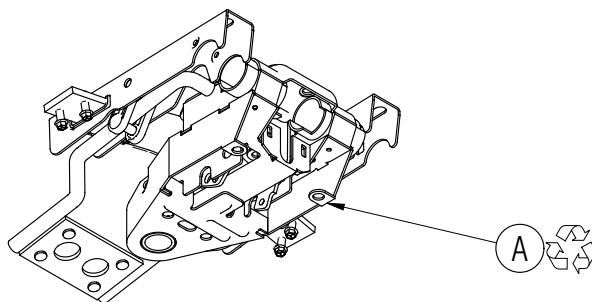
Rubber Mallet

Disassembly Instructions



Engage Task Chair, Engage Stool, Piretti 2000 Task Chair, Piretti 2000 Stool

Material Type: A. Steel B. Plastic C. Foam D. Fabric



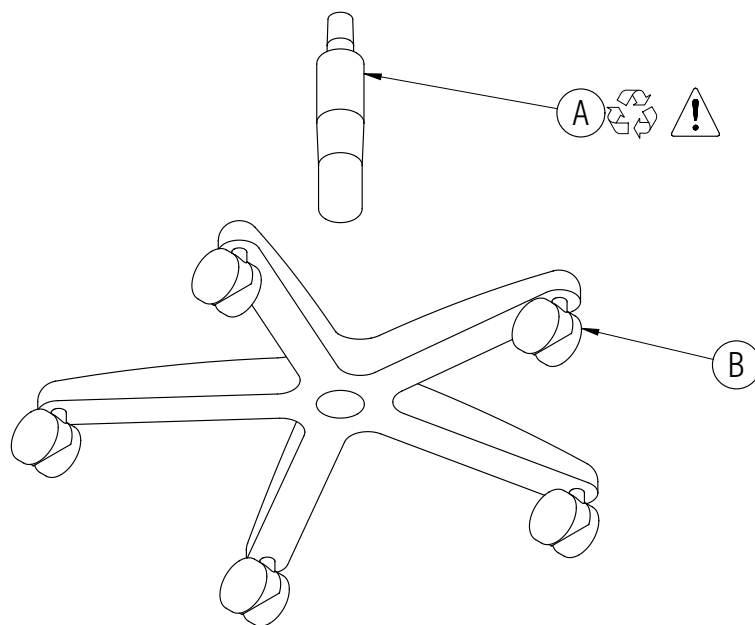
6. Invert the chair and gently tap on the bottom of the steel height adjustment cylinder while lifting the plastic base. Remove the plastic chair base and height adjustment cylinder shroud from the steel cylinder.




WARNING: CONTENTS UNDER PRESSURE!
REMOVE WITH CAUTION.

7. Discard the backrest, seat, chair base and plastic components.

8. Recycle the seat support mechanism, back support (J-bar) and height adjustment cylinder.



 All fasteners not explicitly tagged
are Material Type A: Steel

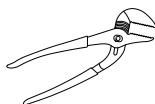
Required Tools



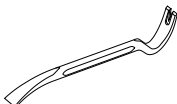
Gloves



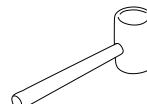
Safety Glasses



Channel Lock Pliers



Pry Bar



Rubber Mallet