



Installation Guidelines

OBEX Entrance Flooring Solutions

ARX Modular Grid Collection: Prior, Tergo, Forma

1. General Information

- a. Traffic conditions
- b. Wheeled Traffic
- c. Temperature
- d. Dimensional stability

2. Installation

- a. Subfloor Preparation
- b. Straight/Rectangular Installations
- c. Wall to Wall Installations
- d. Curved/Odd-shaped Installations
- e. Revolving Door Installations
- f. Surface Mounted

3. Edging Systems

4. Glue Recommendations

1. General Information

ARX modular grids Prior, Tergo and Forma are available in two thicknesses:

- 16 mm for installation in recessed mat wells with a depth of 17 mm
- 11 mm for recessed areas from 10-12 mm depth, or for surface mounted installations.

Tiles in 11 mm thickness can also be fitted in juxtaposition to any other floor covering product of +/- 10 mm thickness - with a nosing finish for joints.

All three products and thicknesses can also be surface mounted with an adapted edging system (PVC edging or aluminium ramped profile - see section 3 for edging).

Grids are pre-assembled in units of 6 tiles and are easy to disconnect by hand to get individual pieces.

All tiles have a heel proof construction to prevent heels from being trapped and are designed to comply with requirements contained in DDA and BS 8300: 2001.

Intense traffic conditions above 3000 people per day

In case of intense traffic above 3000 people per day - we recommend that grids in 11 mm closed construction (Prior 11C, Tergo 11C and Forma 11C) are bonded to the mat well base with a permanent adhesive - please see section 4 for glue recommendations.

Wheeled traffic above 100 kg

All three OBEX modular grids are designed to stand up to high traffic of people and trolleys commonly used in shopping centres and airports.

In case of super heavy wheeled traffic of goods in excess of 100 kg per load - we recommend to install Prior 16C, Tergo 16C and Forma 16C modular grids which are specifically designed to cope with such extreme conditions.

The back of these grids features a special structure designed for good contact with the subfloor to allow easy bonding when necessary.

If the architecture does not allow the use of 16 mm tiles, and the installation is done with 11 mm grids, then the total area should be glued to subfloor to cope with heavy wheeled traffic.

Temperature

The tiles need to be at room temperature when the installation starts (15°C to 25°C)

Dimensional stability

Individual ARX grids are dimensionally stable but the total size of the matting area may expand or shrink by a few mm when the product is exposed to cold temperatures (below 10°C) or warm environments (above 30°C). To allow for this, it is important to leave a few mm gap (+/- 3 mm) around the grid installation when fitting ARX products.

2. Installation of Prior, Tergo & Forma Tiles

Start all installations by ensuring that mat well subfloor is level, sound and clean.

Subfloor Preparation

Ensure subfloor is level, sound and free of contaminants such as grease. If greasy, clean with degreaser and prime using neoprene primer. Use levelling compounds or latex if necessary. It may also be necessary to screed up the mat well area when depth is more than 17 mm, or to compensate the mat well depth by using OBEX Eco-flex underlay (+/- 4 mm thickness)

Straight / Rectangular Installations (mat well or surface mounting)



ARX grids are packaged in pre-assembled units of 6 tiles



Prepare assembling of the tiles



Assemble tiles with a hammer or rubber mallet(*)

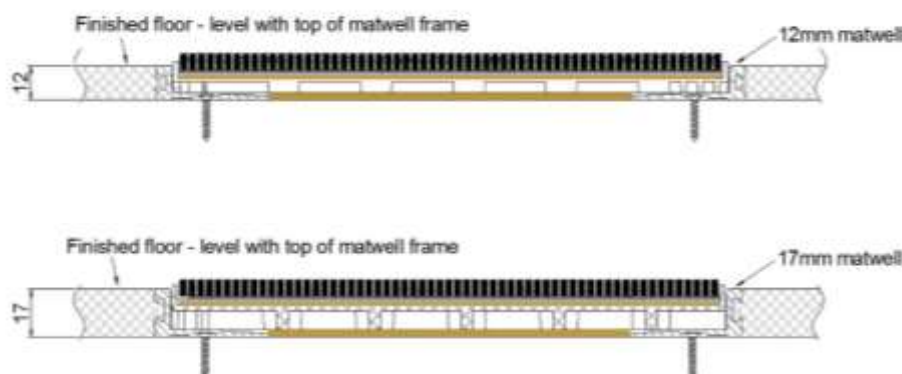


Overlap the mat well frame and cut with ruler and knife

(*) Using Prior grids as edging to Tergo or Forma is recommended

Cutting through ARX tiles is easy with a sharp knife. For long range cutting, use a steel ruler as a guide to get a straight cut.

Leave a tolerance gap of a few mm around the mat (2 to 3 mm on each side) for expansion in the mat well. (see dimensional stability)

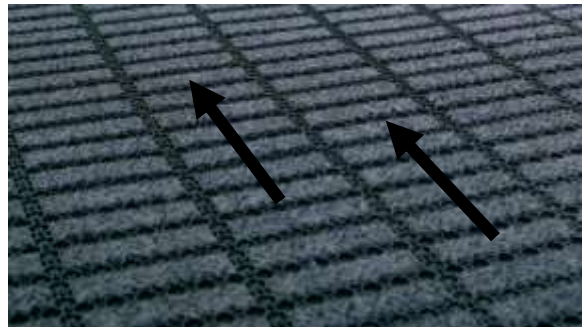


Indoor installation:
Forma or Tergo 11mm
Closed Recessed
in a 12mm matwell.

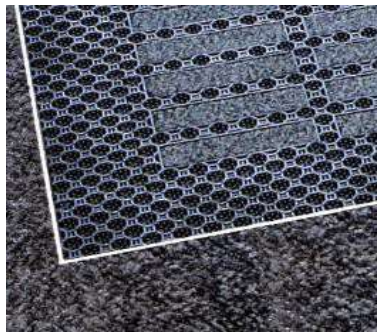
Indoor installation:
Forma or Tergo 16mm
Closed Recessed
in 17mm matwell.

1. Mark the centre of the mat well using chalk, then piece together the full tiles using a hammer until you reach the edges so that there is an even space on all sides. Ensure that Forma/Tergo is fitted with the textile inserts in horizontal position, perpendicular to the traffic direction.

Traffic Direction



2. We recommend that Prior is then used to frame the installation on its perimeter.



3. Cut off excess material using a sharp knife by aligning the straight edge of the tiles with the mat well edge (cut off the grids connectors when they come into direct contact with the mat well frame).
4. Make sure tiles are not squeezed inside the mat well frame and that the installation is flat and level. You should leave a few millimetres gap between the product and the frame all around the installation to allow expansion/shrinkage of the total area.

Wall To Wall Installations

1. Mark the centre of the area using chalk, and piece together the modular grids from this point to the limit where full tiles will fit into the space (i.e. not folded up against the wall).
2. Measure from the wall to the edge of the tiles (excluding grids connectors). Measure this distance on the tiles to be fitted and cut accordingly.

Curved / Odd Shaped Installations

Cut off excess material using a sharp knife, visually checking that the mat well edge is aligned with the product. You can see through the open product structure of Prior 16, Forma 16 and Tergo 16 - making this operation easier.

For closed construction grids (11C and 16C versions of the products), use a template made of stiff cardboard or other suitable material, or simply use the previously installed product when refurbishing the area.

Revolving Door



1. If the existing matting is a good fit and can be removed without damage, use it as a template.
2. If there is no existing matting or if it is not useable, template using stiff cardboard or other suitable material.
3. Where templating is not possible, either:
 - a) Measure exact diameter of well, use dividers to mark pre-assembled Forma and/Tergo/or Prior, and then cut,
OR
 - b) Put central tile into place then piece together to edge of well and cut as necessary.

General Notes: Avoid leaving connecting pins showing on edges of well. Cut them off to get regular surface contact between the product and the mat well frame.

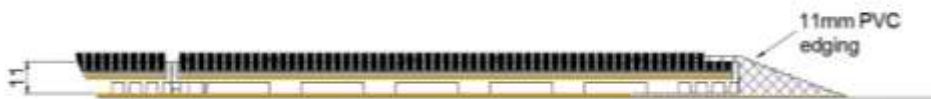
3. Edging Systems

Prior, Tergo & Forma grids - Surface Mounted Installations

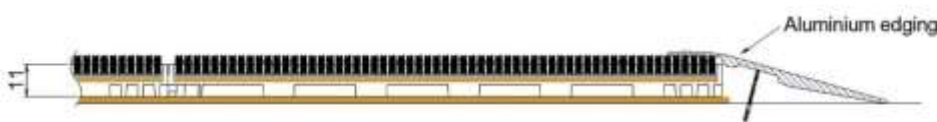


Outdoor installation:
Prior or Tergo 16mm
Open - Surface mounted
with PVC edging.

UNIVERSAL ALUMINIUM EDGING CAN ALSO BE USED FOR OUTDOORS INSTALLATION IN 16MM



Indoor installation:
Forma or Tergo 11mm
Closed - Surface mounted
with PVC edging.



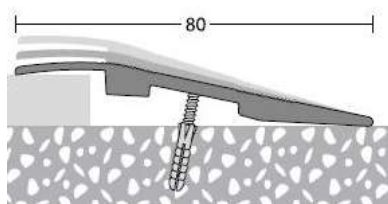
Indoor installation:
Forma or Tergo 11mm
Closed - Surface mounted
with Universal
Aluminium edging.



Indoor installation:
Forma or Tergo 11mm
Closed - Surface mounted
with 11mm Aluminium edging.

Edging systems for ARX modular grids are designed to have a straight point of contact with the tiles. It is absolutely necessary to cut the male and female connectors on the side of the grids before assembling with the aluminium or PVC edging ramps.

UNIVERSAL ALUMINIUM EDGING available in 2.7 metre lengths for OBEX products between 8 and 16 mm. It must be screwed into the subfloor to ensure stability



PVC EDGING is available in 11mm and 16mm thickness and 2 metre lengths
Use a mitre box or a template to cut at a 45° angle to create corners.



ALUMINIUM EDGING Available in 11mm thickness and 2.7 metre lengths
Pre-mitred corner pieces are available for ease of installation - avoiding 45° cuts on site
Aluminium edging must be screwed into the subfloor to ensure stability



ECOFLEX® UNDERLAY Easy to use for mat well depth compensation
Available in sheets of 40 x 60cm with 30 pieces per box (= 7.2 m² per box)



4. Glue Recommendations

Glue for PVC edging

We recommend a cyanoacrylate glue to be used along the full length of all joins and the connecting tab on each PVC edge strip, or a PVC to PVC contact glue (such as Gorilla for ex.) that is supplied with an applicator to apply the glue in the U shape of the edging



When gluing grids to subfloor, we recommend the following glues:

Web site	www.uzin.com	www.bostik.com	www.mapei.com	www.fball.co.uk
Manufacturer	UZIN	BOSTIK	MAPEI	F.BALL
Release bond (Glue stays soft when dry - allowing easy product release)	Universal tackifier	-	Ultrabond Eco 810	F41
Permanent bond (Glue becomes hard when dry - making product release difficult)	KR430 KE2000S	PowerElastic GreenFusion 2	Ultrabond G 21 Ultrabond Eco 560 Ultrabond G 19	F45 F61

Note: Milliken and Company and its Flooring Division are not responsible for the use and applications of these products, and for potential direct or consequential damage that could occur during or after product installation. Please refer to the adhesive manufacturer's product and safety datasheets for information.

For answers to questions about the installation procedures
please contact Milliken at: Phone number: 1-800-528-8453
(Option 2 @ prompt for Quality Assurance)

© Milliken Mats 2016. Milliken and Milliken Mats are trademarks by Milliken & Company.