



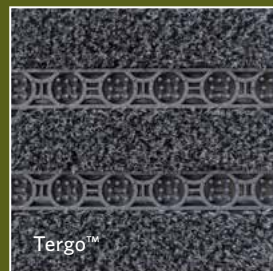
OBEX®
ENTRY SYSTEMS

ARX

Prior™ / Tergo™ / Forma™ 2.0



Prior™



Tergo™



Forma™ 2.0



PRICE

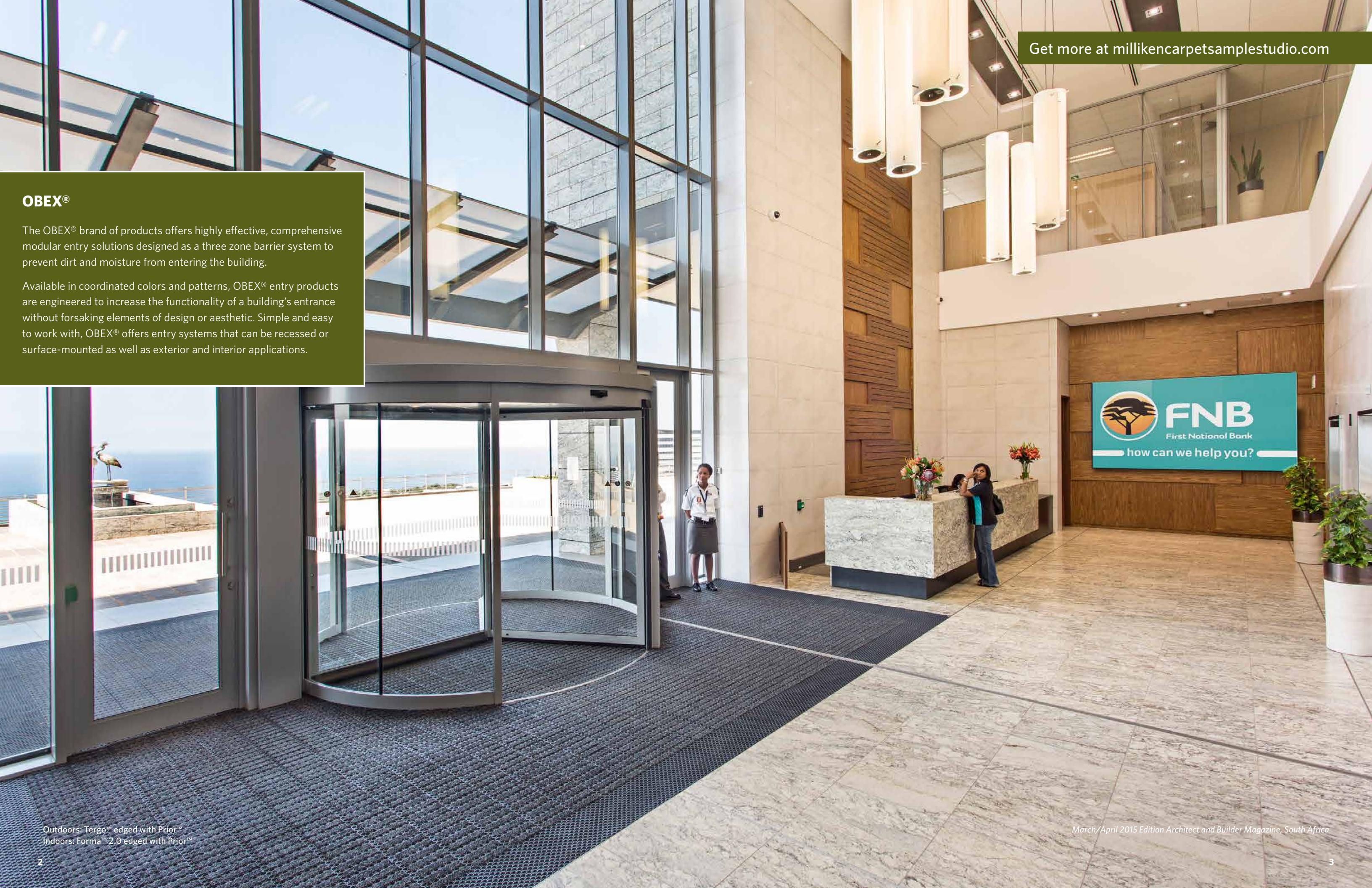
Milliken™

150
years of *Milliken*

OBEX®

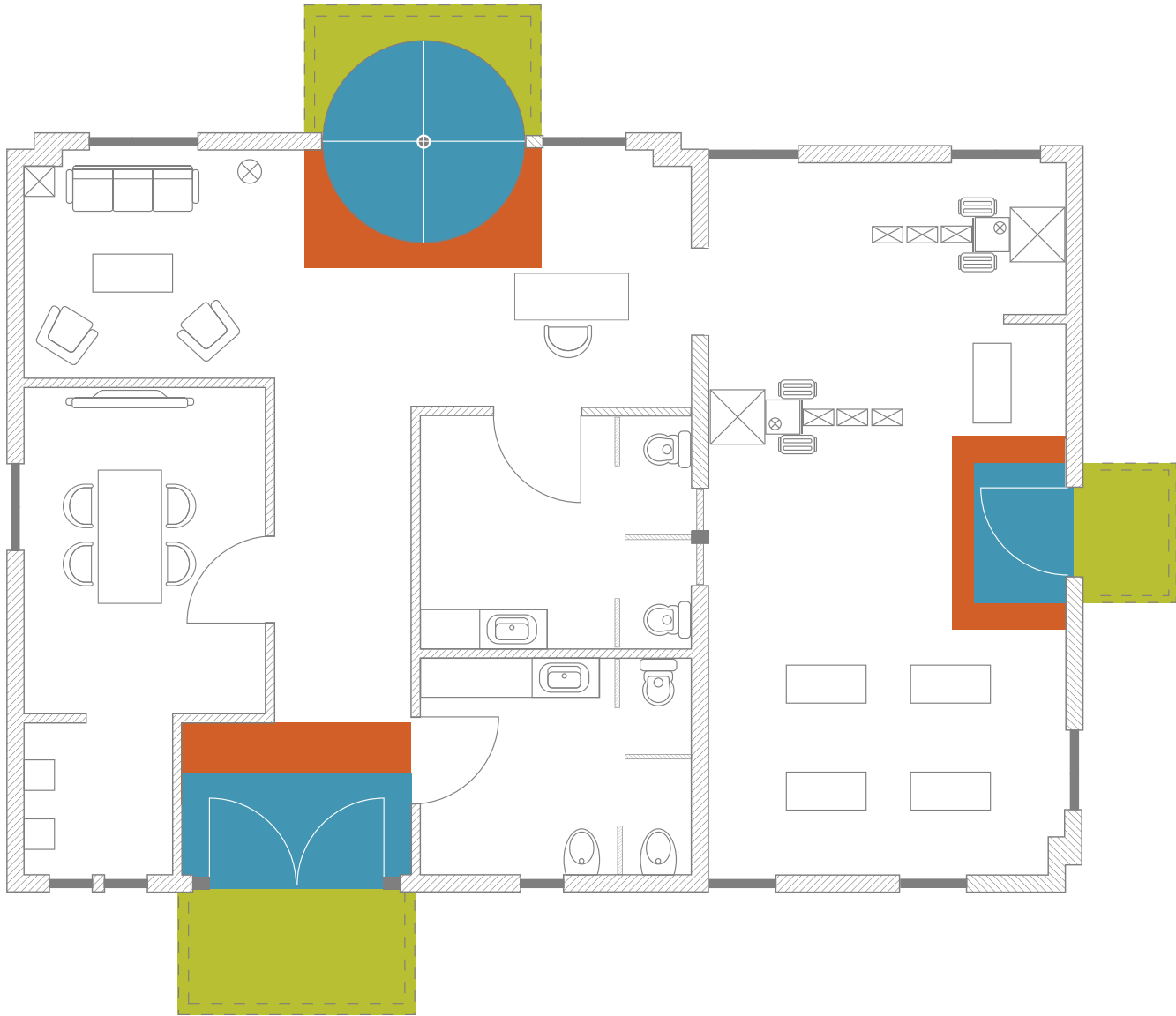
The OBEX® brand of products offers highly effective, comprehensive modular entry solutions designed as a three zone barrier system to prevent dirt and moisture from entering the building.

Available in coordinated colors and patterns, OBEX® entry products are engineered to increase the functionality of a building's entrance without forsaking elements of design or aesthetic. Simple and easy to work with, OBEX® offers entry systems that can be recessed or surface-mounted as well as exterior and interior applications.



Outdoors: Tergo™ edged with Prior™
Indoors: Forma™ 2.0 edged with Prior™

OBEX® ZONE ENTRY SYSTEM



- ZONE 1

OUTDOORS: The area just before the building access—ideal for placing a product with scraping action to remove grit and heavy dirt particles such as sand and snow.

Milliken Product Solutions: Prior™ and Tergo™
- ZONE 2

INDOORS: The primary area just inside the building where a product with dual action—scraping and absorbing—should be installed to defend against dirt and moisture. This area often features a recessed matwell.

Milliken Product Solutions: Tergo™, Forma™ 2.0, and Quadrus Brush
- ZONE 3

INDOORS: Secondary area inside the building after Zone 2. A textile product for moisture absorption is the preferred choice. Also applicable to circulation areas other than entrances.

Milliken Product Solutions: Quadrus and Quadrus Brush

Arx Collection

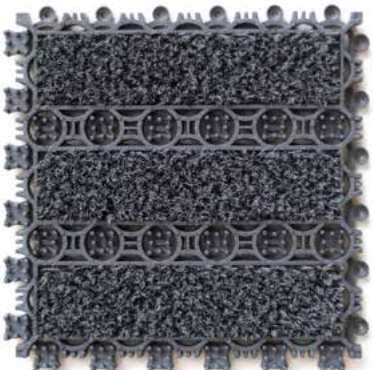
Arx is our ultra-durable interlocking tile system designed especially for high-traffic areas. Featuring Prior™, Tergo™, and Forma™ 2.0, Arx efficiently stops dust, dirt and moisture brought into a building within the first 10 to 30 feet. Prior™ & Tergo™ offer tough Zone 1 protection and are available in a graphite grey color, while Forma™ 2.0 offers Zone 2 protection in 8 contemporary colors fully coordinated with Quadrus modular tiles.



Prior™

Prior™ is a flexible multi-purpose modular flooring product with a structure that incorporates resilient scrapers to remove particulate dirt. For outdoor applications, the open construction of Prior™ 16 is recommended for drainage of water and dry dirt.

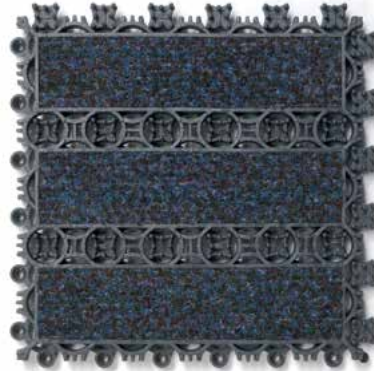
Prior™ can also be installed together with Tergo™ or Forma™ 2.0 in recessed mat wells, or surface mounted with edging finish.



Tergo™

Tergo™ modular tiles are manufactured with heavy duty textile inserts made of 100% nylon monofilament for a superior brushing action.

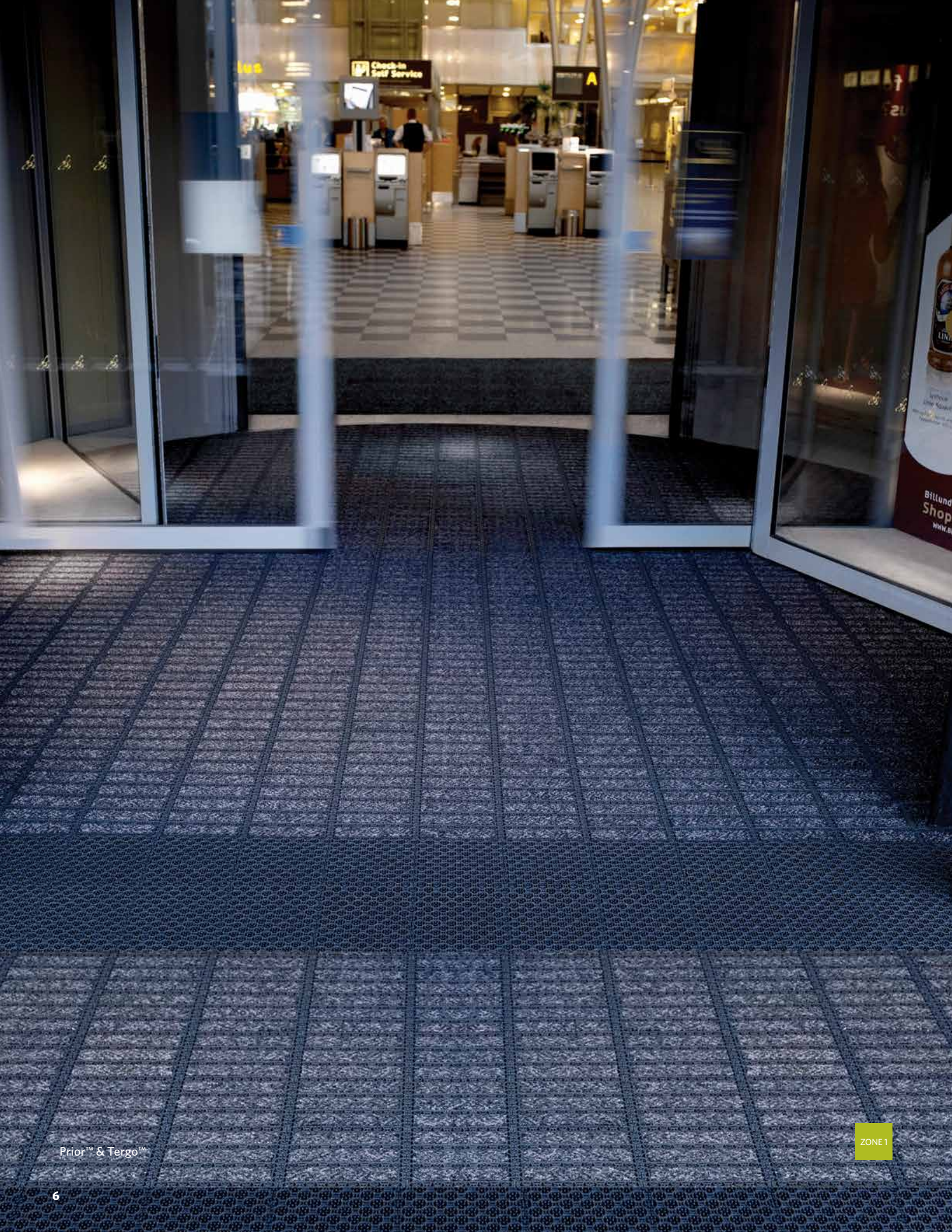
Tergo™ works as a first line of defence and can be combined with Forma™ 2.0 tiles for a complete entrance matting solution.



Forma™ 2.0

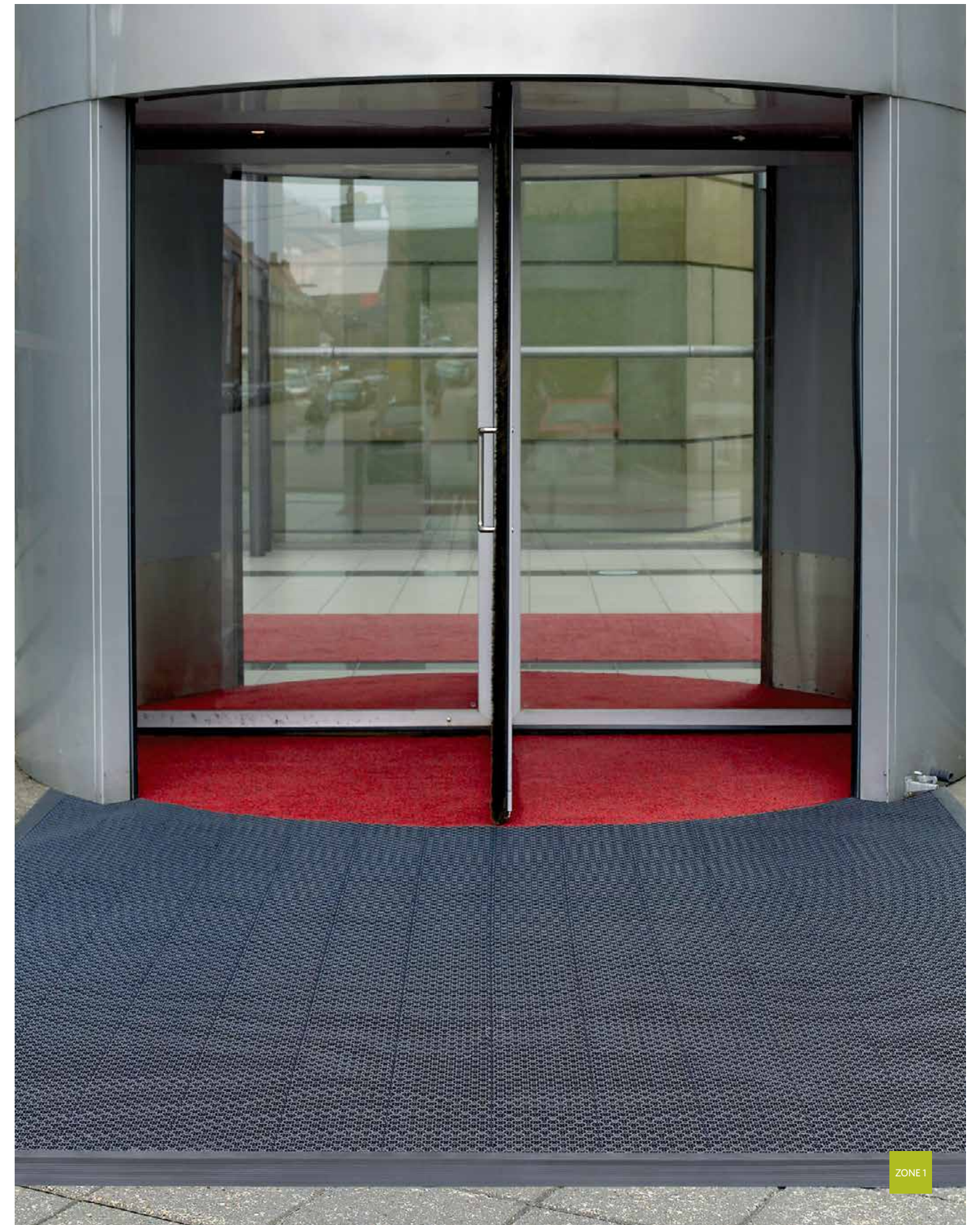
The combination of the patented Milliken duo scraper textile with the Obex® interlocking modular tile carrier produces a revolutionary matting system which is unequalled in performance and unique in aesthetics : Forma™ 2.0.

Combining Tergo™ and Forma™ 2.0 tiles together on the same installation further increases performance on dry dirt pick up by 50%. Forma™ 2.0 is suitable for high traffic areas such as airports and shopping centers.



Prior™ & Tergo™

ZONE 1



ZONE 1

Prior™



Forma™ 2.0 16 installed in recessed matwell with Prior™ border, followed by Forma™ 2.0 11C surface mounted with aluminum edging and Prior™ border

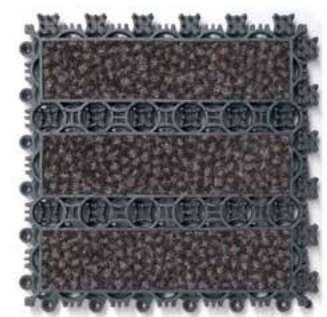


Forma™ 2.0

Forma™ 2.0 colorline



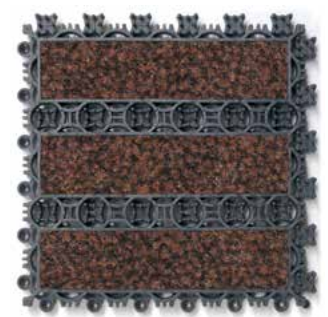
FOR144-27 BOUNDARY



FOR13-27 FORCE



FOR23-27 CONVERGE



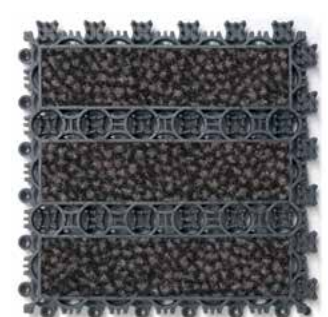
FOR98-27 RADIUS



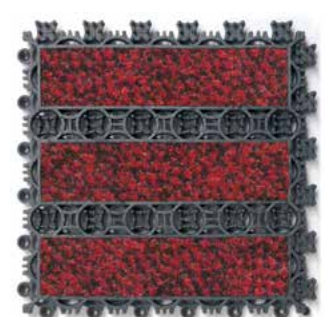
FOR73-27 JETTISON



FOR123-27 SHOCKWAVE



FOR119-27 STREAMLINE



FOR109-27 FRICTION

Construction & Installation

Prior™ 11C / Tergo™ 11C / Forma™ 2.0 11C

- Closed construction to allow easy cleaning from the surface
- 11 mm thickness for installation in shallow matwells (3/8" deep) or surface mounted
- Directly on the subfloor next to any type of floor covering.

Prior™ 16 / Tergo™ 16 / Forma™ 2.0 16

- Open structure for an efficient drainage and storage of dirt and moisture
- 16 mm thickness for installation in deeper recessed matwells (5/8" depth)
- Suitable for sites with matwell drains, cleaning will require removing product from recessed matwell

Prior™ 16C / Tergo™ 16C / Forma™ 2.0 16C

- 16 mm thickness for installation in recessed deeper matwells (5/8" depth) or surface mounted
- Closed construction to allow easy cleaning from the surface

Easy to install



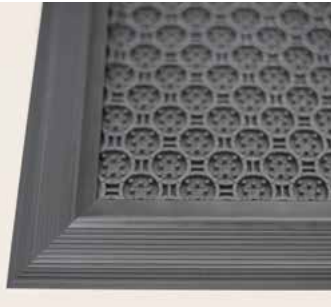
1. Arrives pre-assembled in 6 tile units



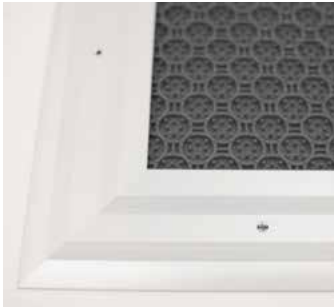
2. Quick to assemble with a hammer



3. Easy to cut with ruler and knife



PVC edging



Aluminum edging

Edging System

A simple and easy to assemble edging system is available for surface mounted installation.

- A PVC edging system is available for products in 11 mm or 16 mm thickness.
- A universal aluminum edging system for products between 8 mm and 16 mm thickness.

Specs

Prior™ (Prior™ 11C, Prior™ 16, Prior™ 16C)

Tile Material UV-Resistant PVC	Total Weight <i>11C:</i> 1.110 lb/ft ² (5.419 kg/m ²) <i>16:</i> 1.456 lb/ft ² (7.109 kg/m ²) <i>16C:</i> 1.913 lb/ft ² (9.340 kg/m ²)	Tile Size <i>Nominal:</i> 200 mm x 200 mm (7.87" x 7.87") <i>Usable when installed:</i> 195 mm x 195 mm (7.677" x 7.677")
Tile Construction <i>11C:</i> Closed, <i>16:</i> Open, <i>16C:</i> Closed	Outdoor Temperature Resistance -22 °F to +122°F (-30°C to 50°C)	ADA / BS 8300 / ISO 2152 Compliant
Total Thickness <i>11C:</i> 11 mm (.433") <i>16 & 16C:</i> 16 mm (.630")		LEED® Point Contributor

Tergo™ (Tergo™ 11C, Tergo™ 16, Tergo™ 16C)

Tile Material UV-Resistant PVC	Yarn Type Milliken-Certified WearOn® Nylon Type 6,6 Monofilaments	Tile Size <i>Nominal:</i> 200 mm x 200 mm (7.87" x 7.87") <i>Usable when installed:</i> 195 mm x 195 mm (7.677" x 7.677")
Tile Construction <i>11C:</i> Closed, <i>16:</i> Open, <i>16C:</i> Closed	Textile Dye Technology Solution Dyed	ADA / BS 8300 / ISO 2152 Compliant
Total Thickness <i>11C:</i> 11 mm (.433") <i>16 & 16C:</i> 16 mm (.630")	Total Weight <i>11C:</i> 1.397 lb/ft ² (6.821 kg/m ²) <i>16:</i> 1.860 lb/ft ² (9.081 kg/m ²) <i>16C:</i> 2.124 lb/ft ² (10.370 kg/m ²)	LEED® Point Contributor
Textile Construction Tufted, Cut Pile		

Forma™ 2.0 (Forma™ 2.0 11C, Forma™ 2.0 16, Forma™ 2.0 16C)

Tile Material UV-Resistant PVC	Yarn Type Milliken-Certified WearOn® Nylon Type 6,6 Mono- and Multi- filaments Twisted and Heat Set	Tile Size <i>Nominal:</i> 200 mm x 200 mm (7.87" x 7.87") <i>Usable when installed:</i> 195 mm x 195 mm (7.677" x 7.677")
Tile Construction <i>11C:</i> Closed, <i>16:</i> Open, <i>16C:</i> Closed	Textile Dye Technology Millitron®	ADA / BS 8300 / ISO 2152 Compliant
Total Thickness <i>11C:</i> 11 mm (.433") <i>16 & 16C:</i> 16 mm (.630")	Total Weight <i>11C:</i> 1.403 lb/ft ² (6.850 kg/m ²) <i>16:</i> 1.866 lb/ft ² (9.111 kg/m ²) <i>16C:</i> 2.130 lb/ft ² (10.400 kg/m ²)	LEED® Point Contributor
Textile Construction Tufted, Cut Pile		

ARX

Prior™ / Tergo™ / Forma™ 2.0

Have you seen our other collections? Visit us online today.



Arcadia



Color Field



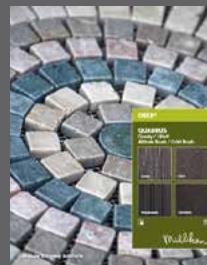
Identity One



LVT



Next Dimension



Quadrus



Growing greener for over 100 years.

Visit www.millikenfloors.com for more information.

Customer Concierge 800.824.2246 | millikenfloors.com
© 2015 Milliken & Company | Design © Milliken & Company | Made in the USA

Cover image: Ancient door in historical quarter of the city of
Orvieto, Italy, by zebra0209. © 2015 Shutterstock

2710025593
CP 0815

This tile product is covered by one or more patents, published applications and/or patents pending. Specifications are subject to normal manufacturing tolerances and may be changed without prior notice.