

OBEX®

Entrance Flooring Solutions

Maintenance Guidelines

ARX collection :

Prior™ / Tergo™ / Forma™2.0



Milliken.

Maintenance Guidelines Prior™

Prior™11C / Prior™16 / Prior™16C

General

Prior™ modular grids are designed specifically to remove the maximum amount of tracked in dirt particles. The construction is excellent at trapping soil therefore thorough cleaning is essential to ensure optimum performance and secure product durability.

Periodic Cleaning

When installed in a recessed mat well, **Prior™16 Open** matting should be removed from the recessed area and the well should be thoroughly cleaned by removing all grit, soil, dust, etc.

Then place the matting at an appropriate outdoor area and hose it with a water jet and use a stiff broom to remove dirt. High pressure water jet can also be used.

The frequency of cleaning will depend upon the volume of traffic over the matting and the level of soiling at the site. An individual evaluation is recommended.

Prior™11C and Prior™16C should be cleaned as above.

In case of a fitted indoor installation - they could be vacuum cleaned only with a powerful upright machine. It might not be necessary to remove these products from the well since their closed structure will not allow dirt particles to go through the tiles.

When installed as a border to Tergo™ or Forma™2.0 tiles, they should be cleaned with same process as Tergo™ and Forma™2.0.

NOTE FOR ALL ARX MODULAR GRIDS: Prior™ / Tergo™ / Forma™ 2.0

For chewing gum removal we recommend using “Bye Bye Gum”, “Rid A Gum” or similar products with a freezing effect on the gum, making it easier to remove from the product.

The logo for Milliken, featuring the word "Milliken" in a stylized, cursive script.

Maintenance Guidelines Tergo™ Tergo™11C, Tergo™16, Tergo™16C

General

Tergo™ is designed with a rough nylon pile construction as textile inserts which is excellent at trapping soil and therefore thorough cleaning is essential to ensure optimum performance and secure product durability.

Daily Cleaning

Daily use of a powerful upright vacuum cleaner will remove loose dirt by help of its rotary brush action. An additional benefit of the brush action is to groom the pile of Tergo™ thus helping to reduce pile flattening over a period of time.

We do not recommend the use of a suction only machine such as a tub vacuum cleaner because it cannot successfully remove the dirt from the textile strips due to the impervious backing of Tergo™, nor will it have the grooming effect on the pile.

Note: a Bonnet Buffing type machine with rotating discs should not be used (could cause damage to the pile construction).

Periodic Cleaning

The frequency of cleaning will depend upon the volume of traffic over the matting and the level of soiling at the site.

Tergo™16 Open matting should be removed from the mat well and the well should be thoroughly cleaned to remove all grit, soil, dust, etc. Re-position the Tergo™16 into the mat well. Vacuum clean the Tergo™16 as described above.

Clean the matting area using a hot water extraction machine (see visuals on p 5), paying particular attention to the textile inserts. The temperature should not exceed 50°C.

Tergo™11C and Tergo™16C should be cleaned as above.

When installed in a recessed mat well, it may not be necessary to remove these products from the well as their closed construction will keep dirt on the surface of the matting area.

The Milliken logo is written in a blue, cursive script. The word "Milliken" is followed by a small trademark symbol (TM).

Maintenance Guidelines Forma™2.0

Forma™2.0 11C, Forma™2.0 16, Forma™2.0 16C

General

Forma™2.0 grids feature a high twist dual nylon fiber textile construction as inserts for a superior performance at trapping soil and moisture. Therefore thorough cleaning is essential to ensure optimum performance and secure product durability.

Daily Cleaning

Daily use of a powerful upright vacuum cleaner will remove loose dirt thanks to its rotary brush action. An additional benefit of the brush action is to groom the pile of Forma™2.0 thus helping to reduce pile flattening over a period of time.

We do not recommend the use of a suction only machine such as a tub vacuum cleaner because it cannot successfully remove the dirt from the textile strips due to the impervious backing of Forma™2.0, nor will it have the grooming effect on the pile.

Note: a Bonnet Buffing type machine with rotating discs should not be used (could cause untwisting of the pile construction).

Periodic Cleaning

The frequency of cleaning will depend upon the volume of traffic over the matting and the level of soiling at the site.

Forma™2.0 16 Open matting should be removed from the mat well and the well should be thoroughly cleaned to remove all grit, soil, dust, etc. Re-position the Forma™2.0 16 into the mat well. Vacuum clean the Forma™2.0 16 as described above.

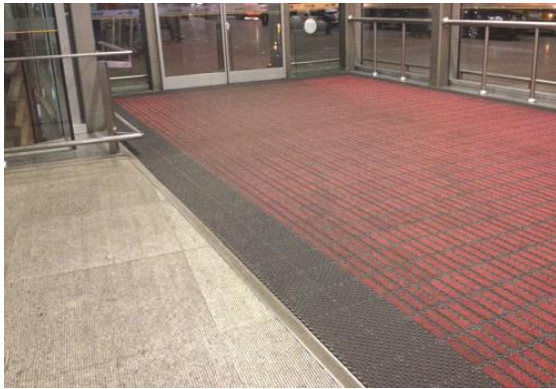
Clean using a hot water extraction machine (see visuals on p 5), paying particular attention to the textile inserts. The temperature should not exceed 50°C.

Forma™2.0 11C and Forma™2.0 16C should be cleaned as above.

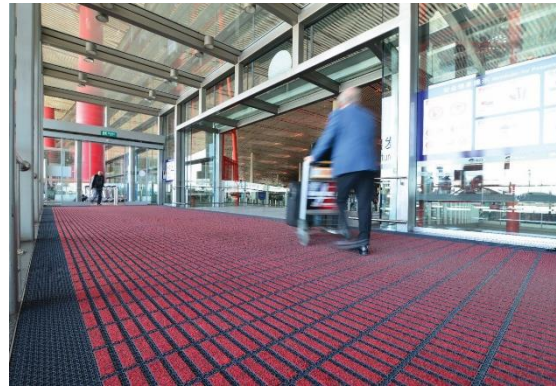
When installed in a recessed mat well, it may not be necessary to remove these products from the well as their closed construction will keep dirt on the surface of the matting area.

The logo for Milliken, featuring the word "Milliken" in a stylized, cursive script.

Daily vacuuming and periodic deep cleaning with hot water extraction is recommended



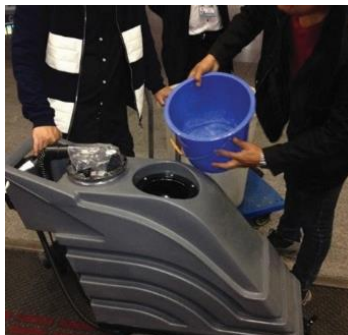
BEFORE



AFTER



3 in 1 water extraction cleaner



Add clean water



And detergent



Water mixed with detergent penetrates the textile to catch soiling and is immediately extracted, leaving minimum moisture that will quickly dry out.

The dirt is collected in the machine tank.