



**FIXATE**  
Velvet



Rows of bright color run parallel to one another, each trying to outrace the other. Varying width stripes introduce an organic quality to the classic precision of pinstripes while deeply saturated colors provide pure streaks of cheer. The feeling is dynamic, optimistic and fresh.

**FIXATE**

is manufactured with Underscore™ ES (Environmentally Sustainable) cushion backing and is certified NSF-140 Gold with 31% pre-consumer recycled content by total product weight. With our optional Underscore™ ESP (Environmentally Sustainable Plus) backing, Fixate has 20% pre-consumer and 11% post-consumer recycled content for an NSF-140 Platinum certification. All Milliken modular carpets are SmARt certified at the Platinum level.

**Construction**  
Tufted, Cut Pile

### Tile size

50cm. x 50cm. (19.7 x 19.7 in.)

### Yarn type

Milliken-certified WearOn® nylon type 6,6

**Stain repel / stain resist /  
soil release**  
StainSmart®

### Standard backing

PVC-Free Underscore™ ES cushion

**Image**

## Fixate Velvet in Transform, monolithic installation

## Recommended installation method



MONOLITHIC



This cushion-back carpet tile product is covered by one or more patents, published applications and/or patents pending. Specifications are subject to normal manufacturing tolerances and may be changed without prior notice.

**Growing greener for over 100 years.**  
Visit [milliken.com](http://milliken.com) for more information.

Customer Concierge 800.824.2246 | milliken.com  
Design © Milliken & Company | Made in the USA

Cover image: *Color Stripes*, by Antonio Arcos.  
©2011, Getty Images

2710017981  
IN 0512



Milliken

Fixate Velvet in Punctuality, monolithic installation





Fixate Velvet in Chocolate, monolithic installation

Available in two modular tile bases, Velvet & Loop, Fixate celebrates the ultimate detail in stripes, exploring precision and varying widths of fine lines. Playful and bold multicolor combinations reside among monochromatics, providing fresh, clear colors and subtle neutrals. The broad palette provides an option for a sophisticated, highly detailed floor that either pops or lies down. The velvet base is a dense, high performing felt-like cut pile that bridges the gap between hard and soft surface and is the perfect canvas for the intricate detail and resolution of this design. The high-performance, loop pile offers an alternative for an everyday performing modular tile.



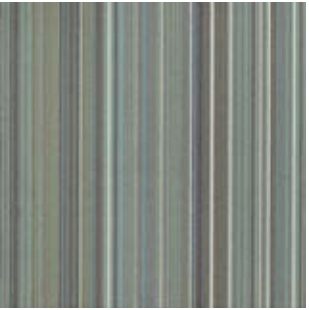
FIXATE FX101 GENETIC DRIFT



FIXATE FX106 ALCHEMY



FIXATE FX111 CARBON



FIXATE FX116 COLD FUSION



FIXATE FX121 EYE-TRACKING



FIXATE FX126 OBSESSION



FIXATE FX131 ISOTOPE



FIXATE FX136 WORLD RECORD



FIXATE FX102 VITAL TWELVE



FIXATE FX107 IN-THE-DETAILS



FIXATE FX112 VICTORY



FIXATE FX117 COALESCENT



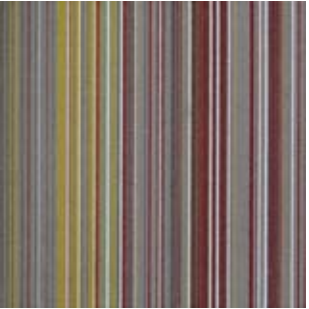
FIXATE FX122 BRASS RING



FIXATE FX127 FREQUENCY



FIXATE FX132 FREUD



FIXATE FX137 LOVE



FIXATE FX103 WEATHER



FIXATE FX108 LIGHTNING



FIXATE FX113 STATUS



FIXATE FX118 FINITE



FIXATE FX123 PERFECTION



FIXATE FX128 NITROGEN



FIXATE FX133 CELEBRITY



FIXATE FX138 TEMPERATURE



FIXATE FX104 CHOCOLATE



FIXATE FX109 ONLINE



FIXATE FX114 HOLE-IN-ONE



FIXATE FX119 PHOTOSYNTHESIS



FIXATE FX124 NON-ZERO



FIXATE FX129 TICK-TOCK



FIXATE FX134 COMPOUND



FIXATE FX139 TRANSFORM



FIXATE FX105 PUNCTUALITY



FIXATE FX110 SUMMIT



FIXATE FX115 PRIZE



FIXATE FX120 MUSE



FIXATE FX125 MUTATION



FIXATE FX130 WINNING ENTRY



FIXATE FX135 SUGAR



FIXATE FX140 DIPLOID

\*Images shown are of Fixate Velvet. Visit the product catalog on [www.millikencarpet.com](http://www.millikencarpet.com) for images of Fixate Loop