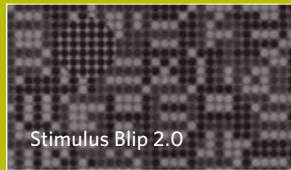
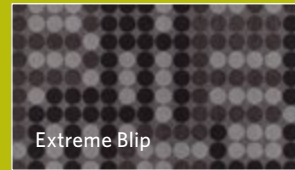
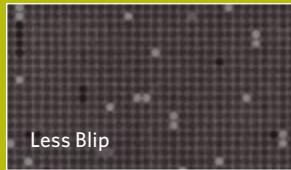
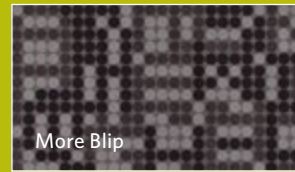
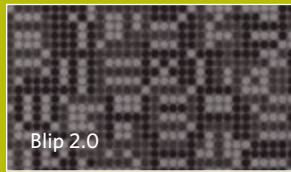
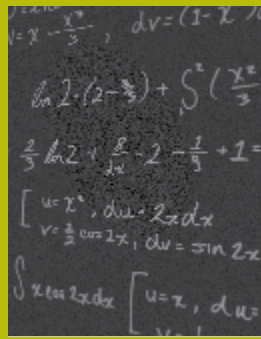


THEORY 2.0

Blip 2.0 / More Blip / Less Blip
Extreme Blip / Stimulus Blip 2.0



Milliken™



INSPIRED. INSPIRING.

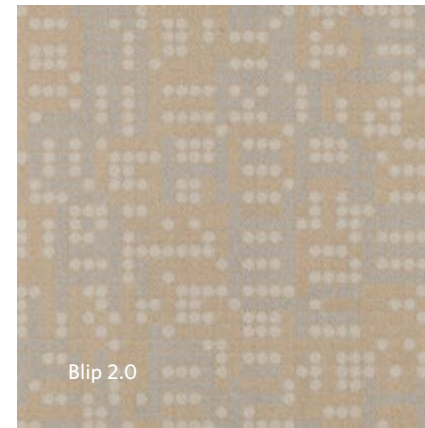
Stacks of ideas and contemplative thought bring intrigue and discovery to the floor. From contemporary circle to classic letter form, shapes abound to create a new sense of place. Combinations of modern color bring fun and play to distinguished patterning. Take on a neutral palette or make a bold step with a special vibe. Rational or abstract, it's your theory.



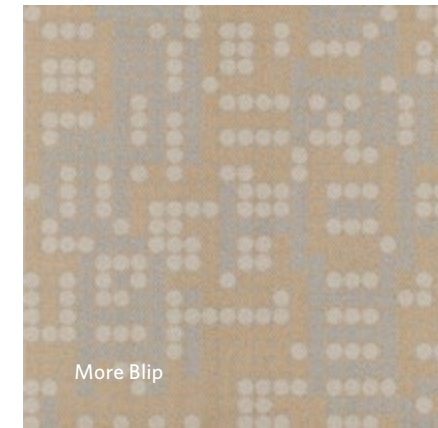
Blip 2.0 in Graduate, monolithic installation

Theory 2.0 Patterns

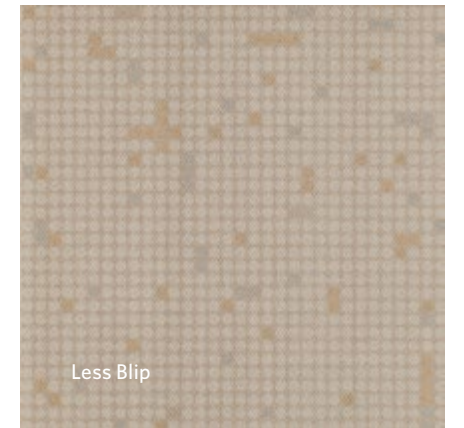
There are nine patterns in the Theory 2.0 collection—five are shown in this brochure. For information and images on the additional four patterns (*Stacks 2.0*, *Cram 2.0*, *Quiet Please 2.0*, and *Eureka 2.0*), please see Volume I of the brochure and architect's folder for the collection.



Blip 2.0



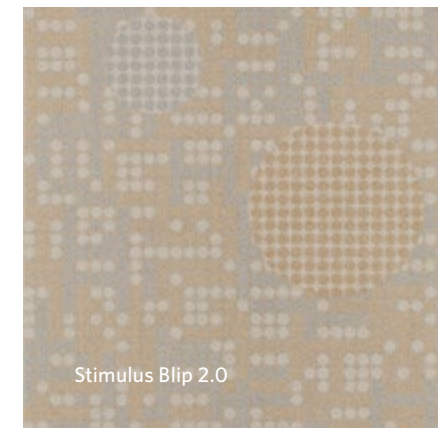
More Blip



Less Blip



Extreme Blip



Stimulus Blip 2.0



Less Blip in Graduate, monolithic installation



Blip 2.0 in Graduate, monolithic installation



More Blip in Graduate, monolithic installation

Get more at millikencarpetsamplestudio.com



Extreme Blip in Graduate, monolithic installation



Blip 2.0, More Blip, and Extreme Blip in Graduate, monolithic gradient installation (from left/right side to center)



Less Blip in Graduate with Tangerine, monolithic installation



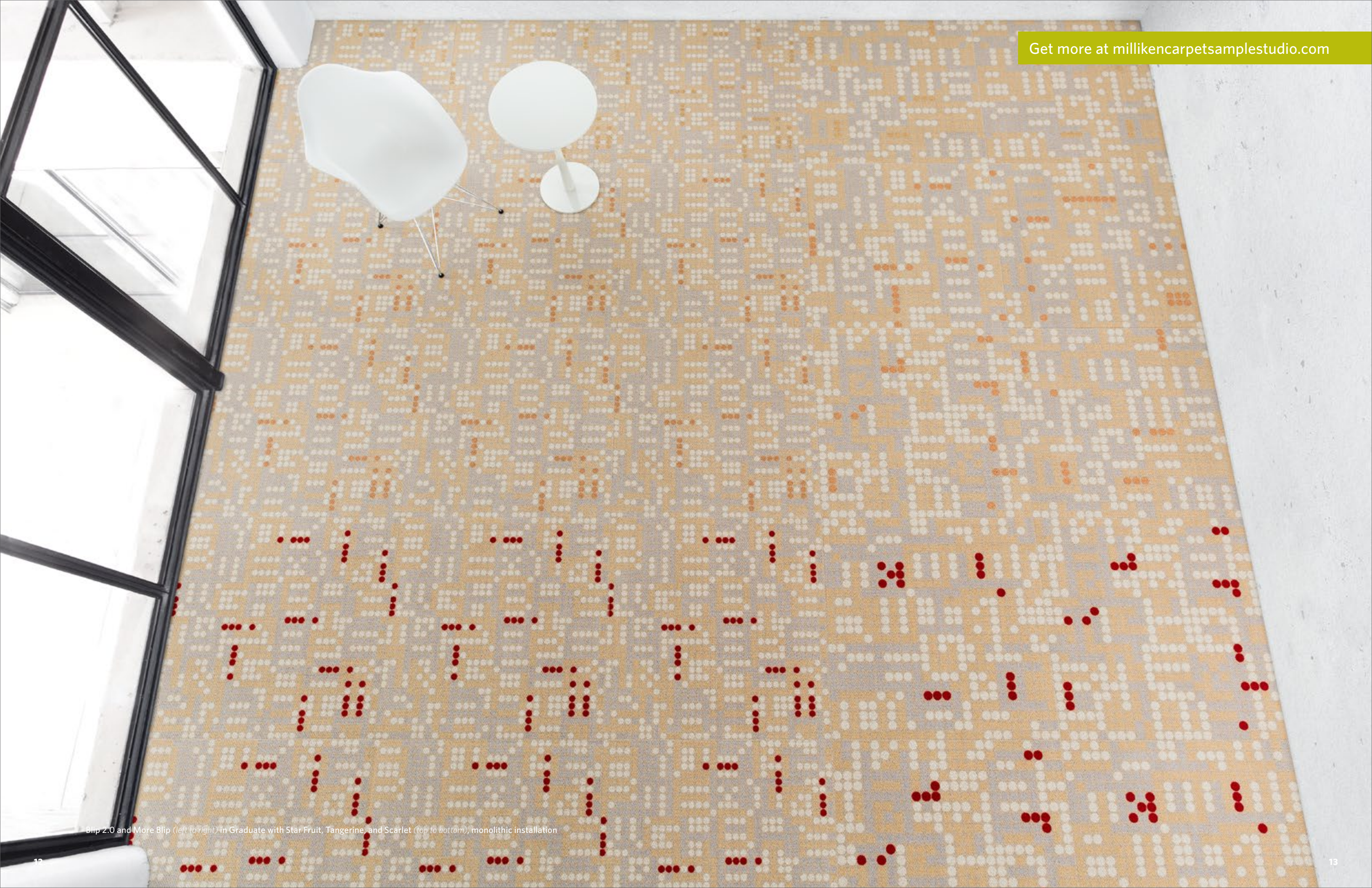
More Blip in Graduate with Tangerine, monolithic installation



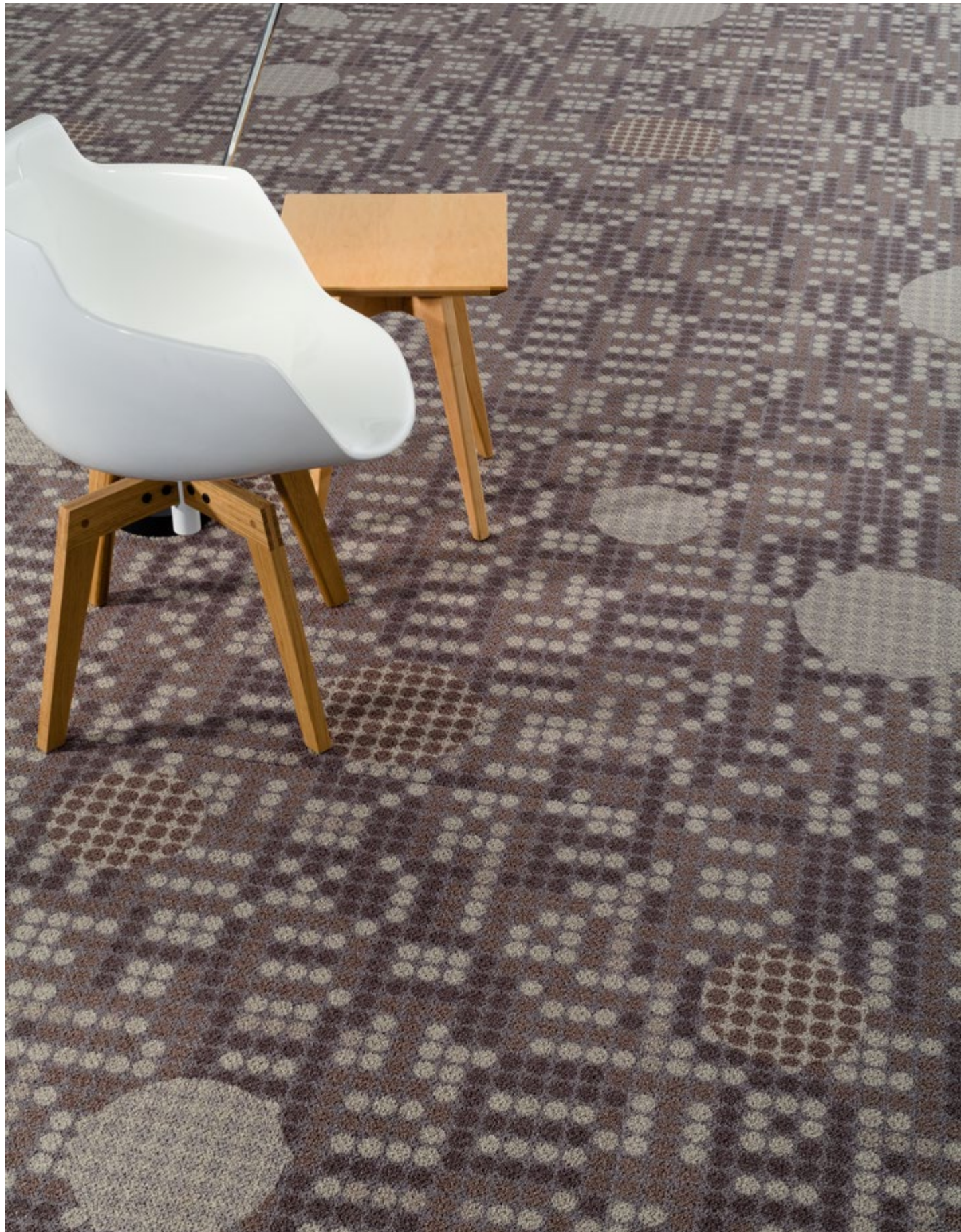
Blip 2.0 in Graduate with Tangerine, monolithic installation



Extreme Blip in Graduate with Tangerine, monolithic installation



Blip 2.0 and More Blip (left to right) in Graduate with Star Fruit, Tangerine, and Scarlet (top to bottom), monolithic installation



Stimulus Blip 2.0 in Nirvana, monolithic installation



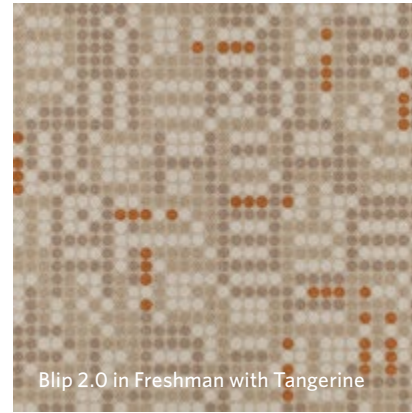
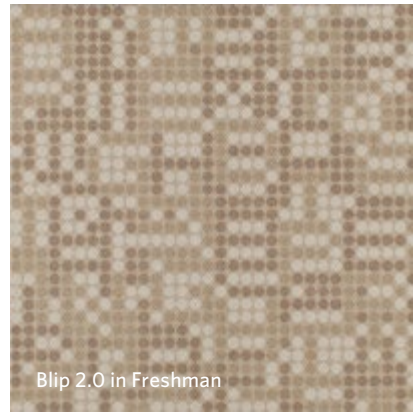
Stimulus Blip 2.0 in Nirvana with Azul, monolithic installation



Blip 2.0 and Stimulus: Blip 2.0 (left to right) in Nirvana with Azul, Apple, and Azul (left to right), monolithic installation

VIBE ACCENTS

Each pattern in the Theory 2.0 collection is available in 16 colors. The colors can be used without accents, or you can create a new design with one of eight, high-energy Vibes for an extra pop of color. For inspiration, see examples of possible combinations in the colorline spread.

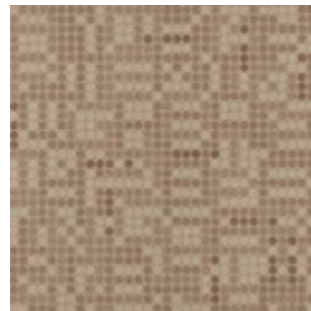


COLORLINE

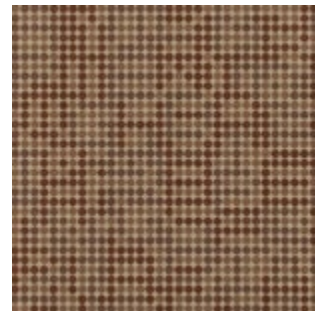
Shown in Blip 2.0



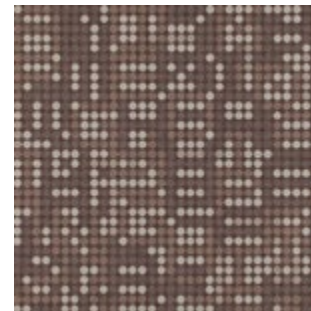
BLP21-65-57-39 GOLDEN RULE



BLP15-96-69-81 CAMPUS KHAKI



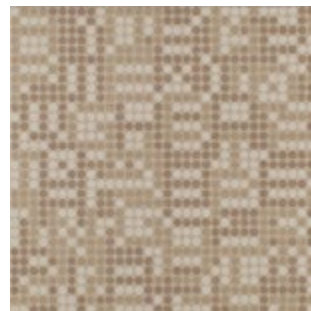
BLP77-98-96-39 PLEDGE



BLP37-44-47-96 BROWN NOSE



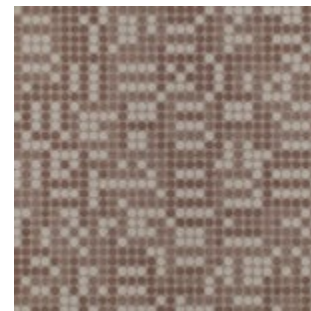
BLP21-48-105-15 GRADUATE



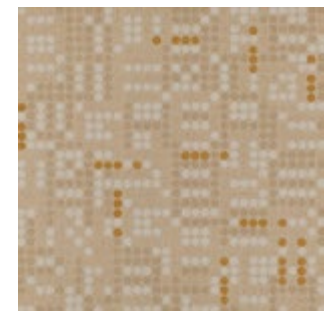
BLP03-69-81-15 FRESHMAN



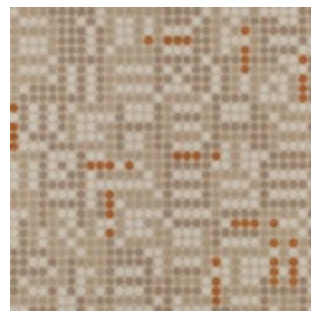
BLP03-97-44-15 SUEDE BUCKS



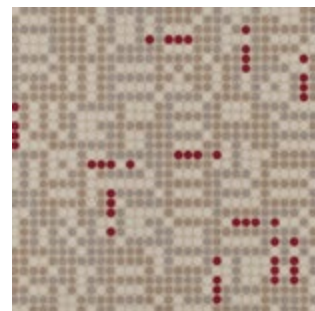
BLP48-47-96-44 TWEED COAT



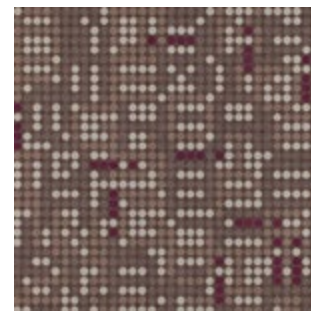
BLP134-65-57-39 GOLDEN RULE WITH STAR FRUIT



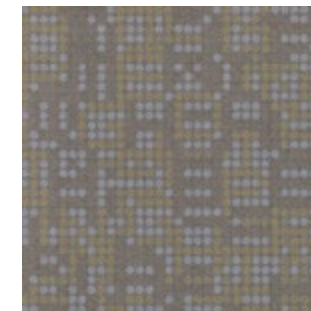
BLP135-69-81-15 FRESHMAN WITH TANGERINE



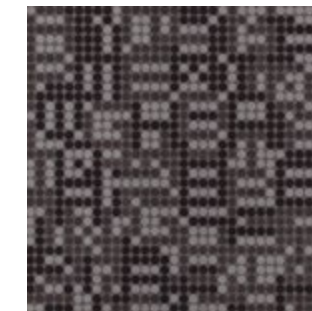
BLP109-97-44-15 SUEDE BUCKS WITH SCARLET



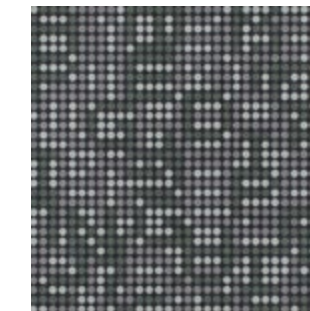
BLP137-44-47-96 BROWN NOSE WITH BOYSENBERRY



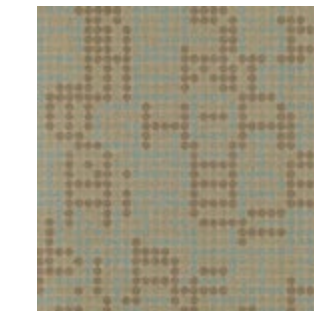
BLP0-97-87-68 EMO



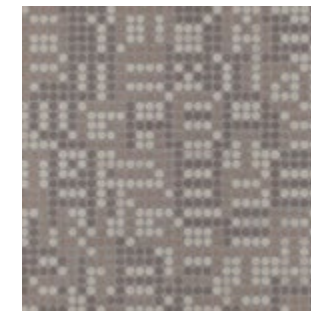
BLP108-119-79-118 ALL-NIGHTER



BLP48-108-53-107 PREP



BLP45-64-101-39 HIPSTER



BLP48-79-44-108 NIRVANA



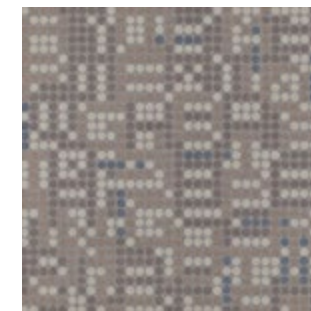
BLP03-118-97-48 GREY MATTER



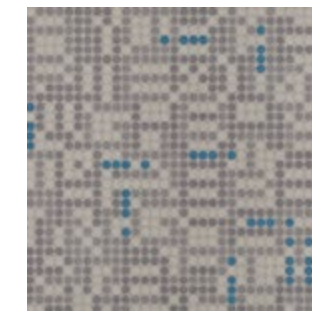
BLP48-52-108-119 INDIE



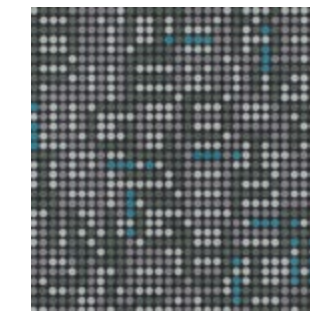
BLP04-89-87-54 FREUDIAN SLIP



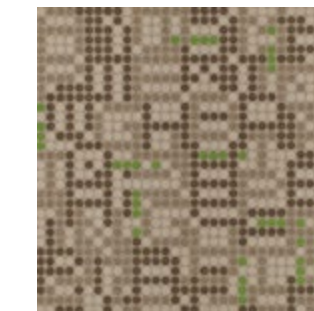
BLP138-79-44-108 NIRVANA WITH PERIWINKLE



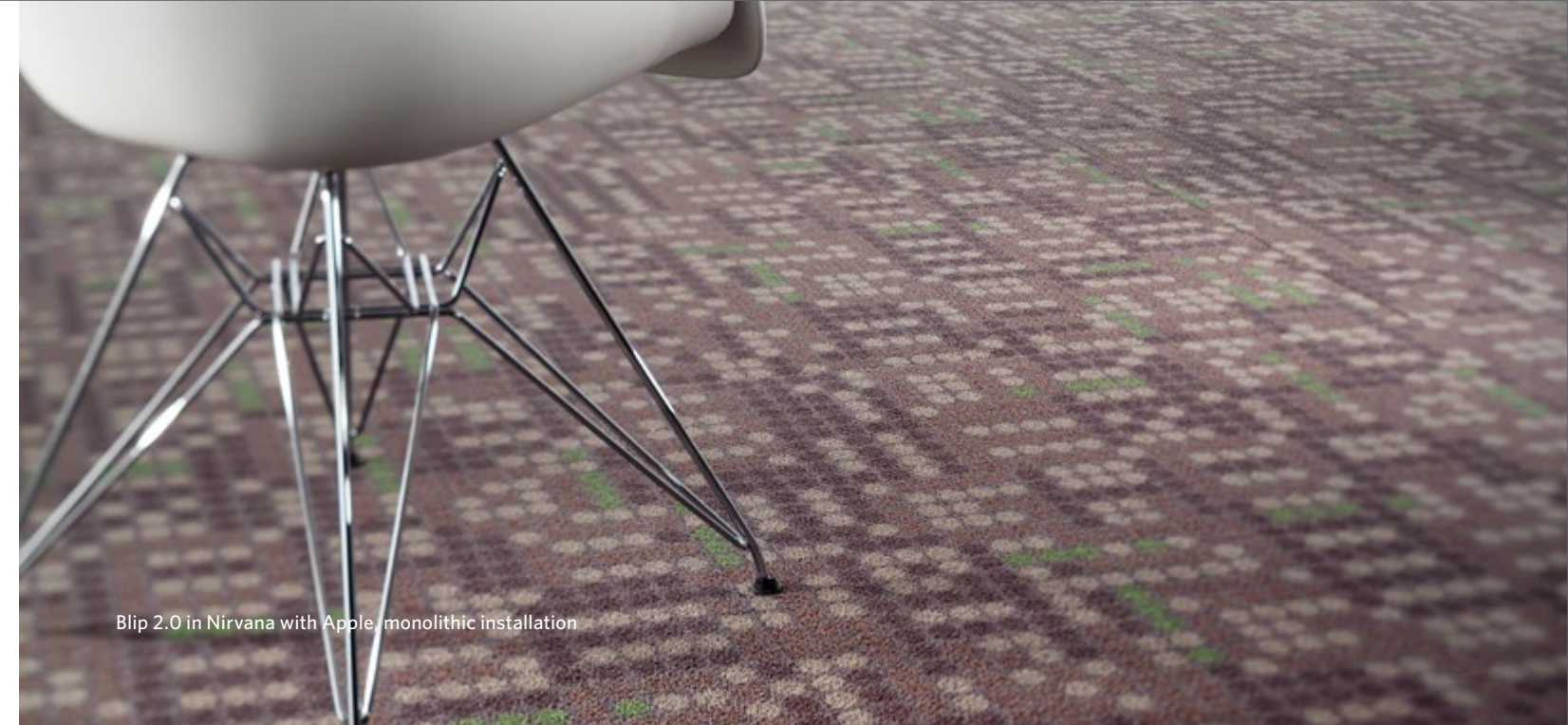
BLP126-118-97-48 GREY MATTER WITH FRENCH BLUE



BLP140-108-53-107 PREP WITH AZUL



BLP141-89-87-54 FREUDIAN SLIP WITH APPLE



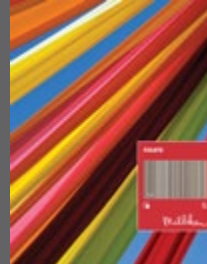
THEORY 2.0

Blip 2.0 / More Blip / Less Blip
Extreme Blip / Stimulus Blip 2.0

Have you seen our other collections? Visit us online today.



Consequence 2.0



Fixate



Remix 2.0



Yarn Storm



Construction

Tufted, Textured Loop

Tile Size

1 m x 1 m (39.4" x 39.4")

Yarn Type

Milliken-Certified WearOn® Nylon
Type 6,6

Stain Repel / Stain Resist / Soil Release

StainSmart®

Tufted Face Weight

20 oz/yd² (678.1 g/m²)

Finished Pile Height

0.11" (2.8 mm)

Average Density

6,583

Standard Backing

PVC-Free Comfort Plus® ES Cushion

Recommended Installation Method



MONOLITHIC



Gold or Platinum Certified
NSF/ANSI 140-2007
Hygienic Food Equipment



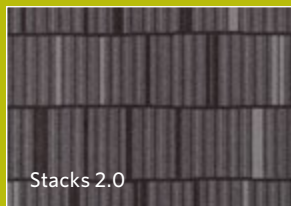
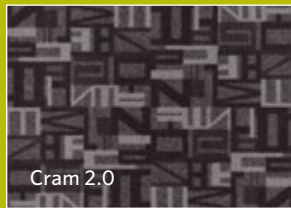
This cushion-back carpet tile product is covered by one or more patents, published applications and/or patents pending. Specifications are subject to normal manufacturing tolerances and may be changed without prior notice.

Growing greener for over 100 years.
Visit milliken.com for more information.

THEORY 2.0

Cram 2.0 / Eureka 2.0

Stacks 2.0 / Quiet Please 2.0



PRICE

Milliken™

$$v = x - \frac{x^3}{3}$$

$$\ln 2 \cdot (2 -$$

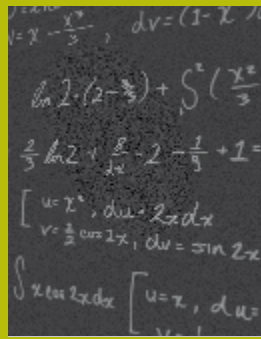
$$\frac{2}{3} \ln 2 + \frac{1}{dx} - 2 - \frac{1}{9} + 1 =$$

$$\left[u = x^2, du = 2x dx \right.$$

$$v = \frac{1}{2} \cos 2x, dv = -\sin 2x$$

$$\int x \cos 2x dx$$

$$\left[u = x, du =$$



INSPIRED. INSPIRING.

Stacks of ideas and contemplative thought bring intrigue and discovery to the floor. From contemporary circle to classic letter form, shapes abound to create a new sense of place. Combinations of modern color bring fun and play to distinguished patterning. Take on a neutral palette or make a bold step with a special vibe. Rational or abstract, it's your theory.



Stacks 2.0 in Graduate, monolithic installation

Theory 2.0 Patterns

There are nine patterns in the Theory 2.0 collection—four are shown in this brochure. For information and images on the additional five patterns (*Blip 2.0*, *More Blip*, *Less Blip*, *Extreme Blip*, and *Stimulus Blip*), please see Volume II of the brochure and architect's folder for the collection.



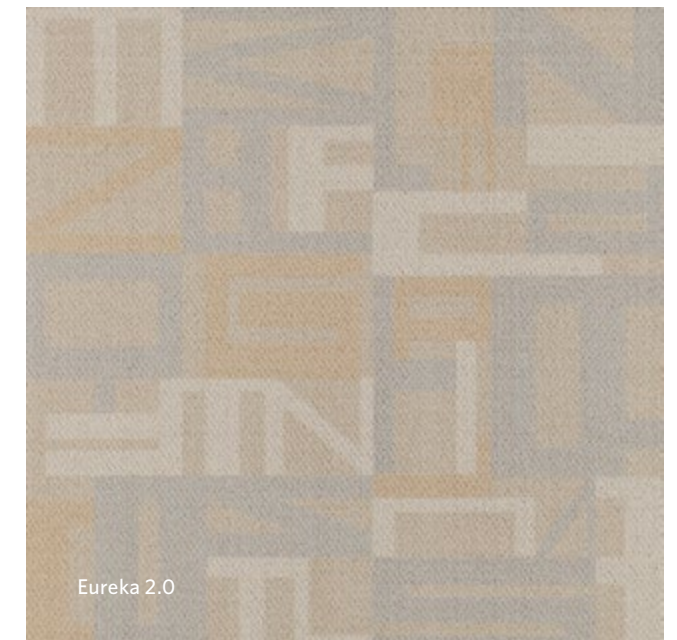
Quiet Please 2.0



Cram 2.0



Stacks 2.0



Eureka 2.0



Quiet Please 2.0 in Graduate, monolithic installation



Get more at millikencarpetsamplestudio.com

Stacks 2.0 in Graduate, monolithic installation



Cram 2.0 in Graduate, monolithic installation



Eureka 2.0 in Graduate, monolithic installation



Stacks 2.0 in Graduate with Star Fruit, Tangerine, and Scarlet (left to right), monolithic installation



Quiet Please 2.0 in Graduate with Tangerine, monolithic installation



Cram 2.0 in Graduate with Tangerine, monolithic installation



Stacks 2.0 in Graduate with Tangerine, monolithic installation



Eureka 2.0 in Graduate with Tangerine, monolithic installation



Eureka 2.0 in Campus Khaki and Cram 2.0 in Campus Khaki with Perwinkle, monolithic installation



Stacks 2.0 in Nirvana with Scarlet and Boysenberry, Quiet Please 2.0 in Nirvana with Boysenberry and Periwinkle, and Stacks 2.0 in Nirvana with Periwinkle (left to right), monolithic installation

VIBE ACCENTS

Each pattern in the Theory 2.0 collection is available in 16 colors. The colors can be used without accents, or you can create a new design with one of eight, high-energy Vibes for an extra pop of color. For inspiration, see examples of possible combinations in the colorline spread.

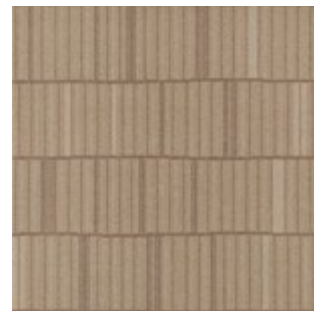


COLORLINE

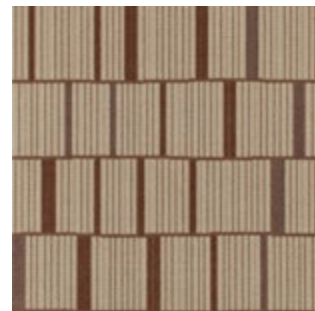
Shown in Stacks 2.0



STK21-65-57-39 GOLDEN RULE



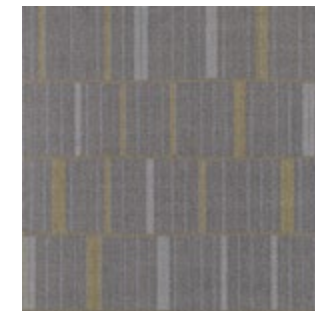
STK15-96-69-81 CAMPUS KHAKI



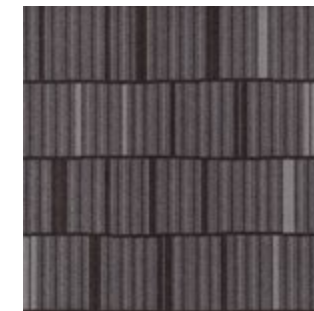
STK77-98-96-39 PLEDGE



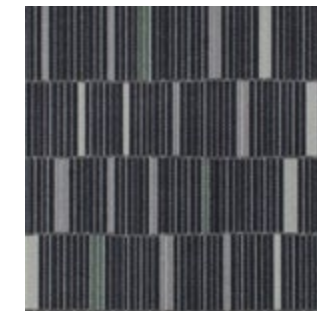
STK37-44-47-96 BROWN NOSE



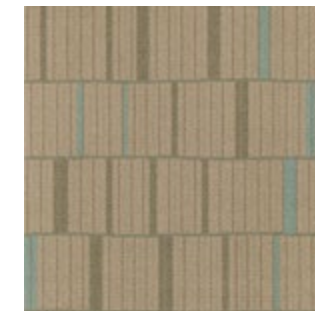
STK0-97-87-68 EMO



STK108-119-79-118 ALL-NIGHTER



STK48-108-53-107 PREP



STK45-64-101-39 HIPSTER



STK21-48-105-15 GRADUATE



STK03-69-81-15 FRESHMAN



STK03-97-44-15 SUEDE BUCKS



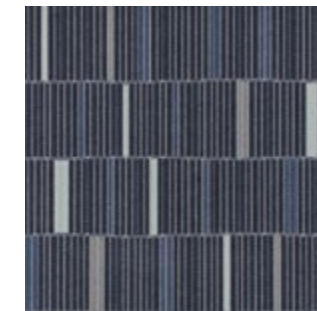
STK48-47-96-44 TWEED COAT



STK48-79-44-108 NIRVANA



STK03-118-97-48 GREY MATTER



STK48-52-108-119 INDIE



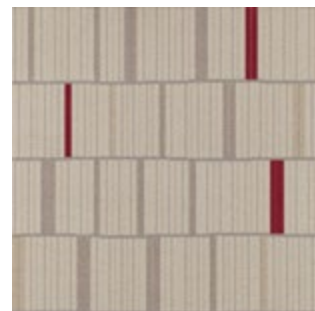
STK04-89-87-54 FREUDIAN SLIP



STK134-65-57-39 GOLDEN RULE WITH STAR FRUIT



STK135-69-81-15 FRESHMAN WITH TANGERINE



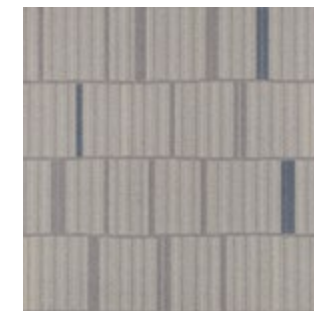
STK109-97-44-15 SUEDE BUCKS WITH SCARLET



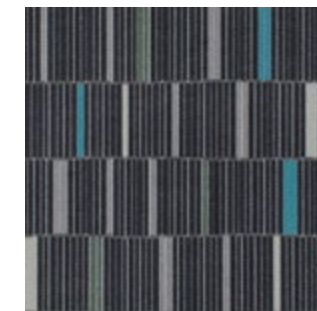
STK137-44-47-96 BROWN NOSE WITH BOYSENBERRY



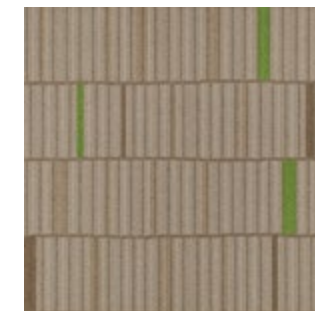
STK138-79-44-108 NIRVANA WITH PERIWINKLE



STK126-118-97-48 GREY MATTER WITH FRENCH BLUE



STK140-108-53-107 PREP WITH AZUL



STK141-89-87-54 FREUDIAN SLIP WITH APPLE



VIBE ACCENTS

Each pattern in the Theory 2.0 collection is available in 16 colors. The colors can be used without accents, or you can create a new design with one of eight, high-energy Vibes for an extra pop of color. For inspiration, see examples of possible combinations in the colorline spread.



COLORLINE

Shown in Eureka 2.0



EUR21-65-57-39 GOLDEN RULE



EUR15-96-69-81 CAMPUS KHAKI



EUR77-98-96-39 PLEDGE



EUR37-44-47-96 BROWN NOSE



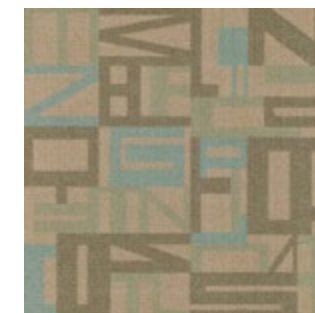
EURO-97-87-68 EMO



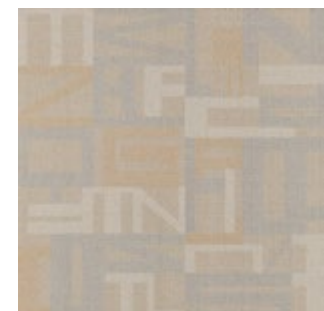
EUR108-119-79-118 ALL-NIGHTER



EUR48-108-53-107 PREP



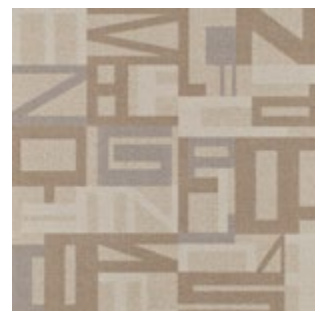
EUR45-64-101-39 HIPSTER



EUR21-48-105-15 GRADUATE



EURO3-69-81-15 FRESHMAN



EURO3-97-44-15 SUEDE BUCKS



EUR48-47-96-44 TWEED COAT



EUR48-79-44-108 NIRVANA



EURO3-118-97-48 GREY MATTER



EUR48-52-108-119 INDIE



EUR04-89-87-54 FREUDIAN SLIP



EUR21-65-57-134 GOLDEN RULE WITH STAR FRUIT



EURO3-69-81-135 FRESHMAN WITH TANGERINE



EURO3-97-44-109 SUEDE BUCKS WITH SCARLET



EUR37-44-47-137 BROWN NOSE WITH BOYSENBERRY



EUR48-79-44-138 NIRVANA WITH PERIWINKLE



EURO3-118-97-126 GREY MATTER WITH FRENCH BLUE



EUR48-108-53-140 PREP WITH AZUL



EUR04-89-87-141 FREUDIAN SLIP WITH APPLE



THEORY 2.0

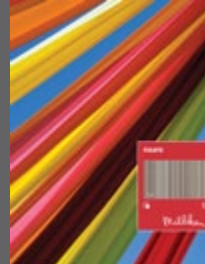
Cram 2.0 / Eureka 2.0

Stacks 2.0 / Quiet Please 2.0

Have you seen our other collections? Visit us online today.



Consequence 2.0



Fixate



Remix 2.0



Yarn Storm



Construction

Tufted, Textured Loop

Tile Size

1 m x 1 m (39.4" x 39.4")

Yarn Type

Milliken-Certified WearOn® Nylon
Type 6,6

Stain Repel / Stain Resist / Soil Release

StainSmart®

Tufted Face Weight

20 oz/yd² (678.1 g/m²)

Finished Pile Height

0.11" (2.8 mm)

Average Density

6,583

Standard Backing

PVC-Free Comfort Plus® ES Cushion

Recommended Installation Method



MONOLITHIC



Gold or Platinum Certified
NSF/ANSI 140-2007
Internationally Certified Performance



This cushion-back carpet tile product is covered by one or more patents, published applications and/or patents pending. Specifications are subject to normal manufacturing tolerances and may be changed without prior notice.

Growing greener for over 100 years.

Visit milliken.com for more information.