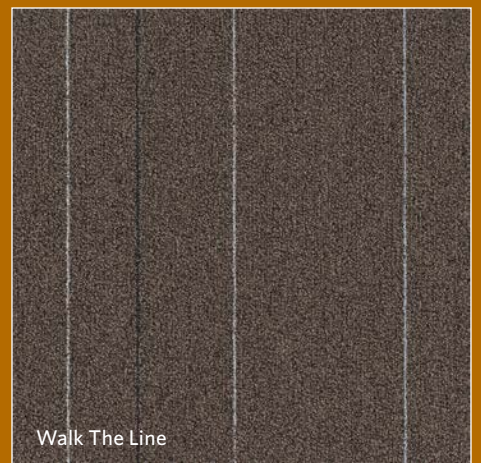




WALK THE LINE



Walk The Line



Milliken™



INSPIRED. INSPIRING.

Roadway or speedway, some find the road's straight path to be friendly. Others feel confined having to remain between the lines. Obey the rules or find your freedom with the Walk The Line collection. Neutral and graphic or fast and furious with a splash of color, this balance of vivid color and grounded background are sure to inspire the journey ahead.



Walk The Line in Las Vegas, ashlar tile installation

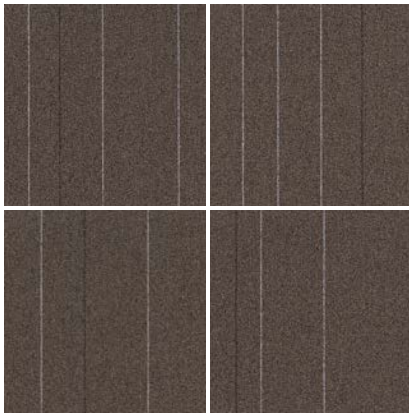


Walk The Line in Folsom (*left*) and Nickajack Cave (*right*), ashlar tile installation

Get more at millikencarpetsamplestudio.com



Walk The Line in (bottom to top) Huntsville, Clinch Mountain with Formwork in Pillar, Maces Spring with Formwork in Gable, Nickajack Cave with Formwork in Pitch, ashlar tile installation



4 Tile Repeat

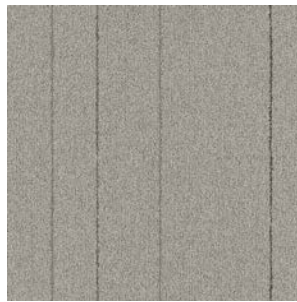
Walk The Line's large pattern repeat consists of four different tiles per colorway, adding variation throughout a project and allowing each installation to be unique. Production orders will receive a random percentage of each of the four tiles in the pattern. Final percentages shipped will vary slightly, within manufacturing tolerances. The tiles are not labeled but can be visually sorted.

Due to inadvertent pattern creation during the installation process, it is recommended that the installation be overseen by a specifier or design professional to ensure satisfaction with the final visual.

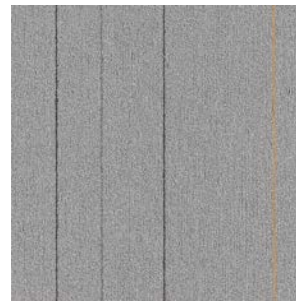
Example: All four tiles in color El Paso



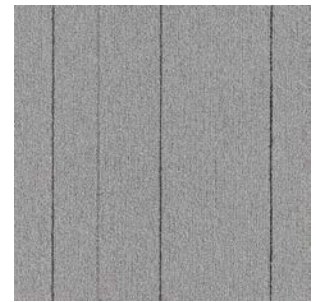
WTL141-171 LOS PADRES



WTL13-171 FRANKLIN



WTL134-108 HUNTSVILLE



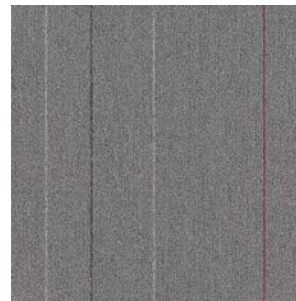
WTL118-108 PALM DESERT



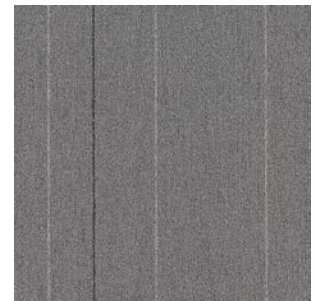
WTL135-122 AMARILLO



WTL13-122 LOUISVILLE



WTL137-13 STARKSVILLE



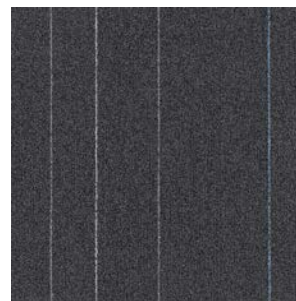
WTL108-13 CLINCH MOUNTAIN



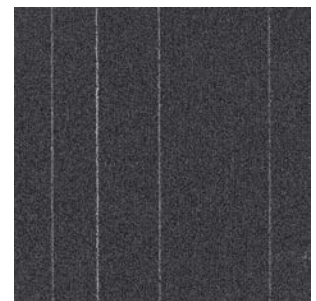
WTL109-120 LAS VEGAS



WTL122-120 MEMPHIS



WTL126-119 SAN QUENTIN



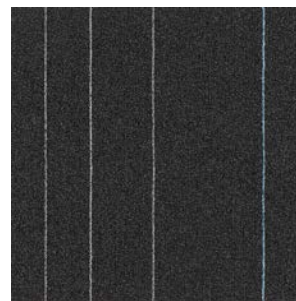
WTL13-119 MACES SPRING



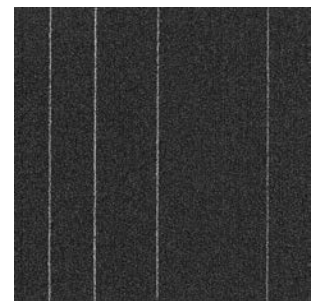
WTL138-59 EL PASO



WTL13-59 KNOXVILLE



WTL140-27 FOLSOM



WTL152-27 NICKAJACK CAVE

WALK THE LINE

Have you seen our other collections? Visit us online today.



Art Media



Nordic Stories



Inis Mór



Pen & Ink



Construction

Tufted, Loop

Tile Size

50 cm x 50 cm (19.7" x 19.7")

Yarn Type

Universal® Fibers SDN Type 6,6

Stain Repel & Resist / Soil Release

StainSmart®

Tufted Face Weight

18 oz/yd² (610.3 g/m²)

Finished Pile Height

0.10" (2.5 mm)

Average Density

6,300

Standard Backing

PVC-Free Underscore™ ES Cushion

Underscore™ is available with TractionBack®

Texture Appearance Retention

Rating (TARR)

Severe

Recommended Installation Method



ASHLAR

TractionBack®

Simplify your modular installation with Milliken's patented TractionBack®, an innovative backing system that is faster, more cost efficient, and environmentally superior to wet adhesives and peel-and-stick carpet tile.



Growing greener for over 100 years.

This product has a UL® Environment 3rd party verified Environmental Product Declaration (EPD). A copy of the EPD is available online at millikencarpet.com/epd and productguide.ulenvironment.com.

Customer Concierge 800.824.2246 | millikencarpet.com
© 2014 Milliken & Company | Made in the USA

Cover image: CA21959, by Ron Chapple.
© 2013 Getty Images

2710022838
CP 0314