

### Front view

The Classica 3665 is a sustainable LED luminaire for urban lighting applications, including pedestrian plazas, residential streets and collector roads. Featuring a traditional lantern design, the luminaire can be further customized, with a choice of outputs, color temperatures and finishes.

<b>Output (module lumens)</b>	3000lm (30W, 1 LED module), 6000lm (60W, 2 LED modules), 9000lm (90W, 3 LED modules), 12000lm (120W, 4 LED modules)
<b>Color and Color Temperature</b>	3000K, 4000K, 5000K
<b>Distributions</b>	Type II, Type III, Type IV, Type VS
<b>Warranty</b>	5-year limited warranty

<b>Color Rendering</b>	70+
<b>Lumen Maintenance</b>	L70 @ 70,000 hrs (25 °C)

<b>Housing Material</b>	Injection moulded aluminum, Moulded aluminum
<b>Finial material</b>	Moulded aluminum, Spun aluminum
<b>Holder material</b>	Moulded aluminum, Extruded Aluminum tubes , Stainless steel set screws
<b>Lens Material</b>	Clear or pond UV stabilized acrylic or clear tempered glass
<b>Hardware Material</b>	Stainless steel
<b>Weight</b>	45 lbs
<b>EPA</b>	3.06 sq ft

Electrical and control

Voltage	120 volts, 240 volts, 277 volts, 347 volts
Control	On/Off control
Connectors	IP67 rated LED quick connectors for quick and easy maintenance (PVC)
Power consumption	30W-120W (30W per LED module)
LED Driver	Electronic LED Driver — 24V DC

Environmental

Environment	Dry / damp / wet location
-------------	---------------------------

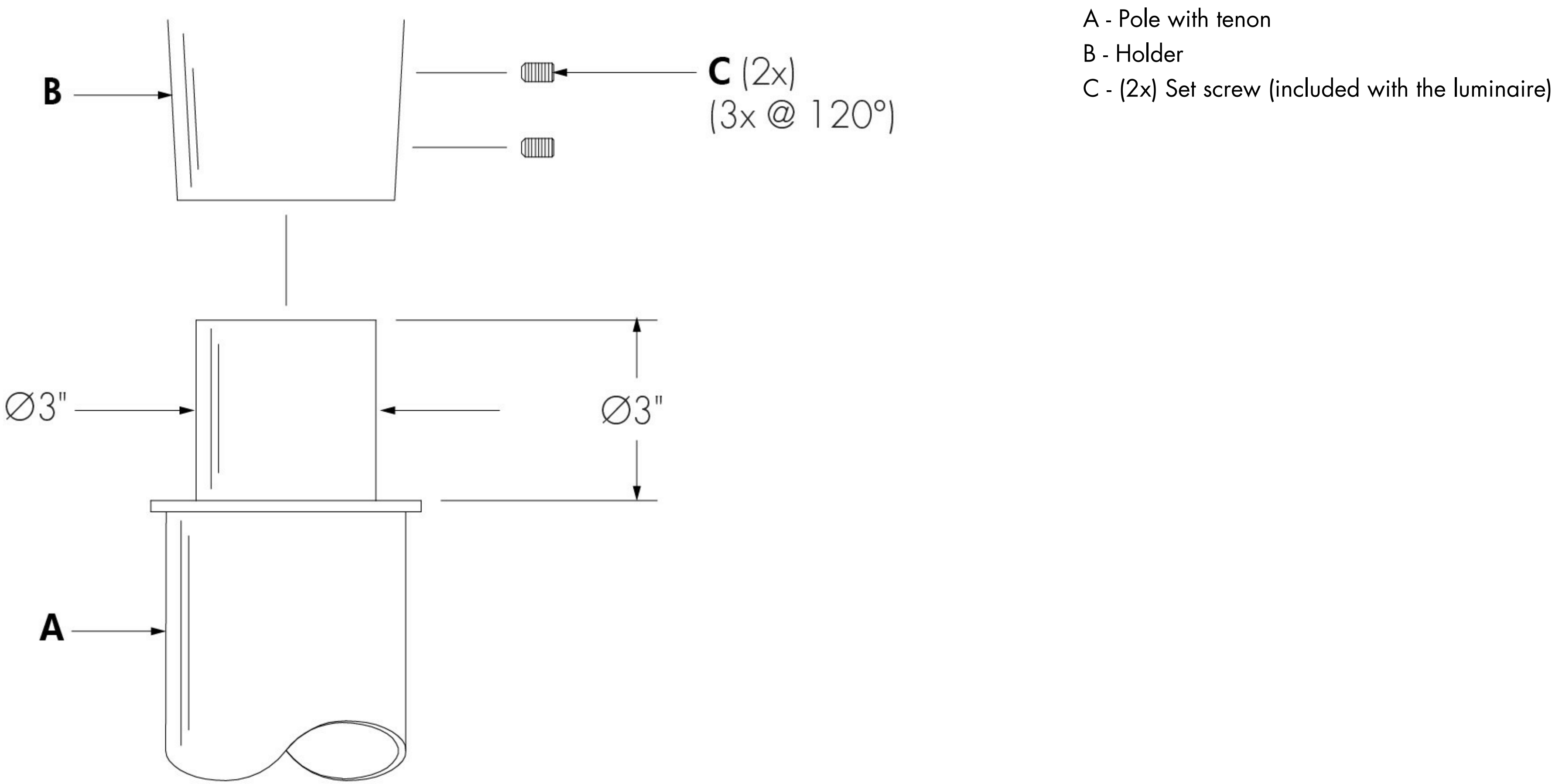
Ratings

Photoelectric cell and driver	ANSI/UL, CSA
-------------------------------	--------------

Decorative arms (order separately, consult related specification sheets for details)

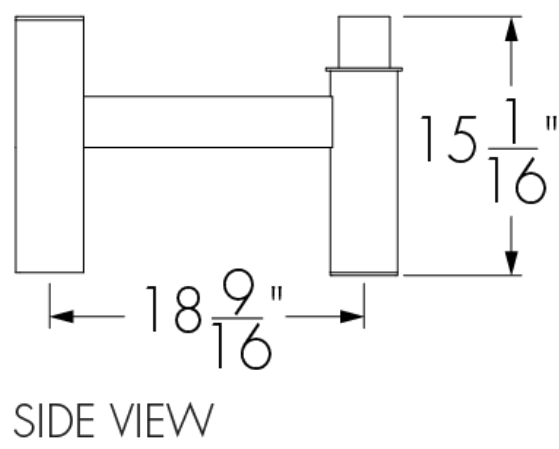
Compatible decorative arms	DT1, MC1, MC2, MC3, MC4 decorative arms
----------------------------	---

Assembly details

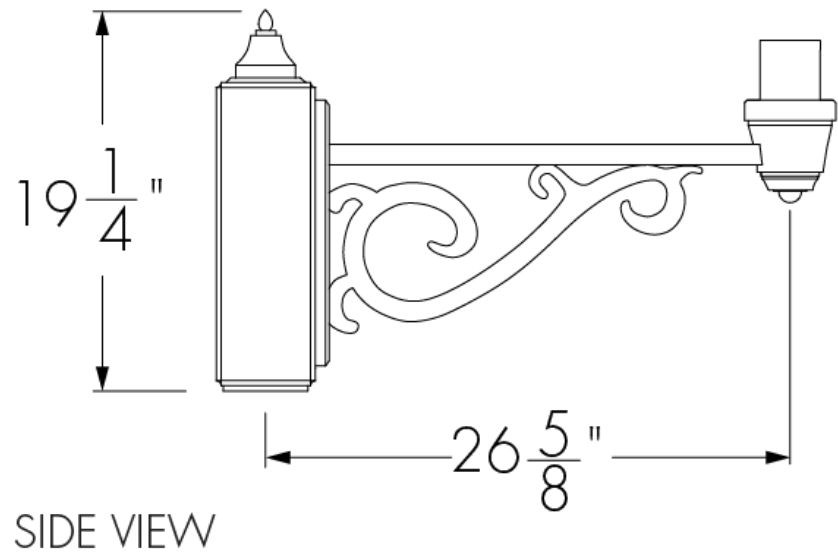


Compatible decorative arms (consult related specification sheets for details)

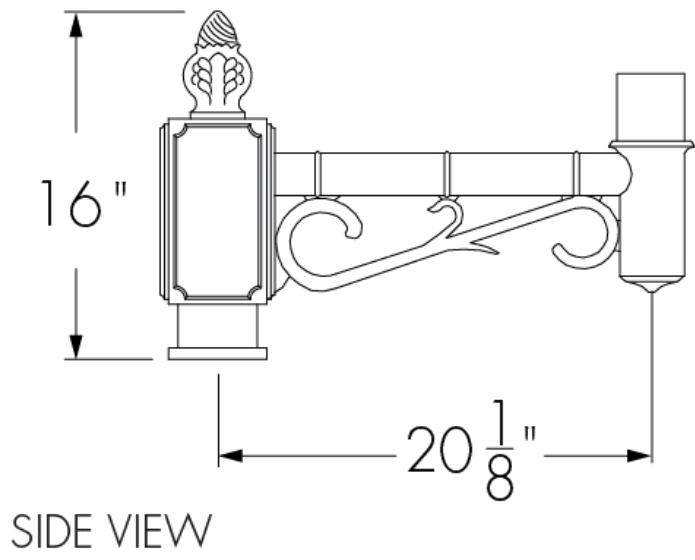
DT1 decorative arm



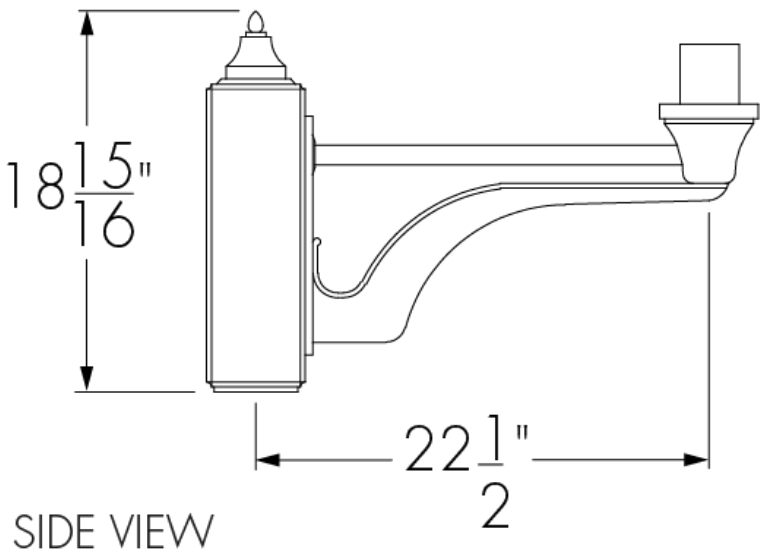
MC1 decorative arm



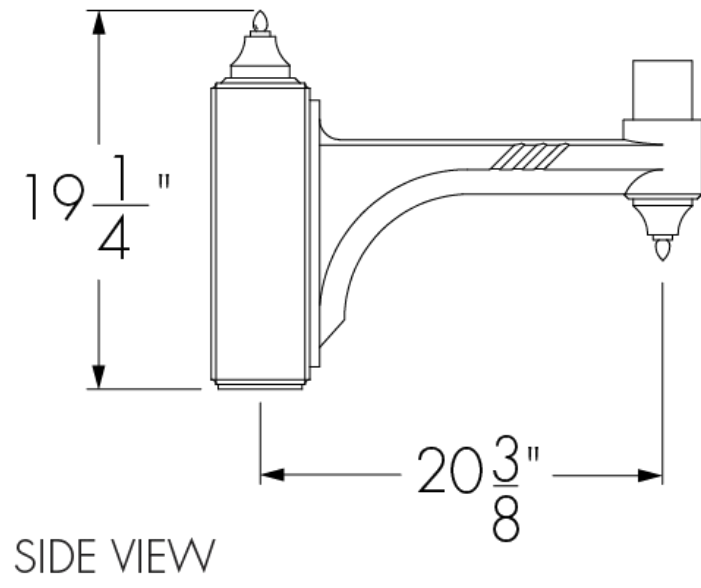
MC2 decorative arm



MC3 decorative arm



MC4 decorative arm



How to order

Submitted on \_\_\_\_\_ for    ☐ Information    ☐ Approval

Other(s)

Project: \_\_\_\_\_

Distribution: \_\_\_\_\_

Your order #: \_\_\_\_\_

Representative: \_\_\_\_\_

Our order #: for lumenpulse use \_\_\_\_\_

IMPORTANT NOTICE Lumenpulse assumes no responsibility for problems that may occur when combining third-party products.

1	2	3	4	5	6	7	8

1 . Housing <sup>(1)</sup>

CLA3665	Classica 3665
---------	---------------

2 . Voltage

120	120 volts
240	240 volts
277	277 volts
347	347 volts

3 . Output (module lumens)

L30	3000lm (30W, 1 LED module)
L60	6000lm (60W, 2 LED modules)
L90	9000lm (90W, 3 LED modules)
L120	12000lm (120W, 4 LED modules)

4 . Color and Color Temperature

30K	3000K
40K	4000K
50K	5000K

5 . Distributions

2	Type II
3	Type III
4	Type IV
5S	Type VS

6 . Lens

CAL	Clear acrylic lens
CLG	Clear tempered glass lens
PA	Pond acrylic lens

7 . Finish

BK	Black Sandtex®
BRZ	Bronze Sandtex®
SI	Silver Sandtex®
BKTX	Textured black
BRZTX	Textured bronze non-metallic
GRATX	Textured medium gray
GRNTX	Textured green
WHTX	Textured white
CC	Custom color and finish (please specify RAL color) <sup>(2)</sup>

8 . Control

NO	On/Off control
----	----------------

Notes:

<sup>(1)</sup> Consult factory for availability.

<sup>(2)</sup> For custom RAL colors, specify RAL number followed by "TX" for textured finish (ex: RAL9007TX). A textured finish is recommended for ease of maintenance of all products. Please consult factory for other RAL textures and glosses, or to match alternate color charts. Final color matching results may vary.