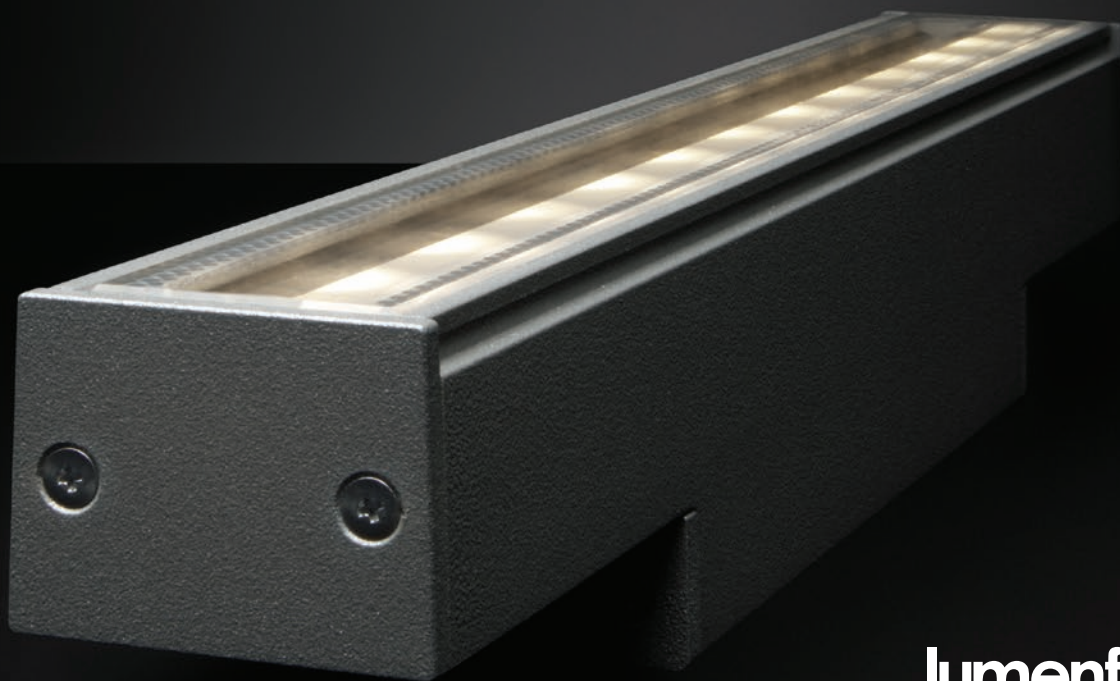


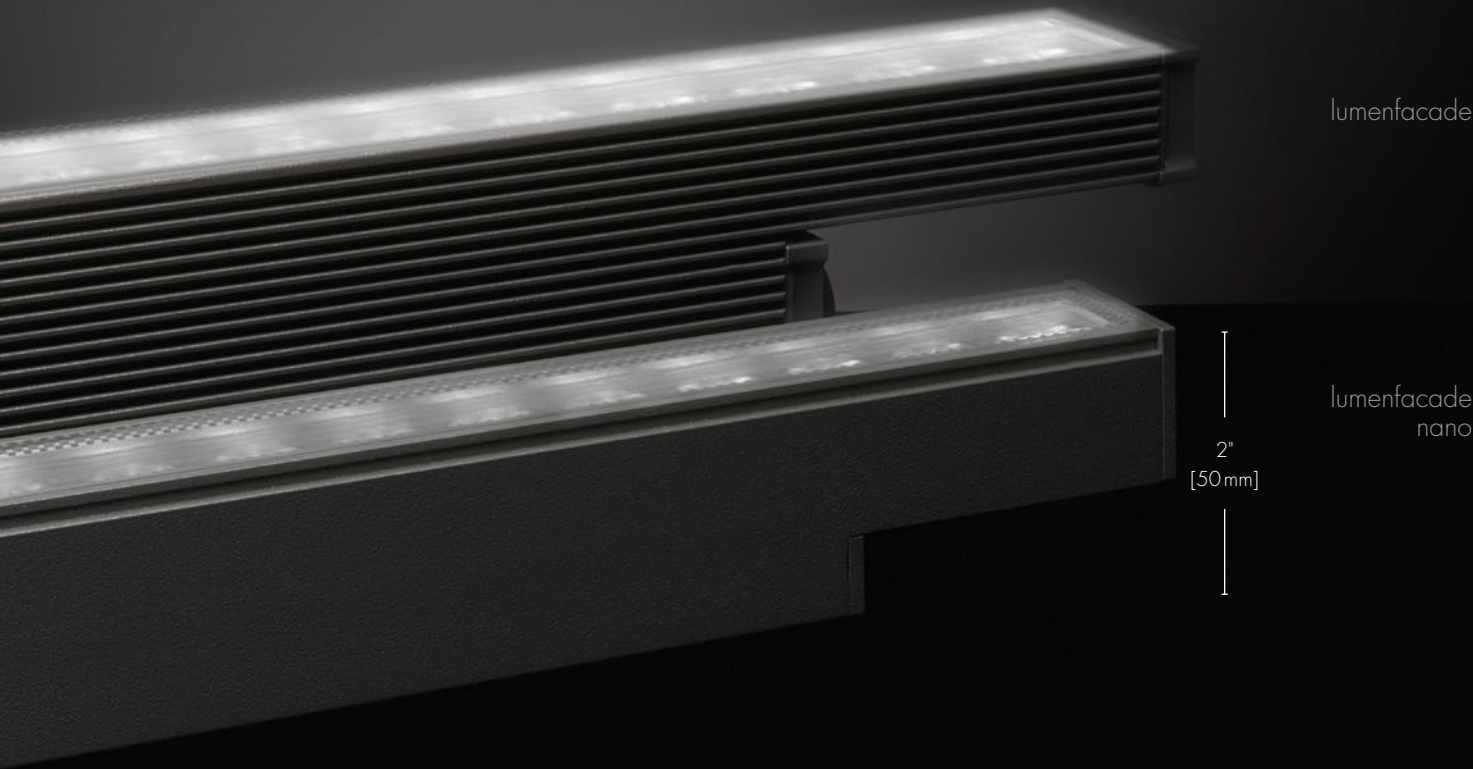
lumenpulse™



lumenfacade™
nano

Form factor

Lumenfacade Nano expands on the solid reputation of a tried and true classic. The new smaller, sleeker Lumenfacade Nano is designed with clean lines and pure aesthetics and has been optimized for maximum performance with minimal visibility in low-scale applications.



Product index

lumenfacade™ nano

Exterior



Nano



Nano horizontal

Interior



Nano interior



Nano horizontal interior

Not just a pretty face

Once upon a time, only landmark projects budgeted for facade lighting. Offering a wealth of possibilities for architectural and commercial applications, the new Lumenfacade Nano can enhance every architecture, all the while hiding in plain sight. Now, every commercial building can afford professional facade lighting.

The Lumenfacade Nano was designed with lighting designers in mind:

- A compact form factor that is easily integrated with any architecture
- Performances geared towards low-scale architecture
- An affordable solution for any sized project
- Clean aesthetics to blend with a multitude of designs
- Architecturally attuned mounting and optical accessories



Punches above its weight

Don't be fooled. Its compact form by no means limits the power and performance of the Lumenfacade Nano (up to 41,352 cd). The Nano has an unparalleled performance for a 4W/ft. fixture. You can achieve up to 110 delivered lumens per watt, which is enough to send 1 fc of light up to 203 ft. This is a comparable delivery to the Lumenfacade RO, but using only half the wattage. The 15 optical distribution choices for the Nano include a wallwash optic, which achieves a uniformity of <3.7:1 with an average illuminance of 18 fc.

Up to
41,352 cd
1 fc at a distance of 203 ft.

Up to 110lm/W

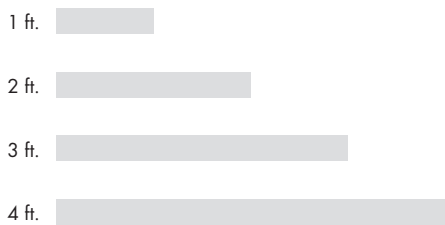
LOGN, 8" x 8", 4 ft., 4000K

Statue of Liberty, 151 ft.

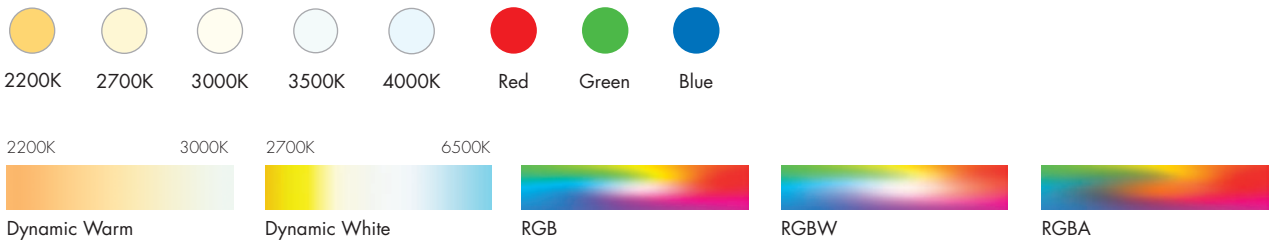
Light that keeps on giving

The multi-faceted Lumenfacade Nano showcases Lumenpulse’s unparalleled approach to facade lighting. Easily configurable, this luminaire will grant you a toolbox brimming with features and solutions. With over 4,000,000 possible configurations, you can select between a variety of lengths, CCTs, and dynamic offering, tailoring the Nano to fit your design needs and to integrate seamlessly with the architecture.

Lengths¹



Colors and color temperatures



Controls

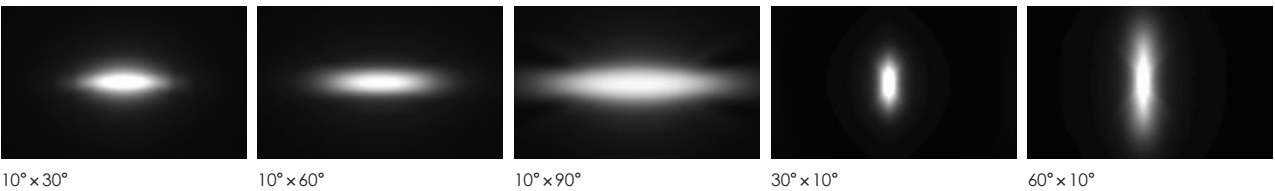
ON/OFF 0-10V DMX/RDM **D_{Tw}**

Certifications

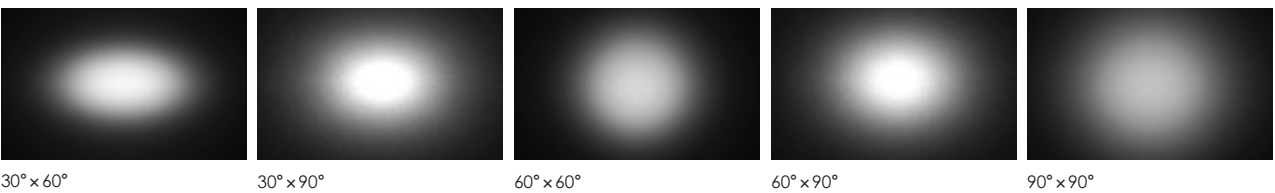


¹ Nominal lengths.

Graze



Flood



Accent / Spot



Wallwash



Wide



Meet **lumengrid**™

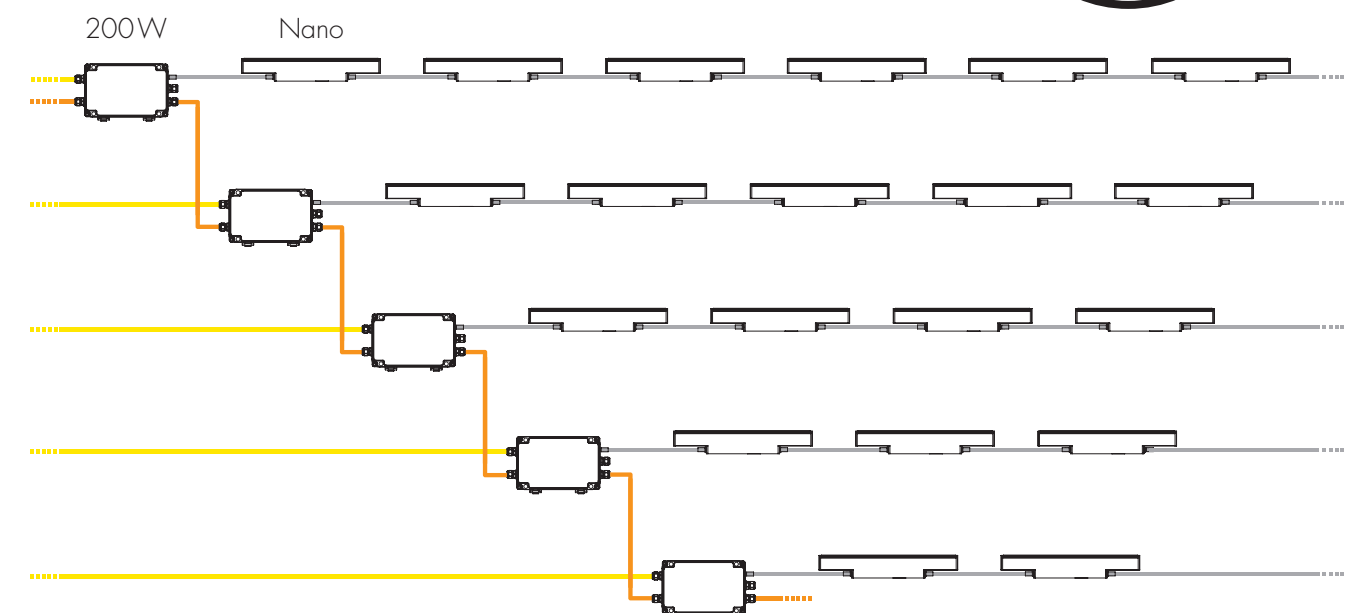
Easy. Affordable. Sustainable.

Lumengrid advantages:

- Simple and fast to install, set up and maintain.
- Reduces cost and complexity of initial installation and commissioning, as well as future operating and maintenance.
- Optimized power conversion and thermal management, which boosts lifetime, efficacy, and energy performance.

Lumengrid lets you create highly scalable projects by daisy chaining your data through a nearly unlimited number of luminaires.

Up to
76 ft. run length
2W/ft. fixture



Line voltage*
Data*
Single Lumengrid quick connect integrated power and data cable

*By others



Benefits

Sustainable longevity

There's no need to waste fixtures because of the weakest link. Simply and easily replace the power supply.

System scalability

Create highly scalable projects by daisy chaining your data through a nearly unlimited number of luminaires.

Power efficiency

AC/DC power conversion is efficiently done only once in the control box so system efficacy is optimized and maintenance is reduced.

Control flexibility

Lumengrid turns any 0-10V control into a dynamic DMX/RDM control, giving you more options for your design while keeping you under budget.

Wiring simplicity

All you need to do is select the cable length. We supply a single quick connect cable that integrates power and data which speeds up and simplifies installation.

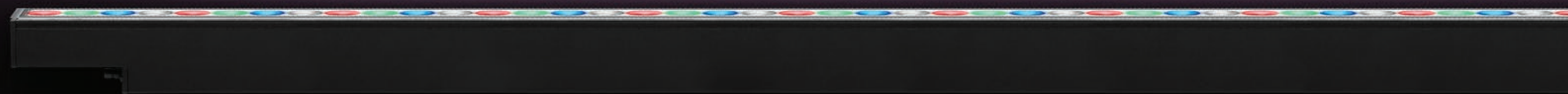
A long life
with minimum
maintenance

Scalable. Flexible. Simple.

Dynamic Solutions

Enjoy harmonized CCT and dynamic colors across every Lumenpulse family. The Lumenfacade Nano is dynamic lighting at its best.

Thanks to Lumengrid, your project can enjoy the benefits of color changing and dynamic white lighting.



Fast is even faster and foolproof

The Lumenfacade Nano optical accessories are a natural extension of its design. The tool-free installation of accessories lets you add louvers or visors on-site.

- The Lumenfacade Nano's installation process is reliably simple. There's a specialized mounting system for every architecture.
- The Lumenfacade Nano's quick-joining system simplifies installation, allowing instant seamless connection.
- It's literally a snap to install and to daisy chain luminaires.
- Ordering is foolproof. With only one type of fixture cable for all your needs, miswiring is a thing of the past.



**Tool-free
installation**



Hiding in plain sight

Nothing says "perfect fit" like the Lumenfacade Nano. No matter where you want it, no matter what the project, there's a Nano designed especially for you.

Benefits



Control



Single cable type



Economical



Dynamic options

Control

There should be no lighting without lighting control. The Lumenfacade Nano turns your 0-10V signal into controllable DMX/RDM through Lumengrid.

Highly scalable

There is a size, color, optic and output for every project imaginable and even for those projects you've yet to imagine.

Form factor

The Lumenfacade Nano's compact form factor makes it able to squeeze into any architecture's nooks and crannies while easily being hidden from the prying eyes of passersby.

Economical

Use as many fixtures as needed to illuminate your project. Thanks to a small size and low power consumption, you can light your entire project without your budget seeing red.





**Sales Offices and
Manufacturing Facilities**

Corporate Headquarters

1220 Marie-Victorin Blvd.
Longueuil, QC
J4G 2H9 Canada

T +1.877.937.3003
T +1.514.937.3003
F +1.514.937.6289

Boston, United States

10 Post Office Square, Suite 900
Boston, MA
02109 United States

T +1.877.937.3003
T +1.617.307.5700
F +1.617.350.9912

