

Front view

Description

The Nautica 8100 is a durable, high-performance LED luminaire for nautical and marine environments, including boardwalks, piers, docks, lakeside promenades and seaside parks. Featuring a nautical design, the wall-mounted luminaire is endlessly scalable, with a choice of outputs, colour temperatures, finishes, and colours.

Features

Output (module lumens)	2540lm (30W, 1 LED module)
Colour and Colour Temperature	3000K, 4000K, 5000K
Distributions	Type I, Type II, Type III, Type VS
Options	Photoelectric cell button type, Surge protector
Warranty	5-year limited warranty

Performance

Colour Rendering	70+
Lumen Maintenance	L70 @ 70,000 hrs (25 °C)

Physical

Housing Material	Moulded 356 aluminium alloy , Extruded Aluminium tubes
Cage material	Cast aluminium and extrusion
Louvre material	Heavy gauge spun aluminium
Lens Material	Thermoformed clear UV stabilised acrylic
Hardware Material	Stainless steel
Weight	7.48 kg
EPA	0.05 sq m

Electrical and control

Voltage	120 volts, 240 volts, 277 volts, 347 volts
Control	On/Off control
Connectors	IP67 rated LED quick connectors for quick and easy maintenance (PVC)
Power consumption	30W or 53W
LED Driver	Electronic LED Driver (700 mA)

Environmental

Environment	Dry / damp / wet location
-------------	---------------------------

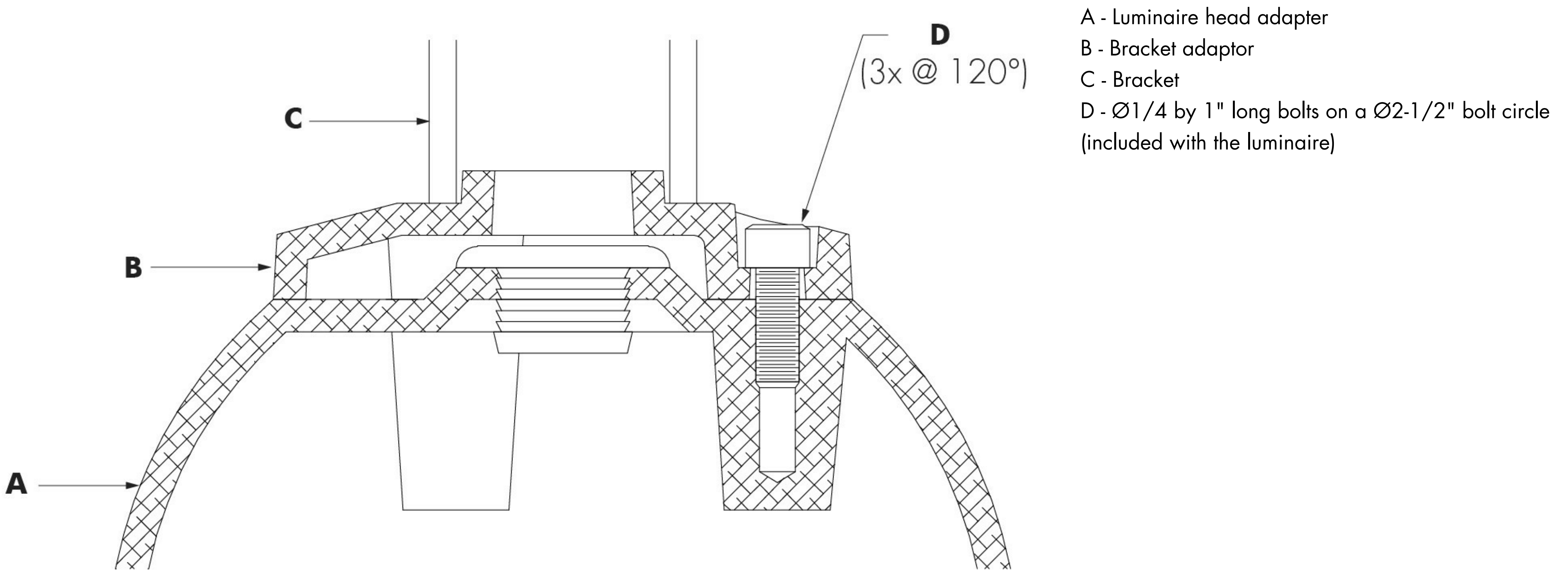
Ratings

Photoelectric cell and driver	ANSI/UL, CSA
-------------------------------	--------------

Accessories (order separately)

Mounting accessory (order separately)	Decorative arm CM0, Decorative arm DM0
---------------------------------------	--

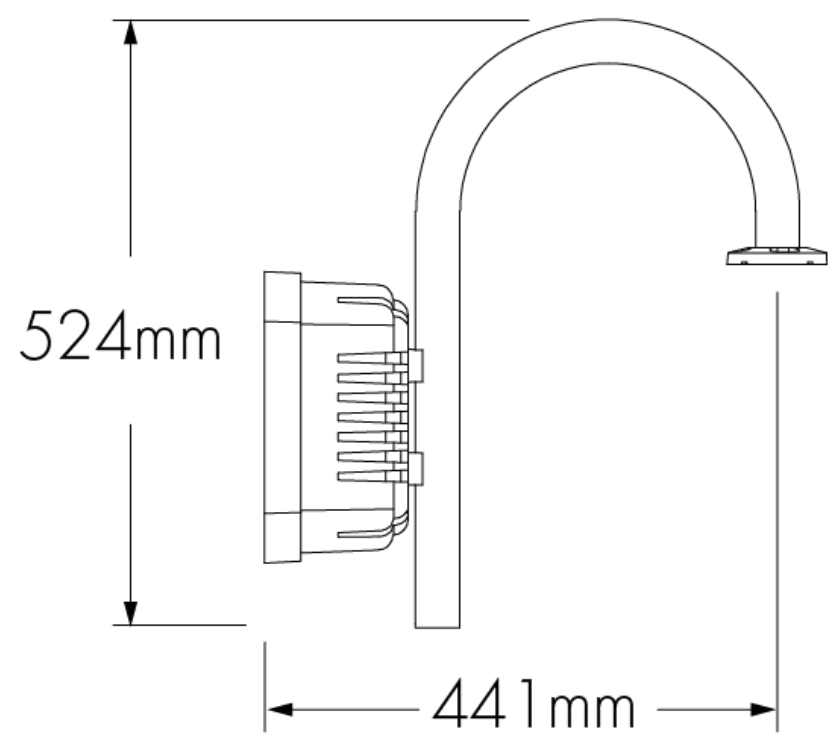
Assembly details



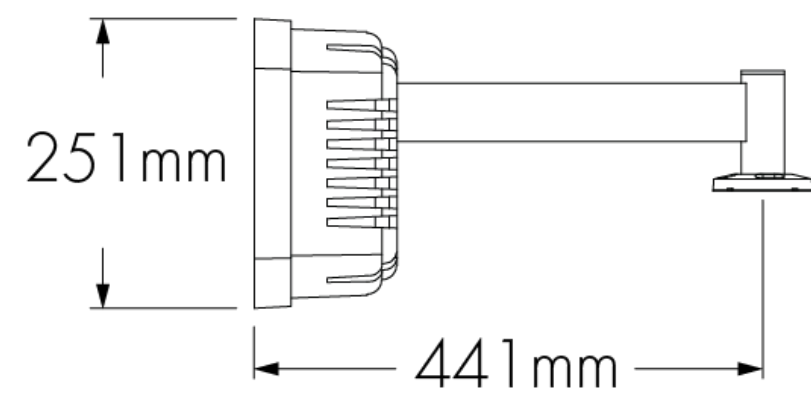
Accessories (order separately)

Mounting accessory (order separately)

CM0-Decorative arm CM0



DM0-Decorative arm DM0



How to order

Submitted on _____ for ☐ Information ☐ Approval

Other(s)

Project: _____

Distribution: _____

Your order #: _____

Representative: _____

Our order #: for lumenpulse use _____

IMPORTANT NOTICE Lumenpulse assumes no responsibility for problems that may occur when combining third-party products.

1	2	3	4	5	6	7	8
B 5I , %\$\$							

1 . Housing ⁽¹⁾

NAU8100	Nautica 8100
---------	--------------

2 . Voltage

120	120 volts
240	240 volts
277	277 volts
347	347 volts

3 . Output (module lumens)

L25	2540lm (30W, 1 LED module)
-----	----------------------------

4 . Colour and Colour Temperature

30K	3000K
40K	4000K
50K	5000K

5 . Distributions

1	Type I
2	Type II
3	Type III
5S	Type VS

6 . Finish

BK	Black Sandtex®
BRZ	Bronze Sandtex®
SI	Silver Sandtex®
BKTX	Textured black
BRZTX	Textured bronze non-metallic
GRATX	Textured medium grey
GRNTX	Textured green
WHTX	Textured white
CC	Custom colour and finish (please specify RAL colour) ⁽²⁾ ⁽³⁾

7 . Control ⁽⁴⁾

NO	On/Off control
----	----------------

8 . Options

PB	Photoelectric cell button type
SP	Surge protector

Notes:

⁽¹⁾ Consult Related Products section on webpage for a selection of compatible decorative arms (sold separately).

⁽²⁾ For custom RAL colours, specify RAL number followed by “TX” for textured finish (ex: RAL9007TX). A textured finish is recommended for ease of maintenance of all products. Please consult factory for other RAL textures and glosses, or to match alternate colour charts. Final colour matching results may vary.

⁽³⁾ Longer lead times can be expected for custom RAL colour finishes.

(4) Consult factory for dimming options.