

BKSL
RECESSED UPLIGHT

the power of 

MINI-MICRO™ RECESSED UPLIGHT

PROJECT:	
TYPE:	
CATALOG NUMBER:	
SOURCE:	
NOTES:	

CATALOG NUMBER LOGIC

	<div>UL</div>		<div>MM</div>	<div>LED</div>														
Example	-	UL	-	F	-	MM	-	LED	-	e70	-	SP	-	BLP	-	12	-	11

Material	Blank - Aluminum B - Brass S - Stainless Steel																																																																								
Series	UL - Recessed Uplight																																																																								
Installation	F - Flush mount S - Surface mount																																																																								
Fixture	MM - Mini-Micro™																																																																								
Source	LED - 'e' Technology with Integral Driver <i>Designed for use with remote 12VAC BKSSL® transformers.</i>																																																																								
LED Type	e70 - 3WLED/2.7K e71 - 3WLED/3K e72 - 3WLED/4K e73 - 3WLED/Amber																																																																								
Optics*	NSP - Narrow Spot (Red Indicator) SP - Spot (Green Indicator) MFL - Medium Flood (Yellow indicator) ASY - Asymmetrical (Purple Indicator)																																																																								
Finish	<table border="0"> <tr> <td>Aluminum Finish</td> <td>Brass Finish</td> <td>Premium Finish</td> </tr> <tr> <td> <table border="1"> <tr> <th>Powder Coat Color</th> <th>Satin</th> <th>Wrinkle</th> </tr> <tr> <td>Bronze</td> <td>BZP</td> <td>BZW</td> </tr> <tr> <td>Black</td> <td>BLP</td> <td>BLW</td> </tr> <tr> <td>White (Gloss)</td> <td>WHP</td> <td>WHW</td> </tr> <tr> <td>Aluminum</td> <td>SAP</td> <td>—</td> </tr> <tr> <td>Verde</td> <td>—</td> <td>VER</td> </tr> </table> </td> <td> <table border="1"> <tr> <th>Machined</th> <th>MAC</th> </tr> <tr> <td>Polished</td> <td>POL</td> </tr> <tr> <td>Mitique™</td> <td>MIT</td> </tr> </table> </td> <td> <table border="1"> <tr> <th>ABP</th> <td>Antique Brass Powder</td> <th>CMG</th> <td>Cascade Mountain Granite</td> <th>RMG</th> <td>Rocky Mountain Granite</td> </tr> <tr> <th>AMG</th> <td>Aleutian Mountain Granite</td> <th>CRI</th> <td>Cracked Ice</td> <th>SDS</th> <td>Sonoran Desert Sandstone</td> </tr> <tr> <th>AQW</th> <td>Antique White</td> <th>CRM</th> <td>Cream</td> <th>SMG</th> <td>Sierra Mountain Granite</td> </tr> <tr> <th>BCM</th> <td>Black Chrome</td> <th>HUG</th> <td>Hunter Green</td> <th>TXF</th> <td>Textured Forest</td> </tr> <tr> <th>BGE</th> <td>Beige</td> <th>MDS</th> <td>Mojave Desert Sandstone</td> <th>WCP</th> <td>Weathered Copper</td> </tr> <tr> <th>BPP</th> <td>Brown Patina Powder</td> <th>NBP</th> <td>Natural Brass Powder</td> <th>WIR</th> <td>Weathered Iron</td> </tr> <tr> <th>CAP</th> <td>Clear Anodized Powder</td> <th>OCF</th> <td>Old Copper</td> <td colspan="2"><i>Also available in RAL Finishes See submittal SUB-1439-00</i></td> </tr> </table> </td> </tr> </table>	Aluminum Finish	Brass Finish	Premium Finish	<table border="1"> <tr> <th>Powder Coat Color</th> <th>Satin</th> <th>Wrinkle</th> </tr> <tr> <td>Bronze</td> <td>BZP</td> <td>BZW</td> </tr> <tr> <td>Black</td> <td>BLP</td> <td>BLW</td> </tr> <tr> <td>White (Gloss)</td> <td>WHP</td> <td>WHW</td> </tr> <tr> <td>Aluminum</td> <td>SAP</td> <td>—</td> </tr> <tr> <td>Verde</td> <td>—</td> <td>VER</td> </tr> </table>	Powder Coat Color	Satin	Wrinkle	Bronze	BZP	BZW	Black	BLP	BLW	White (Gloss)	WHP	WHW	Aluminum	SAP	—	Verde	—	VER	<table border="1"> <tr> <th>Machined</th> <th>MAC</th> </tr> <tr> <td>Polished</td> <td>POL</td> </tr> <tr> <td>Mitique™</td> <td>MIT</td> </tr> </table>	Machined	MAC	Polished	POL	Mitique™	MIT	<table border="1"> <tr> <th>ABP</th> <td>Antique Brass Powder</td> <th>CMG</th> <td>Cascade Mountain Granite</td> <th>RMG</th> <td>Rocky Mountain Granite</td> </tr> <tr> <th>AMG</th> <td>Aleutian Mountain Granite</td> <th>CRI</th> <td>Cracked Ice</td> <th>SDS</th> <td>Sonoran Desert Sandstone</td> </tr> <tr> <th>AQW</th> <td>Antique White</td> <th>CRM</th> <td>Cream</td> <th>SMG</th> <td>Sierra Mountain Granite</td> </tr> <tr> <th>BCM</th> <td>Black Chrome</td> <th>HUG</th> <td>Hunter Green</td> <th>TXF</th> <td>Textured Forest</td> </tr> <tr> <th>BGE</th> <td>Beige</td> <th>MDS</th> <td>Mojave Desert Sandstone</td> <th>WCP</th> <td>Weathered Copper</td> </tr> <tr> <th>BPP</th> <td>Brown Patina Powder</td> <th>NBP</th> <td>Natural Brass Powder</td> <th>WIR</th> <td>Weathered Iron</td> </tr> <tr> <th>CAP</th> <td>Clear Anodized Powder</td> <th>OCF</th> <td>Old Copper</td> <td colspan="2"><i>Also available in RAL Finishes See submittal SUB-1439-00</i></td> </tr> </table>	ABP	Antique Brass Powder	CMG	Cascade Mountain Granite	RMG	Rocky Mountain Granite	AMG	Aleutian Mountain Granite	CRI	Cracked Ice	SDS	Sonoran Desert Sandstone	AQW	Antique White	CRM	Cream	SMG	Sierra Mountain Granite	BCM	Black Chrome	HUG	Hunter Green	TXF	Textured Forest	BGE	Beige	MDS	Mojave Desert Sandstone	WCP	Weathered Copper	BPP	Brown Patina Powder	NBP	Natural Brass Powder	WIR	Weathered Iron	CAP	Clear Anodized Powder	OCF	Old Copper	<i>Also available in RAL Finishes See submittal SUB-1439-00</i>	
Aluminum Finish	Brass Finish	Premium Finish																																																																							
<table border="1"> <tr> <th>Powder Coat Color</th> <th>Satin</th> <th>Wrinkle</th> </tr> <tr> <td>Bronze</td> <td>BZP</td> <td>BZW</td> </tr> <tr> <td>Black</td> <td>BLP</td> <td>BLW</td> </tr> <tr> <td>White (Gloss)</td> <td>WHP</td> <td>WHW</td> </tr> <tr> <td>Aluminum</td> <td>SAP</td> <td>—</td> </tr> <tr> <td>Verde</td> <td>—</td> <td>VER</td> </tr> </table>	Powder Coat Color	Satin	Wrinkle	Bronze	BZP	BZW	Black	BLP	BLW	White (Gloss)	WHP	WHW	Aluminum	SAP	—	Verde	—	VER	<table border="1"> <tr> <th>Machined</th> <th>MAC</th> </tr> <tr> <td>Polished</td> <td>POL</td> </tr> <tr> <td>Mitique™</td> <td>MIT</td> </tr> </table>	Machined	MAC	Polished	POL	Mitique™	MIT	<table border="1"> <tr> <th>ABP</th> <td>Antique Brass Powder</td> <th>CMG</th> <td>Cascade Mountain Granite</td> <th>RMG</th> <td>Rocky Mountain Granite</td> </tr> <tr> <th>AMG</th> <td>Aleutian Mountain Granite</td> <th>CRI</th> <td>Cracked Ice</td> <th>SDS</th> <td>Sonoran Desert Sandstone</td> </tr> <tr> <th>AQW</th> <td>Antique White</td> <th>CRM</th> <td>Cream</td> <th>SMG</th> <td>Sierra Mountain Granite</td> </tr> <tr> <th>BCM</th> <td>Black Chrome</td> <th>HUG</th> <td>Hunter Green</td> <th>TXF</th> <td>Textured Forest</td> </tr> <tr> <th>BGE</th> <td>Beige</td> <th>MDS</th> <td>Mojave Desert Sandstone</td> <th>WCP</th> <td>Weathered Copper</td> </tr> <tr> <th>BPP</th> <td>Brown Patina Powder</td> <th>NBP</th> <td>Natural Brass Powder</td> <th>WIR</th> <td>Weathered Iron</td> </tr> <tr> <th>CAP</th> <td>Clear Anodized Powder</td> <th>OCF</th> <td>Old Copper</td> <td colspan="2"><i>Also available in RAL Finishes See submittal SUB-1439-00</i></td> </tr> </table>	ABP	Antique Brass Powder	CMG	Cascade Mountain Granite	RMG	Rocky Mountain Granite	AMG	Aleutian Mountain Granite	CRI	Cracked Ice	SDS	Sonoran Desert Sandstone	AQW	Antique White	CRM	Cream	SMG	Sierra Mountain Granite	BCM	Black Chrome	HUG	Hunter Green	TXF	Textured Forest	BGE	Beige	MDS	Mojave Desert Sandstone	WCP	Weathered Copper	BPP	Brown Patina Powder	NBP	Natural Brass Powder	WIR	Weathered Iron	CAP	Clear Anodized Powder	OCF	Old Copper	<i>Also available in RAL Finishes See submittal SUB-1439-00</i>						
Powder Coat Color	Satin	Wrinkle																																																																							
Bronze	BZP	BZW																																																																							
Black	BLP	BLW																																																																							
White (Gloss)	WHP	WHW																																																																							
Aluminum	SAP	—																																																																							
Verde	—	VER																																																																							
Machined	MAC																																																																								
Polished	POL																																																																								
Mitique™	MIT																																																																								
ABP	Antique Brass Powder	CMG	Cascade Mountain Granite	RMG	Rocky Mountain Granite																																																																				
AMG	Aleutian Mountain Granite	CRI	Cracked Ice	SDS	Sonoran Desert Sandstone																																																																				
AQW	Antique White	CRM	Cream	SMG	Sierra Mountain Granite																																																																				
BCM	Black Chrome	HUG	Hunter Green	TXF	Textured Forest																																																																				
BGE	Beige	MDS	Mojave Desert Sandstone	WCP	Weathered Copper																																																																				
BPP	Brown Patina Powder	NBP	Natural Brass Powder	WIR	Weathered Iron																																																																				
CAP	Clear Anodized Powder	OCF	Old Copper	<i>Also available in RAL Finishes See submittal SUB-1439-00</i>																																																																					
Lens	12 - Soft Focus Lens 13 - Rectilinear Lens																																																																								
Shielding	11 - Honeycomb Baffle																																																																								

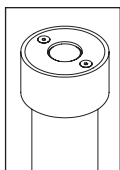
B-K LIGHTING

40429 Brickyard Drive • Madera, CA 93636 • USA
559.438.5800 • FAX 559.438.5900
www.bklighting.com • info@bklighting.com

RELEASED
05-17-17

DRAWING NUMBER
SUB000933

THIS DOCUMENT CONTAINS PROPRIETARY INFORMATION OF B-K LIGHTING, INC. AND ITS RECEIPT OR POSSESSION DOES NOT CONVEY ANY RIGHTS TO REPRODUCE, DISCLOSE ITS CONTENTS, OR TO MANUFACTURE, USE OR SELL ANYTHING IT MAY DESCRIBE. REPRODUCTION, DISCLOSURE OR USE WITHOUT SPECIFIC WRITTEN AUTHORIZATION OF B-K LIGHTING, INC. IS STRICTLY FORBIDDEN.



BKSSL
B-K LIGHTING

the power of

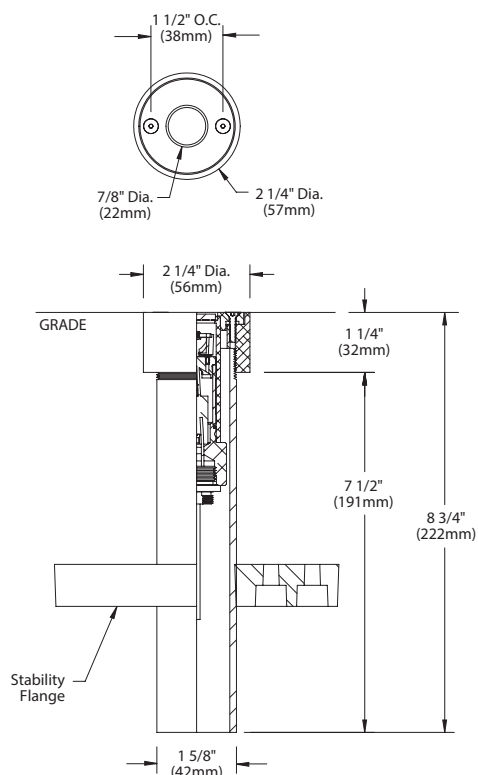


MINI-MICRO™ RECESSED UPLIGHT

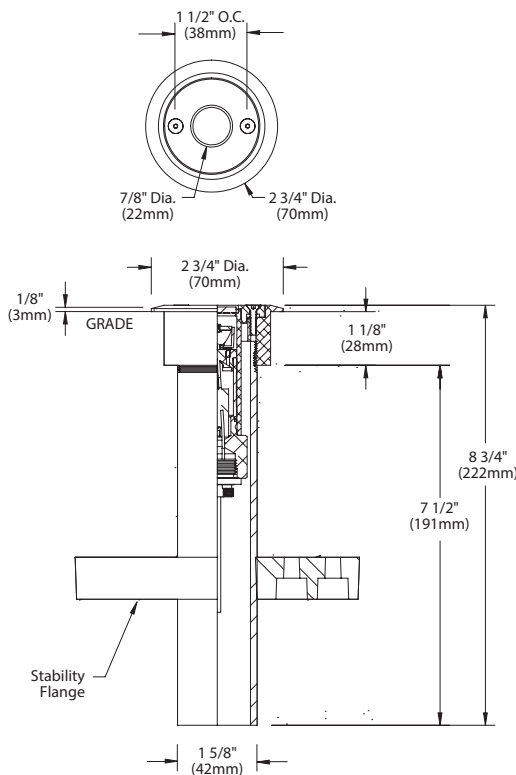
PROJECT:

TYPE:

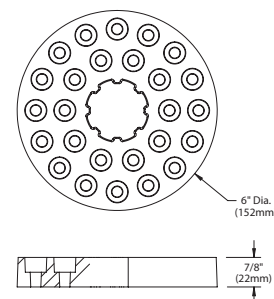
FLUSH MOUNT



SURFACE MOUNT



STABILITY FLANGE



All dimensions indicated on this submittal are nominal.
Contact Technical Sales if you require more stringent specifications.

SPECIFICATIONS

GreenSource Initiative™

Metal and packaging components are made from recycled materials. Manufactured using renewable solar energy, produced on site. Returnable to manufacturer at end of life to ensure cradle-to-cradle handling. Packaging contains no chlorofluorocarbons (CFC's). Use of this product may qualify for GreenSource efficacy and recycling rebate(s). Consult www.bklighting.com/greensource for program requirements.

Materials

Furnished in Copper-Free Aluminum (Type 6061-T6), Brass (Type 360) or Stainless Steel (Type 304).

Body

Fully machined from solid billet. Unibody design provides enclosed, water-proof wireway and integral heat sink for maximum component life. High temperature, silicone 'O' Ring provides water-tight seal. Provided with hard-coat (Type III) black anodize finish for maximum corrosion resistance. Weather-tight cable connector with 5' 18Ga., 2 wire low voltage cable.

Housing

Fixture provided with 1-5/8" dia., Schedule 80 PVC housing for direct burial into soil or concrete. 6" dia., molded stability flange projects into substrate to simplify installation and reinforce housing stability. Integral concrete pour collar for flush installation with finished grade. Collar material and finish to match faceplate. (2) Threaded holes for faceplate installation.

Faceplate

Fully machined from solid billet. Countersunk holes provide for flush hardware mounting. Accommodates [1] lens or louver media.

Lens

Shock resistant, tempered, glass lens is factory adhered to faceplate and provides hermetically sealed optical compartment. Specify soft focus (#12) or rectilinear (#13) lens.

BKSSL®

Integrated solid state system with 'e' technology. High power, forward throw source complies with ANSI C78.377 binning requirements. Exceeds ENERGY STAR® lumen maintenance requirements. LM-80 certified components.

Integral non-dimming driver. Minimum 50,000 hour rated life at 70% of initial lumens (L70). BKSSL technology provides long life, significant energy reduction and exceptional thermal management.

Optics

OPTIKIT™ modules are color-coded for easy reference: Narrow Spot (NSP) = Red, Spot (SP) = Green. Medium Flood (MFL) = Yellow and Asymmetrical (ASY) = Purple.

Installation

Flush Mount features integral concrete pour collar. Top edge of collar to be installed flush with finished grade. Collar material and finish to match faceplate. (2) Threaded holes for faceplate installation. Faceplate is suitable for walk-over and drive-over applications to 35,000 lbs. GVW.

Surface Mount features fully machined copper-free aluminum installation collar. Collar material and finish to match faceplate. (2) Threaded holes for faceplate installation.

Remote Transformer

For use with 12VAC BKSSL remote transformer or magnetic transformers only. B-K Lighting cannot guarantee performance with third party manufacturers' transformers.

Wiring

PVC coated, 18AWG, 150V, 60°C rated and certified to UL 1838 standard. Anti-Siphon Valve (ASV™) prevents "wicking" through conductor insulation.

Hardware

Tamper-resistant, stainless steel hardware. Faceplate screws are additionally black oxide treated for additional corrosion resistance.

Finish

StarGuard®, our exclusive RoHs compliant, 15 stage chromate-free process cleans and conversion coats aluminum components prior to application of Class 'A' TGIC polyester powder coating. Brass components are available in powder coat or handcrafted metal finish. Stainless steel components are available in handcrafted metal finish. (Brushed finish for interior use only).

Warranty

5 year limited warranty.

Certification and Listing

ITL tested to IESNA LM-79. UL Listed. Certified to CAN/CSA/ANSI Standards. RoHs compliant. Suitable for use in wet locations. Suitable for walk-over and drive-over applications to 35,000 lbs. GVW. Suitable for ground-mounted recessed. IP66 Rated. Made in USA.



*Energy Star is a registered trademark of the United States Environmental Protection Agency.

B-K LIGHTING

40429 Brickyard Drive • Madera, CA 93636 • USA
559.438.5800 • FAX 559.438.5900
www.bklighting.com • info@bklighting.com

RELEASED
05-17-17

DRAWING NUMBER
SUB000933



the power of 

BKSSL
SOLID STATE LIGHTING

LAMP & DRIVER DATA

e70, e71, e72, e73

DRIVER DATA	Input Volts	InRush Current	Operating Current	Operation Ambient Temperature
	12VAC/DC 50/60Hz	<250mA (non-dimmed)	500mA	-22°F-194°F (-30°C - 90°C)

LM79 DATA				L70 DATA		OPTICAL DATA	
BK No.	CCT (Typ.)	CRI (Typ.)	Input Watts (Typ.)	Minimum Rated Life (hrs.) 70% of initial lumens (L70)		Angle	Delivered Lumens
e70	2700K	80	3	50,000		17°	167
	2700K	80	3	50,000		21°	139
	2700K	80	3	50,000		28°	149
	2700K	~	3	50,000		17°x31°	151
e71	3000K	80	3	50,000		17°	175
	3000K	80	3	50,000		21°	146
	3000K	80	3	50,000		28°	156
	3000K	~	3	50,000		17°x31°	158
e72	4000K	80	3	50,000		17°	197
	4000K	80	3	50,000		21°	164
	4000K	80	3	50,000		28°	175
	4000K	~	3	50,000		17°x31°	178
e73	Amber (590nm)	~	3	50,000		~	~

FOR USE WITH	
DM	Mini-Micro™ Recessed Downlight
MM	Mini-Micro™ Floodlight
OM	Mini-Micro™ Twin Cylinder
PM-MM	Mini-Micro™ Pendant
RM-MM	Mini-Micro™ Ring Mount
SF-MM	Mini-Micro™ Staff Star™
SM-MM	Mini-Micro™ Surface Downlight
SN-MM	Mini-Micro™ Sign Star™
ST-MM	Mini-Micro™ Twin Sign Star™
TF-MM	Mini-Micro™ Twin Staff Star™
UL-MM	Mini-Micro™ Recessed Uplight
WM-MM	Mini-Micro™ Twin Pendant
YM	Mini-Micro™ Cylinder

OPTICS	
Optic	Angle
NSP - Narrow Spot	17°
SP - Spot	21°
MFL - Medium Flood	28°
ASY - Asymmetrical	17°x31°

B-K LIGHTING

40429 Brickyard Drive • Madera, CA 93636 • USA
559.438.5800 • FAX 559.438.5900
www.bklighting.com • info@bklighting.com

RELEASED
06-01-2018

DRAWING NUMBER
SUB-2582-00