

NUCRAFT

Kai Installation Instructions

Before Beginning Installation

- Read through the entire instruction thoroughly
- A minimum of 2 people are required for this assembly
- These instructions reflect typical assemblies; They may not match your specific configuration

Required Tools and Hardware

- Drill Driver
- #2 and #3 Phillips Bit
- 1/4"-1/8"-1/16" Allen Wrench
- 5/32" Drill Bit
- Laser Level

Required Tools and Hardware

1



2



3



4



5



6



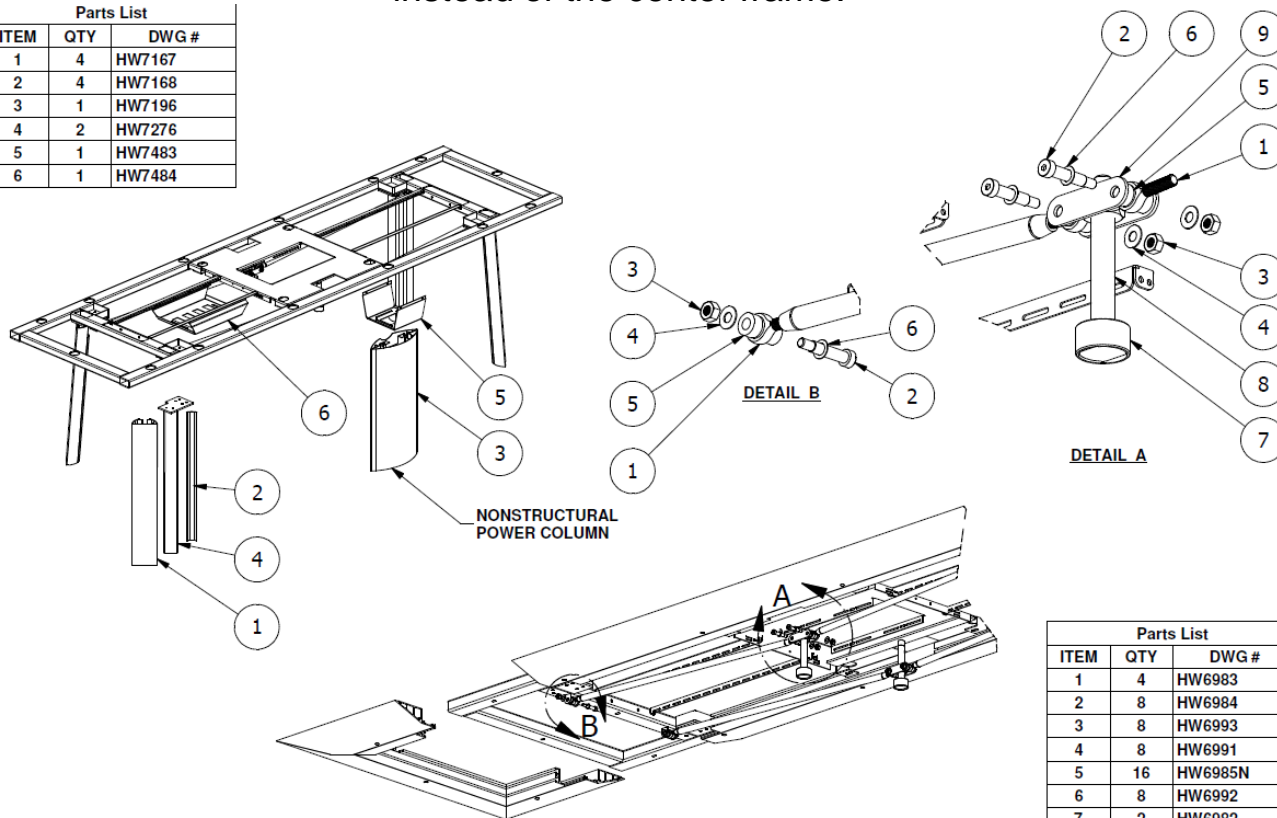
Note: Not all necessary hardware is pictured on this page

Standard Kai Table Setup

Note: For tables 96" and under, base will be assembled shipped.
Please skip to Step 9

*For "Boat-shaped" tables, legs are attached to end pieces instead of the center frame.

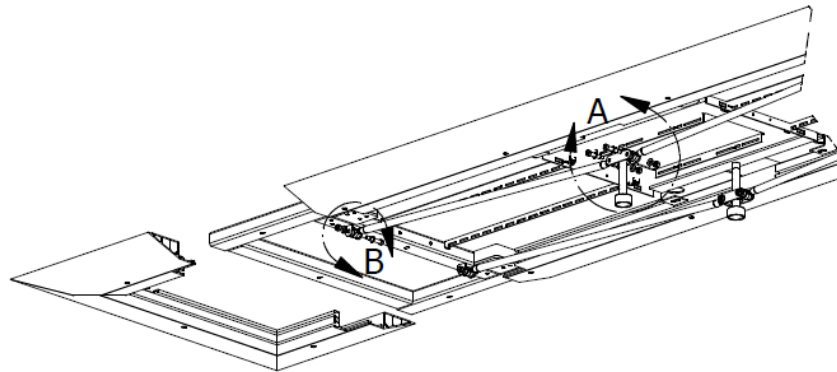
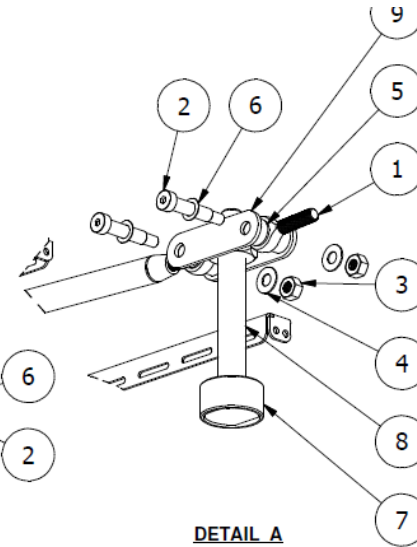
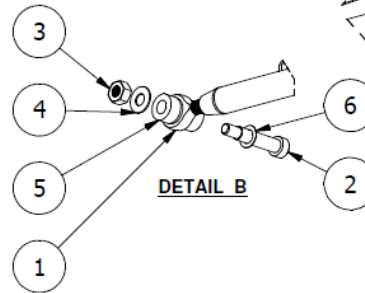
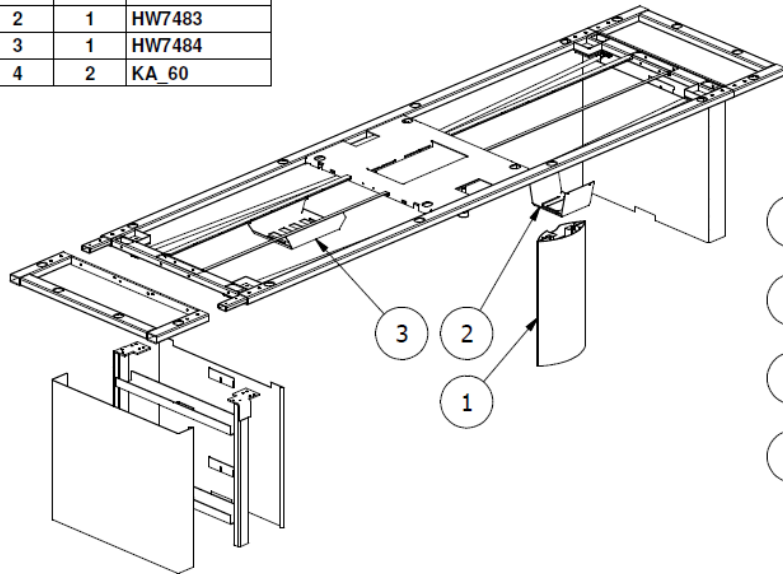
Parts List		
ITEM	QTY	DWG #
1	4	HW7167
2	4	HW7168
3	1	HW7196
4	2	HW7276
5	1	HW7483
6	1	HW7484



Parts List		
ITEM	QTY	DWG #
1	4	HW6983
2	8	HW6984
3	8	HW6993
4	8	HW6991
5	16	HW6985N
6	8	HW6992
7	2	HW6982
8	2	HW6989
9	2	HW7031

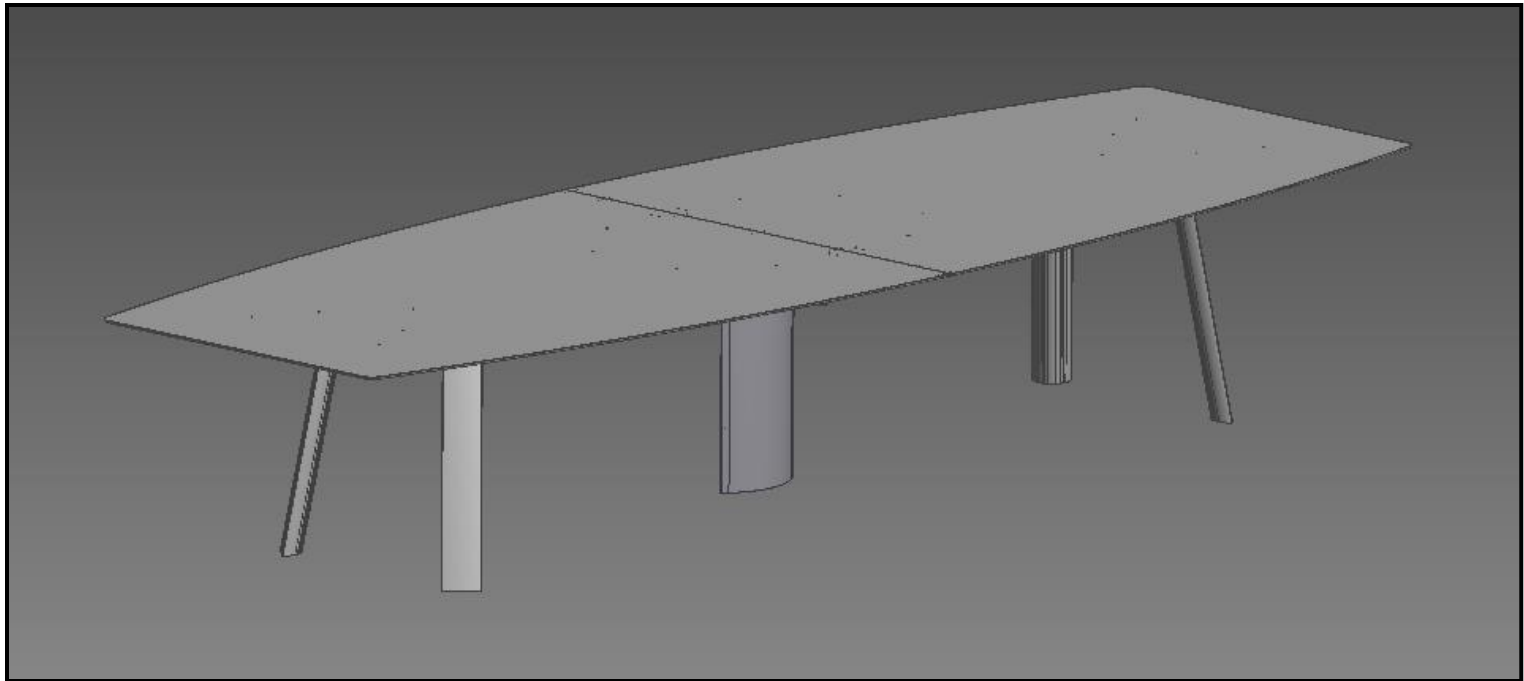
Kai Table with Panel Base

Parts List		
ITEM	QTY	DWG #
1	1	HW7196
2	1	HW7483
3	1	HW7484
4	2	KA 60



Parts List		
ITEM	QTY	DWG #
1	4	HW6983
2	8	HW6984
3	8	HW6993
4	8	HW6991
5	16	HW6985N
6	8	HW6992
7	2	HW6982
8	2	HW6989
9	2	HW7031

Kai Table with Boat Style

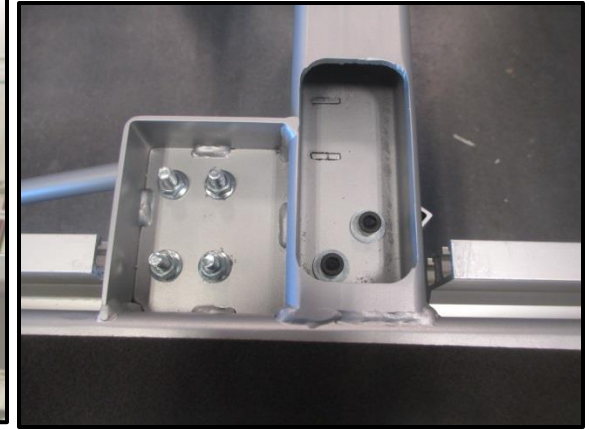


Note: Metal leg option is shown

Step 1

Attach Legs

- **Note:** For tables 180" or larger, the legs are attached to the end pieces, not the center frame.
- If standard leg attachment, secure the top of the leg in the designated location
- If panel leg attachment, attach as shown, with the 6 locations fastened



Note: Leg Attachment using provided fasteners



Note: Panel leg attachment using provided fasteners

Step 1a (Boat Style)

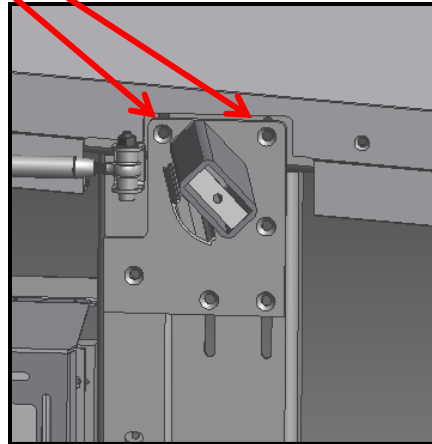
Attach Legs

- Panel-leg Boat-style will be attached like rectangular Kai
- Metal leg Boat-style will be attached using the additional holes



Note: Panel leg attachment using provided fasteners

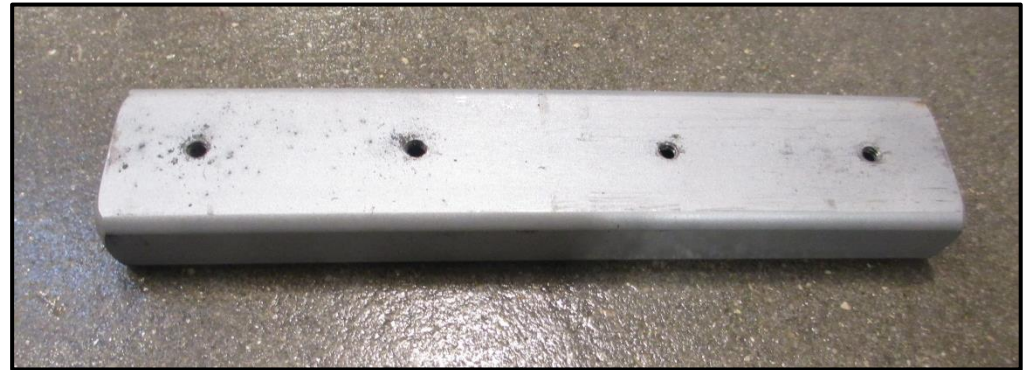
Note: Additional fasteners are needed for the metal leg attachment



Step 2

Insert Attachment Keys

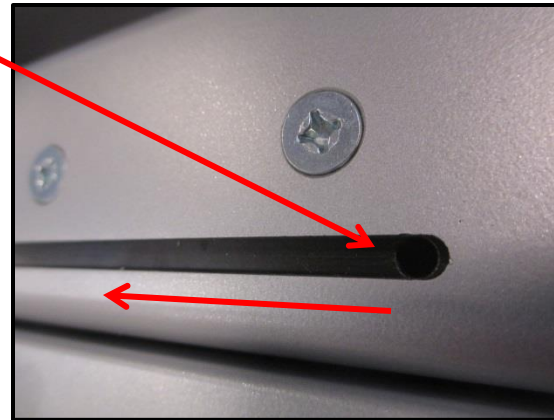
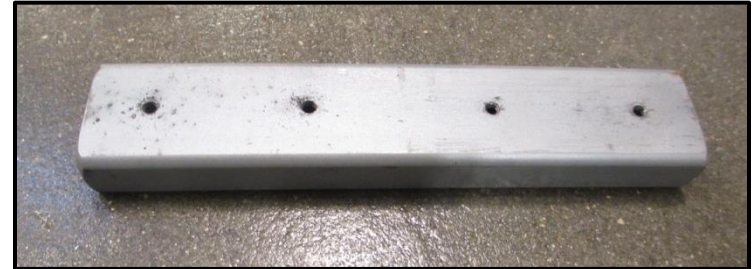
- Slide attachment key into each end of each base (4 total)
- Once inserted, align the two holes and place a flat-head counter-sink screw (*hardware #1*) to maintain alignment



Step 2a (Boat-Style)

Insert Attachment Keys

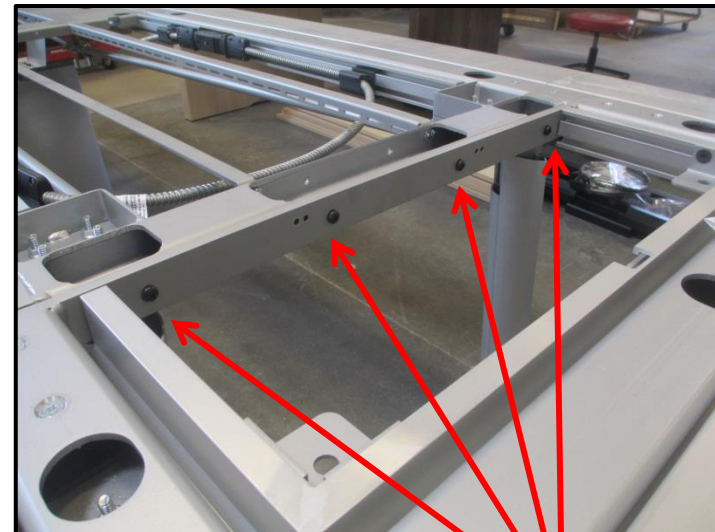
- Slide attachment key into each end of each base (4 total)
- The entire piece should be inserted into the end extrusion
- Line up the end extrusion to the center base, and using a screw driver slide the attachment key into the center base structure



Step 3

Attach End Pieces

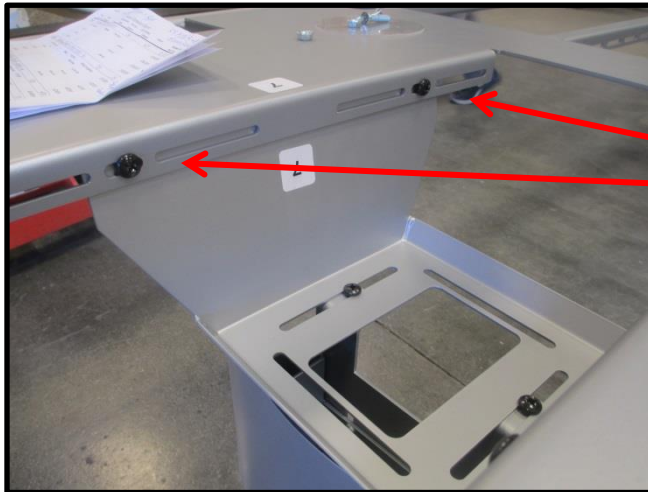
- Slide end piece onto the attachment key and make flush with end of base. **Check that numbers match from base to end piece**
- Insert two flat-head counter-sink screws (*hardware #1*) on each side of each new end piece and secure.
- Secure the front edge of the end piece by inserting 4 bolts and nuts (*hardware #3*)



Step 4

Attach Center Column (if applicable)

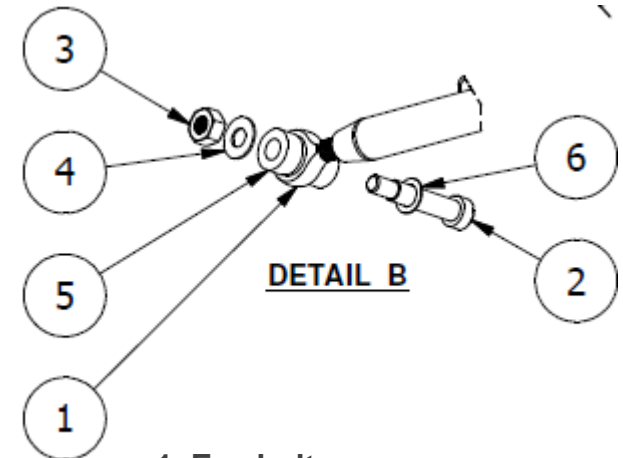
- Center column should arrive assembled.
- Attach the top angled plate to the frame of the base using *hardware #3* (see below – 4 attachment points)



Step 5

Attaching Hardware to End of Base

- Remove the nut outside of flanges
- Pull horizontal bolt slightly out in order to insert the eye-bolt
- Place second shoulder nut (spacer) onto horizontal bolt to secure the eye-bolt
- Secure connection by tightening the washer and nut on outside of flange



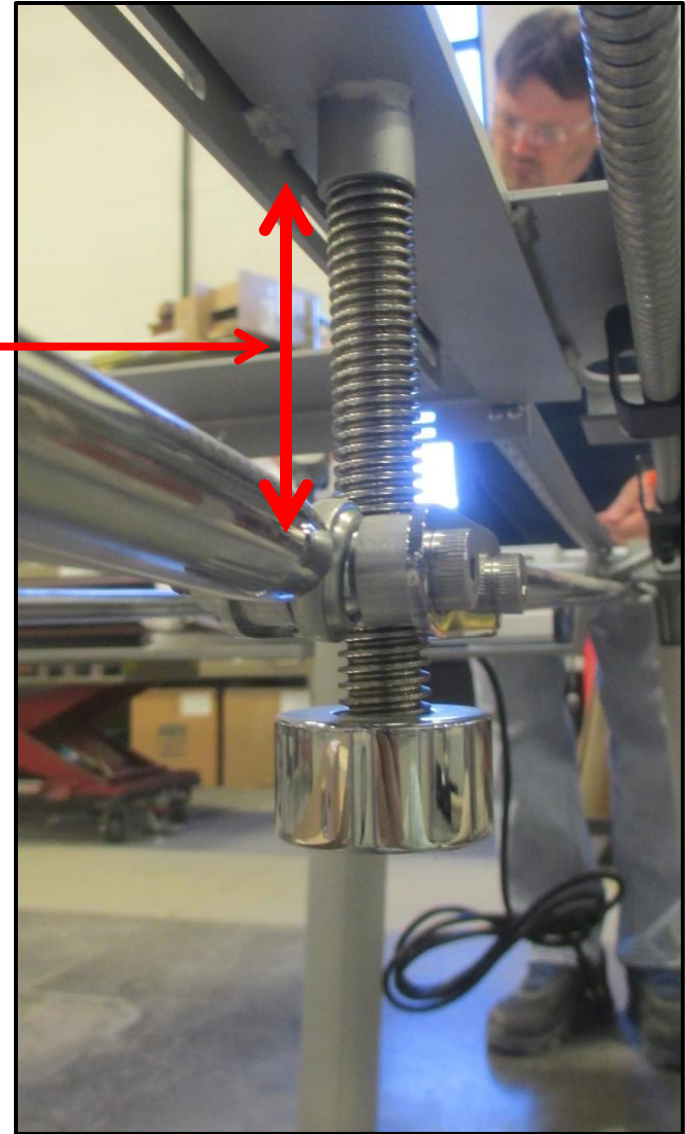
1. Eye bolt
2. Nut
3. Nut
4. Washer
5. Spacer
6. Horizontal Bolt/Washer

Step 6

Adjusting Camber Rods

- Each rod has one end that is reverse-threaded, therefore as the rod is rotated, it will pull the jack screw toward the top.
- Rotate rods to tighten jack bolt to the top
- Once tightened, thread bolt should be tight against the bottom of the top.

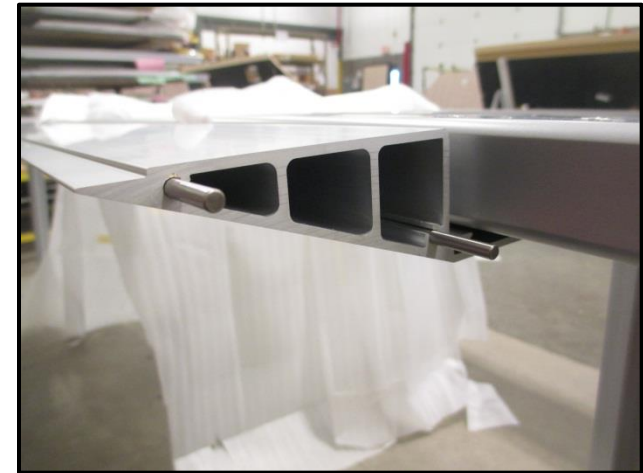
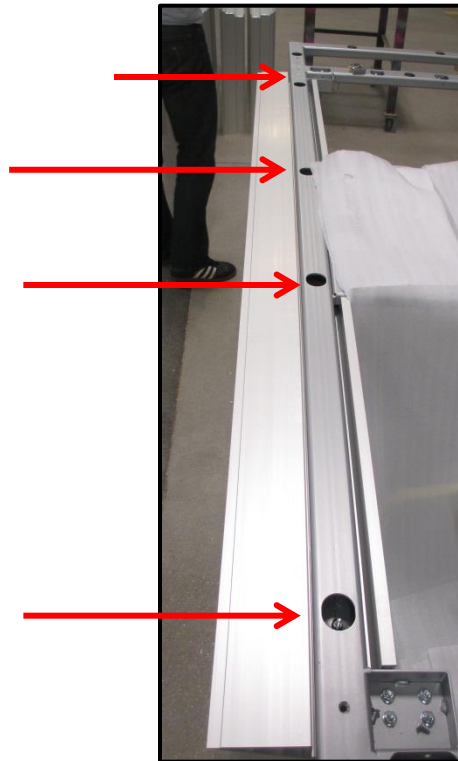
Note: Number of threads that are above connection point



Step 7

Attaching Side Aprons

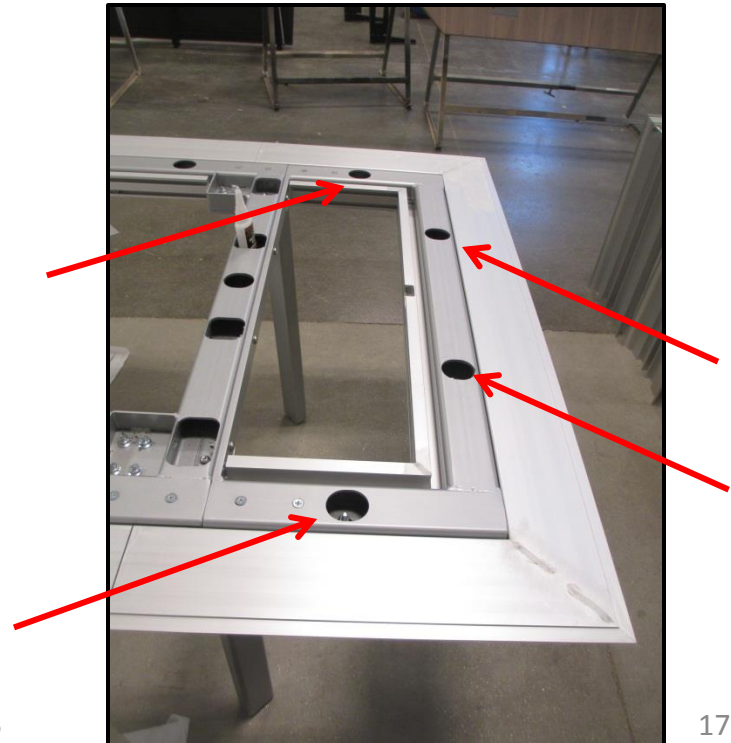
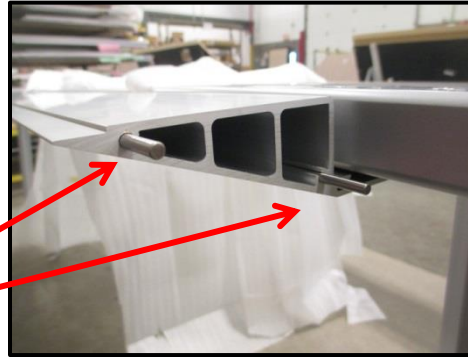
- Align the holes of the apron with the holes on the top surface of the base
- Insert flat-head counter-sink screws (*hardware #2*) through the apron and the side length of the steel base from the underside. Secure with the included nuts
- Repeat on second side
- ***Note:** Screws and nuts should already be secured in locations



Step 8

Attaching End Aprons

- Similar to the side apron, align the holes of the apron with the holes on the top surface of the base
- End extrusion should slide into pins of the side extrusion
- Insert flat-head counter-sink screws (*hardware #2*) through the apron and the steel base from the underside
- Repeat at other end



Step 9

Place Top on Base

- Using a 6' level, ensure the base is level
- Adjust glides underneath legs if needed
- Next, place the top on the base without tightening, and continue adjusting if needed



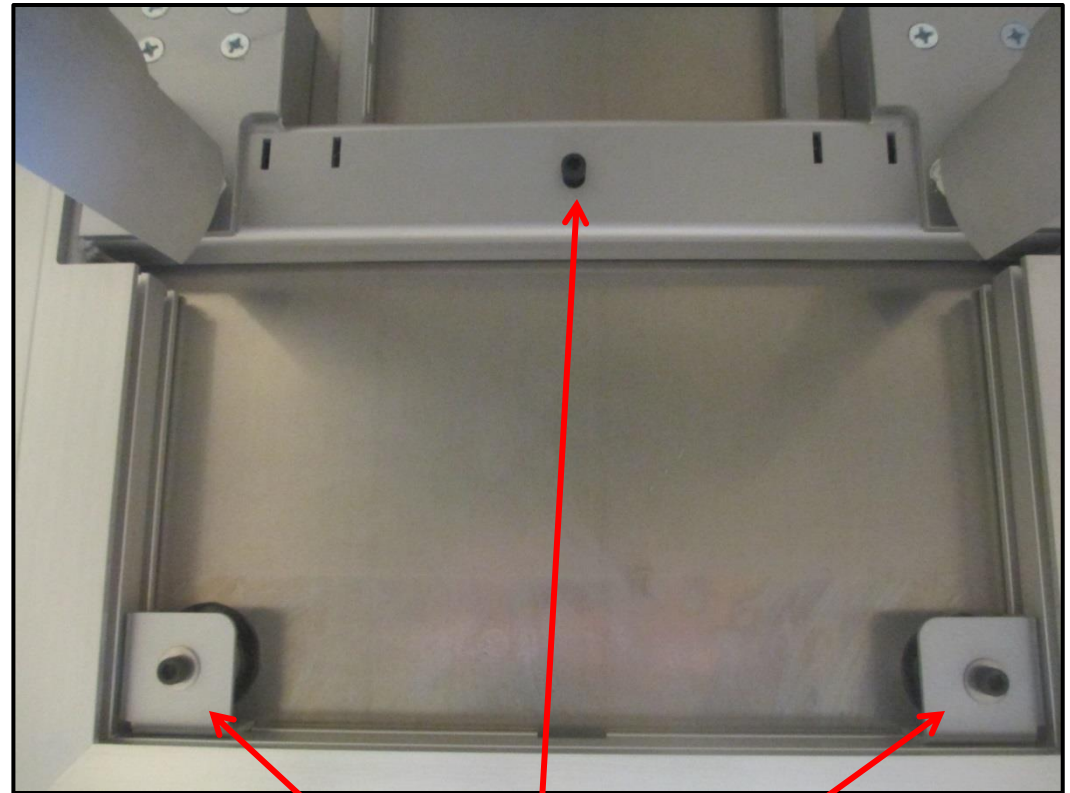
Note: Glass top will follow same instructions and will sit on bumpers

(Picture shows veneer top)

Step 10

Secure Top to Base

- Insert screws (*hardware #6*) at each corner support (puck) upward into the table top.
- Some larger tables will have multiple pucks – please insert a screw into each puck
- A screw should be also be inserted in the horizontal bar (see picture)
- **Insert cautiously, as too much rotation could affect the top surface**

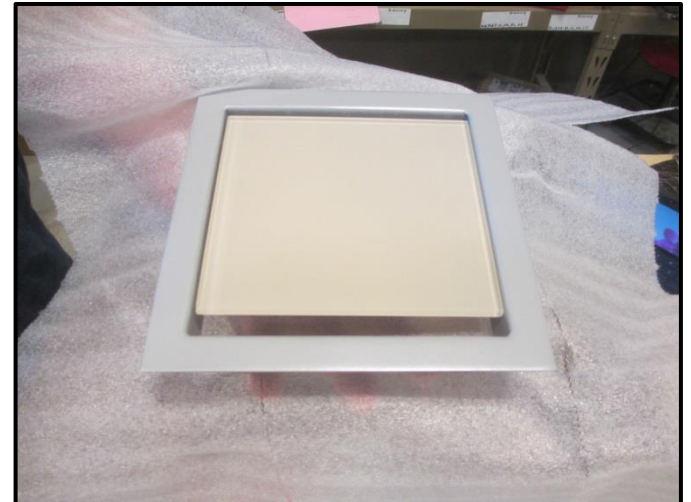
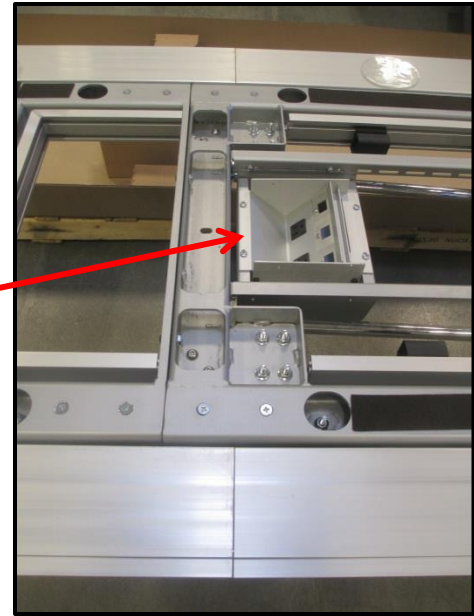


Note:
The top shown in the photo only has 2 pucks per end

Step 11

Inserting Bezels (if applicable)

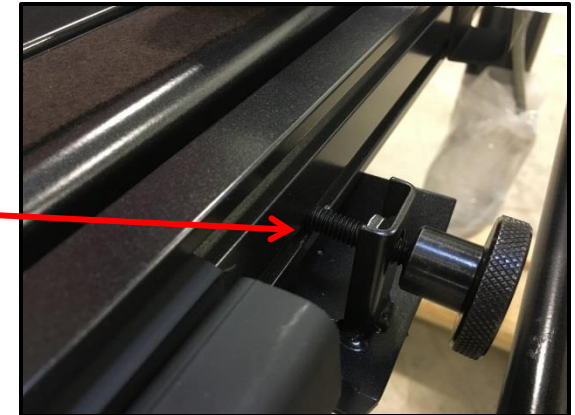
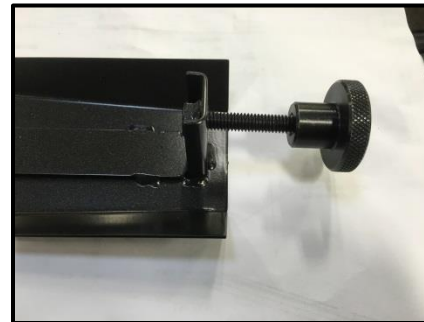
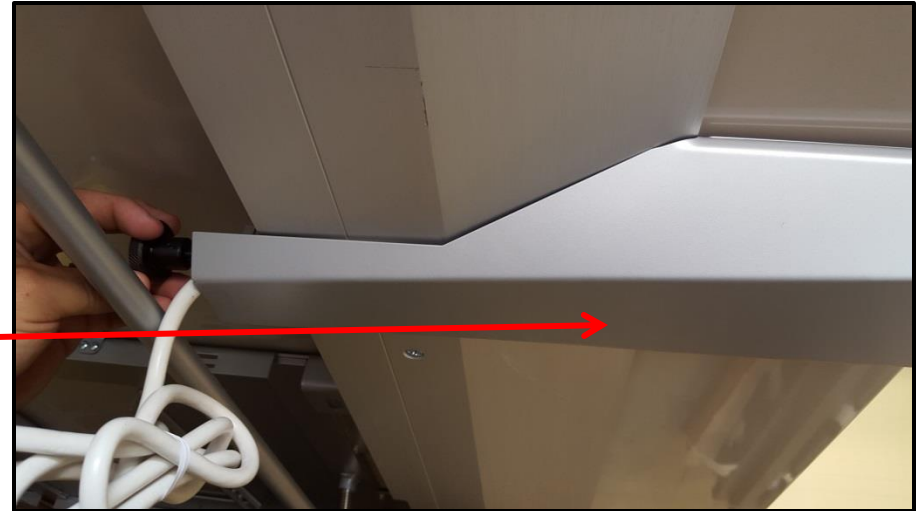
- Power covers will be installed onto base.
- There is a bezel with each power cove.
- The bezels are installed by the “drop-in” method



Step 12

Installing Power Rail (if applicable)

- Power Rail is installed by securing the front edge on the Kai base
- Then secure power rail by tightening the bolt in the back of the power rail
- The bolt will be inserted into the extrusion, therefore it can be installed anywhere along the edge of the table.



Step 13

Installing Power Connections (if applicable)

- Wire management will wrap around each end of the base as shown at below

