

Beam 3, Beam 4, Beam 6 and Sculpt **Perimeter**

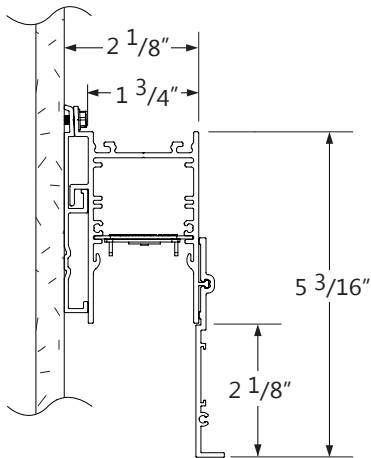
Flexible architectural perimeter
lighting systems



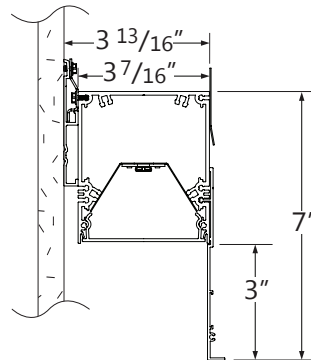
Lighting that blends into the space

Open up the room with space-enhancing perimeter lighting. Experience reliable service and cost-effective quality illumination based on the existing Beam and Sculpt lighting systems.

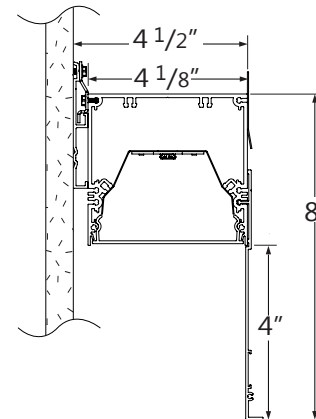
Sculpt Perimeter



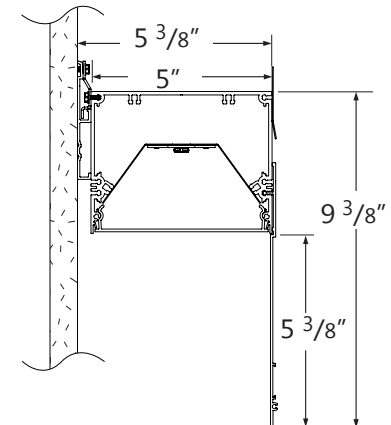
Beam 3 Perimeter



Beam 4 Perimeter



Beam 6 Perimeter



Perimeter is available in multiple regressed heights up to a 1:1 mounting. Perimeter luminaires are mounted on a wall track for a quick and consistent installation. Compatible with multiple grids and drywall installations.



Added installation flexibility

The Beam 3, Beam 4 and Beam 6 Perimeter systems feature a patented telescopic sliding LED board design (patent number: US 8,794,795 B2) that allows runs to be field cut to facilitate installation and specification.

