

SUPERNOVA 751

Vandal Resistant

LVP751 Series LED



Fixture Type

Date

Job Name

Approved By

Catalog Number

SPECIFICATIONS

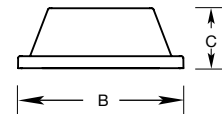
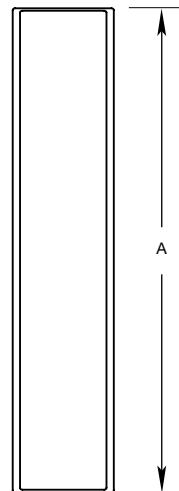
ADA Compliant



| | |
|--------------------------|---|
| Description | The Supernova series provides vandal resistant construction at a cost effective price point. These fixtures feature our lifetime warranty against vandalism and have been proven in thousands of installations over decades of use. |
| Back Plate | Die formed 16 gauge cold rolled zinc coated steel. Finished with electrostatically applied white polyester powder coat. |
| Lens | One piece injection molded UV stabilized prismatic polycarbonate with minimum 1/8" wall thickness. Secured to back plate with (6) stainless steel TORX® head screws. Provisions for surface mount conduit are available. |
| Reflector | Die formed 20 gauge cold rolled steel. Finished with white polyester powder coat. |
| Driver | Constant current driver, 120-277V. 347V optional. |
| LED | Samsung LM561B+ series @ 2700K, 3000K, 3500K, 4000K, or 5000K and 82 CRI wired in parallel-series. Ten year warranty on LED boards against operational defects. |
| Listings | UL, C.UL., Damp optional, Wet optional. |
| Lifetime Warranty | Luminaire LED Incorporated will repair or replace any fixture damaged due to vandalism for the lifetime of the installation. |

DIMENSIONAL DATA

| | A | B | C |
|--------|-------|------|------|
| LVP751 | 49.00 | 8.56 | 3.88 |



SUPERNOVA 751

Vandal Resistant

Fixture Type

LVP751 Series LED

ORDERING INFORMATION

| SERIES | LED | CCT | DRIVER | VOLTS | LENS | COLOR | OPTIONS | | TX/SD |
|--------|-----|-------|--------|---------|------|-------|---------|---------|-------|
| LVP751 | 25W | 2700K | CC | 120-277 | CP | WHT | DIM | EMB310 | |
| | 50W | 3000K | DIM | 347 | OP | | GLR | EMB125R | |
| | 80W | 3500K | PRD | | | | DAMP | EMB250R | |
| | | 4000K | | | | | WET | EMB375R | |
| | | 5000K | | | | | AL | ST/SC | |
| | | | | | | | S/B | | |
| | | | | | | | COR | | |
| | | | | | | | OCC | | |
| | | | | | | | OCC50 | | |
| | | | | | | | OCCFA | | |

CC = Constant Current (Standard)

DIM = 0-10V Dimming, 10% at lowest level

PRD = Programmable driver. Specify Watts or Lumens in Ordering Information.



OPTIONS

| | | |
|---------|--|--------------------|
| LENS | CP = Clear Prismatic Standard | OP = Opal Optional |
| COLORS | WHT = White | |
| DIM | 0-10V dimming driver. 10% at lowest level. | |
| GLR | Fuse and fuse holder. | |
| DAMP | Closed cell neoprene gasketing as required for UL damp location listing. | |
| WET | Silicone and neoprene gasketing as required for UL wet location listing. | |
| AL | Aluminum back plate and reflector. | |
| S/B | Steel surface back box. Constructed from 16 gauge cold rolled zinc coated steel. Finished with white polyester powder coat. | |
| COR | Corner mounted back box. Constructed from 16 gauge cold rolled zinc coated steel. Finished with white polyester coat. | |
| OCC | Microwave occupancy sensor mounted behind the lens. On/Off operation only. Consult factory for availability in select models. | |
| OCC50 | Microwave occupancy sensor mounted behind the lens. 50% of LED's constantly on and 50% sensed. | |
| OCCFA | Microwave occupancy sensor mounted behind the lens. All LED boards sensed to dim to 50%, 30%, 20%, or 10% field selectabale low levels. Factory standard preset of 50% dimming level and 20 minute time out. | |
| EMB310 | 800 lumen, 90 minute self contained emergency battery pack. 0°C (32°F) to 55°C (131°F). Not available in 347V. Meets CA Title 20 Standards | |
| EMB125R | Stand-alone inverter that will operate a 125W maximum load for 90 minutes. 20°C (68°F) to 30°C (86°F). Not available in 347V. | |
| EMB250R | Stand-alone inverter that will operate a 250W maximum load for 90 minutes. 20°C (68°F) to 30°C (86°F). Not available in 347V. | |
| EMB375R | Stand-alone inverter that will operate a 375W maximum load for 90 minutes. 20°C (68°F) to 30°C (86°F). Not available in 347V. | |
| ST/SC | Phillips head screws instead of TORX® head. | |
| TX/SD | TORX® head bit. | |



SUPERNOVA 751

Vandal Resistant

Fixture Type

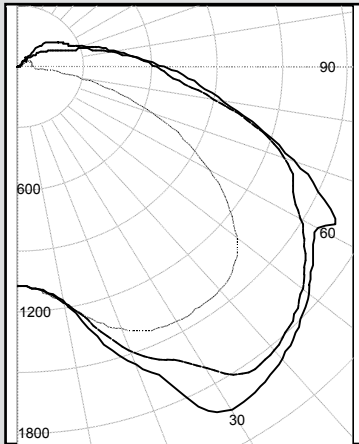
LVP751 Series LED

PHOTOMETRIC DATA

| Model | Watts | Input Watts | Lens | Delivered Lumens | | | | |
|---------|-------|-------------|--|------------------|-------|-------|-------|-------|
| | | | | 2700K | 3000K | 3500K | 4000K | 5000K |
| LVP 751 | 25W | 27.1W | CP | 2857 | 3120 | 3184 | 3040 | 3131 |
| LVP 751 | 25W | 27.1W | OP | 2008 | 2192 | 2238 | 2137 | 2201 |
| LVP 751 | 50W | 54.3W | CP | 5726 | 6253 | 6382 | 6092 | 6274 |
| LVP 751 | 50W | 54.3W | OP | 4025 | 4396 | 4486 | 4282 | 4410 |
| LVP 751 | 80W | 81.4W | CP | 8585 | 9375 | 9568 | 9133 | 9406 |
| LVP 751 | 80W | 81.4W | OP | 6034 | 6590 | 6725 | 6420 | 6612 |
| LVP 751 | PRD | | Programmable Driver. Specify Wattage or Lumens in Ordering Information | | | | | |

MODEL LVP751-80W-4000K-CP

Delivered Lumens: 9,133 Lumens



IES FILE: LVP751-80W-4000K-CP

Total Power: 81.4W

Testing was performed in accordance with IES LM-79-08

| Zone | Lumens | % Lamps |
|----------|--------|---------|
| 0 - 30 | 1227 | 13.4 |
| 0 - 40 | 2315 | 25.4 |
| 0 - 60 | 4954 | 54.2 |
| 60 - 90 | 3021 | 33.1 |
| 0 - 90 | 7974 | 87.3 |
| 90 - 180 | 1159 | 12.7 |
| 0 - 180 | 9133 | 100.0 |



MOUNTING PLATE DETAILS

