



Fixture Type

Date

Job Name

Approved By

Catalog Number

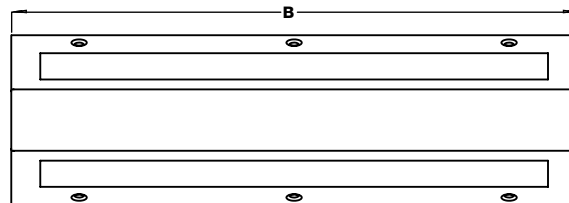
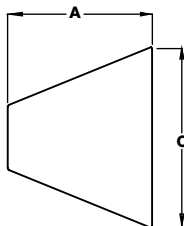
SPECIFICATIONS



Description	The Super Max Confinement Wall Mount Luminaire is ideally suited for behavioral institutions and correctional facilities. Available options provide suitability for minimum to maximum security locations. A ligature resistant design is standard for all variations of the Wall Mount series. Various materials and lumen outputs are available to satisfy nearly any conceivable institutional requirement.
Housing	One piece die formed housing, available in stainless or cold rolled steels. All corners and seams continuously welded smooth. Hinge design protects from unauthorized fixture entry.
Mounting Plate	Die formed from same material as housing. Integral mounting bosses provide for entrapment of concealed contraband. Provisions for heavy duty hardware for direct mounting to building surface. Integral side locks align housing to mounting plate via locking tabs.
Gear Tray	Field replaceable integral unit containing LED circuit board, driver, reflector, and modular wiring. Optional dimmable driver available. Designed for quick replacement within the cell environment. LED smart board design provides auto-compensate feature to ensure fail safe operation in the event of multiple LED chip failures. High efficacy, long-life mid-power board featuring Samsung 561B+ LED's mounted directly to integral heat sink for maximum thermal dissipation. Uplight and downlight component on one circuit standard, optional two circuits available. Available with optional field adjustable LED night lights.
Hinge	Internal welded piano-type hinge (1/4" knuckle/ 1/8" diameter pin) standard. Optional full length hinge available.
Lens	As specified up to 0.75" thickness - see ordering information. Clear lens combinations include high efficacy LED diffusion material.
Lens Retention	Vertically adjustable "Z" brackets secure lens to housing via internally welded stainless steel studs and heavy duty hardware.
Fasteners	Hardened tamper resistant security screws with cage nuts. Fully recessed.
Finish	Brushed stainless steel or electrostatically applied white polyester powder coating.
Light Engine Warranty	Ten year warranty on LED boards against operational defects. Driver covered by manufacturer's warranty.
Listings	U.L., C.U.L., Wet location optional.

DIMENSIONAL DATA

	A	B	C
WM11	7.61"	15"	10.8"
WM12	7.61"	26"	10.8"
WM13	7.61"	37"	10.8"



SUPER MAX

High Security Confinement

Fixture Type

WM11 WM12 WM13

WM Series LED

ORDERING INFORMATION

SERIES	HOUSING	DRIVER	CCT	VOLTS	LENS	COLOR	OPTIONS	CTX
/								
WM11 11"x 15" -25W	0 - 14ga CRS (Painted)	CC	2700K	120-277	Lamp Side	BLK	GLR	
WM12 11"x 26" - 50W	1 - 12ga CRS (Painted)	DIM	3000K		0 - No Lens	WHT	LEDNL	
WM13 11"x 37" - 80W	2 - 14ga SS (Brushed)	PRD	3500K		A - .125" DR Prismatic Acrylic	BRZ	AMBNL	
	3 - 12ga SS (Brushed)		4000K		B - .125" Prismatic Polycarbonate	GRY	FLH	
			5000K		C - .125" Clear Polycarbonate	SIL	DLO	
					D - .156" Prismatic Polycarbonate		ULO	
					D1- .187" Prismatic Polycarbonate		2B	
					D2- .187" Prismatic Glass		WET	
					E - .250" Clear Polycarbonate		KO	
					F - .250" Clear Tempered Glass			
					G - .375" Clear Polycarbonate			
					H - .375" Clear Tempered Glass			
					I - .500" Clear Polycarbonate			
					J - .500" Clear Tempered Glass			
					Environmental Side			
					0 - No Lens			
					1 - .125" Clear Polycarbonate			
					2 - .187" Clear Polycarbonate			
					3 - .187" Clear Tempered Glass			
					4 - .250" Clear Acrylic			
					5 - .250" Clear Polycarbonate			
					6 - .250" Clear Tempered Glass			
					7 - .375" Clear Polycarbonate			
					8 - .375" Clear Tempered Glass			
					9 - .500" Clear Polycarbonate			
					10 - .500" Clear Tempered Glass			
					Up to a 0.75" thick maximum combination of lenses			

CC = Constant Current (Standard)
 DIM = 0-10V Dimming, 10% at lowest level
 PRD = Programmable driver. Specify Watts
 or Lumens in ordering information.



OPTIONS

COLORS	BLK = Black	WHT = White	BRZ = Bronze	GRY = Gray	SIL = Silver	CUST = Custom Color (Consult Factory)
*PRD	Programmable driver. When ordering, must specify Watts or Lumens. Consult factory for availability.					
GLR	Fuse and fuse holder					
LEDNL	LED Night Light with field adjustable levels in 2700K, 3000K, 3500K, 4000K, or 5000K. Requires separately controlled circuit. Consult factory for availability.					
AMBNL	Amber LED Night Light with field adjustable levels with peak wavelength at 593 nm. Requires separately controlled circuit. Consult factory for availability.					
DLO	Downlight only					
ULO	Uplight only					
2B	Two drivers. Uplight and downlight components on independent circuits.					
FLH	Full length hinge					
WET	Neoprene gasketing for wet location.					
KO	Provisions for surface conduit entry. N/A with WET option. Consult factory for availability in select models.					
CTX	TORX® head bit for Confinement Series.					

PHOTOMETRIC DATA

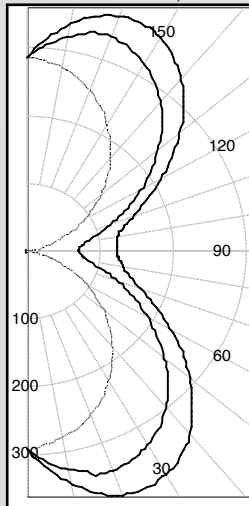
Model	Watts	Input Watts		Delivered Lumens								
				2700K		3000K		3500K		4000K		5000K
WM11	25W	26.2		1542		1558		1590		1640		1689
WM12	50W	54.1		3655		3694		3772		3889		4006
WM13	80W	82.7		5284		5339		5452		5621		5790
WMxx	PRD			Programmable driver. Specify Wattage or Lumens in Ordering Information.								

MODEL WM11-8-CC-A/4

Delivered Lumens: 1,519 Lumens

Total Power: 26.2W

Testing was performed in accordance with IES LM-79-08



Zone	Lumens	% Lamps
0 - 30	221	14.6
0 - 40	356	23.4
0 - 60	599	39.5
60 - 90	174	11.5
0 - 90	774	50.9
90 - 180	745	49.1
0 - 180	1519	100.0

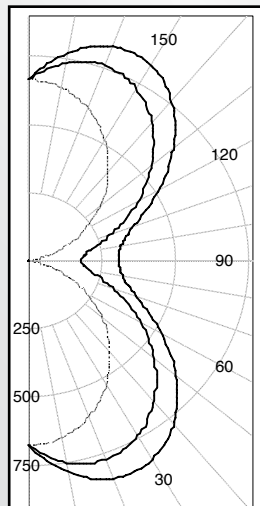
PHOTOMETRIC DATA

MODEL WM12-1-CC-A/4

Delivered Lumens: 3,601 Lumens

Total Power: 54.1W

Testing was performed in accordance with IES LM-79-08



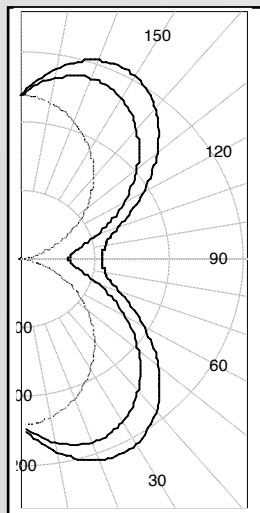
Zone	Lumens	% Lamps
0 - 30	513	14.3
0 - 40	826	22.9
0 - 60	1395	38.7
60 - 90	425	11.8
0 - 90	1820	50.5
90 - 180	1781	49.5
0 - 180	3601	100.0

MODEL WM13-8-CC-A/4

Delivered Lumens: 5,202 Lumens

Total Power: 82.7W

Testing was performed in accordance with IES LM-79-08



Zone	Lumens	% Lamps
0 - 30	735	14.1
0 - 40	1185	22.8
0 - 60	2006	38.5
60 - 90	2586	11.8
0 - 90	2618	50.3
90 - 180	2586	49.7
0 - 180	5205	100.0

MOUNTING DETAILS

