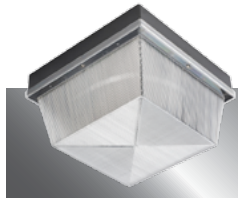


Blockade 1212

Vandal Resistant

LVP1212 Series LED



WALL /CEILING
LED

Fixture Type

Date

Job Name

Approved By

Catalog Number

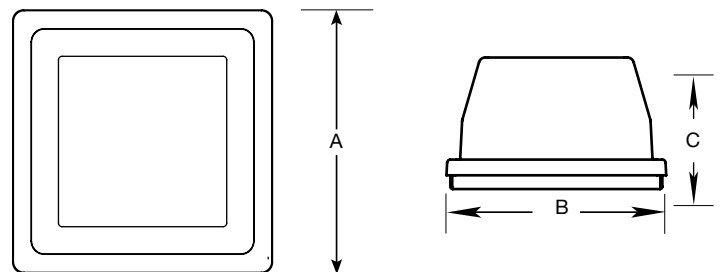
SPECIFICATIONS



Description	The Blockade 1212 series provides vandal resistant construction at a cost effective pricepoint. These fixtures feature our lifetime warranty against vandalism and have been proven in thousands of installations over decades of use.
Housing	Die formed 12 gauge aluminum with continuously welded corners providing watertight enclosure. Finished with electrostatically applied polyester powder coat.
Lens	One piece injection molded UV stabilized prismatic polycarbonate with minimum 1/8" wall thickness. Secured to housing with (2) stainless steel TORX® head screws.
Driver	Constant current driver at 350mA, 120-277V only.
LED	Samsung LM561B+ series @ 3000K, 3500K, 4000K, or 5000K and 82 CRI wired in parallel-series. L ₇₀ projected life of over 130,000 hours at 50°C. Tested in accordance with LM-80. Ten year warranty on LED boards against operational defects.
UL Listing	UL, C.UL., Damp optional, Wet optional.
Lifetime Warranty	Luminaire LED Incorporated will repair or replace any fixture damaged due to vandalism for the lifetime of the installation.

DIMENSIONAL DATA

	A	B	C
LVP1212	12.11	12.11	5.77
LPL1212	12.38	12.38	5.90
WVP1212	12.38	12.25	7.82



ORDERING INFORMATION

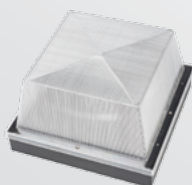
SERIES	LED	CCT	VOLTS	LENS	COLOR	OPTIONS	TX/SD
LVP1212	15W	3000K	120-277	CP	BLK	PC	WET
LPL1212	25W	3500K		OP	WHT	GLR	BRKT
WVP1212	40W	4000K			BRZ	OCC	EMB310
		5000K			GRY	A/B	ST/SC
						DAMP	

OPTIONS

LENS	CP = Clear Prismatic Standard	OP = Opal Optional		
COLORS	BLK = Black	WHT = White	BRZ = Bronze	GRY = Gray
DIM	0 - 10V dimming driver. 10% at lowest level.			
PC	Photoelectric switch. (Requires A/B option).			
GLR	Fuse and fuse holder.			
OCC	Microwave occupancy sensor mounted behind the lens. Fixture switched on or off depending on occupancy condition. Consult factory for availability in select models.			
A/B	Aluminum surface back box. Constructed from .090 aluminum continuously welded to provide water tight construction.			
DAMP	Closed cell neoprene gasketing as required for UL damp location listing.			
WET	Silicone and neoprene gasketing for wet location. Surface mount only.			
BRKT	Welded bracket for horizontal mounting (LVP1212 only).			
EMB310	1200 lumen self-contained 90 minute emergency battery pack for 15W minimum operation. 0°C (32°F) to 55°C (131°F). Not available in 347V.			
ST/SC	Slotted screws instead of TORX® head.			
TX/SD	TORX® head bit.			

VISOR OPTIONS

LVP1212



LPL1212



WVP1212



Blockade 1212

Vandal Resistant

Fixture Type

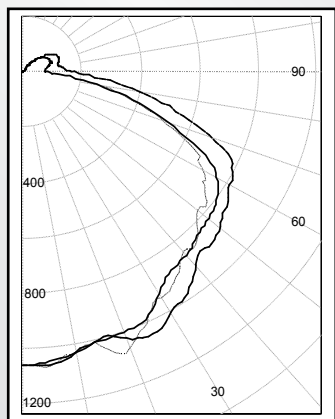
LVP1212 Series LED

PHOTOMETRIC DATA

Model	Watts	Input Watts	Delivered Lumens		Delivered Lumens		Delivered Lumens		Delivered Lumens	
			Clear	Opal	Clear	Opal	Clear	Opal	Clear	Opal
			3000K		3500K		4000K		5000K	
LVP1212	15W	13.8W	1669	1172	1704	1196	1757	1234	1809	1271
LVP1212	25W	27.6W	3338	2346	3408	2395	3514	2470	3619	2543
LVP1212	40W	41.4W	5006	3412	5112	3596	5270	3704	5428	3815

MODEL LVP1212-40W-4000K-CP

Delivered Lumens: 4,880 Lumens



IES FILE: LVP1212-40W-4000K-CP

Total Power: 41.4W

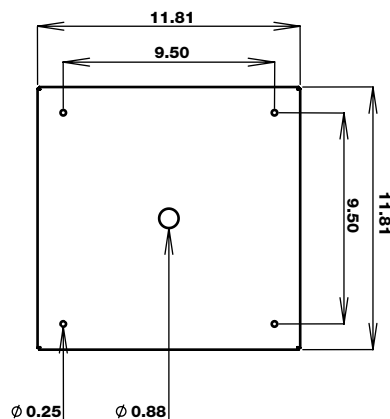
Testing was performed in accordance with IES LM-79-08

Zone	Lumens	% Lamps
0 - 30	857	17.6
0 - 40	1443	29.6
0 - 60	2871	58.8
60 - 90	1486	30.5
0 - 90	4357	89.3
90 - 180	523	10.7
0 - 180	4880	100.0

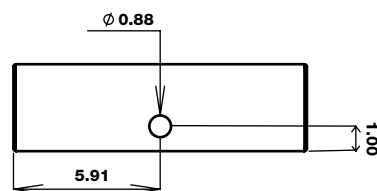


MOUNTING PLATE DETAILS

Housing



KO Detail



BRKT Detail

