

# BLOCKADE 58

Vandal Resistant

LVP58 Series LED



Fixture Type

Date

Job Name

Approved By

Catalog Number

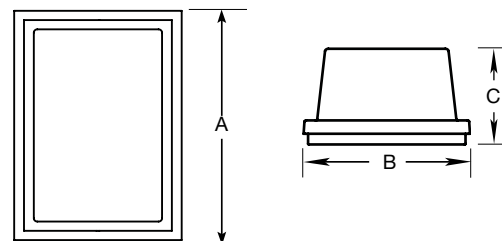
## SPECIFICATIONS



<b>Description</b>	The Blockade 58 series provides vandal resistant construction at a cost effective price point. These fixtures feature our lifetime warranty against vandalism and have been proven in thousands of installations over decades of use.
<b>Housing</b>	Aluminum housing continuously welded to provide watertight construction. Finished with polyester powder coat.
<b>Lens</b>	One piece injection molded UV stabilized prismatic polycarbonate with minimum 1/8" wall thickness. Secured to housing with (2) stainless steel TORX® head screws.
<b>Driver</b>	Constant current driver at 700mA, 120-277V.
<b>LED</b>	Samsung LM561B+ series @ 2700K, 3000K, 3500K, 4000K, or 5000K and 82 CRI wired in parallel-series. L <sub>70</sub> projected life of over 130,000 hours at 50°C. Tested in accordance with LM-80. Ten year warranty on LED boards against operational defects.
<b>Listings</b>	UL, C.UL., Damp optional, Wet optional.
<b>Lifetime Warranty</b>	Luminaire LED Incorporated will repair or replace any fixture damaged due to vandalism for the lifetime of the installation.

## DIMENSIONAL DATA

	A	B	C
LVP58	8.55	5.95	5.50
LPL58	8.69	6.25	6.00
WVP58	8.75	6.31	6.00
WVPH58	6.19	9.00	6.00



## ORDERING INFORMATION

SERIES	LED	CCT	VOLTS	DRIVER	LENS	COLOR	OPTIONS	TX/SD
LVP58	5W	2700K	120-277	CC	CP	BLK	PC	
LPL58	15W	3000K		DIM	OP	WHT	GLR	
WVP58		3500K				BRZ	DIM	
WVP58		4000K				GRY	WET	
		5000K					DAMP	
							4	
							ST/SC	

CC = Constant Current (Standard)

DIM = 0-10V Dimming, 10% at lowest level

## OPTIONS

LENS	CP = Clear Prismatic Standard	OP = Opal Optional		
COLORS	BLK = Black	WHT = White	BRZ = Bronze	GRY = Gray
PC	Photoelectric switch.			
GLR	Fuse and fuse holder.			
DIM	0-10V Dimming driver. 10% at lowest level.			
WET	Silicone and neoprene gasketing for wet location. Surface mount only.			
DAMP	Closed cell neoprene gasketing as required for UL damp location listing.			
4	Four TORX® head screws. Available with LVP58 only.			
ST/SC	Phillips head screws instead of TORX® head.			
TX/SD	TORX® head bit.			

## VISOR OPTIONS

LPL58



WVP58



WVP58

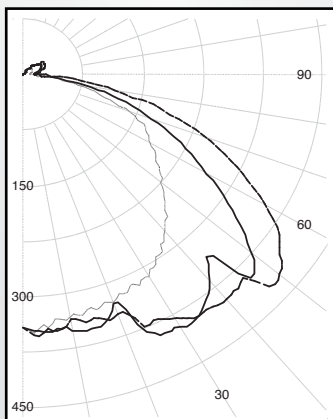


## PHOTOMETRIC DATA

Model	Watts	Input Watts	Delivered Lumens		Delivered Lumens		Delivered Lumens		Delivered Lumens		Delivered Lumens	
			Clear	Opal	Clear	Opal	Clear	Opal	Clear	Opal	Clear	Opal
			2700K		3000K		3500K		4000K		5000K	
LVP58	15W	13.5W	1685	1184	1703	1197	1739	1221	1793	1260	1846	1298
LPL58	15W	13.5W	1169	822	1182	831	1207	848	1245	875	1282	901

### MODEL LVP58-15W-4000K-CP

Delivered Lumens: 1,660 Lumens



### IES FILE: LVP58-15W-4000K-CP

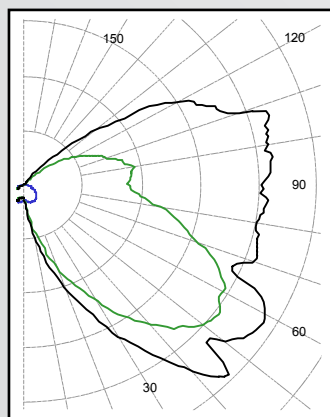
Total Power: 13.5W

Testing was performed in accordance with IES LM-79-08

Zone	Lumens	% Lamps
0 - 30	296	17.8
0 - 40	527	31.8
0 - 60	1100	66.3
60 - 90	458	27.6
0 - 90	1557	93.8
90 - 180	103	6.2
0 - 180	1660	100.0

### MODEL WVP58-15W-4000K-CP

Delivered Lumens: 1,118 Lumens



### IES FILE: WVP58-15W-4000K-CP

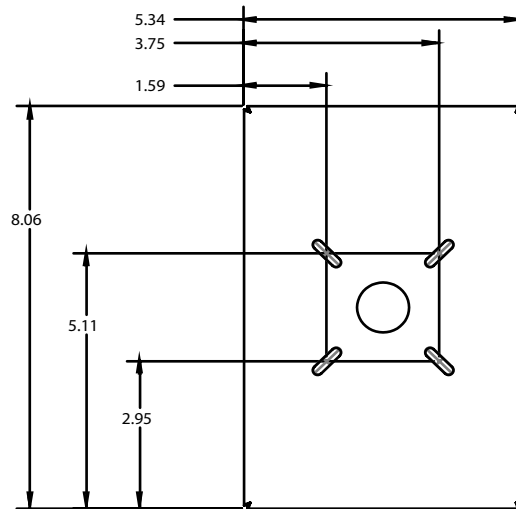
Total Power: 14.2W

Testing was performed in accordance with IES LM-79-08

Zone	Lumens	% Lamps
0 - 30	72	6.1
0 - 40	163	13.7
0 - 60	450	37.9
60 - 90	390	32.8
0 - 90	840	70.7
90 - 180	348	29.3
0 - 180	1188	100.0

## MOUNTING PLATE DETAILS

## A/B Housing



## KO Detail

