



WALL /CEILING MOUNT  
LED

ARV13 HO

BRV13 HO

CRV13 HO

Vandal Resistant

NRV13 HO

XRV13 HO

YRV13 HO

High Output LED

Fixture Type

Date

Job Name

Approved By

Catalog Number

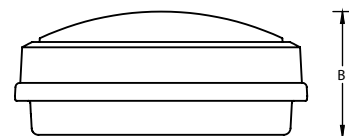
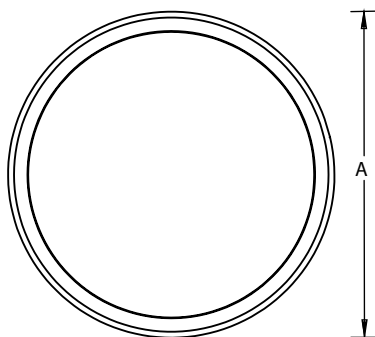
## SPECIFICATIONS



<b>Description</b>	The Anyx 13 LED fixtures build on the highly successful Anyx line. The Anyx 13 series features a durable, color-impregnated polycarbonate housing supported by a marine grade, die cast aluminum base plate to provide a lighting fixture that will survive in the harshest environments.
<b>Trim</b>	One piece injection molded UV stabilized polycarbonate mechanically interlocked to base plate and sealed against moisture and contaminants with two high temperature silicone O-rings. Color is molded through entire part for scratch resistant finish. Locked in place with one concealed tamper resistant set screw.
<b>Lens</b>	One piece injection molded opal prismatic polycarbonate with minimum 0.130" wall thickness. Secured to base plate by trim and sealed with two high temperature silicone O-rings.
<b>Reflector</b>	Die formed heavy gauge aluminum, shaped for maximum efficiency.
<b>Base Plate</b>	Pressure die cast marine grade aluminum. Chemically primed and finished with electrostatically applied polyester powder coat.
<b>Drivers</b>	Constant current drivers, 120-277V.
<b>LED</b>	Samsung LM561B+ Series @ 2700K, 3000K, 3500K, 4000K, 5000K and 82 CRI wired in parallel-series. L <sub>70</sub> projected life of 130,000 hours at 50°C. Tested in accordance with LM-80. Ten year warranty on LED boards against operational defects.
<b>Gaskets</b>	Closed cell die cut neoprene gasket provided between fixture mounting plate and mounting surface. High temperature silicone O-ring between the trim and lens; between the lens and base plate; and between the mounting plate and base plate.
<b>Listings</b>	U.L., C.U.L., Wet standard. 1598a Marine Listed.
<b>Lifetime Warranty</b>	Luminaire LED Incorporated will repair or replace any fixture damaged due to vandalism for the lifetime of the installation.

## DIMENSIONAL DATA

	A	B
ARV13 HO	13.13	5.60
BRV13 HO	13.13	5.75
CRV13 HO	13.13	5.75
NRV13 HO	13.13	5.75
XRV13 HO	13.13	5.75
YRV13 HO	13.13	5.75



## ORDERING INFORMATION

SERIES	LED	CCT	DRIVER	VOLTS	LENS	COLOR	OPTIONS		TX/SD
ARV 13 HO	50W	2700K	CC	120-277	CP	BLK	DIM	KO	
BRV 13 HO		3000K	DIM		OP	WHT	PC	EMB310	
CRV 13 HO		3500K	PRD			BRZ	GLR	EMB125R	
NRV 13 HO		4000K				GRY	AMBNL	EMB250R	
XRV 13 HO		5000K				CUST	REDNL	EMB375R	
YRV 13 HO							OCC		
							OCCFA		

CC = Constant Current (Standard)

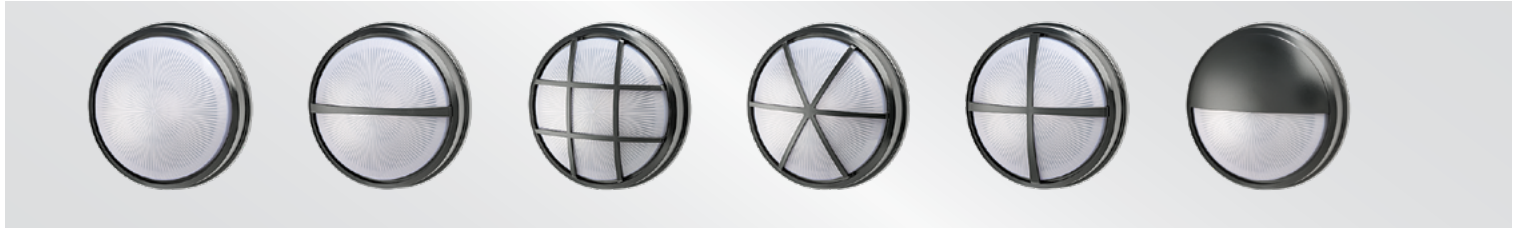
DIM = 0-10V Dimming, 10% at lowest level

PRD = Programmable driver. Specify Watts or Lumens in Ordering Information.

## OPTIONS

LENS	CP = Clear Prismatic Standard	OP = Opal Optional			
COLORS	BLK = Black	WHT = White	BRZ = Bronze	GRY = Gray	CUST = Custom Color (Consult Factory)
DIM	0-10V dimming driver. 10% at lowest level.				
PC	Photoelectric switch (SHCAB option required and included).				
GLR	Fuse and fuse holder.				
AMBNL	Ring of Avago PLCC-4 Amber Series measured at 593nm, wired in parallel-series. Requires separately controlled circuit.				
REDNL	Ring of Avago PLCC-4 Red Series measured at 621nm, wired in parallel-series. Requires separately controlled circuit.				
OCC	Microwave occupancy sensor mounted behind the lens. On/Off operation only. Consult factory for availability in select models.				
OCCFA	Microwave occupancy sensor mounted behind the lens. All LED boards sensed to dim to 50%, 30%, 20%, or 10% field selectable low levels. Factory standard preset of 50% dimming level and 20 minute time out.				
KO	Add (3) 1/2" i.p.t. holes for conduit entry in housing.				
EMB310	800 lumen self contained, 90 minute emergency battery pack. 0°C (32°F) to 55°C (131°F). Not available in 347V. Meets CA Title 20 Standards.				
EMB125R	Stand-alone inverter that will operate a 125W maximum load for 90 minutes. 20°C (68°F) to 30°C (86°F).				
EMB250R	Stand-alone inverter that will operate a 250W maximum load for 90 minutes. 20°C (68°F) to 30°C (86°F).				
EMB375R	Stand-alone inverter that will operate a 375W maximum load for 90 minutes. 20°C (68°F) to 30°C (86°F).				
TX/SD	TORX® head bit.				

## TRIM OPTIONS



ARV

BRV

CRV

NRV

XRV

YRV

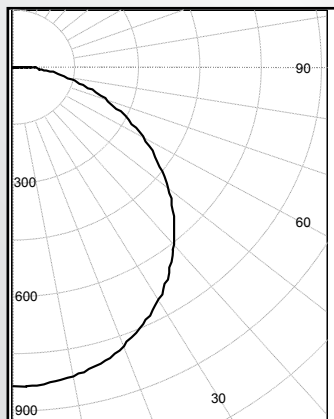
## PHOTOMETRIC DATA

Model	Watts	Input Watts	Lens	Delivered Lumens									
					2700K		3000K		3500K		4000K		5000K
ARV13	15W	17.0W	OP		1467		1486		1516		1561		1608
ARV13	15W	17.0W	CP		2021		2047		2089		2151		2215
ARV13	25W	27.5W	OP		2283		2311		2358		2429		2502
ARV13	25W	27.5W	CP		3145		3184		3249		3346		3446
ARV13 HO	50W	55.5W	OP		3859		3908		3987		4106		4229
ARV13 HO	50W	55.5W	CP		5317		5383		5493		5657		5826
YRV13	15W	16.6W	OP		705		714		728		751		774
YRV13	15W	16.6W	CP		972		983		1003		1035		1066
YRV13	25W	26.8W	OP		1097		1113		1132		1168		1202
YRV13	25W	26.8W	CP		1512		1533		1560		1609		1657
YRV13 HO	50W	54.0W	OP		2052		2081		2116		2184		2247
YRV13 HO	50W	54.0W	CP		2827		2866		2917		3008		3098
ARV13 OCC	20W	19.4W	OP		1815		1833		1872		1931		1988
ARV13 OCC	20W	19.4W	CP		2498		2525		2579		2658		2737
ARV13HO OCC	35W	36.2W	OP		3394		3429		3500		3611		3718
ARV13HO OCC	35W	36.2W	CP		4673		4721		4822		4972		5119
ARV 13HO	PRD		Programmable Driver. Specify Wattage or Delivered Lumens in Ordering Information										

## PHOTOMETRIC DATA

### MODEL ARV13-25W-4000K-OP

Delivered Lumens: 2465 Lumens



### IES FILE: ARV13-25W-4000K-OP

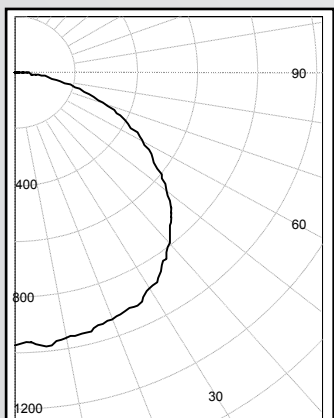
Total Power: 27.5W

Testing was performed in accordance with IES LM-79-08

Zone	Lumens	% Lamps
0 - 30	648	26.3
0 - 40	1059	42.9
0 - 60	1862	75.5
60 - 90	571	23.2
0 - 90	2433	98.7
90 -180	32	1.3
0 - 180	2465	100.0

### MODEL ARV13-25W-3500K-CP

Delivered Lumens: 3318 Lumens



### IES FILE: ARV13-25W-3500K-CP

Total Power: 27.3W

Testing was performed in accordance with IES LM-79-08

Zone	Lumens	% Lamps
0 - 30	786	25.2
0 - 40	1315	42.2
0 - 60	2382	76.4
60 - 90	712	22.8
0 - 90	3094	99.2
90 -180	25	0.8
0 - 180	3118	100.0

## MOUNTING PLATE DETAILS

