



WALL /CEILING MOUNT
LED

Fixture Type

Date

Job Name

Approved By

Catalog Number

SPECIFICATIONS

ADA Compliant

Description The Anyx 13 LED fixtures build on the highly successful Anyx line. The Anyx 13 series features a durable, color-impregnated polycarbonate housing supported by a marine grade, die cast aluminum base plate to provide a lighting fixture that will survive in the harshest environments. The Anyx 13 series has been installed successfully in large scale projects such as dorm rooms, behavioral health facilities, transportation stations and public schools.



Trim One piece injection molded UV stabilized polycarbonate mechanically interlocked to base plate and sealed against moisture and contaminants with two high temperature silicone O-rings. Color is molded through entire part for scratch resistant finish. Locked in place with one concealed tamper resistant set screw.



Lens One piece injection molded prismatic polycarbonate with minimum 0.130" wall thickness. Secured to base plate by trim and sealed with two high temperature silicone O-rings.

Reflector Die formed heavy gauge specular aluminum, shaped for maximum efficiency.

Base Plate Pressure die cast marine grade aluminum. Chemically primed and finished with electrostatically applied polyester powder coat.

Drivers Constant current drivers, 120-277V.

LED Samsung LM561B+ Series @ 2700K, 3000K, 3500K, 4000K, 5000K and 82 CRI wired in parallel-series. L₇₀ projected life of 130,000 hours at 50°C. Tested in accordance with LM-80. Ten year warranty on LED boards against operational defects.

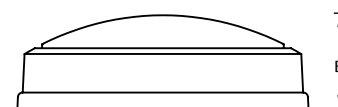
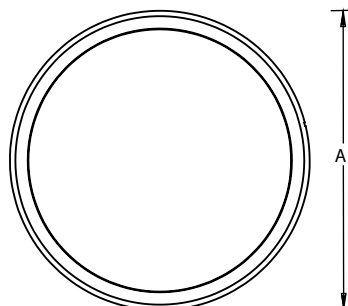
Gaskets Closed cell die cut neoprene gasket provided between fixture mounting plate and mounting surface. High temperature silicone O-ring between the trim and lens, between the lens and base plate, and between the mounting plate and base plate.

Listings U.L., C.UL., Wet standard. 1598a Marine Listed. Please check the DLC Qualified Products List www.designlights.org/QPL for listed configuration details.

Lifetime Warranty Luminaire LED Incorporated will repair or replace any fixture damaged due to vandalism for the lifetime of the installation.

DIMENSIONAL DATA

	A	B
ARV13	13.13	3.85
BRV13	13.13	4.00
CRV13	13.13	4.00
NRV13	13.13	4.00
XRV13	13.13	4.00
YRV13	13.13	4.00



ORDERING INFORMATION

SERIES	LED	CCT	DRIVER	VOLTS	LENS	COLOR	OPTIONS		TX/SD
ARV 13	15W	2700K	CC	120-277	CP	BLK	DIM	ALMR	
BRV 13	25W	3000K	DIM		OP	WHT	PC	SHCAB	
CRV 13		3500K	PRD			BRZ	GLR	EMB310	
NRV 13		4000K				GRY	OCC	EMB20R	
XRV 13		5000K				CUST	OCCFA	EMB125R	
YRV 13							REDNL	EMB250R	
							AMBNL	EMB375R	

CC = Constant Current (Standard)

DIM = 0-10V Dimming, 10% at lowest level

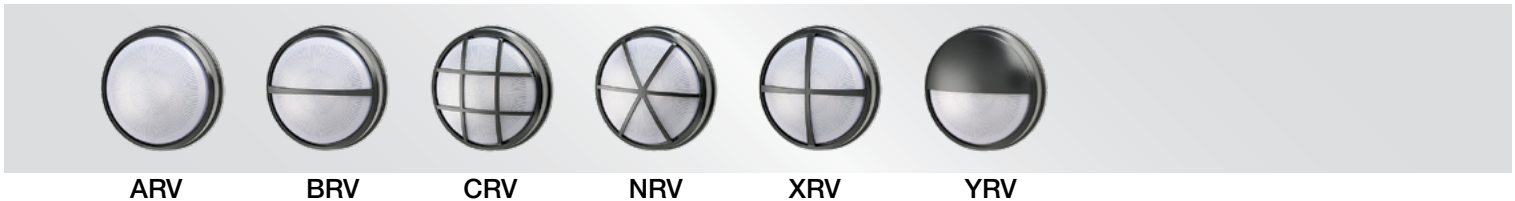
PRD = Programmable driver. Specify Watts or Lumens in Ordering Information.

OPTIONS

LENS	CP = Clear Prismatic	OP = Opal Prismatic			
COLORS	BLK = Black	WHT = White	BRZ = Bronze	GRY = Gray	CUST = Custom Color (Consult Factory)
DIM	0-10V dimming driver. 10% at lowest level.				
PC	Photoelectric switch (requires SHCAB option).				
GLR	Fuse and fuse holder.				
OCC	Microwave occupancy sensor mounted behind the lens. All LED boards sensed on/off.				
OCCFA	Microwave occupancy sensor mounted behind the lens. All LED boards sensed to dim to 50%, 30%, 20%, or 10% field selectable low levels. Factory standard preset of 50% dimming level and 20 minute time out.				
REDNL	Ring of Avago PLCC-4 RED Series measured at 621nm, wired in parallel-series. Requires serarately controlled circuit.				
AMBNL	Ring of Avago PLCC-4 Amber Series measured at 593nm, wired in parallel-series. Requires separately controlled circuit.				
ALMR	Accessory metal ring that completely seals gap between mounting base and mounting surface. Anti-ligature for ceiling mount applications only.				
SHCAB	Low profile pressure die cast marine grade aluminum back box. Provided with (3) 1/2 " i.p.t. holes for conduit entry with threaded plugs. Chemically primed and finished with electrostatically applied polyester powder coat.				
EMB310	800 lumen self contained, 90 minute emergency battery pack. 0°C (32°F) to 55°C (131°F). Not available in 347V. Included in the standard, surface mount fixture profile and will maintain ADA compliance. Meets CA Title 20 Standards.				
EMB20R	Remote mounted micro inverter that will operate a 25W maximum load for 90 minutes. 0°C (32°F) to 45°C (113°F).				
EMB125R	Stand-alone inverter that will operate a 125W maximum load for 90 minutes. 20°C (68°F) to 30°C (86°F).				
EMB250R	Stand-alone inverter that will operate a 250W maximum load for 90 minutes. 20°C (68°F) to 30°C (86°F).				
EMB375R	Stand-alone inverter that will operate a 375W maximum load for 90 minutes. 20°C (68°F) to 30°C (86°F).				
TX/SD	TORX® head bit.				



TRIM OPTIONS



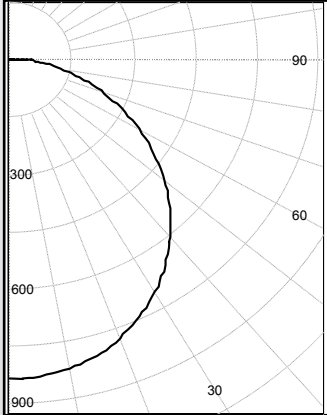
PHOTOMETRIC DATA

Model	Watts	Input Watts	Lens	Delivered Lumens					
				2700K	3000K	3500K	4000K	5000K	
ARV13	15W	17.0W	OP	1467	1486	1516	1561	1608	
ARV13	15W	17.0W	CP	2021	2047	2089	2151	2215	
ARV13	25W	27.5W	OP	2283	2311	2358	2429	2502	
ARV13	25W	27.5W	CP	3145	3184	3249	3346	3446	
ARV13 HO	50W	55.5W	OP	3859	3908	3987	4106	4229	
ARV13 HO	50W	55.5W	CP	5317	5383	5493	5657	5826	
YRV13	15W	16.6W	OP	705	714	728	751	774	
YRV13	15W	16.6W	CP	972	983	1003	1035	1066	
YRV13	25W	26.8W	OP	1097	1113	1132	1168	1202	
YRV13	25W	26.8W	CP	1512	1533	1560	1609	1657	
YRV13 HO	50W	54.0W	OP	2052	2081	2116	2184	2247	
YRV13 HO	50W	54.0W	CP	2827	2866	2917	3008	3098	
ARV13 OCC	20W	19.4W	OP	1815	1833	1872	1931	1988	
ARV13 OCC	20W	19.4W	CP	2498	2525	2579	2658	2737	
ARV13HO OCC	35W	36.2W	OP	3394	3429	3500	3611	3718	
ARV13HO OCC	35W	36.2W	CP	4673	4721	4822	4972	5119	
ARV13	PRD			Programmable driver. Specify Watts or Lumens in Ordering Information.					

PHOTOMETRIC DATA

MODEL ARV13-25W-4000K-OP

Delivered Lumens: 2465 Lumens



IES FILE: ARV13-25W-4000K-OP

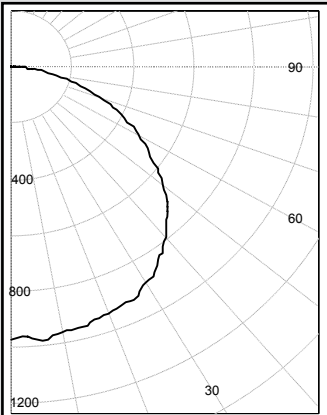
Total Power: 27.5W

Testing was performed in accordance with IES LM-79-08

Zone	Lumens	% Lamps
0 - 30	648	26.3
0 - 40	1059	42.9
0 - 60	1862	75.5
60 - 90	571	23.2
0 - 90	2433	98.7
90 - 180	32	1.3
0 - 180	2465	100.0

MODEL ARV13-25W-3500K-CP

Delivered Lumens: 3318 Lumens



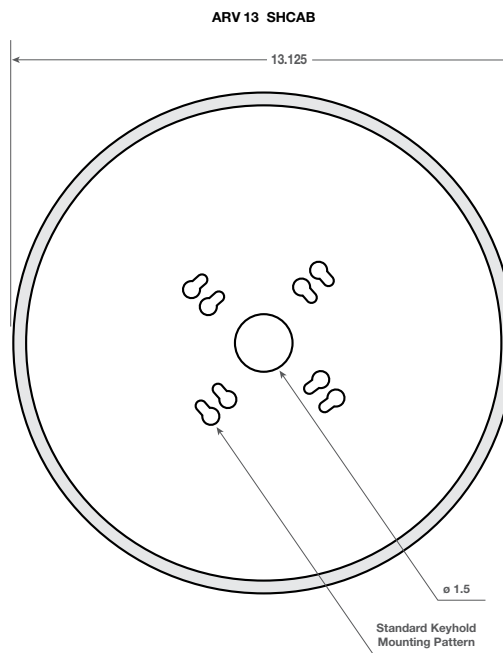
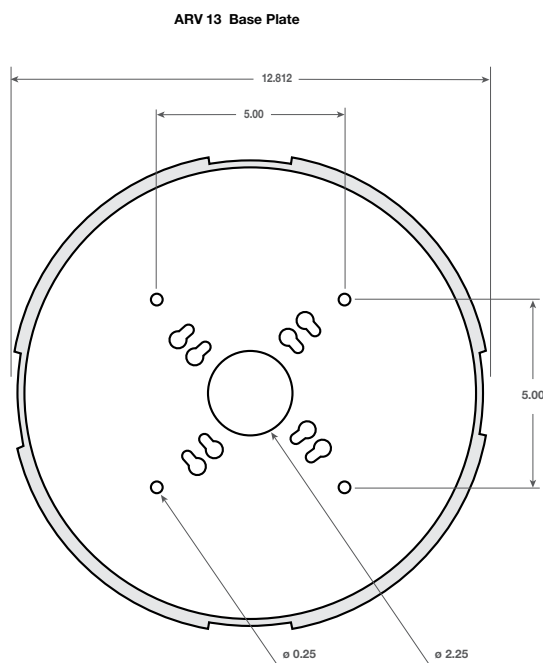
IES FILE: ARV13-25W-3500K-CP

Total Power: 27.3W

Testing was performed in accordance with IES LM-79-08

Zone	Lumens	% Lamps
0 - 30	786	25.2
0 - 40	1315	42.2
0 - 60	2382	76.4
60 - 90	712	22.8
0 - 90	3094	99.2
90 - 180	25	0.8
0 - 180	3118	100.0

MOUNTING PLATE DETAILS



ARV 13 KO

