



WALL /CEILING MOUNT  
Amber LED

# ANYX 13

Vandal Resistant

ARV13 BRV13 CRV13 NRV13 XRV13 YRV13

ARV 13 Series LED  
Turtle & Observatory Friendly

Fixture Type	Date
Job Name	Approved By
Catalog Number	

## SPECIFICATIONS

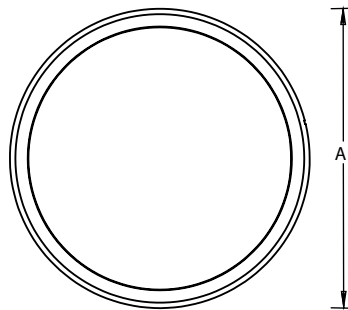
ADA Compliant

- Description** The Anyx 13 LED fixtures build on the highly successful Anyx line. The Anyx 13 series features a durable, color-impregnated polycarbonate housing supported by a marine grade, die cast aluminum base plate to provide a lighting fixture that will survive in the harshest environments. The Anyx 13 series has been installed successfully in large scale projects such as dorm rooms, unsecured hallways, transportation stations and public schools.
- Trim** One piece injection molded UV stabilized polycarbonate mechanically interlocked to base plate and sealed against moisture and contaminants with two high temperature silicone O-rings. Color is molded through entire part for scratch resistant finish. Locked in place with one concealed tamper resistant set screw.
- Lens** One piece injection molded opal prismatic polycarbonate with minimum 0.130" wall thickness. Secured to base plate by trim and sealed with two high temperature silicone O-rings.
- Reflector** Die formed heavy gauge specular aluminum, shaped for maximum efficiency.
- Base Plate** Pressure die cast marine grade aluminum. Chemically primed and finished with electrostatically applied polyester powder coat.
- Drivers** Constant current drivers, 120-277V.
- LED** Avago PLCC-4 Amber Series, wired in parallel-series. Single-frequency, measured at 593nm. Ten year warranty on LED boards against operational defects.
- Gaskets** Closed cell die cut neoprene gasket provided between fixture mounting plate and mounting surface. High temperature silicone O-ring between the trim and lens, between the lens and base plate, and between the mounting plate and base plate.
- Listings** U.L., C.U.L., Wet standard. 1598a Marine Listed.
- Lifetime Warranty** Luminaire LED Incorporated will repair or replace any fixture damaged due to vandalism for the lifetime of the installation.



## DIMENSIONAL DATA

	A	B
ARV13	13.13	3.85
BRV13	13.13	4.00
CRV13	13.13	4.00
NRV13	13.13	4.00
XRV13	13.13	4.00
YRV13	13.13	4.00



## ORDERING INFORMATION

SERIES	LED	VOLTS	LENS	COLOR	OPTIONS		TX/SD
ARV 13	15W Amber	120-277	CP	BLK	PC	EMB310	
BRV 13	25W Amber		OP	WHT	GLR	EMB20R	
CRV 13				BRZ	ALMR	EMB125R	
NRV 13				GRY	SHCAB	EMB250R	
XRV 13				CUST		EMB375R	
YRV 13							

## OPTIONS

LENS	CP = Clear Prismatic Standard	OP = Opal Optional			
COLORS	BLK = Black	WHT = White	BRZ = Bronze	GRY = Gray	CUST = Custom Color (Consult Factory)
PC	Photoelectric switch (requires SHCAB option).				
GLR	Fuse and fuse holder.				
ALMR	Accessory metal ring that completely seals gap between mounting base and mounting surface. Anti-ligature for ceiling mount applications only.				
SHCAB	Low profile pressure die cast marine grade aluminum back box. Provided with (3) 1/2 " i.p.t. holes for conduit entry with threaded plugs. Chemically primed and finished with electrostatically applied polyester powder coat.				
EMB310	800 lumen self contained, 90 minute emergency battery pack. 0°C (32°F) to 55°C (131°F). Included in the standard, surface mount fixture profile and will maintain ADA compliance. Meets CA Title 20 Standards.				
EMB20R	Remote mounted micro inverter that will operate a 25W maximum load for 90 minutes. 0°C (32°F) to 45°C (113°F).				
EMB125R	Stand-alone inverter that will operate a 125W maximum load for 90 minutes. 20°C (68°F) to 30°C (86°F).				
EMB250R	Stand-alone inverter that will operate a 250W maximum load for 90 minutes. 20°C (68°F) to 30°C (86°F).				
EMB375R	Stand-alone inverter that will operate a 375W maximum load for 90 minutes. 20°C (68°F) to 30°C (86°F).				
TX/SD	TORX® head bit.				

## TRIM OPTIONS



ARV

BRV

CRV

NRV

XRV

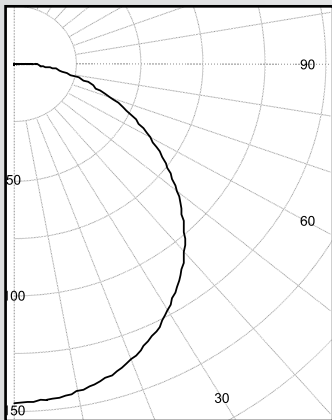
YRV

## PHOTOMETRIC DATA

Model	Watts	Input Watts		Lens		Delivered Lumens
ARV13	15W Amber	16.7W		OP		274
ARV13	15W Amber	16.7W		CP		378
ARV13	25W Amber	27.2W		OP		427
ARV13	25W Amber	27.2W		CP		588

### MODEL ARV13-25W-AMBER-OP

Delivered Lumens: 3318 Lumens



### IES FILE: ARV13-25W-AMBER-OP

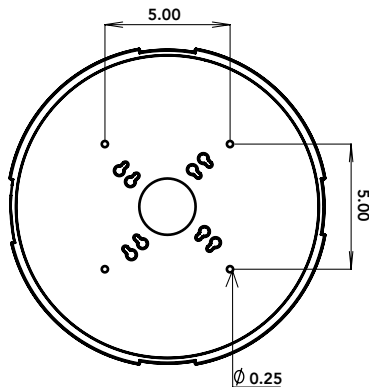
Total Power: 27.3W

Testing was performed in accordance with IES LM-79-08

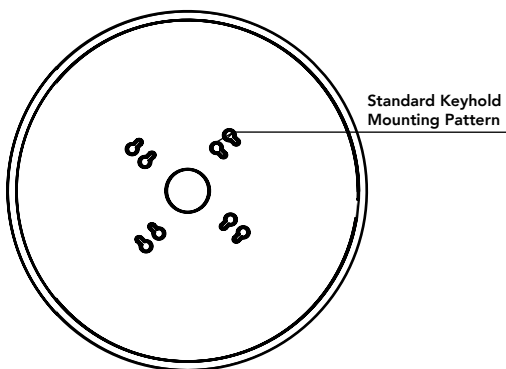
Zone	Lumens	% Lamps
0 - 30	113	26.5
0 - 40	185	43.2
0 - 60	324	75.9
60 - 90	98	22.9
0 - 90	422	98.8
90 - 180	5	1.2
0 - 180	427	100.0

## MOUNTING PLATE DETAILS

Base Plate



SHCAB



SHCAB KO DETAIL

