

# JUDGE 524

Vandal Resistant

LVP524 Series LED



Fixture Type

Date

Job Name

Approved By

Catalog Number

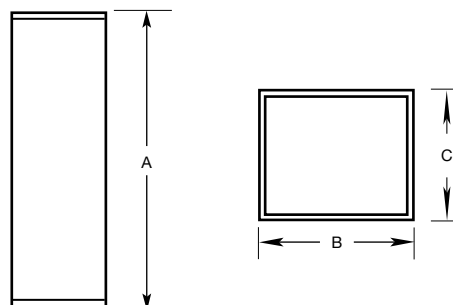
## SPECIFICATIONS



<b>Description</b>	The Judge series provides vandal resistant construction at a cost-effective price point. These fixtures feature our lifetime warranty against vandalism and have been proven in thousands of installations over decades of use.
<b>Housing</b>	Die formed 16 gauge cold rolled zinc coated steel. Finished with electrostatically applied white polyester powder coat.
<b>Lens</b>	One piece prismatic polycarbonate with minimum 1/8" wall thickness.
<b>End Caps</b>	Die formed 16 gauge cold rolled steel secured to housing with (3) stainless steel TORX® head screws. Finished with white polyester powder coat. Provisions for surface conduit entry are optional.
<b>Driver</b>	Constant current driver, 120-277V. 347V optional.
<b>LED</b>	Samsung LM561B+ series @ 2700K, 3000K, 3500K, 4000K, or 5000K and 82 CRI wired in parallel-series. L <sub>70</sub> projected life of over 130,000 hours at 50°C. Ten year warranty on LED boards against operational defects.
<b>Listings</b>	UL, C.UL., Damp optional, Wet optional.
<b>Lifetime Warranty</b>	Luminaire LED Incorporated will repair or replace any fixture damaged due to vandalism for the lifetime of the installation.

## DIMENSIONAL DATA

	A	B	C
LVP522	24.23	4.63	4.38
LVP523	36.14	4.63	4.38
LVP524	48.31	4.63	4.38



## ORDERING INFORMATION

SERIES	LED	CCT	VOLTS	DRIVER	LENS	COLOR	OPTIONS		TX/SD
									TX/SD
LVP522	15W	2700K	120-277	CC	CP	WHT	DIM	KO	
	25W	3000K	347	DIM			PC	JB	
LVP523	20W	3500K		PRD			GLR	EMB310	
	40W	4000K					OCC	EMB125R	
LVP524	25W	5000K					OCC50	EMB250R	
	50W						OCCFA	EMB375R	
							DAMP	ST/SC	
	PRD: Specify Watts or Lumens Above						WET		

CC = Constant Current (Standard)

DIM = 0-10V Dimming, 10% at lowest level

PRD = Programmable driver. Specify Lumens or Watts. Consult factory.



## OPTIONS

LENS	CP = Clear Prismatic Standard
COLORS	WHT = White
DIM	0 - 10V dimming driver. 10% at lowest level.
PC	Photoelectric switch.
GLR	Fuse and fuse holder.
OCC	Microwave occupancy sensor mounted behind the lens. Consult factory for availability in select models.
OCC50	Microwave occupancy sensor mounted behind the lens. 50% of LED's constantly on and 50% sensed.
OCCFA	Microwave occupancy sensor mounted behind the lens. All LED boards sensed to dim to 50%, 30%, 20%, or 10% field selectable low levels. Factory standard preset of 50% dimming level and 20 minute time out.
DAMP	Closed cell neoprene gasketing as required for UL damp location listing.
WET	Silicone and neoprene gasketing for wet location for covered ceilings only.
KO	Optional mouse hole in end cap for accessing 1/2" knockout. Specify (1) knockout or (2) knockouts.
JB	Steel joiner band for continuous row mount.
EMB310	1,200 delivered lumen, 90 minute self contained emergency battery pack. 0°C (32°F) to 55°C (131°F). Not available in 347V. Metts CA Title 20 Standards
EMB125R	Stand-alone inverter that will operate a 125W maximum load for 90 minutes. 20°C (68°F) to 30°C (86°F). Not available in 347V.
EMB250R	Stand-alone inverter that will operate a 250W maximum load for 90 minutes. 20°C (68°F) to 30°C (86°F). Not available in 347V.
EMB375R	Stand-alone inverter that will operate a 375W maximum load for 90 minutes. 20°C (68°F) to 30°C (86°F). Not available in 347V.
ST/SC	Phillips head screws instead of TORX® head.
TX/SD	TORX® head bit.

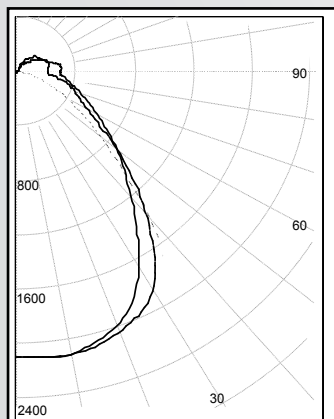


## PHOTOMETRIC DATA

Model	Watts	Input Watts	Delivered Lumens				
			2700K	3000K	3500K	4000K	5000K
LVP522	15W	13.4W	1497	1513	1544	1593	1640
LVP522	25W	26.8W	2994	3026	3089	3186	3281
LVP523	20W	20.1W	2246	2270	2317	2390	2461
LVP523	40W	40.3W	4503	4552	4647	4791	4936
LVP524	25W	26.8W	2994	3026	3089	3186	3281
LVP524	50W	53.7W	6000	6065	6192	6384	6576
LVP52x	PRD		Programmable Driver. Specify Watts or Lumens in Ordering Information				

### MODEL LVP524-50W-4000K-CP

Delivered Lumens: 5,912 Lumens



### IES FILE: LVP524-50W-4000K-CP

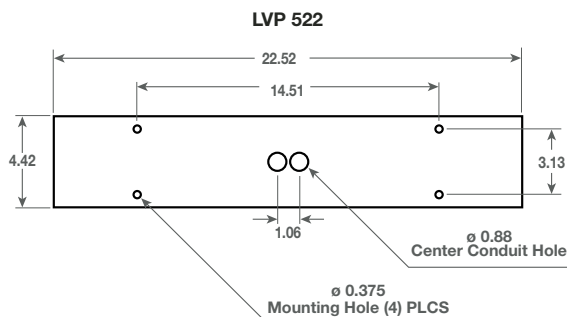
Total Power: 53.7W

Testing was performed in accordance with IES LM-79-08

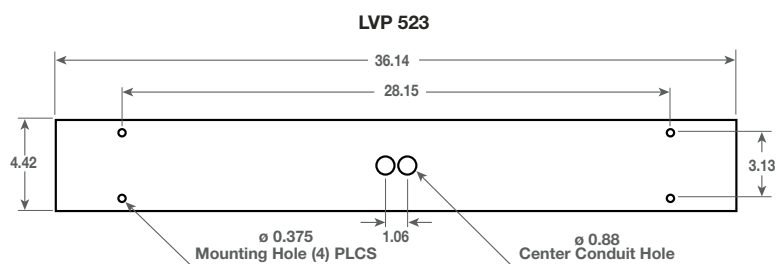
Zone	Lumens	% Lamps
0 - 30	1629	27.5
0 - 40	2614	44.2
0 - 60	4042	68.4
60 - 90	1033	17.5
0 - 90	5076	85.9
90 - 180	836	14.1
0 - 180	5912	100.0

## MOUNTING PLATE DETAILS

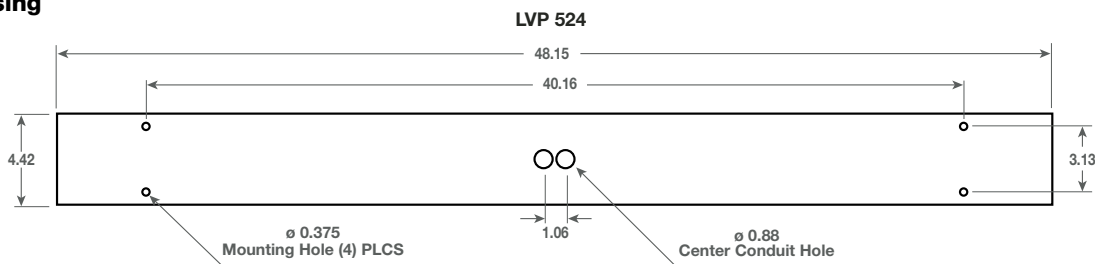
### 24" Housing



### 36" Housing



### 48" Housing



### LVP 524 KO Detail

