

WALL /CEILING/  
PENDANT MOUNT  
LAMPS: T5, T5HO, T8

Fixture Type

Date

Job Name

Approved By

Catalog Number

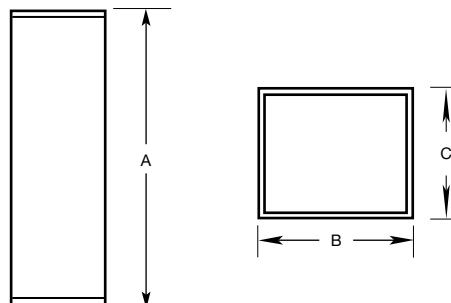
## SPECIFICATIONS



<b>Description</b>	The Judge series provides vandal resistant construction at a cost effective price point. These fixtures feature our lifetime warranty against vandalism and have been proven in thousands of installations over decades of use. A wide variety of lamp sources are available and integral emergency battery operation enhances the available applications for the Judge series.
<b>Housing</b>	Die formed 16 gauge cold rolled zinc coated steel. Finished with electrostatically applied white polyester powder coat.
<b>Lens</b>	One piece prismatic polycarbonate with minimum 1/8" wall thickness.
<b>End Caps</b>	Die formed 16 gauge cold rolled steel secured to housing with (3) stainless steel TORX® head screws. Finished with white polyester powder coat. Provisions for surface conduit entry are optional.
<b>Ballast</b>	Electronic high frequency ballast with less than 10% total harmonic distortion, 120-277V only. 347V optional.
<b>Sockets</b>	Medium bi-pin secured to fixture housing with machine screws and nuts.
<b>UL Listing</b>	U.L., C.U.L., Damp optional , Wet optional.
<b>Lifetime Warranty</b>	Luminaire LED, Incorporated will repair or replace any fixture damaged due to vandalism for the lifetime of the installation.

## DIMENSIONAL DATA

	A	B	C
LVP522HO	22.23	4.63	4.38
LVP522	24.33	4.63	4.38
LVP523	36.31	4.63	4.38
LVP524HO	46.31	4.63	4.38
LVP524	48.31	4.63	4.38



## ORDERING INFORMATION

SERIES	LAMPS		VOLTS	LENS	COLOR	OPTIONS		TX/SD
	(Not Included)							TX/SD
LVP522 HO - 22"	22" - 1F14T5	46" - 1F28T5	120-277	CP	WHT	PC	KO	
LVP524HO - 46"	22" - 2F14T5	46" - 2F28T5	347			GLR	EMB50	
LVP522 - 24"	22" - 1F24T5HO	46" - 1F54T5HO				PRS	EMB100	
LVP523 - 36"	22" - 2F24T5HO	46" - 2F54T5HO				CW	EMB600	
LVP524 - 48"	24" - 1F17T8	48" - 1F32T8				NL	ST/SC	
	24" - 2F17T8	48" - 2F32T8				JB		
	36" - 1F25T8					DAMP		
	36" - 2F25T8					WET		

## OPTIONS

LENS	CP = Clear Prismatic Standard
COLORS	WHT = White
PC	Photoelectric switch.
GLR	Fuse and fuse holder.
PRS	Programmed rapid start ballast.
CW	Cold Weather instant start ballast, -20°F minimum starting temperature. Available for 24" and 48" lengths.
NL	PL 5/7 night light (lamp not included).
JB	Steel joiner band for continuous row mount.
DAMP	Closed cell neoprene gasketing as required for UL damp location listing.
WET	Silicone and neoprene gasketing as required for UL wet location listing for covered ceilings only.
KO	Optional mouse hole in end cap for accessing 1/2" knockout. Specify (1) knockout or (2) knockouts.
EMB50	950-1350 lumen self contained 90 minute emergency battery pack. 0°C (32°F) to 55°C (131°F). Available for 24", 36" and 48" lengths. Not available in 347V.
EMB100	350-450 lumen self contained 90 minute emergency battery pack. 0°C (32°F) to 55°C (131°F). Available for 24", 36" and 48" lengths. Not available in 347V.
EMB600	1025-1250 lumen self contained 90 minute emergency battery pack. 0°C (32°F) to 50°C (122°F). Available for 46" length. Not available in 347V.
ST/SC	Slotted screws instead of TORX® head.
TX/SD	TORX® head bit.

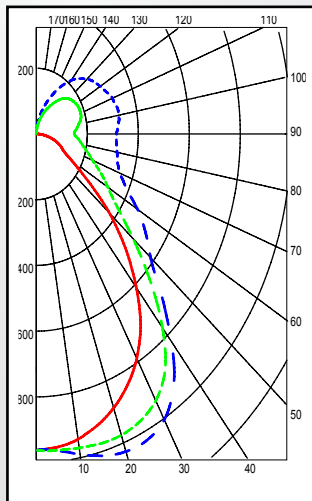


## PHOTOMETRIC DATA

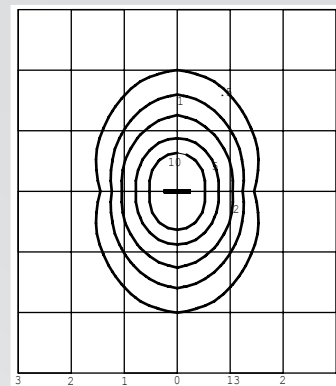
### MODEL LVP524-232-CP

Lamps: Two 32 Watt T8 linear fluorescent lamps rated at 2900 lumens each. Total Efficiency: 61.8%

Mounting Height 6' 7' 8' 9' 10'  
 Multiplying Factor 1.78 1.31 1.00 0.79 0.64

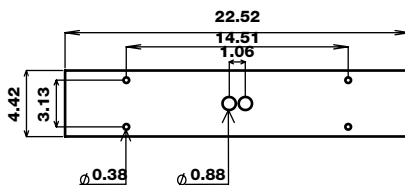


Zone	Lumens	% Lamps	% Fixt.
0 - 30	804	13.9	21.6
0 - 40	1334	23.0	35.9
0 - 60	2158	37.2	58.1
0 - 90	2830	48.8	76.2
90 - 120	528	9.1	14.2
90 - 130	671	11.6	18.1
90 - 150	844	14.6	22.7
90 - 180	886	15.3	23.8
0 - 180	3716	64.1	100.0

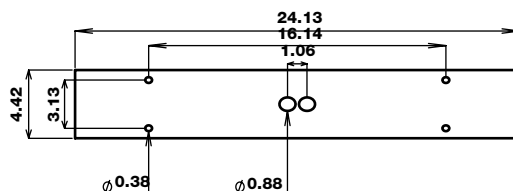


## MOUNTING PLATE DETAILS

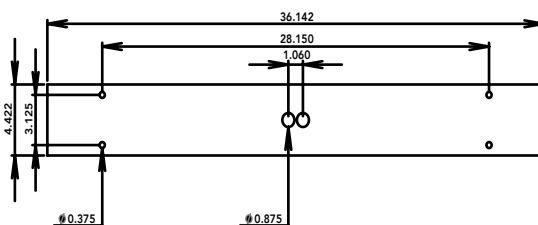
### 22" Housing



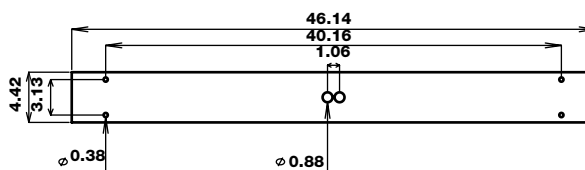
### 24" Housing



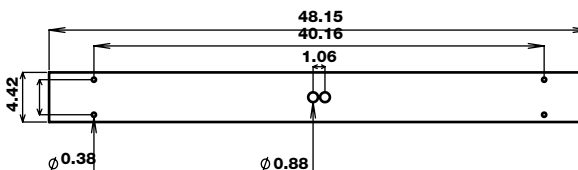
### 36" Housing



### 46" Housing



### 48" Housing



### KO Detail

