

# SUPER MAX

High Security Confinement



**CORNER MOUNT  
LED**

CM12 CM13 CM14

CM Series LED

Fixture Type

Date

Job Name

Approved By

Catalog Number

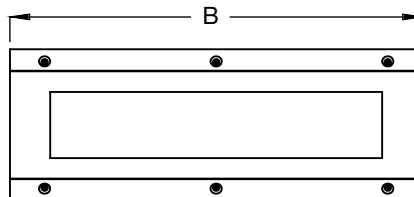
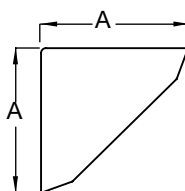
## SPECIFICATIONS



<b>Description</b>	The Super Max Confinement Corner Mount Luminaire is ideally suited for behavioral institutions and correctional facilities. Available options provide suitability for minimum to maximum security locations. A ligature resistant design is standard for all variations of the Corner Mount series. Various materials and lumen outputs are available to satisfy nearly any conceivable institutional requirement.
<b>Housing</b>	One piece die formed housing, available in stainless or cold rolled steels. All corners and seams continuously welded smooth. Hinge design protects from unauthorized fixture entry.
<b>Mounting Plate</b>	Die formed from same material as housing. Integral mounting bosses provide for entrapment of concealed contraband. Provisions for heavy duty hardware for direct mounting to building surface. Integral side locks align housing to mounting plate via locking tabs.
<b>Gear Tray</b>	Field replaceable integral unit containing LED circuit board, driver, reflector, and modular wiring. Optional dimmable driver available. Designed for quick replacement within the cell environment. LED smart board design provides auto-compensate feature to ensure fail safe operation in the event of multiple LED chip failures. High efficacy, long-life mid-power board featuring Samsung 561B+ LED's mounted directly to integral heat sink for maximum thermal dissipation. Available with optional field adjustable LED night lights.
<b>Hinge</b>	Internal welded piano-type hinge (1/4" knuckle/ 1/8" diameter pin) standard. Optional full length hinge available. (CM12 - 12" length; CM13 & CM14 - 24" length)
<b>Lens</b>	As specified up to 1.00" thickness - see ordering information. Clear lens combinations include high efficacy LED diffusion material.
<b>Lens Retention</b>	Vertically adjustable "Z" brackets secure lens to housing via internally welded stainless steel studs and heavy duty hardware.
<b>Fasteners</b>	Hardened tamper resistant security screws with cage nuts. Fully recessed.
<b>Finish</b>	Brushed stainless steel or electrostatically applied white polyester powder coating.
<b>Light Engine Warranty</b>	Ten year warranty on LED boards against operational defects. Driver covered by manufacturer's warranty.
<b>Listings</b>	U.L., C.U.L., Wet location optional.

## DIMENSIONAL DATA

	A	B
CM12	9"	21"
CM13	9"	35"
CM14	9"	49"



www.luminaireled.net

5 Sutton Place  
P.O. Box 2162  
Edison, NJ 08818

P. 732.549.0056  
F. 732.549.9737



Luminaire LED Incorporated products are manufactured in the USA with components purchased from USA suppliers, and meet the Buy American requirements under the ARRA. Content of specification sheets is subject to change; please consult our website for current product information.

Rev: 10/18+

## ORDERING INFORMATION

SERIES	HOUSING	DRIVER	CCT	VOLTS	LENS		OPTIONS	CTX
CM12 9"x 21" -25W	0 - 16ga CRS (Painted)	CC	2700K	120-277	Lamp Side	BLK	GLR	
CM13 9"x 35" - 50W	1 - 14ga CRS (Painted)	DIM	3000K		0 - No Lens	WHT	LEDNL	
CM14 9"x 49" - 80W	2 - 12ga CRS (Painted)	PRD	3500K		A - .125" DR Prismatic Acrylic	BRZ	AMBNL	
	3 - 16ga SS (Brushed)		4000K		B - .125" Prismatic Polycarbonate	GRY	WET	
	4 - 14ga SS (Brushed)		5000K		C - .125" Clear Polycarbonate	SIL	FLH	
	5 - 12ga SS (Brushed)				D - .156" Prismatic Polycarbonate		EMB310	
					D1 - .187" Prismatic Polycarbonate		KO	
					D2 - .187" Prismatic Glass			
					E - .250" Clear Polycarbonate			
					F - .250" Clear Tempered Glass			
					G - .375" Clear Polycarbonate			
					H - .375" Clear Tempered Glass			
					I - .500" Clear Polycarbonate			
					J - .500" Clear Tempered Glass			
					Environmental Side			
					0 - No Lens			
					1 - .125" Clear Polycarbonate			
					2 - .187" Clear Polycarbonate			
					3 - .187" Clear Tempered Glass			
					4 - .250" Clear Acrylic			
					5 - .250" Clear Polycarbonate			
					6 - .250" Clear Tempered Glass			
					7 - .375" Clear Polycarbonate			
					8 - .375" Clear Tempered Glass			
					9 - .500" Clear Polycarbonate			
					10 - .500" Clear Tempered Glass			

CC = Constant Current (Standard)  
 DIM = 0-10V Dimming, 10% at lowest level  
 PRD = Programmable driver. Specify Watts or Lumens. Consult factory.

## OPTIONS

COLORS	BLK = Black	WHT = White	BRZ = Bronze	GRY = Gray	SIL = Silver	CUST = Custom Color (Consult Factory)
*PRD	Programmable driver. When ordering, must specify Watts or Lumens. Consult factory for availability.					
GLR	Fuse and fuse holder.					
LEDNL	LED Night Light with field adjustable levels in 2700K, 3000K, 3500K, 4000K, or 5000K. Requires separately controlled circuit. Consult factory for availability.					
AMBNL	Amber LED Night Light with field adjustable levels with peak wavelength at 593 nm. Requires separately controlled circuit. Consult factory for availability.					
WET	Neoprene gasketing for wet locations.					
FLH	Full length hinge.					
EMB310	800 lumen, 90 minute emergency battery pack. 0°C (32°F) to 55°C (131°F). Available for the CM13 and CM14 only. Meets CA Title 20 Standards.					
KO	Provisions for surface conduit entry. N/A with WET option. Consult factory for availability in select models.					
CTX	TORX® head bit for Confinement Series.					

## PHOTOMETRIC DATA

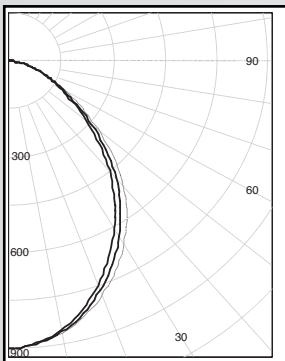
Model	Watts	Input Watts	Delivered Lumens								
			2700K		3000K		3500K		4000K		5000K
CM12	25W	27.1	1753		1753		1790		1846		1901
CM13	50W	54.6	4026		4069		4155		4284		4413
CM14	80W	81.7	5802		5864		5987		6173		6358
CMxx	PRD		Programmable driver. Specify Wattage or Lumens in Ordering Information.								

### MODEL CM12-25W-0-CC-A/4

Delivered Lumens: 1,710 Lumens

Total Power: 27.1W

Testing was performed in accordance with IES LM-79-08



Zone	Lumens	% Lamps
0 - 30	637	37.3
0 - 40	987	57.7
0 - 60	1505	88.0
60 - 90	205	12.0
0 - 90	1710	100.0
90 - 180	0	0.0
0 - 180	1710	100.0

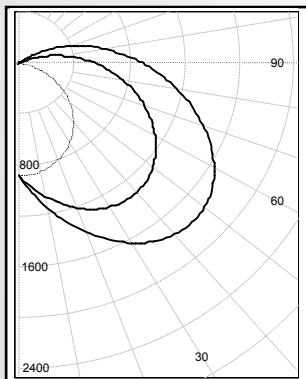
## PHOTOMETRIC DATA

### MODEL CM13-50W-0-CC-A/4

Delivered Lumens: 3,967 Lumens

Total Power: 54.6W

Testing was performed in accordance with IES LM-79-08

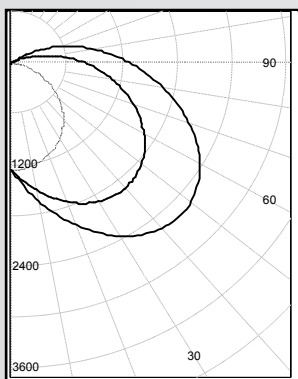


Zone	Lumens	% Lamps
0 - 30	717	18.1
0 - 40	1203	30.3
0 - 60	2293	57.8
60 - 90	1264	31.9
0 - 90	3557	89.7
90 - 180	410	10.3
0 - 180	3967	100.0

### MODEL CM14-80W-7-CC-A/4

Delivered Lumens: 5,716 Lumens

Testing was performed in accordance with IES LM-79-08



Zone	Lumens	% Lamps
0 - 30	1023	17.9
0 - 40	1720	30.1
0 - 60	3299	57.7
60 - 90	1834	32.1
0 - 90	5133	89.8
90 - 180	583	10.2
0 - 180	5716	100.0

## MOUNTING DETAILS

