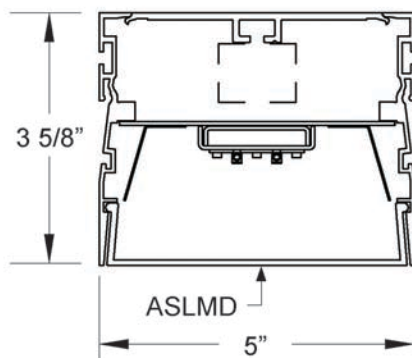




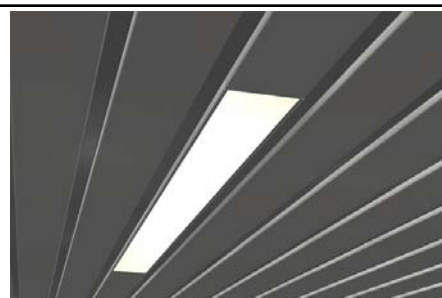
Click or scan QR code to view latest spec sheet

NEED FLUORESCENT?
CLICK HERE

Revision Date: January 12, 2018
Gammalux Lighting Systems reserves the right to change details of fixture designs and construction at any time.



LED Lamping



Click photo to view product page

Page 1: Overview & Nomenclature
Pages 2-3: Specifications
Pages 4-5: Photometric Info / Downloads
Page 6: Mounting Details
Page 8: Custom Programming

Product Overview (for complete specifications, see pages 2 & 3)

Upgrade Capability: LED components may be easily upgraded in the field to increase energy efficiency. Tool-less fastener allows quick LED retrofit while fixtures are still installed on site.

Construction: I.C. rated. Extruded aluminum housing provides superior fit and finish and is mounted in Hunter Douglas Box 6 or Deep Box 6 ceiling. Fixture end cap includes field-removable flange for interface with cut panel inline with fixture. Continuous runs have hairline joints. Runs of fixtures can be built to match field conditions.

Continuous Illumination: LED arrays can be oriented to provide consistent illumination in custom-length runs. 90 + CRI available.

Electrical: LED components by major manufacturers. Fixtures can be fitted with integral sensors, control interface devices and specialty LED components (consult factory). Standard Output, High Output and Custom Output options available.

Optical: Flush lenses available in medium or heavy diffusion.

Standard Nomenclature

Manufacturer	Output *	Driver Options	Paint Colors
Gammalux	S Standard Output H High Output C Custom-Programmed Output	DVR Static Driver For Dimming Options, See pg 2	COT10 Match to Hunter Douglas 10% reflective Cotton White COT20 Match to Hunter Douglas 20% reflective Cotton White NAT Gammalux match of Hunter Douglas Natural #7163
Cross Section (nom) 5" x 4"	Color Temp. (nom) 27 2700 K 50 5000 K 30 3000 K RGB 35 3500 K 40 4000 K	Mounting Method REC Recessed	Ceiling System BX6 Box 6 by Hunter Douglas DBX6 Deep Box 6 by Hunter Douglas
Housing Recessed Luminaire Model 2nd Generation			
GB54RC2BX6	1SL358	120V - DVR - 4' N - REC/XXXX	ASLMD - NAT
Housing Recessed in Box 6 Ceiling	CRI ** 8 for 80+ 9 for 90+	Run Length Specify total run length (i.e. 43' 5 1/8", etc). Single - piece housing max is 4' unless coordinated with factory.	Length Option N Nominal length S Specific length
Cross Section Shape Beam	Lamp Type LED	Voltage 120, 277, UNIV	Shielding *** ASLMD Acrylic Satin Lens (Medium Diffuse) ASLHD Acrylic Satin Lens (Heavy Diffuse)
LED Arrays in X-Sec 1 (for white only) 2 (for RGB only)			Options BPE Battery Pack EM. Kit DL UL Damp Label EMERG Emergency ckt.

* RGB must be High Output and controlled by DMX driver option

** 90+ CRI option increases wattage by nom. 8%. For RGB, do not select a CRI option.

*** Shielding options are ASLMD and ASLHD only.



248 East Arrow Highway, San Dimas, CA 91773 Tel 909.599.9669 | 800.356.3275

Fax 909.599.5288 E-mail: info@gammalux.com

Gammalux products comply with ARRA Buy American requirements

Specifications (continued on next page)

Electrical

Output: Standard (**S**) and high (**H**) options deliver a pre-set lumen package through the fixture shieldding (see chart below). Custom-programmed output (**C**) is specified as 50-99% of the high output lumen or watts-per-foot value (restrictions apply).

Static Driver: Osram [Optotronic](#)* programmable driver, wired for static operation (**DVR**).

0-10V Dimming: Osram [Optotronic](#)* programmable driver, wired for 0-10v control and dimming to 10% (**ZTV10**) or to 1% (**ZTV1**).

Step Dimming: Generic step dimming driver, two hot inputs for 100% and 50% output (**SD2**).

DMX Dimming: Generic DMX driver with three loose control wires exiting fixture at power feed location (**DMX**).

DALI Dimming: Generic DALI driver with two loose control wires exiting fixture at power feed location (**DALI**).

Lutron Dimming: [Hi-Lume 1%](#) via EcoSystem control (**L3DAE**). [Hi-Lume 1%](#) via 3-wire control (**L3DA3W**). [Hi-Lume 1%](#) EcoSystem with Soft-On, Fade-to-Black (**LDE1**). [5-Series](#) dim to 5% EcoSystem (**LDE5**).

White Emitter*: Nichia 757G emitters binned within 3 MacAdam ellipses in Osram PrevaLED Linear or Gammalux proprietary array. 90+ CRI option (CRI code **9**) results in nom. 8% drop in efficacy; increase calculated wattage by 8%

RGB: Uses two rows of Osram [72618](#)*. RGB with all channels at full output consumes approximately 11 watts per foot.

- Red channel at full output will provide approximately the same # of lumens compared to our 3,500K white at High Output.

- Green channel at full output will provide approximately 171% of lumens compared to our 3,500K white at High Output.

- Blue channel at full output will provide approximately 35% of lumens compared to our 3,500K white at High Output.

Battery Pack: Integral Bodine [BSL310LP](#)* (**BPE**). 4W max input. 10W initial output.

LED System: 70% lumen output (L70) at max 85 degrees C calculated at >60k hours. Fixtures are shipped with anti-static gloves to minimize the risk of damage to LEDs during installation. [5 year limited warranty](#).

Upgrade Capability: LED assemblies can be replaced in the future with the latest factory-provided and fully warranted components.

On-board sensors, On-board sensors and control interface devices and alternate LED components may be specified (consult factory).

Max driver cross section 1.0" x 1.2". Fixtures bear UL & cUL Dry Location label. Damp Location label available (**DL**).

*Subject to availability; may be substituted by Gammalux. Components and specifications may be changed without notice.

ESTIMATED LUMENS PER FOOT DELIVERED BY COMBINATION OF 80+ CRI LEDs AND LENS OPTION											
STANDARD OUTPUT 6.35 WPF (nom)						HIGH OUTPUT 8.83 WPF (nom)					
OPTIONS	2700 K	3000 K	3500 K*	4000 K	5000 K	OPTIONS	2700 K	3000 K	3500 K*	4000 K	5000 K
ASLMD	599.9	639	652.1	678.2	691.2	ASLMD	799.5	851.6	869.0	903.8	921.1
ASLHD	438.9	467.6	477.1	496.2	505.7	ASLHD	584.8	622.9	635.7	661.1	673.8
Consult factory for options on custom output or wattage consumption. *IES files were created using 3500K boards. Values were then adjusted by a factor of .92 for 2700K, .98 for 3000K, 1.04 for 4000K and 1.06 for 5000K boards.											

Construction

Housing: I.C. rated. Extruded aluminum body 5.00" wide x 3.625" high, 6063T5, 0.070" min thickness. In continuous runs, each housing is 12' max unless longer housings are pre-coordinated with the factory to reduce joints and save installation labor. All fixtures are built per approved factory drawings and tested as a complete system at the factory. Continuous runs and patterns are ordered, built and shipped with a single item #. Fixtures ordered as individuals cannot be joined together in the field.

Joiner System: Automatic alignment, no loose parts, one tool to tighten two factory installed bolts for hairline seam. No light leaks.

Lamping: Runs ordered in Specific Length (Length Option **S**) require special lamping components to create consistent illumination and may have a higher than normal price per foot. Runs ordered in Nominal Length (Option **N**) may be length-adjusted at the factory to use standard lamping components. Factory drawings will show all dimensions for approval prior to production. Fixtures built to less than 4' may not achieve posted lumens per foot - consult factory.

Mounting: Recessed into a Box 6 (**REC/BX6**) or Deep Box 6 (**REC/DBX6**) ceiling system by Hunter Douglas. Fixture end cap includes field-removable flange for interface with cut panel inline with fixture.

Specifications (continued)

Optical

Reflectors: Shall be formed diffuse high reflectance aluminum.

Acrylic Satin Lens, Medium Diffuse: Snap-in. Shall be 100% DR acrylic (**ASLMD**).

Acrylic Satin Lens, Heavy Diffuse: Snap-in. Shall be 100% DR acrylic (**ASLHD**).

See lens images on photometric pages.

Finish

Housing is electrostatically sprayed with high solids aliphatic two component polyurethane to an average thickness of 2 mils. over acid etching primer or commercial clear anodizing. High quality paint finish, matched to Hunter Douglas panels.

Packing and Shipping

Fixtures built for continuous rows are given a specific location identifier, clearly identified on factory layout drawings provided to installing contractor. Location identifier is printed on the fixture's ID Label, protective wrapping and on each end of fixture carton. Shipping pallets are built with 2" clearance, extending beyond the length and width of cartons, providing shipping protection.

Approx. weight of 4' module is 19 lbs. including carton. Weight of pallet and supplemental packing materials not factored in.

**Photometric Reports for
STANDARD OUTPUT FIXTURES**

FIXTURE USES LENS ASLMD (MEDIUM DIFFUSE) AND 3500 K BOARDS. @ 80+CRI

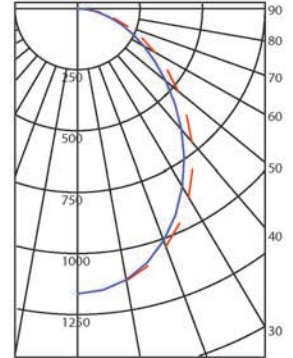
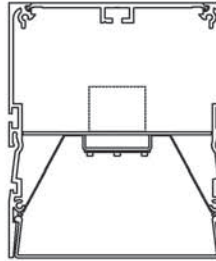
IESNA: LM 79-2008
ISSUEDATE: 03/20/2013
TEST: L02136201R02 MOD TO 73571
TESTLAB: ITL, INC.
MANUFAC: GAMMALUX LIGHTING SYSTEMS
LUMCAT: GB56RC2-1SOLED35-ASLMD
LAMPS: 73571 PLPG2-Bar-1100-835-289x38-DC

EFFICACY (Total): 102.7 LPW
DISTRIBUTION % UP: 0%
DISTRIBUTION % DOWN: 100%
CIE CLASSIFICATION: DIRECT

LUMINOUS OPENING: RECTANGULAR
Width: 0.40 (Feet)
Length: 3.92
Height: 0.00
INPUT WATTS: 25.4



Acrylic Satin Lens,
Medium Diffuse
(ASLMD)



Quadrilaterally Symmetric
Dashed: 0 Degrees Solid: 90 Degrees



FIXTURE USES LENS ASLHD (HEAVY DIFFUSE) AND 3500 K BOARDS. @ 80+CRI

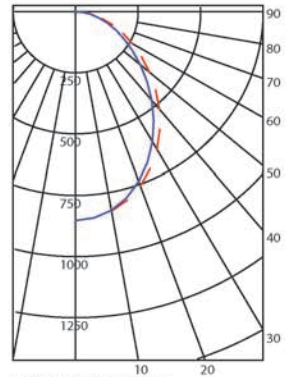
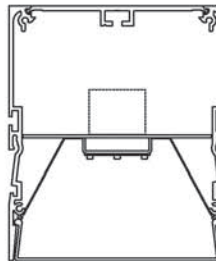
IESNA: LM 79-2008
ISSUEDATE: 03/20/2013
TEST: L02136201R02 MOD TO 73571
TESTLAB: ITL, INC.
MANUFAC: GAMMALUX LIGHTING SYSTEMS
LUMCAT: GB56RC2-1SOLED35-ASLHD
LAMPS: 73571 PLPG2-Bar-1100-835-289x38-DC

EFFICACY (Total): 75.1 LPW
DISTRIBUTION % UP: 0%
DISTRIBUTION % DOWN: 100%
CIE CLASSIFICATION: DIRECT

LUMINOUS OPENING: RECTANGULAR
Width: 0.40 (Feet)
Length: 3.92
Height: 0.00
INPUT WATTS: 25.4



Acrylic Satin Lens,
Heavy Diffuse
(ASLHD)



Quadrilaterally Symmetric
Dashed: 0 Degrees Solid: 90 Degrees



**Photometric Reports for
HIGH OUTPUT FIXTURES**

FIXTURE USES LENS ASLMD (MEDIUM DIFFUSE) AND 3500 K BOARDS. @ 80+CRI

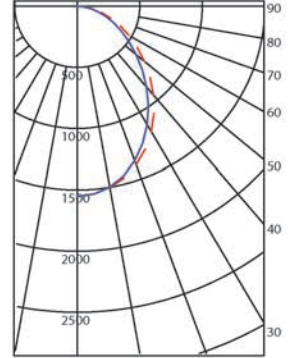
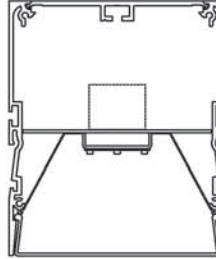
IESNA: LM 79-2008
ISSUEDATE: 03/20/2013
TEST: L02136201R02 MOD TO 73571
TESTLAB: ITL, INC
MANUFAC: GAMMALUX LIGHTING SYSTEMS
LUMCAT: GB56RC2-1HOLED35-ASLMD
LAMPS: 73571 PLPG2-Bar-1100-835-289x38-DC

EFFICACY (Total): 98.5 LPW
DISTRIBUTION % UP: 0%
DISTRIBUTION % DOWN: 100%
CIE CLASSIFICATION: DIRECT

LUMINOUS OPENING: RECTANGULAR
Width: 0.40 (Feet)
Length: 3.92
Height: 0.00
INPUT WATTS: 35.3



Acrylic Satin Lens,
Medium Diffuse
(ASLMD)



Quadrilaterally Symmetric
Dashed: 0 Degrees Solid: 90 Degrees



FIXTURE USES LENS ASLHD (HEAVY DIFFUSE) AND 3500 K BOARDS. @ 80+CRI

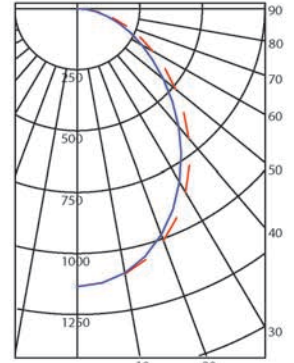
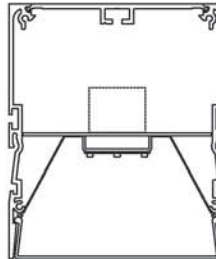
IESNA: LM 79-2008
ISSUEDATE: 03/20/2013
TEST: L02136201R02 MOD TO 73571
TESTLAB: ITL, INC
MANUFAC: GAMMALUX LIGHTING SYSTEMS
LUMCAT: GB56RC2-1HOLED35-ASLHD
LAMPS: 73571 PLPG2-Bar-1100-835-289x38-DC

EFFICACY (Total): 72.0 LPW
DISTRIBUTION % UP: 0%
DISTRIBUTION % DOWN: 100%
CIE CLASSIFICATION: DIRECT

LUMINOUS OPENING: RECTANGULAR
Width: 0.40 (Feet)
Length: 3.92
Height: 0.00
INPUT WATTS: 35.3



Acrylic Satin Lens,
Heavy Diffuse
(ASLHD)



Quadrilaterally Symmetric
Dashed: 0 Degrees Solid: 90 Degrees

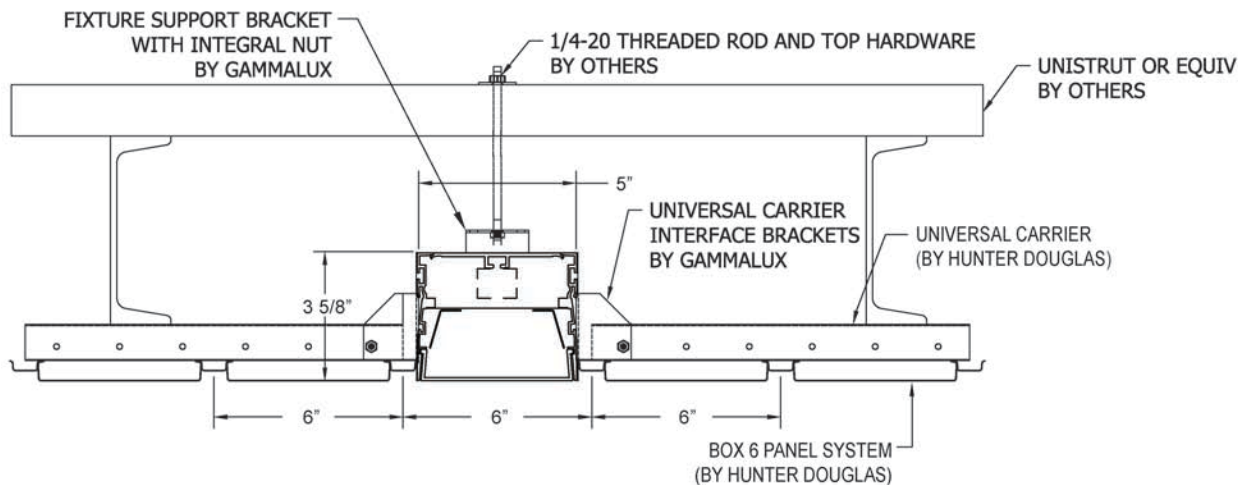


Mounting Details

Factory Drawings: Fully dimensioned factory drawings will be provided upon receipt of purchase order.

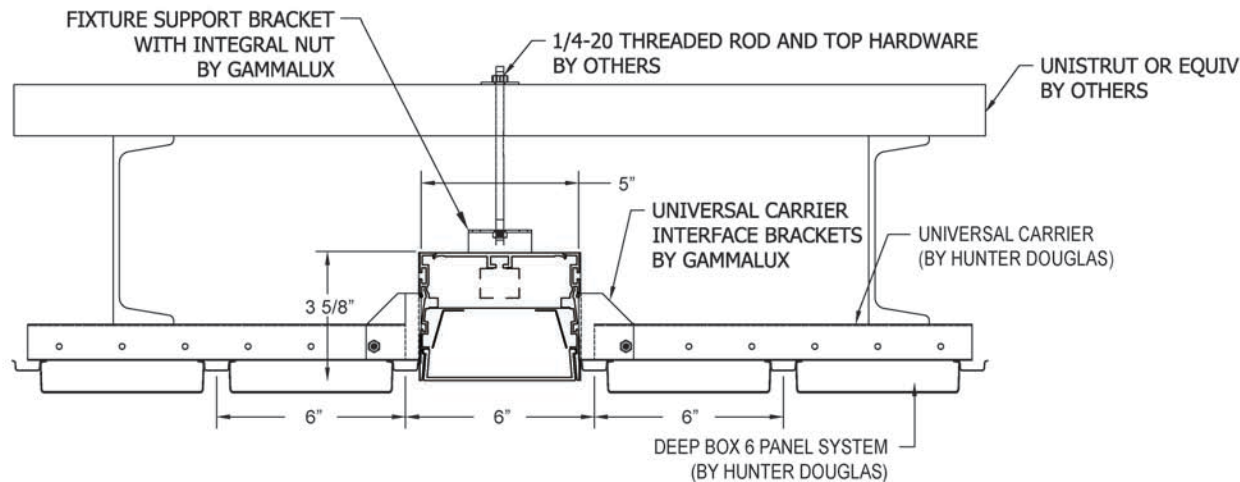
Box 6 Ceiling:

Specify **BX6** code in catalog #



Deep Box 6 Ceiling:

Specify **DBX6** code in catalog #



MOUNTING BRACKET IS FIELD ADJUSTABLE TO ACCOMMODATE BOX 6 OR DEEP BOX 6

Gammalux Lighting Systems reserves the right to change the details of fixture design and construction at any time.

Custom Programmed Output

Custom Programmed Output can be specified to produce approximate Delivered Lumens per Foot, Percentage of High Output Value or Maximum Watts per Foot.

Delivered Lumens Per Foot

Gammalux deals only in delivered lumens per foot. When working to match or exceed a competitor product's Lumens Per Foot package, be sure you are looking at their Delivered (through the lens) lumens per foot, not their System (bare board) lumens per foot.

In the Gammalux item #, use C as the Output designator and add a fixture description stating the required Lumens Per Foot value (ie: if you need 600 lumens per foot delivered by the fixture, the line note would read "Program = 600 LPF").

Percentage of High Output Value

If the required delivered lumens per foot are not known, run lighting calculations using our High Output IES file and identify the percentage of decrease required to produce the correct lighting in the space.

In the Gammalux item #, use C as the Output designator and add a fixture description stating the required percentage of decrease from our High Output value (ie: for 60% of our High Output value, the line note would read "Program = 60% of High Output").

Maximum Watts Per Foot

In the Gammalux item #, use C as the Output designator and add a fixture description stating the required Maximum Watts per Foot (ie: if you need the fixtures capped at a maximum of 7 watts per foot, the line note would read "Program = 7 WPF").

For all three methods, custom programming capability is currently 50-99% of our High Output value. For requirements outside of this range, consult factory.